

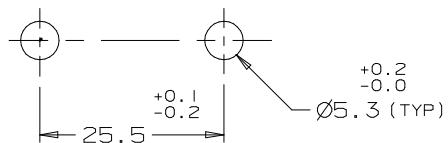
DATE	DRAWN	CHKD	SCALE	DRAWING NUMBER
29MAR94	JGK		1:1	J-AI-11-502-10-M

REV.	DATE	BY-CHKD	REVISIONS	ITEM	PART No.	MATERIAL	FINISH
				ASSEMBLY	AI-11-502-10		
				LATCH		NOTE A	NOTE A

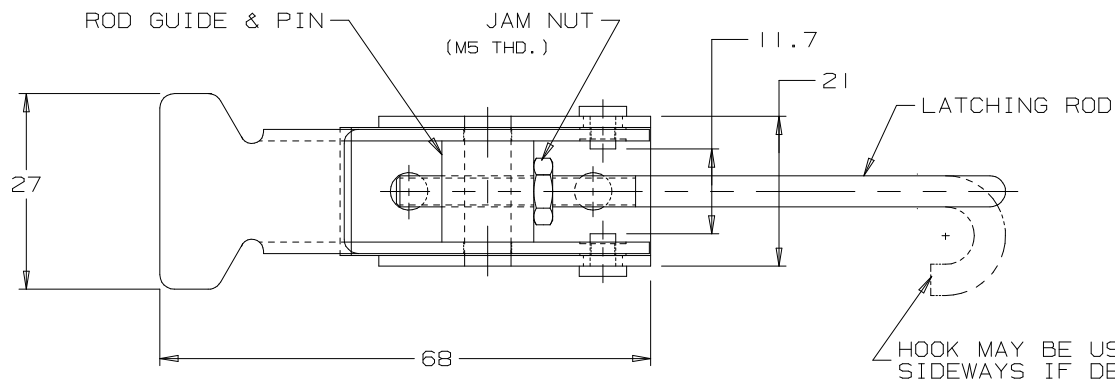
FOR A LATCH A WITH YELLOW VINYL GRIP ON THE HANDLE END, CHANGE THE EIGHTH DIGIT OF THE PART No. TO 2.  
EXAMPLE: AI-11-502-20

### TO ADJUST FOR LATCHING TENSION OR GASKET COMPRESSION

#### PANEL PREPARATION

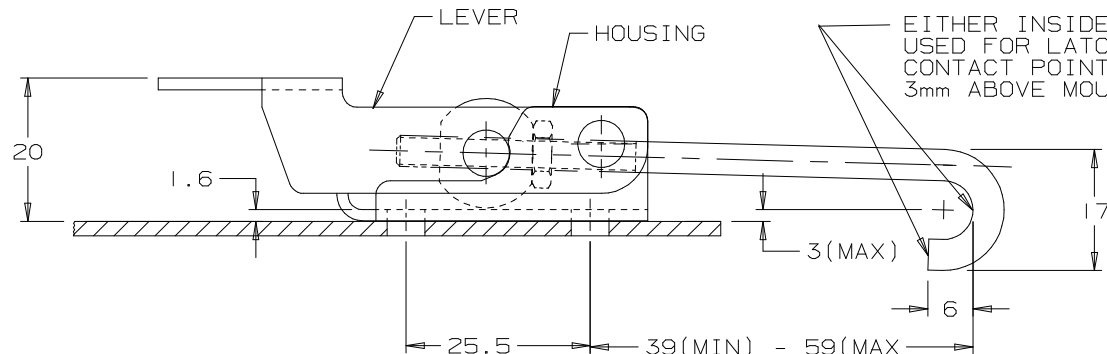


1. WITH LATCH IN CLOSED POSITION, ADJUST THREADED ROD USING A No.2 PHILLIPS SCREW DRIVER TO OBTAIN DESIRED LATCHING TENSION OR GASKET COMPRESSION.
2. OPERATE LATCH THROUGH UNLATCHING AND LATCHING SEQUENCE TO INSURE DESIRED ADJUSTMENT.
3. WITH FASTENER OPENED AND LEVER PERPENDICULAR TO ROD, TIGHTEN JAM NUT AGAINST ROD GUIDE, WHILE USING A PHILLIPS SCREWDRIVER TO PREVENT ROD FROM TURNING, TO LOCK ROD IN POSITION.



### TO MOUNT LATCH

1. LOCATE YOUR MOUNTING HOLES IN THE DESIRED LOCATIONS WITH RESPECT TO THE MOUNTING SURFACES.
2. MOUNT LATCH USING M5 SCREWS OR RIVETS.



### MATERIAL and FINISH

#### NOTE A:

LEVER AND HOUSING, 1010 STEEL. ROD GUIDE, PIN AND JAM NUT, LOW CARBON STEEL. ROD, 1006 STEEL. COMPONENTS ARE ZINC PLATED PLUS BRIGHT CHROMATE DIP. RIVET, 302 STAINLESS STEEL, PASSIVATED.