

6

5

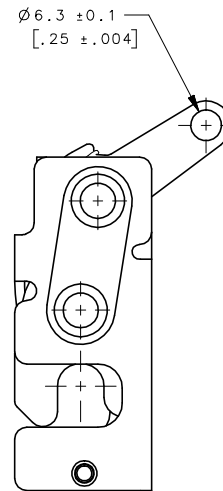
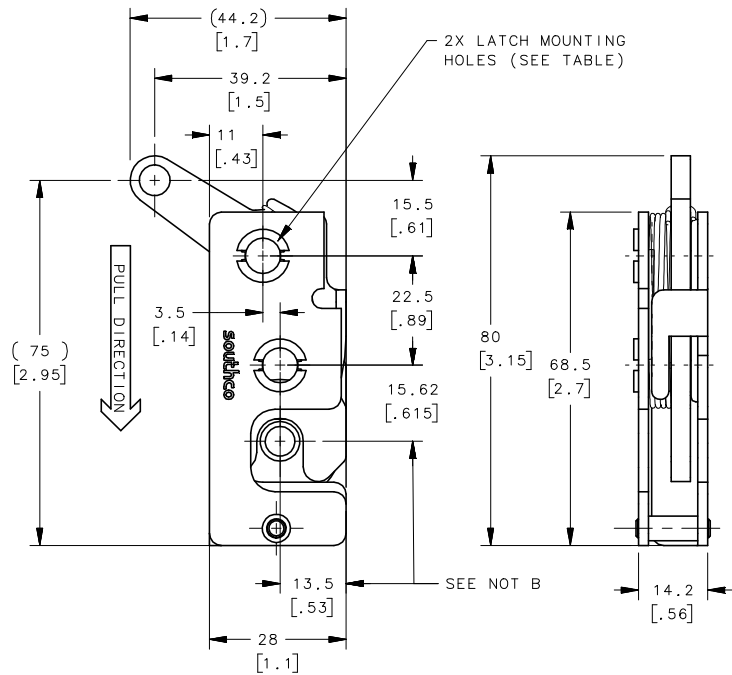
4

3

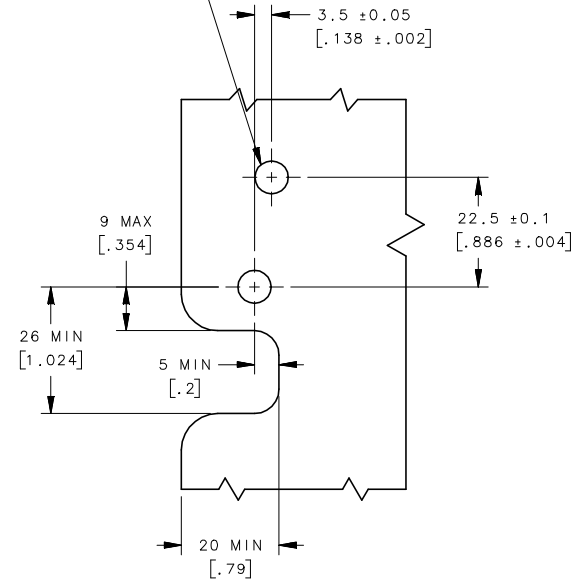
2

1

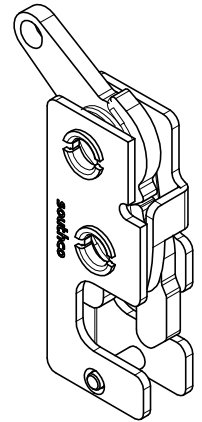
REVISION HISTORY			
REV	DATE	BY	DESCRIPTION
B	03FEB2014	ACH/ASM	PRN: P2014-0306



2X MINIMUM RECOMMENDED
PANEL HOLES (SEE TABLE)



PANEL PREPARATION



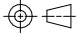
ASSEMBLY R4-10-40-501-10 SHOWN

NOTES:

A. MATERIAL AND FINISH:

- HOUSING, LEVER AND INTERNAL COMPONENTS:
MATERIAL - STEEL
-10 ZINC PLATED, BRIGHT CHROMATE
-77 ZINC NICKEL, BRIGHT CHROMATE
- PAWL AND TRIGGER:
MATERIAL - HARDENED STEEL
-10 ZINC PLATED, BRIGHT CHROMATE
-77 ZINC NICKEL, BRIGHT CHROMATE
ZINC PLATE CHROMATE.
- SPRING: STAINLESS STEEL, PASSIVATED

B. THESE DIMENSIONS REQUIRED FOR MOUNTING STRIKER BOLT.

R4-10-40-501-77	$\phi 7.2$ mm THRU	SEE NOTE A	SEE NOTE A		
R4-10-41-501-77	1/4-20 THREAD	SEE NOTE A	SEE NOTE A		
R4-10-42-501-77	M6 THREAD	SEE NOTE A	SEE NOTE A		
R4-10-40-501-10	$\phi 7.2$ mm THRU	SEE NOTE A	SEE NOTE A		
R4-10-41-501-10	1/4-20 THREAD	SEE NOTE A	SEE NOTE A		
R4-10-42-501-10	M6 THREAD	SEE NOTE A	SEE NOTE A		
ASSEMBLY PART NUMBER	LATCH MOUNTING HOLE	MATERIAL	FINISH	GENERAL NOTES	
	THIRD ANGLE PROJECTION				
	MILLIMETERS [IN]				
SURFACE AREA	TOLERANCES UNLESS OTHERWISE NOTED	southco® CONNECT • CREATE • INNOVATE			
VOLUME	ALL DIMENSIONS WITHOUT TOLERANCES ARE FOR REFERENCE ONLY.				
PROPRIETARY ITEM EXCEPT FOR USES EXPRESSLY GRANTED IN WRITING, INFORMATION DISCLOSED HEREIN IS CONFIDENTIAL AND ALL RIGHTS, PATENT AND OTHERWISE, ARE RESERVED BY SOUTHCO, INC.	PER ASME Y14.5M-1994	DESCRIPTION R4 MINI TWO STAGE ROTARY LATCH WITH TRIGGER HOLE - LEFT HAND	SIZE B	SYSTEM NX	DWG NO. J-R4-10-40-501
		DRAWN BY YSN/ACH	DATE 26APR2012	SCALE 1:1	SHEET 1 OF 3

6

5

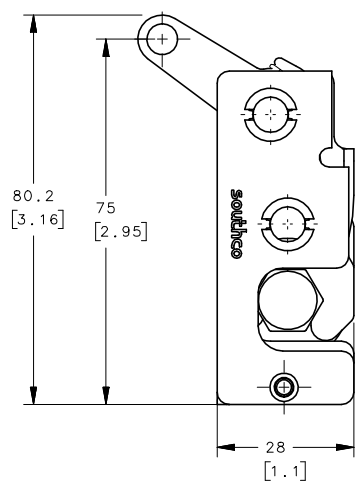
4

3

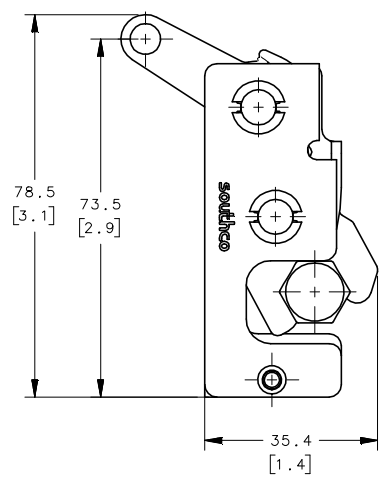
2

1

REVISION HISTORY			
REV	DATE	BY	DESCRIPTION
B	03FEB2014	ACH/ASM	PRN: P2014-0306

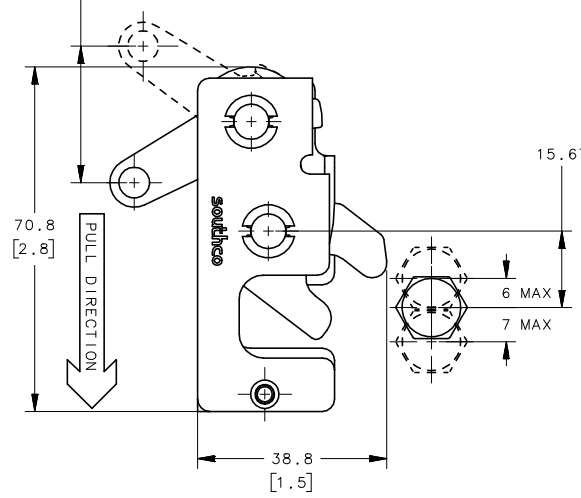


LATCHED STAGE

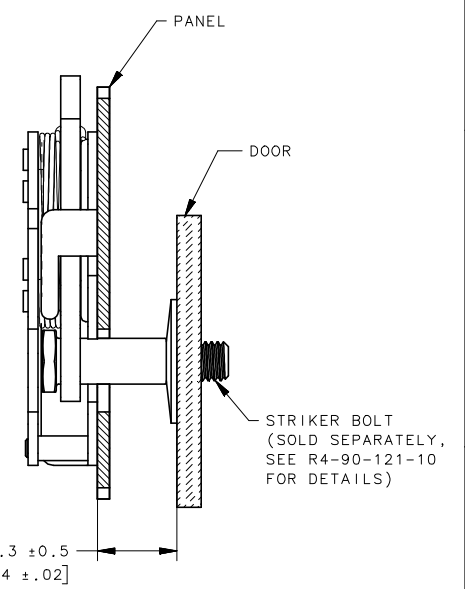


SECONDARY STAGE

AMOUNT OF TRIGGER TRAVEL
6.4 MIN
[.25]
27 MAX
[1.06]



MISALIGNMENT VIEW
(SEE NOTE B)
PRIMARY STAGE



ASSEMBLY R4-10-40-501-10 SHOWN

NOTES:

- A. THE TOLERANCE BETWEEN THE LATCH AND STRIKER BOLT ASSUMES A NON-RIGID DOOR INSTALLATION THAT WILL ALLOW THE DOOR TO MOVE INTO THE NOMINAL POSITION DURING LATCHING. RIGID DOORS MUST HAVE THE STRIKER INSTALLED PER THE PANEL PREPARATION RECOMMENDATION.
- B. THE MISALIGNMENT VIEW ASSUMES THE LATCH IS CONNECTED TO A PERFECTLY RIGID DOOR AND HINGE; THEREFORE, THERE IS NO DOOR AND/OR HINGE SLACK ASSOCIATED WITH THESE DIMENSIONS. THE MISALIGNMENT VIEW DOES NOT TAKE FLEXING OF THE STRIKER BOLT INTO ACCOUNT.

R4-10-40-501-77	Ø 7.2mm THRU	Ø 7.6 [.299]	
R4-10-41-501-77	1/4-20 THREAD	Ø 6.8 [.268]	
R4-10-42-501-77	M6 THREAD	Ø 6.4 [.252]	
R4-10-40-501-10	Ø 7.2mm THRU	Ø 7.6 [.299]	
R4-10-41-501-10	1/4-20 THREAD	Ø 6.8 [.268]	
R4-10-42-501-10	M6 THREAD	Ø 6.4 [.252]	
ASSEMBLY PART NUMBER	LATCH MOUNTING HOLE	MINIMUM RECOMMENDED PANEL HOLE	GENERAL NOTES
	THIRD ANGLE PROJECTION	 CONNECT · CREATE · INNOVATE	
	MILLIMETERS [IN]		
SURFACE AREA	TOLERANCES UNLESS OTHERWISE NOTED	DESCRIPTION	
VOLUME	ALL DIMENSIONS WITHOUT TOLERANCES ARE FOR REFERENCE ONLY.	R4 MINI TWO STAGE ROTARY LATCH WITH TRIGGER HOLE - LEFT HAND	
PROPRIETARY ITEM EXCEPT FOR USES EXPRESSLY GRANTED IN WRITING, INFORMATION DISCLOSED HEREON IS CONFIDENTIAL AND ALL RIGHTS, PATENT AND OTHERWISE, ARE RESERVED BY SOUTHCO, INC.	PER ASME Y14.5M-1994	SIZE SYSTEM	DWG NO.
		B NX	J-R4-10-40-501
		DRAWN BY	DATE
		YSN/ACH	26APR2012
		SCALE	SHEET
		1:1	2 OF 3

6

5

4

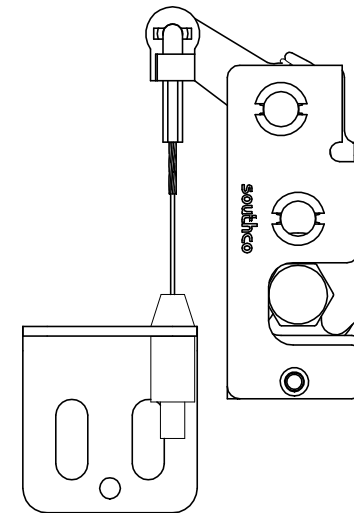
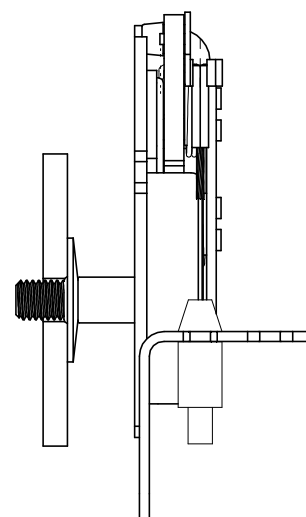
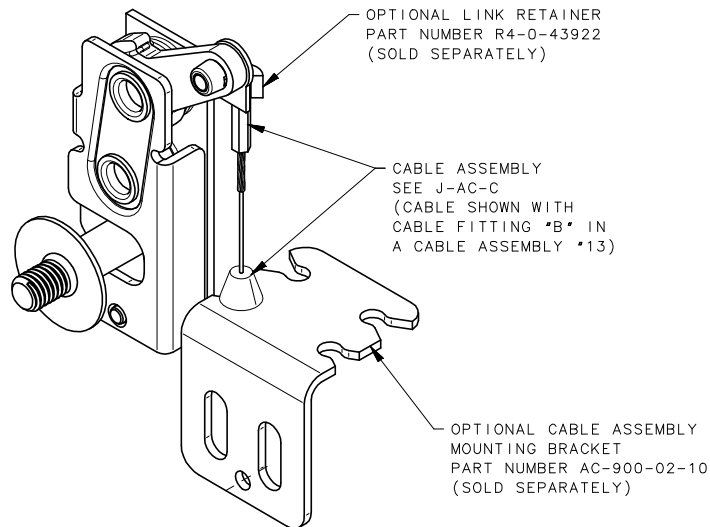


3

2

1

REVISION HISTORY			
REV	DATE	BY	DESCRIPTION
B	03FEB2014	ACH/ASM	PRN: P2014-0306



ASSEMBLY R4-10-40-501-10 SHOWN

R4-10-40-501-77	Ø 7.2mm THRU	Ø 7.6 [.299]	
R4-10-41-501-77	1/4-20 THREAD	Ø 6.8 [.268]	
R4-10-42-501-77	M6 THREAD	Ø 6.4 [.252]	
R4-10-40-501-10	Ø 7.2mm THRU	Ø 7.6 [.299]	
R4-10-41-501-10	1/4-20 THREAD	Ø 6.8 [.268]	
R4-10-42-501-10	M6 THREAD	Ø 6.4 [.252]	
ASSEMBLY PART NUMBER	LATCH MOUNTING HOLE	MINIMUM RECOMMENDED PANEL HOLE	GENERAL NOTES

	THIRD ANGLE PROJECTION		 CONNECT · CREATE · INNOVATE	
	MILLIMETERS [IN]			
SURFACE AREA	TOLERANCES UNLESS OTHERWISE NOTED		DESCRIPTION	
VOLUME	ALL DIMENSIONS WITHOUT TOLERANCES ARE FOR REFERENCE ONLY.		R4 MINI TWO STAGE ROTARY LATCH WITH TRIGGER HOLE - LEFT HAND	
PROPRIETARY ITEM EXCEPT FOR USES EXPRESSLY GRANTED IN WRITING, INFORMATION DISCLOSED HEREON IS CONFIDENTIAL AND ALL RIGHTS, PATENT AND OTHERWISE, ARE RESERVED BY SOUTHCO, INC.	PER ASME Y14.5M-1994	SIZE SYSTEM	DWG NO.	
		B NX	J-R4-10-40-501	
		DRAWN BY	DATE	SCALE SHEET
		YSN/ACH	26APR2012	1:1 3 OF 3

6

5

4



3

2

1