

ASSEMBLY PART NUMBERS AND DESCRIPTION

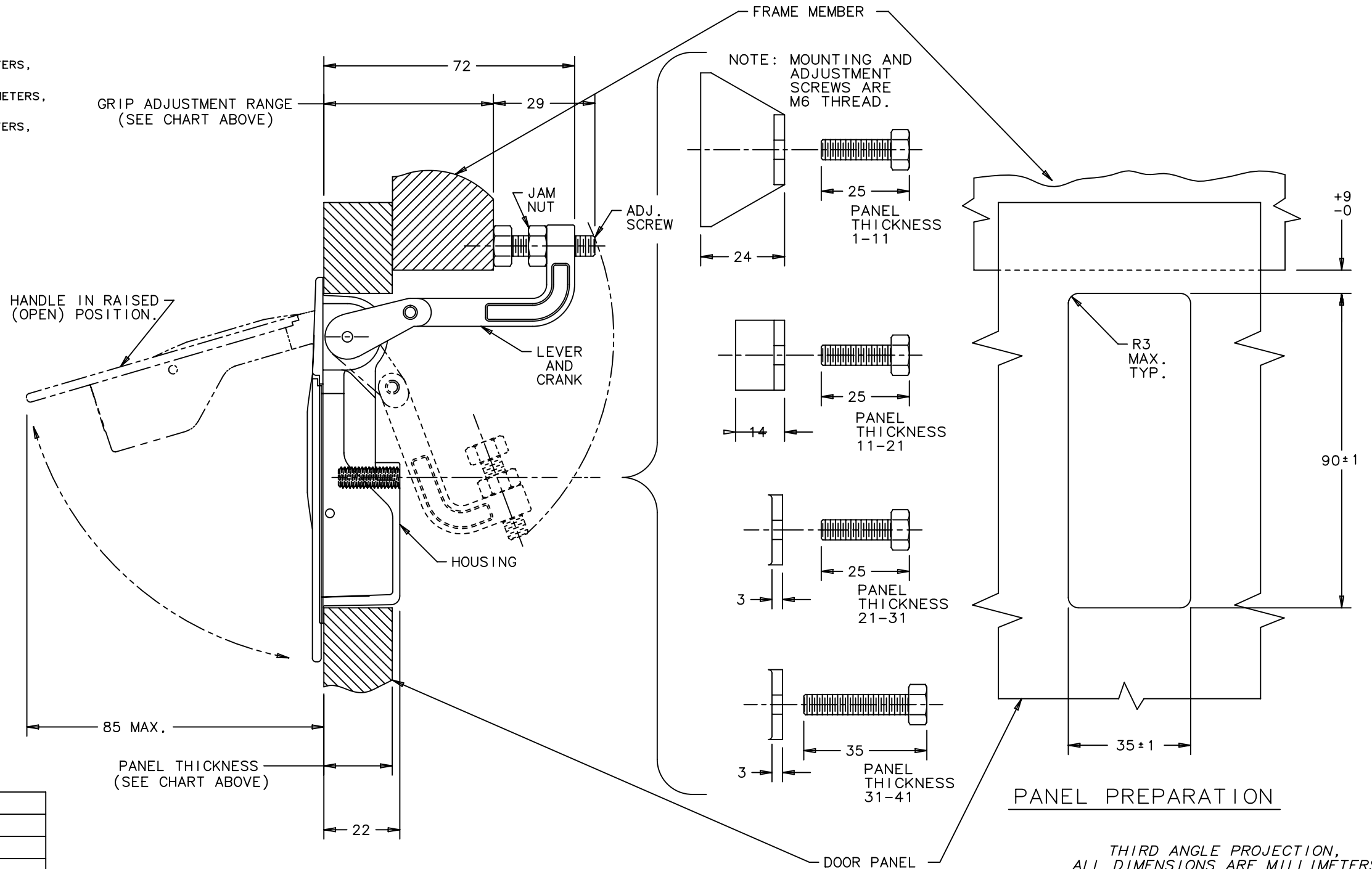
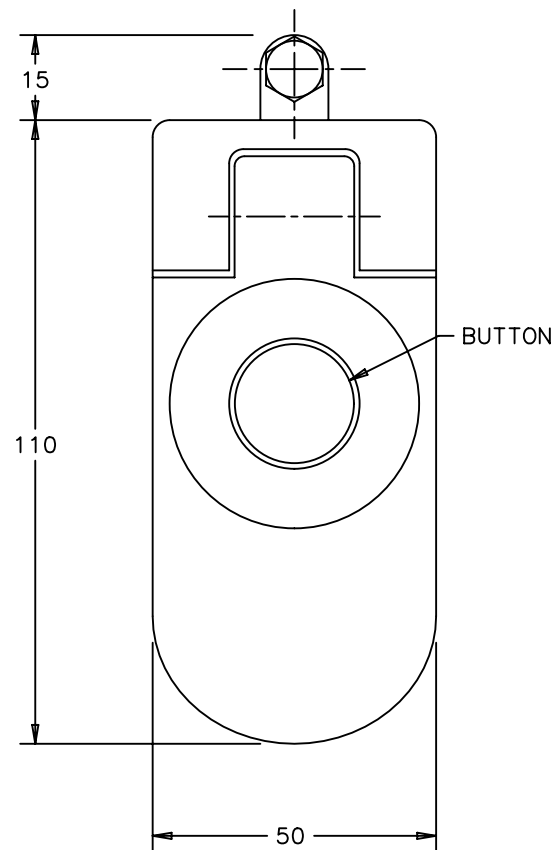
PANEL THICKNESS (mm)	EXTRA LONG* LEVER GRIP RANGE	BLACK ASSEMBLY WITH PLATED STEEL HARDWARE
1-11	45-57	C5-11-45
11-21		C5-12-45
21-31		C5-13-45
31-41		C5-14-45

\*SHORT LEVER GRIP RANGE AVAILABLE FROM 1 TO 14 MILLIMETERS, REFERENCE DRAWING NUMBER J-C5-1  
 MEDIUM LEVER GRIP RANGE AVAILABLE FROM 14 TO 29 MILLIMETERS, REFERENCE DRAWING NUMBER J-C5-2  
 LONG LEVER GRIP RANGE AVAILABLE FROM 29 TO 45 MILLIMETERS, REFERENCE DRAWING NUMBER J-C5-3

MATERIAL AND FINISH

LATCH ASSEMBLY CONSISTS OF:  
 HOUSING, HANDLE AND BUTTON:  
 DIE CAST ZINC, BLACK POWDER COAT WITH STEEL HARDWARE  
 LEVER AND CRANK: DIE CAST ZINC, COATED WITH CLEAR CHEMICAL PROTECTIVE FILM.  
 BLACK TORSION SPRING: 303 STAINLESS STEEL, PASSIVATED.  
 ROLL PINS: 420 STAINLESS STEEL, PASSIVATED.  
 O-RINGS: BUNA-N RUBBER, NATURAL.

HARDWARE CONSISTS OF:  
 MOUNTING BRACKET  
 MOUNTING SCREW  
 ADJUSTING SCREW  
 JAM NUT  
 1010 STEEL, ZINC PLATED WITH SEALED CHROMATE.



PANEL PREPARATION

THIRD ANGLE PROJECTION,  
 ALL DIMENSIONS ARE MILLIMETERS.

REV.	DATE	BY-CHKD	REVISIONS
D	03JAN2001	MDM	PRN: C5-91
E	08OCT2004	MJR MDY	PRN: P2004-1152
F	17MAY2022	CMS JDC	PRN: P2022-0882