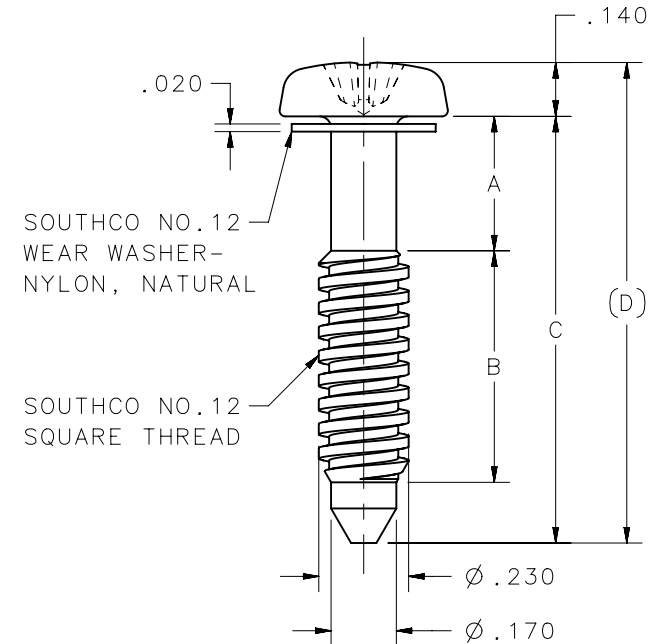
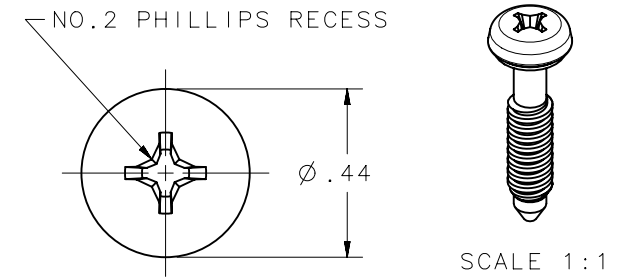


PART NUMBER	A	B	C	D
12-P-102	.100	.228	.486	.626
12-P-103	.150	.178		
12-P-202	.100	.353	.611	.751
12-P-203	.150	.303		
12-P-204	.200	.253		
12-P-205	.250	.203		
12-P-302	.100	.478		
12-P-303	.150	.428	.736	.876
12-P-304	.200	.378		
12-P-305	.250	.328		
12-P-307	.350	.228		
12-P-402	.100	.603		
12-P-403	.150	.553	.861	1.001
12-P-404	.200	.503		
12-P-405	.250	.453		
12-P-407	.350	.353		
12-P-409	.450	.253		
12-P-502	.100	.728	.986	1.126
12-P-503	.150	.678		
12-P-504	.200	.628		
12-P-505	.250	.578		
12-P-507	.350	.478		
12-P-509	.450	.378		
12-P-511	.550	.278		

PART NUMBER	A	B	C	D
12-P-602	.100	.853	1.111	1.251
12-P-603	.150	.803		
12-P-604	.200	.753		
12-P-605	.250	.703		
12-P-607	.350	.603		
12-P-609	.450	.503		
12-P-611	.550	.403		
12-P-613	.650	.303		
12-P-615	.750	.203		
12-P-702	.100	.978		
12-P-703	.150	.928		
12-P-704	.200	.878		
12-P-705	.250	.828		
12-P-707	.350	.728		
12-P-709	.450	.628		
12-P-711	.550	.528		
12-P-713	.650	.428		
12-P-715	.750	.328		
12-P-717	.850	.228		
12-P-802	.100	1.103	1.361	1.501
12-P-803	.150	1.053		
12-P-804	.200	1.003		
12-P-805	.250	.953		
12-P-807	.350	.853		
12-P-809	.450	.753		
12-P-811	.550	.653		
12-P-813	.650	.553		
12-P-815	.750	.453		
12-P-817	.850	.353		
12-P-819	.950	.253		

REVISION HISTORY			
REV	DATE	BY	DESCRIPTION
F	04OCT2012	DMS/YGC	PRN: P2012-1354



12-P-XXX	SCREW	LOW CARBON STEEL	CASE HARDENED	ZINC PLATE CHROMATE PLUS SEALER
PART NUMBER	TYPE OF COMPONENT	MATERIAL	HEAT TREAT	FINISH
	THIRD ANGLE PROJECTION	 CONNECT • CREATE • INNOVATE		
	INCHES [MM]			
SURFACE AREA	TOLERANCES UNLESS OTHERWISE NOTED	DESCRIPTION NO.12 PHILLIPS RECESS SCREW ASSEMBLY		
VOLUME	ALL DIMENSIONS WITHOUT TOLERANCES ARE FOR REFERENCE ONLY.	SIZE A	SYSTEM NX	DWG NO. J-12-P-1
PROPRIETARY ITEM EXCEPT FOR USES EXPRESSLY GRANTED IN WRITING, INFORMATION DISCLOSED HEREON IS CONFIDENTIAL AND ALL RIGHTS, PATENT AND OTHERWISE, ARE RESERVED BY SOUTHCO, INC.	PER ASME Y14.5M-1994	DRAWN BY JSS/JHV	DATE 30AUG1989	SCALE 2:1
			SHEET 1 OF 1	