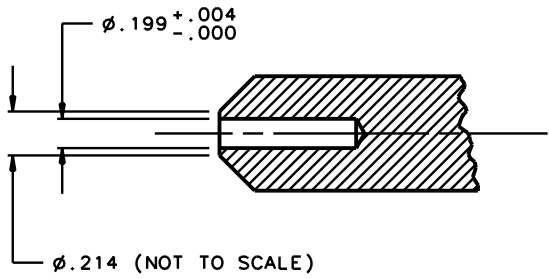


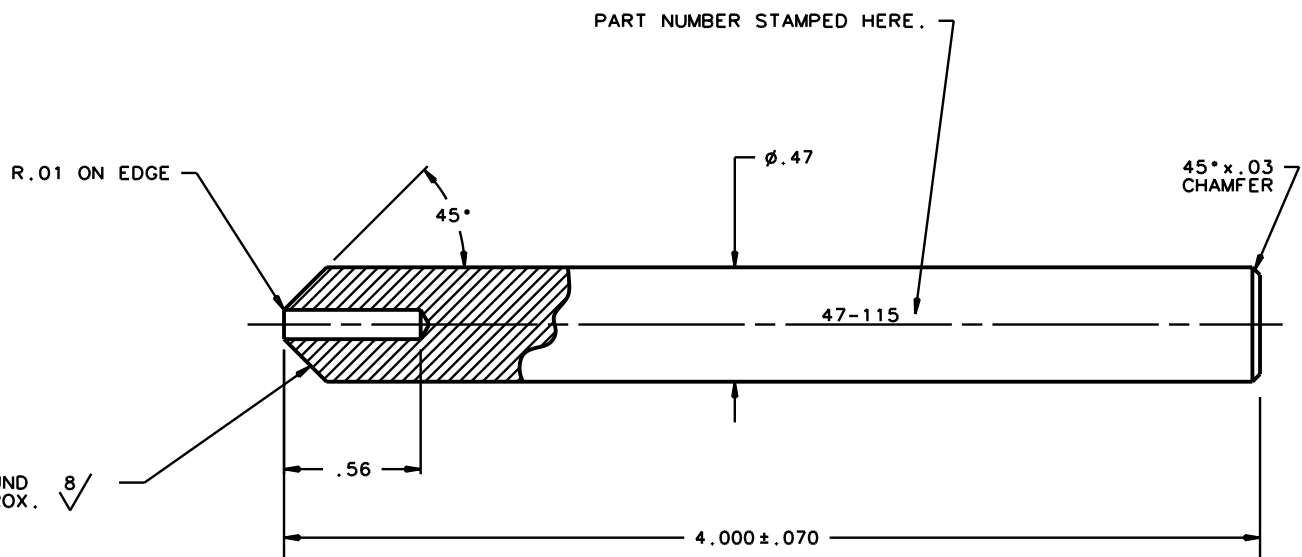
| DATE | DRAWN | CHKD | SCALE | DRAWING NUMBER |
|---------|-------|---------|-------|----------------|
| 05DEC94 | A. J | A. C. Z | 1 : 1 | J-47-115 |

| REV. | DATE | BY-CHKD | REVISIONS | PART NUMBER | MATERIAL | FINISH | HEAT TREAT | | |
|------|-----------|------------|-----------------|-------------|----------|------------|------------|--|--|
| A | 14MAY2002 | KHO DLH | PRN: P2002-0209 | 47-115 | AISI A-2 | SEE NOTE A | HRC 56-60 | | |
| | | | | | | | | | |
| | | | | | | | | | |
| | | | | | | | | | |
| | | | | | | | | | |



NOTES:

- A. ZINC PLATED AND BAKED PER ASTM B633 TY.111 SC.3 CHROMATE BRIGHT PRIOR TO FINISH GRINDING.
- B. A RUST PREVENTIVE IS APPLIED TO THE FINISHED GROUND SURFACE. A PROTECTIVE CAP IS PLACED ON THE FINISHED GROUND SURFACE.



THIS SURFACE IS GROUND AND POLISHED TO APPROX. $8/\sqrt{} \text{ FINISH}$

FORMAT 3/88

PROPRIETARY ITEM - EXCEPT FOR USES EXPRESSLY GRANTED IN WRITING INFORMATION DISCLOSED HEREON IS CONFIDENTIAL AND ALL RIGHTS PATENT AND OTHERWISE ARE RESERVED BY SOUTHCO, INC.

TOLERANCES UNLESS OTHERWISE NOTED.
 DECIMALS
 TWO PLACE (.XX) $\pm .010$ THREE PLACE (.XXX) $\pm .005$
 ANGLES
 DEG. $\pm 1^\circ$

| DRAWING NUMBER |
|----------------|
| J-47-115 |