


REV	DATE	DRAWN/CHKD	DESCRIPTION
H	24OCT2002	DLH/AJH	PRN: P2002-0829
I	03SEP2003	AAB/CHW	PRN: P2003-0769
J	30JAN2020	CMS/JW	PRN: P2020-0182

PART NUMBER	SCREW PROJECTION		PANEL THICKNESS		B	L
	P-1	P-2	A, MIN	A, MAX		
47-90-3X0-YZ	1.1	5.6	0.5	1	2	1.1
47-91-3X0-YZ	2.7	7.2				
47-92-3X0-YZ	4.3	8.8				
47-93-3X0-YZ	5.9	10.4				
47-90-3X2-YZ	2.7	7.2	1	1.6	2.6	1.7
47-91-3X2-YZ	4.3	8.8				
47-92-3X2-YZ	5.9	10.4				
47-90-3X4-YZ	2.7	7.2	1.6	2.5	3.5	2.6
47-91-3X4-YZ	4.3	8.8				
47-92-3X4-YZ	5.9	10.4				
47-90-3X6-YZ	4.3	8.8	2.5	3.2	4.2	3.3
47-91-3X6-YZ	5.9	10.4				
47-90-3X8-YZ	5.9	10.4	3.2	5	6	5.1

MILLIMETERS

ALL DIMENSIONS WITHOUT TOLERANCES ARE FOR REFERENCE ONLY.



THIRD ANGLE PROJECTION

A3 PAPER SIZE

MATERIAL AND FINISH:

NOB: 6000 SERIES ALUMINUM, NATURAL OR BLACK POWDER COATED

SCREW: 400 SERIES STAINLESS STEEL, PASSIVATED; OR HARDENED CARBON STEEL, ZINC PLATE, CHROMATE PLUS SEALER (SEE "Z" TABLE) (NOTE: KNOB AND TOP OF SCREW AVAILABLE WITH POWDER COATING; SEE "Y" TABLE)

FERRULE: 6000 SERIES ALUMINUM, NATURAL

SPRING: 300 SERIES STAINLESS STEEL, PASSIVATED

"X" SCREW RECESS

- 1 - SLOTTED
- 3 - No. 2 PHILLIPS
- 5 - T25 TORX
- 7 - T25 TORX/SLOT COMBINATION
- 9 - No. 2 PHILLIPS/SLOT COMBINATION

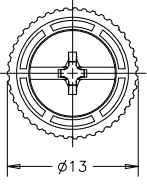
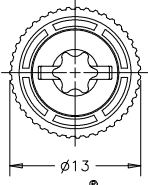
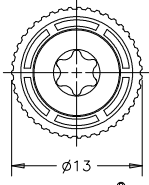
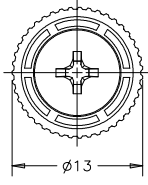
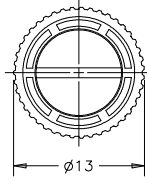
"Y" FINISH ON KNOB & SCREW HEAD

- 1 - BRIGHT
- 4 - CUSTOM COLOR. SEE J-47-0-3 FOR ADDITIONAL SUFFIX
- 5 - BLACK POWDER COATED

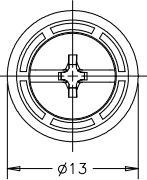
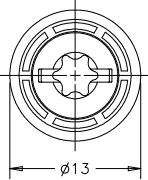
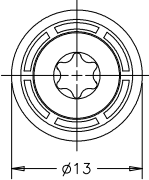
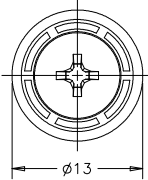
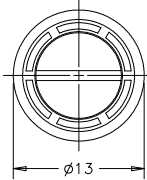
"Z" KNOB TYPE AND SCREW MATERIAL

KNOB	SCREW MATERIAL	RECESS	
		IF X = 1 OR 3	IF X = 5, 7 OR 9
KNURLED	STAINLESS STEEL	0	N/A
SMOOTH	STAINLESS STEEL	1	N/A
KNURLED	STEEL	4	0
SMOOTH	STEEL	5	1

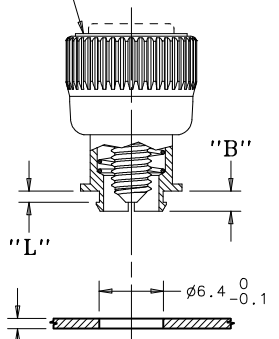
KNURLED KNOBS



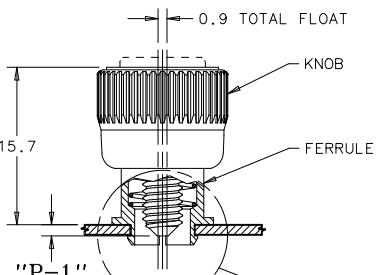
SMOOTH KNOBS



FLUSH RETRACTING SCREW ASSEMBLY SHOWN
P-1 = 1.1



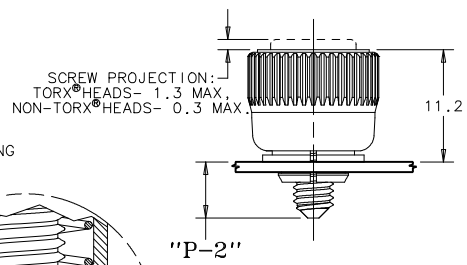
NOTE: KNOB AND SCREW ARE SPRING LOADED OUTWARD, AS SHOWN BELOW



UNFASTENED
PART NUMBER:
47-90-3X0-YO SHOWN

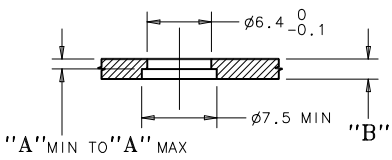
TO INSTALL FASTENER:

1. PREPARE PANEL AS SHOWN. NOTE: IF HOLES ARE DRILLED, TOP EDGE OF HOLE SHOULD BE CHAMFERED.
2. SCREW ASSEMBLY CAN BE INSTALLED WITH FINGER PRESSURE FROM PUNCH SIDE OF PANEL. NOTE: ASSEMBLY MUST BE KEPT PERPENDICULAR TO PANEL WHILE SNAPPING INTO HOLE.
3. FOR INSTALLATION FORCE GUIDELINES SEE DRAWING TD-47-10-J.



FASTENED
PART NUMBER:
47-90-3X0-YO SHOWN

PANEL PREPARATION I
REQUIRES SPACE BETWEEN INNER AND OUTER PANELS
PART NUMBER:
47-90-3X0-YO SHOWN



PANEL PREPARATION II
PROVIDES A FLUSH PANEL-TO-PANEL CONDITION WHEN FASTENED
PART NUMBER:
47-90-3X0-YO SHOWN