

ASSEMBLY PART NUMBER

E3 - RH - GF

R = ROTATION
H = HEAD STYLE
G = GRIP
F = FINISH

R = ROTATION

5 - TYPE A, CLOCKWISE TO LATCH
24 - TYPE B, COUNTER-CLOCKWISE TO LATCH

F = FINISH

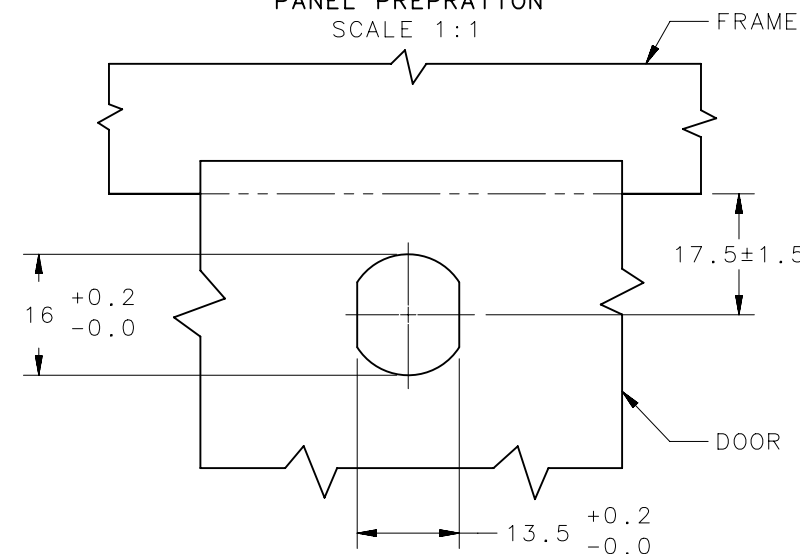
-2 = ELECTROPOLISHED
-12 = HANDBUFFED, ELECTROPOLISHED.

G = GRIP

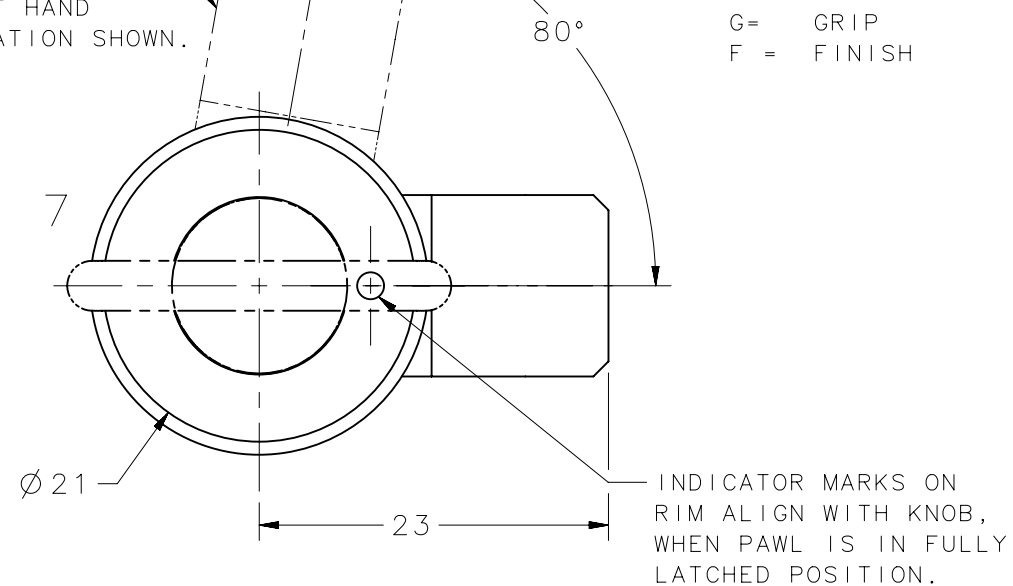
GRIP NO	MINIMUM NO CAM	MAXIMUM NO CAM OR HARDWARE
1	3.2	6.4
2	6.4	9.5
3	9.5	12.7
4	12.7	15.9
5	15.9	19.0
6	19.0	22.2
7	22.2	25.4
8	25.4	28.6

REVISION HISTORY			
REV	DATE	BY	DESCRIPTION
H	14APR2021	GJL/DMS	PRN: P2021-0686

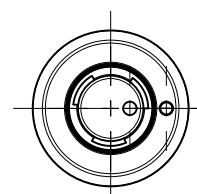
PANEL PREPARATION
SCALE 1:1



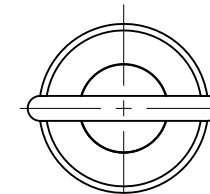
PAWL IN OPEN POSITION RIGHT HAND OPERATION SHOWN.



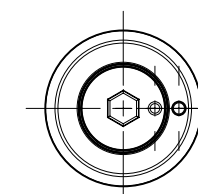
H = HEAD STYLE



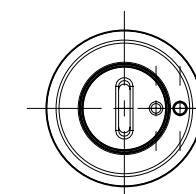
5 - SOUTHCO TUBULAR KEY (USE SOUTHCO KEY E3-26-819-15)



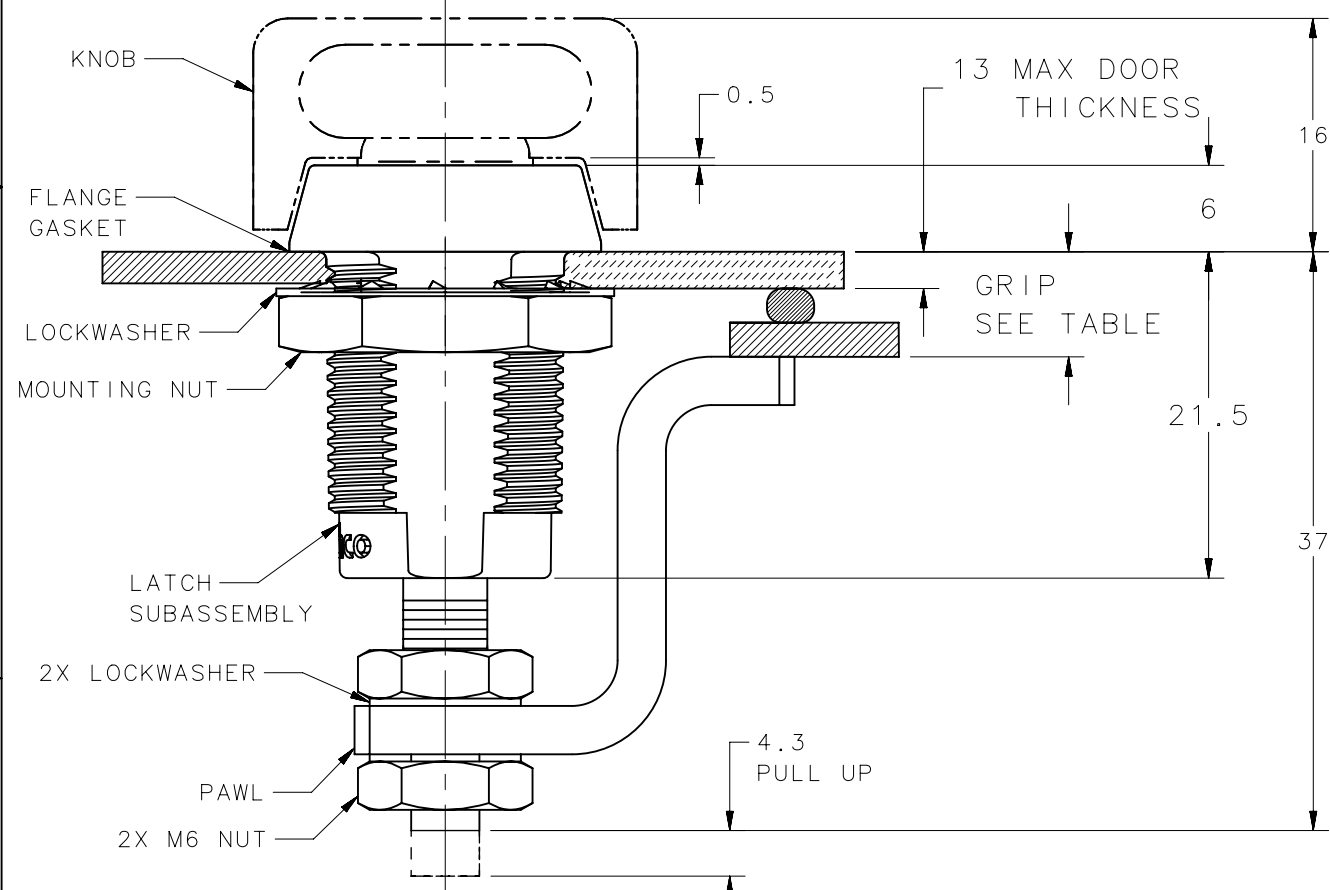
7 - KNOB



6 - 4 mm HEX RECESS



9 - 1.5 mm SLOTTED RECESS



NOTES:

- PAWL, NUTS AND LOCKWASHERS ARE SHIPPED UNASSEMBLED IN BAG WITH LATCH SUB-ASSEMBLY.
- INSTALLATION:
SECURE LATCH ASSEMBLY IN DOOR WITH LARGE LOCKWASHER AND MOUNTING NUT (19 ACROSS FLATS) AND TIGHTEN TO 13 N-m MAX. PLACE PAWL, NUTS AND (2X) LOCKWASHERS ON SHAFT AND ADJUST TO REQUIRED GRIP IN LATCHED POSITION. TIGHTEN NUTS 5 N-m MAX USING TWO 10mm WRENCHES.
- CAUTION: SET PAWL POSITION SO THAT NO MORE THAN 1.6 Nm OF TORQUE IS REQUIRED TO SECURE THE DOOR.
- OPERATION: 195° TURN OF DRIVER OR KNOB CAUSES PAWL TO ROTATE AND THEN PULL UP AS SHOWN.

NO.	PART NUMBER	QTY	TYPE OF COMPONENT	MATERIAL	FINISH
16	-	1	FLANGE GASKET	NEOPRENE	NATURAL
15	-	1	CAP (TUBULAR KEY)	303 STAINLESS STEEL	PASSIVATED
14	-	1	MOUNTING NUT	STAINLESS STEEL	PASSIVATED
13	-	1	LOCKWASHER	302 STAINLESS STEEL	PASSIVATED
12	-	2	PAWL LOCKWASHER	302 STAINLESS STEEL	PASSIVATED
11	-	2	M6 NUT	304 STAINLESS STEEL	PASSIVATED
10	-	1	PAWL	304 STAINLESS STEEL	PASSIVATED
9	-	1	PIN	STEEL-ZINC PLATE	CHROMATE PLUS SEALER, PASSIVATED
8	-	1	O-RING	BUNA N	-
7	-	1	RETAINER	302 STAINLESS STEEL	PASSIVATED
6	-	1	SLEEVE	1065 CASE HARDENED STEEL	DECROTIZED™
5	-	1	SPRING	302 STAINLESS STEEL	PASSIVATED
4	-	1	SHAFT	316 STAINLESS STEEL	-
3	-	1	CAP	316L STAINLESS STEEL	ELECTROPOLISHED
2	-	1	CAM	1075 CASE HARDENED STEEL	DECROTIZED™
1	-	1	HOUSING	316L STAINLESS STEEL	ELECTROPOLISHED
-	E3-5X-XZ	-	E3 VISE ACTION LATCH ASSEMBLY	-	-

THIRD ANGLE PROJECTION			
INCHES [MM]			
SURFACE AREA	TOLERANCES UNLESS OTHERWISE NOTED	DESCRIPTION	
VOLUME	ALL DIMENSIONS WITHOUT TOLERANCES ARE FOR REFERENCE ONLY.	E3 SMALL SIZE VISE ACTION™ LATCHES, STAINLESS STEEL	
PROPRIETARY ITEM EXCEPT FOR USES EXPRESSLY GRANTED IN WRITING, INFORMATION DISCLOSED HEREON IS CONFIDENTIAL AND ALL RIGHTS, PATENT AND OTHERWISE, ARE RESERVED BY SOUTHCO, INC.		SIZE B	SYSTEM NX
PER ASME Y14.5M-1994		DRAWN BY AAB/JSS	DATE 13JUL2004
		SCALE 2:1	SHEET 1 OF 1