

southco

PROPRIETARY ITEM - EXCEPT FOR USES EXPRESSLY PRINTED IN WRITING INFORMATION DISCLOSED HEREON IS CONFIDENTIAL AND ALL RIGHTS PATENT AND OTHER MAY BE RESERVED BY SOUTHCO, INC.

**SOUTHCO No. 47 CAPTIVE FASTENER
M5 THREAD, SNAP-IN STYLE**

DATE: 25AUG93
DRAWN: JGK
CHD: []
SCALE: 2:1

DRAWING NUMBER: J-47-5-M5

REV	DATE	DRAWN/CHKD	DESCRIPTION
H	13FEB2003	DLH/AJH	PRN: P2D02-0874
I	03SEP2003	AAB/CHW	PRN: P2D03-0780

PART NUMBER	SCREW PROJECTION		PANEL THICKNESS		B	L
	P-1	P-2	A. MIN	A. MAX		
47-90-5X0-YZ	1.1	5.6	0.5	1	2	1.1
47-91-5X0-YZ	2.7	7.2				
47-92-5X0-YZ	4.3	8.8	1	1.6	2.6	1.7
47-93-5X0-YZ	5.9	10.4				
47-90-5X2-YZ	2.7	7.2	1	1.6	2.6	1.7
47-91-5X2-YZ	4.3	8.8				
47-92-5X2-YZ	5.9	10.4	2.5	3.2	4.2	3.3
47-90-5X4-YZ	2.7	7.2				
47-91-5X4-YZ	4.3	8.8	1.8	2.5	3.5	2.8
47-92-5X4-YZ	5.9	10.4				
47-90-5X8-YZ	4.3	8.8	3.2	5	6	5.1
47-91-5X8-YZ	5.9	10.4				
47-90-5X8-YZ	5.9	10.4				

MILLIMETERS
ALL DIMENSIONS WITHOUT TOLERANCES ARE FOR REFERENCE ONLY.
THIRD ANGLE PROJECTION
A3 PAPER SIZE

MATERIAL AND FINISH:
KNOB: 6000 SERIES ALUMINUM, NATURAL DR BLACK POWDER COATED
SCREW: 400 SERIES STAINLESS STEEL, PASSIVATED; DR HARDENED CARBON STEEL, ZINC PLATE, CHROMATE PLUS SEALER (SEE "Z" TABLE) (NOTE: KNOB AND TOP OF SCREW AVAILABLE WITH POWDER COATING; SEE "Y" TABLE)
FERRULE: 6000 SERIES ALUMINUM, NATURAL
SPRING: 300 SERIES STAINLESS STEEL, PASSIVATED

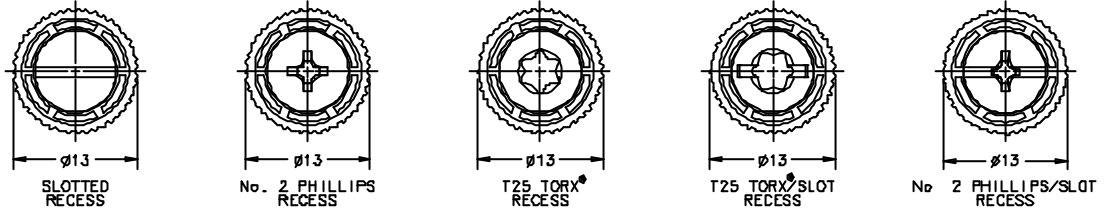
"Y" FINISH ON KNOB & SCREW HEAD
1 - BRIGHT
4 - CUSTOM COLOR SEE J-47-0-3 FOR ADDITIONAL SUFFIX
5 - BLACK POWDER COATED

"Z" KNOB TYPE AND SCREW MATERIAL

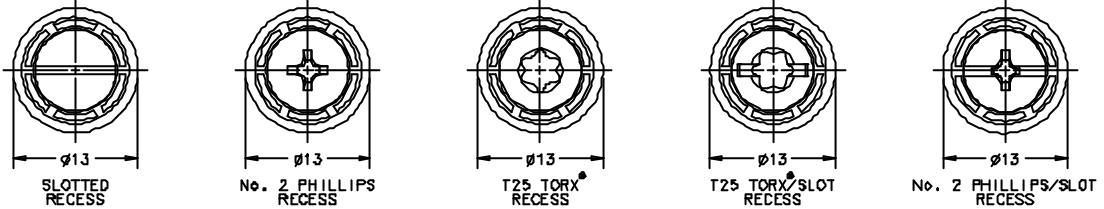
KNOB	SCREW MATERIAL	RECESS	
		SLOTTED PHILLIPS	TORX® TORX/SLOT PHILLIPS/SLOT
KNURLED	STAINLESS STEEL	0	N/A
SMOOTH	STAINLESS STEEL	1	N/A
KNURLED	STEEL	4	0
SMOOTH	STEEL	5	1

"X" SCREW RECESS
1 - SLOTTED
3 - No. 2 PHILLIPS
5 - T25 TORX®
7 - T25 TORX/SLOT COMBINATION
8 - No. 2 PHILLIPS/SLOT COMBINATION

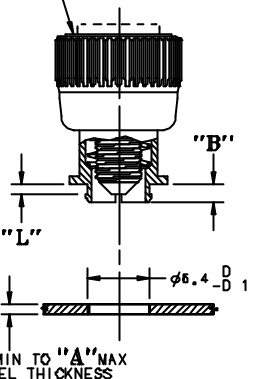
KNURLED KNOBS



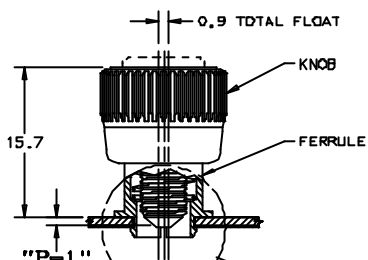
SMOOTH KNOBS



FLUSH RETRACTING SCREW ASSEMBLY SHOWN
P-1 = 1.1



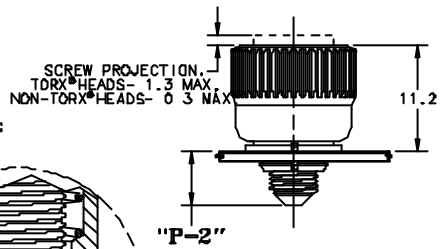
NOTE: KNOB AND SCREW ARE SPRING LOADED OUTWARD, AS SHOWN BELOW



UNFASTENED
PART NUMBER: 47-90-5X0-YO SHOWN

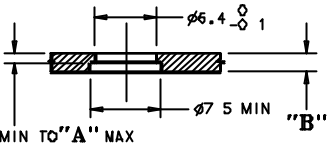
TO INSTALL FASTENER

1. PREPARE PANEL AS SHOWN NOTE IF HOLES ARE DRILLED, TOP EDGE OF HOLE SHOULD BE CHAMFERED.
2. SCREW ASSEMBLY CAN BE INSTALLED WITH FINGER PRESSURE FROM PUNCH SIDE OF PANEL. NOTE: ASSEMBLY MUST BE KEPT PERPENDICULAR TO PANEL WHILE SNAPPING INTO HOLE.
3. FOR INSTALLATION FORCE GUIDELINES SEE DRAWING TD-47-10-J.



FASTENED
PART NUMBER: 47-90-5X0-YO SHOWN

PANEL PREPARATION I
REQUIRES SPACE BETWEEN INNER AND OUTER PANELS
PART NUMBER: 47-90-5X0-YO SHOWN



PANEL PREPARATION II
PROVIDES A FLUSH PANEL TO PANEL CONDITION WHEN FASTENED
PART NUMBER: 47-90-5X0-YO SHOWN

SCALE: 4:1 TORX® IS A REGISTERED TRADEMARK OF THE CANCAR DIVISION OF TEXTRON, INC.

DRAWING NUMBER: J-47-5-M5