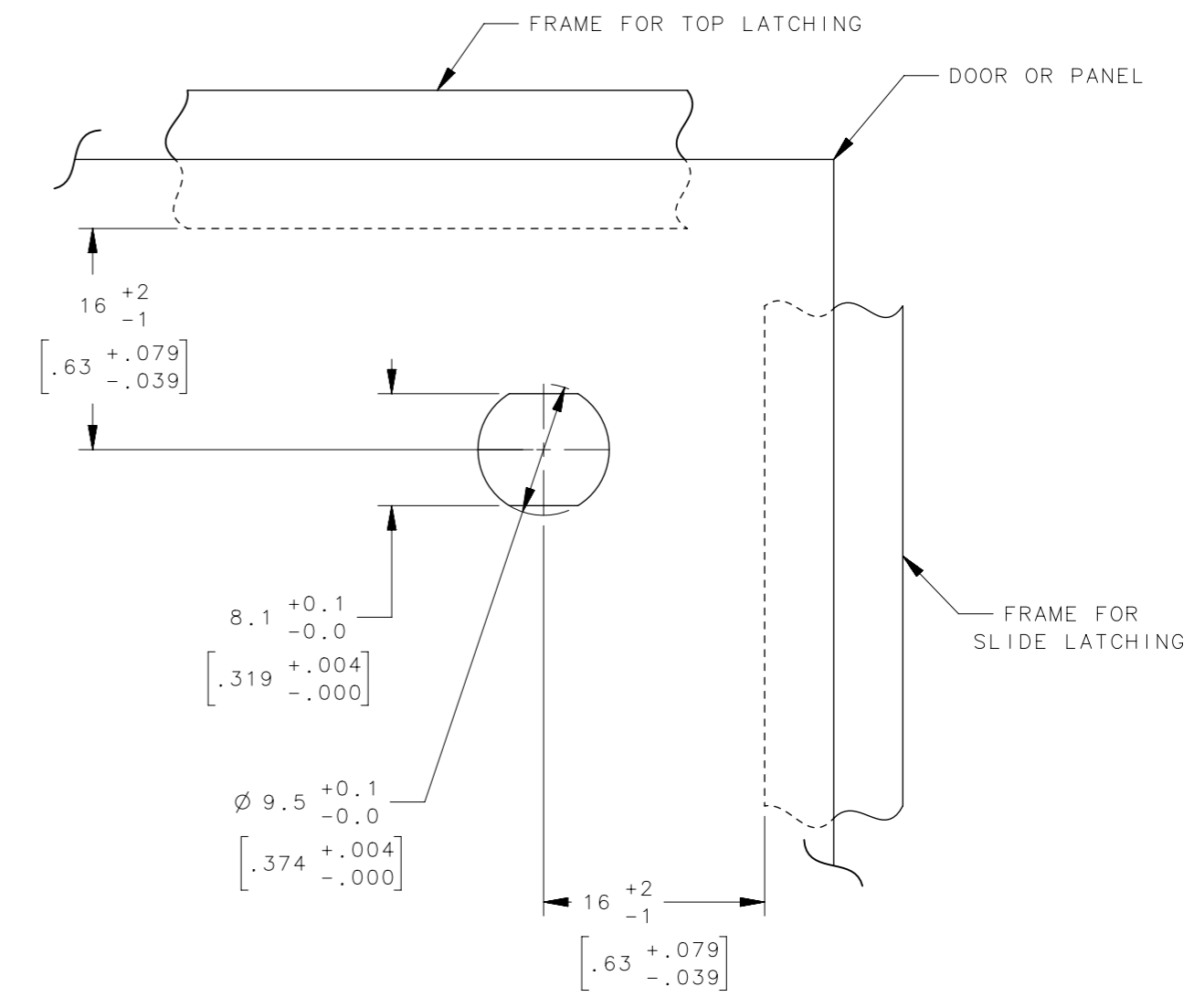
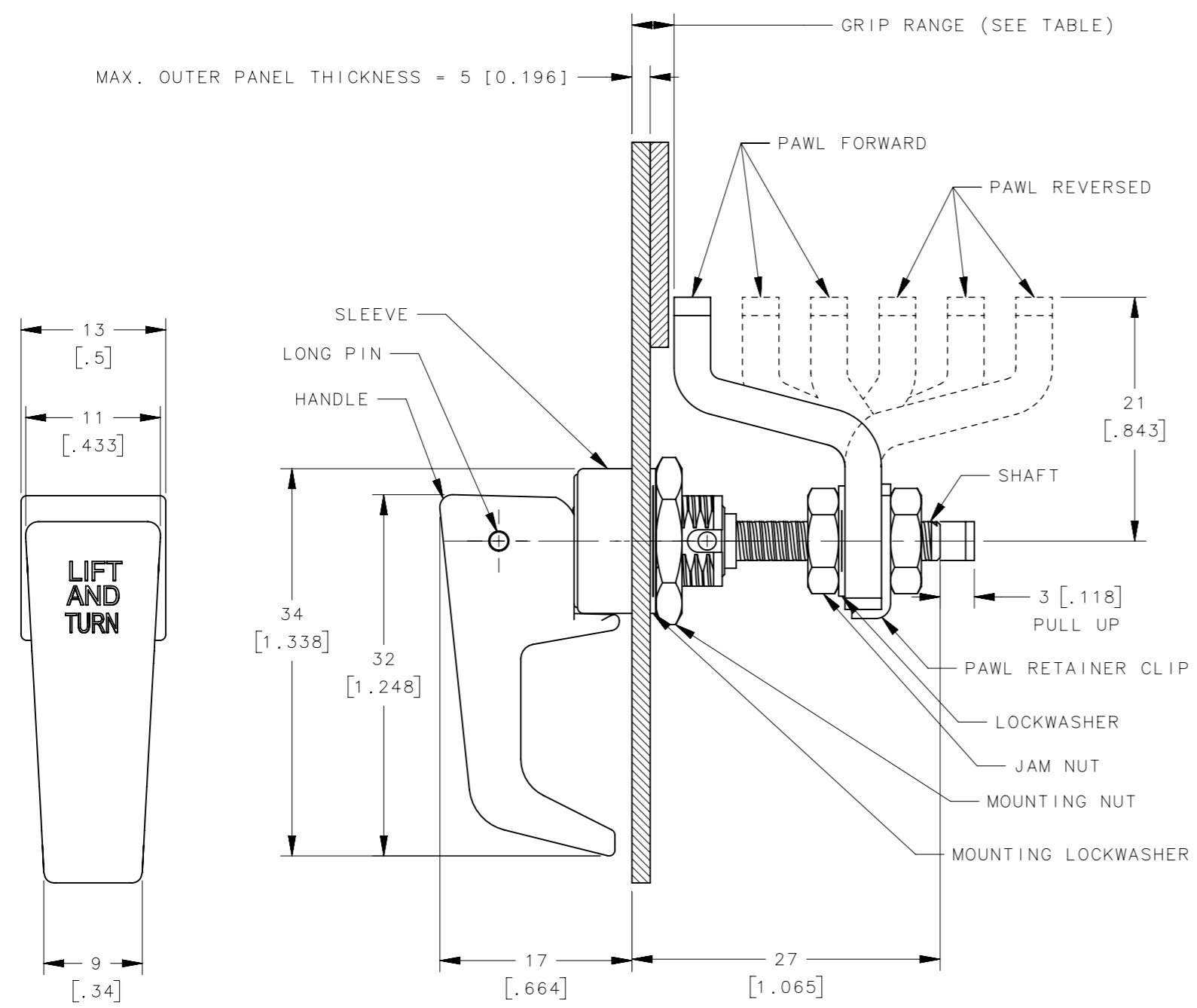


REVISION HISTORY			
REV	DATE	BY	DESCRIPTION
H	08MAR2021	KSH/VK	PRN: P2021-0424



**PANEL PREPARATION**

GRIP		ASSEMBLY PART NUMBER TABLE			
MIN	MAX	POLISHED CHROME	NATURAL WITH CHEMICAL PROTECTIVE FILM	BLACK POWDER COATED	SATIN SILVER POLYESTER POWDER COATED
0	4	62-20-11	62-20-13	62-20-15	62-20-17
4	10	62-20-21	62-20-23	62-20-25	62-20-27
10	16	62-20-31	62-20-33	62-20-35	62-20-37
16	22	62-20-31	62-20-33	62-20-35	62-20-37
22	28	62-20-21	62-20-23	62-20-25	62-20-27
28	34	62-20-11	62-20-13	62-20-15	62-20-17

- NOTES:
1. THREAD SIZE OF SLEEVE IS 3/8-24 AND THE SHAFT IS AN M5.
  2. ASSEMBLE AS SHOWN AND ROTATE PAWL TO THE DESIRED LATCHING POSITION.
  3. PAWL SHOULD BE ADJUSTED TO GRIP MEASUREMENT WITH THE DOOR OPEN AND THE HANDLE IN THE LATCHED POSITION. USE TWO WRENCHES TO TIGHTEN.
  4. MATERIAL AND FINISH:  
 HANDLE AND SLEEVE: DIE CAST ZINC, SEE TABLE .  
 LONG PIN: 1112 STEEL, ZINC PLATED BRIGHT.  
 SPRING: 302 STAINLESS STEEL, PASSIVATED.  
 BUSHING: 12L14 STEEL, ZINC PLATE, PLUS SEALER OR WITH BLACK ORGANIC COATING.  
 SHAFT: 12L14 STEEL, ZINC PLATE, BLACK CHROMATE PLUS SEALER.  
 PAWL POSITION PIN: 1213 STEEL, ZINC PLATE PLUS SEALER OR WITH BLACK ORGANIC COATING.  
 PAWL AND PAWL RETAINING CLIP: 1010 STEEL, ZINC PLATE PLUS SEALER.  
 LOCKWASHERS: SPRING STEEL, ZINC PLATE PLUS SEALER.  
 NUTS: LOW CARBON STEEL, ZINC PLATE, PLUS SEALER.

62-20-XX PART NUMBER		 CONNECT • CREATE • INNOVATE	
CPB NUMBER STANDARD	THIRD ANGLE PROJECTION		
MILLIMETERS [IN]		DESCRIPTION No. 62-200 SERIES LATCH ASSEMBLY	
TOLERANCES UNLESS OTHERWISE NOTED			
ALL DIMENSIONS WITHOUT TOLERANCES ARE FOR REFERENCE ONLY.		SIZE A3	SYSTEM NX
PER ASME Y14.5M-1994		DWG NO. J-62-20	DATE 03NOV1992
PROPRIETARY ITEM EXCEPT FOR USES EXPRESSLY GRANTED IN WRITING, INFORMATION DISCLOSED HEREON IS CONFIDENTIAL AND ALL RIGHTS, PATENT AND OTHERWISE, ARE RESERVED BY SOUTHCO, INC.		DRAWN BY JSS	SCALE 1:1
		SHEET 1 OF 1	