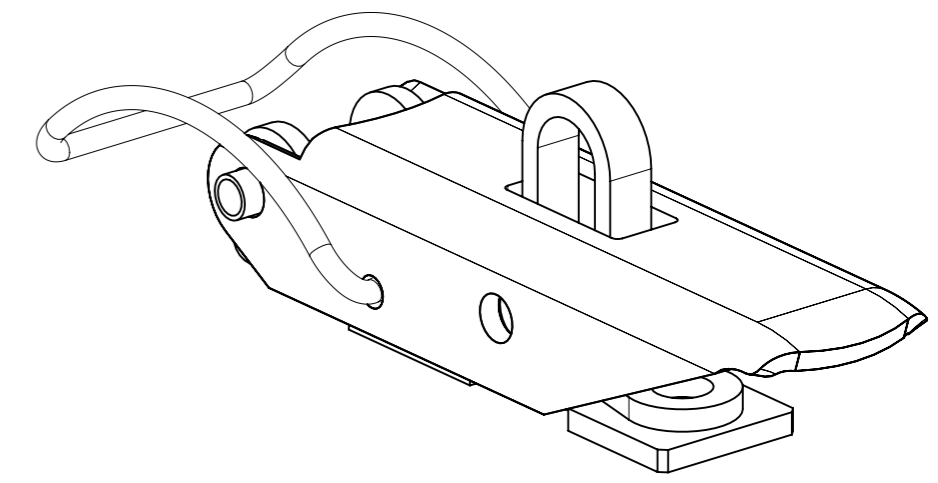
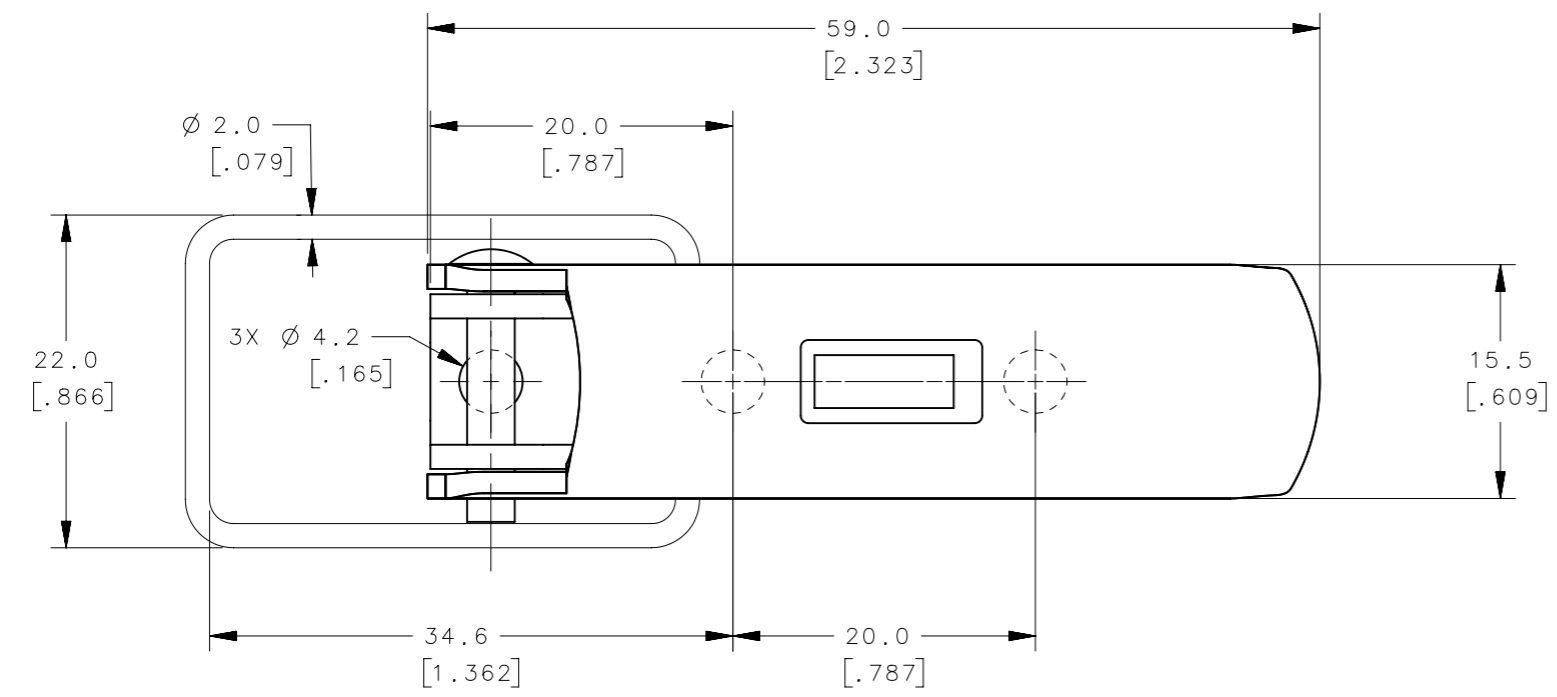
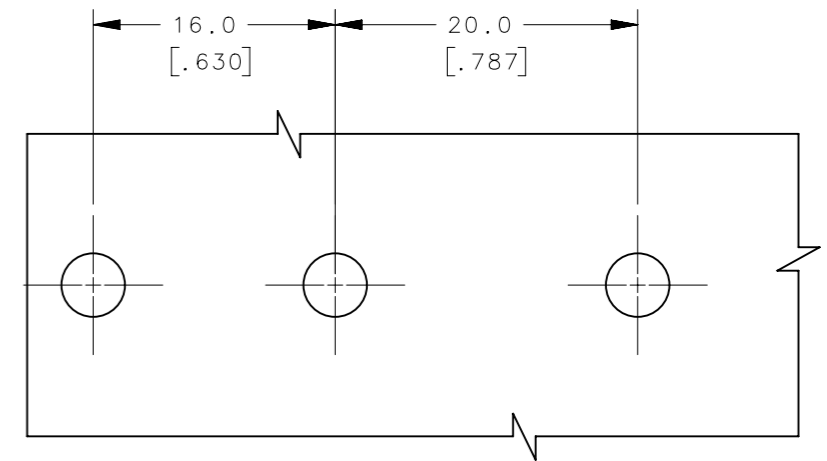
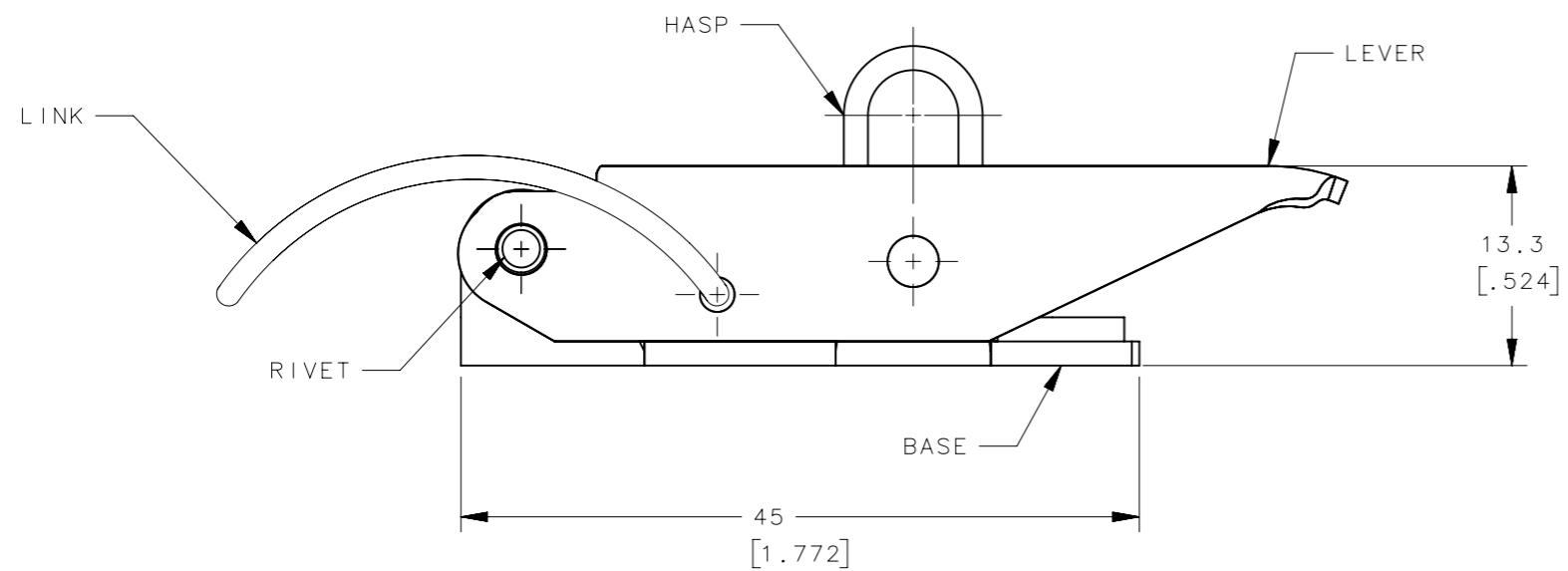


REVISION HISTORY			
REV	DATE	BY	DESCRIPTION
A	17SEP2014	JAJ/YGC	PRN: P2014-1848



SCALE 2:1



PANEL PREPARATION

NOTES:  
1. ALL RIVETS USED ARE STAINLESS STEEL.

TL-40-223-52	LATCH ASSEMBLY	STEINLESS STEEL	PASSIVATED
TL-40-223-24	LATCH ASSEMBLY	316 STAINLESS STEEL	ELECTROPOLISHED
TL-40-223-13	LATCH ASSEMBLY	STEEL	ZINC PLATE, BLACK CHROMATE
TL-40-223-07	LATCH ASSEMBLY	STEEL	ZINC PLATE, BLACK CHROMATE
PART NUMBER	TYPE OF COMPONENT	MATERIAL	FINISH

THIRD ANGLE PROJECTION						
MILLIMETERS [IN]	TOLERANCES UNLESS OTHERWISE NOTED			DESCRIPTION		
ALL DIMENSIONS WITHOUT TOLERANCES ARE FOR REFERENCE ONLY.	PER ASME Y14.5M-1994			Draw Latch ASSEMBLY		
PROPRIETARY ITEM	SIZE A3	SYSTEM NX	DWG NO. J-TL-40-223-XX	DRAWN BY JAJ/YGC		
EXCEPT FOR USES EXPRESSLY GRANTED IN WRITING, INFORMATION DISCLOSED HEREON IS CONFIDENTIAL AND ALL RIGHTS, PATENT AND OTHERWISE, ARE RESERVED BY SOUTHCO, INC.	DATE 17SEP2014	SCALE 2:1	SHEET 1 OF 1			