



# SOUTHCO No. 69 ARROWHEAD FASTENER ASSEMBLY

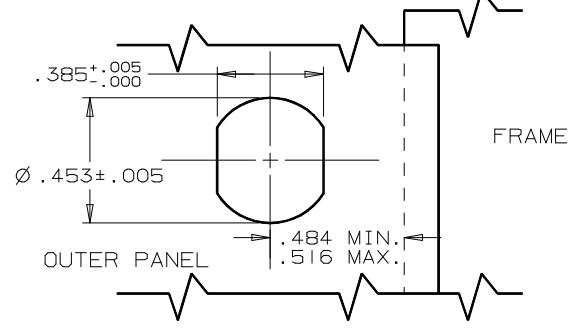
DATE	DRAWN	CHKD	SCALE	DRAWING NUMBER
13JUN73	RHB		1.5:1	J-69-10-401-11

REV.	DATE	BY-CHKD	REVISIONS		ITEM	PART NUMBER	MATERIAL	FINISH
D	09FEB92	JSS	PRN: 68-79		ASSEMBLY	69-10-401-11	—	—
E	04 DEC 97	TCP CHW	PRN: 69-90A		KNOB	—	THERMOPLASTIC	BLACK
F	10MAR99	MJS	PRN: 69-97		SHAFT	—	STEEL	DACROTIZED™
					WASHER*	—	STAINLESS STEEL	PASSIVATE
					SPRING*	—	STAINLESS STEEL	PASSIVATE
					SLEEVE	—	ZINC	NATURAL WITH CHEMICAL PROTECTIVE FILM
					GROOVE PIN	—	STAINLESS STEEL	NATURAL
					FERRULE	—	ALUMINUM	NATURAL
					SLEEVE NUT	—	STEEL	ZINC PLATE PER QQ-Z-325 TY. I CL.3 PLUS CHROMATE DIP - BRIGHT
					SHAFT NUT (2)	—	STEEL	DACROTIZED™
					PAWL	—	STEEL	DACROTIZED™
					LOCKWASHERS (2)	—	STEEL	DACROTIZED™

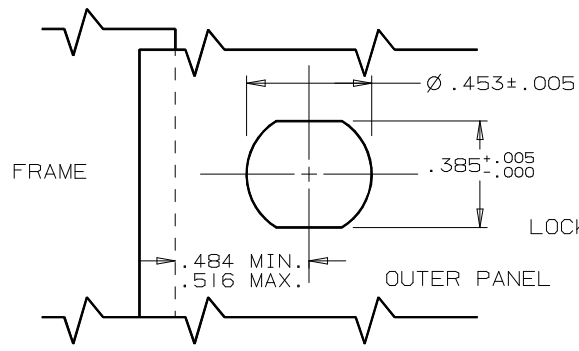
KNOB HEIGHT	MAX. OUTER PANEL	GRIP RANGE			
		PAWL AS SHOWN		PAWL REVERSED	
		MIN.	MAX.	MIN.	MAX.
.688 MAX.	.063	.125	.625	.625	1.125
.500 MIN.	.250	.313	.813	.813	1.313

\* WASHER AND SPRING ARE INTERNAL COMPONENTS, NOT SHOWN.

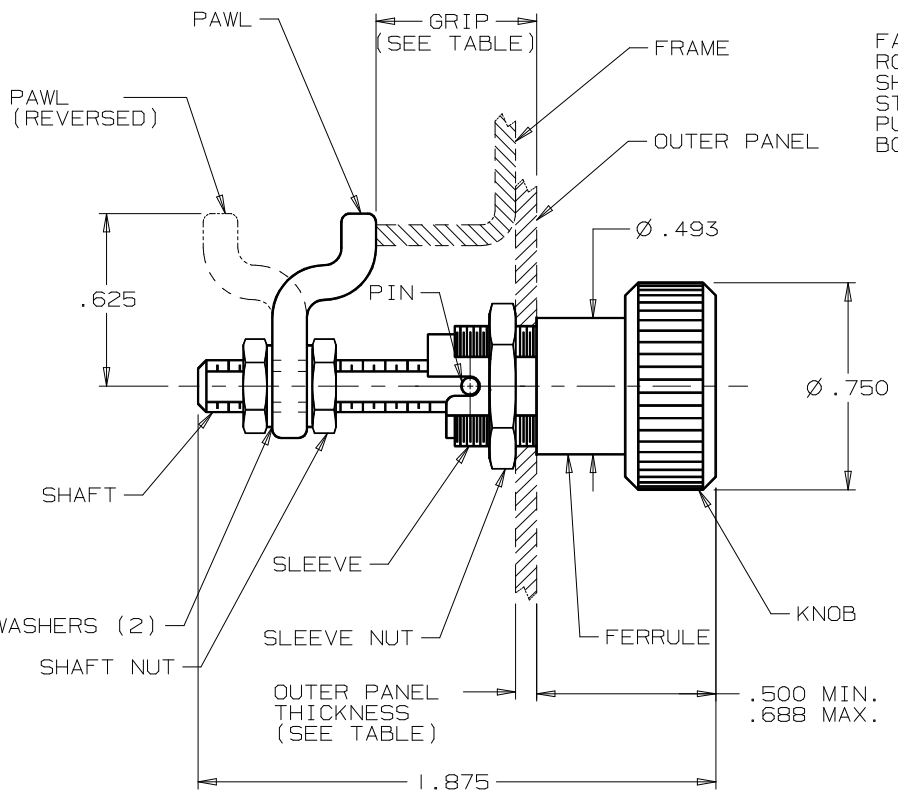
### PANEL PREPARATION



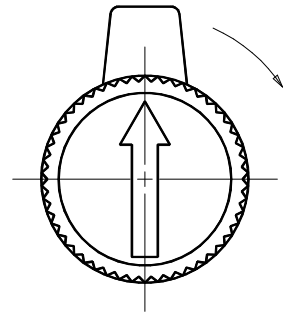
TYPE A INSTALLATION (COUNTER-CLOCKWISE TO OPEN)



TYPE B INSTALLATION (CLOCKWISE TO OPEN)



FASTENER OPERATES THRU 90° ROTATION IN DIRECTION AS SHOWN WITH A POSITIVE CLICK STOP AT BOTH EXTREMES. PAWL PULLS UP APPROX. .031 AT BOTH EXTREMES.



KNOB HEIGHT FROM OUTSIDE SURFACE OF PANEL IS ADJUSTABLE FROM .500 MIN. TO .688 MAX. BY ADJUSTING POSITION OF FERRULE ON THREADED SLEEVE BEFORE INSTALLING FASTENER. MAX. OUTER PANEL THICKNESS AND GRIP RANGE ARE DEPENDENT UPON SPECIFIC KNOB HEIGHT SELECTED. SEE TABLE.

FORMAT A | MAR 94

™METAL COATINGS INTL.

PROPRIETARY ITEM - EXCEPT FOR USES EXPRESSLY GRANTED IN WRITING INFORMATION DISCLOSED HEREON IS CONFIDENTIAL AND ALL RIGHTS PATENT AND OTHERWISE ARE RESERVED BY SOUTHCO, INC.

DIMENSIONS IN INCHES  
THIRD ANGLE PROJECTION

TOLERANCE UNLESS OTHERWISE NOTED  
THREE PLACE ( .XXX )  
TWO PLACE ( .XX )  
ANGLES ( DEG. )

DRAWING NUMBER
J-69-10-401-11