

southco[®]

PROPRIETARY ITEM - EXCEPT FOR USES EXPRESSLY GRANTED IN WRITING INFORMATION DISCLOSED HEREON IS CONFIDENTIAL AND ALL RIGHTS PATENT AND OTHERWISE ARE RESERVED BY SOUTHCO, INC.


SOUTHCO NO.81 SINGLE HOLE RECEPTACLE

DATE	DRAWN	CHKD	SCALE	DRAWING NUMBER
10-19-71	RHB		NTS	J-81-35-308-55

REV	DATE	DRAWN/CHKD	DESCRIPTION	ITEM	PART NO.	MATERIAL	FINISH
H	6-7-88	JSS/	PRN:81-87(SEE REC. PRNT)	ASSEMBLY	81-35-308-55	-	-
I	5MAR1993	JC/	PRN:S-1-03	RECEPTACLE	-	CASE HARDENED STEEL	SEE NOTE "A"
J	2JUL1993	MPF/	PRN:S-99-1-N-1	SHELL	-	CASE HARDENED STEEL	SEE NOTE "A"
K	14AUG1996	SWD/	PRN:81-152	SPRING	-	STAINLESS STEEL	ZINC FLAKE COATING
L	25NOV1996	SWD/	PRN:S-1-06A	RETAINER	-	STAINLESS STEEL	PASSIVATE
M	23JUN2005	BRP/RLR	PRN: P2005-0743				
N	29JUN2011	MJS/TVA	PRN: P2011-0845				
O	08MAY2015	CMS/MGG	PRN: P2015-0884				

INCHES

ALL DIMENSIONS WITHOUT TOLERANCES ARE FOR REFERENCE ONLY.

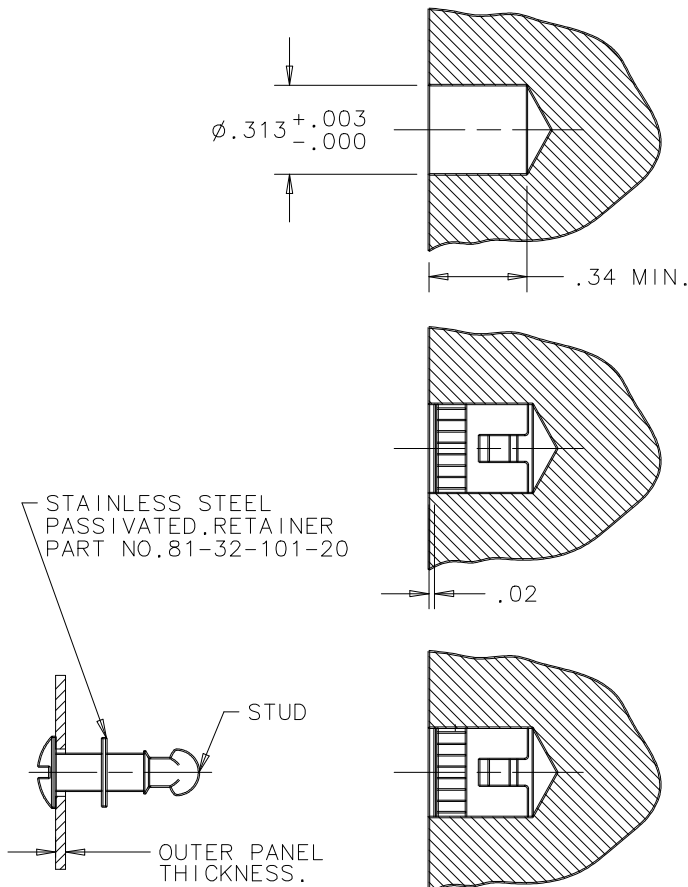
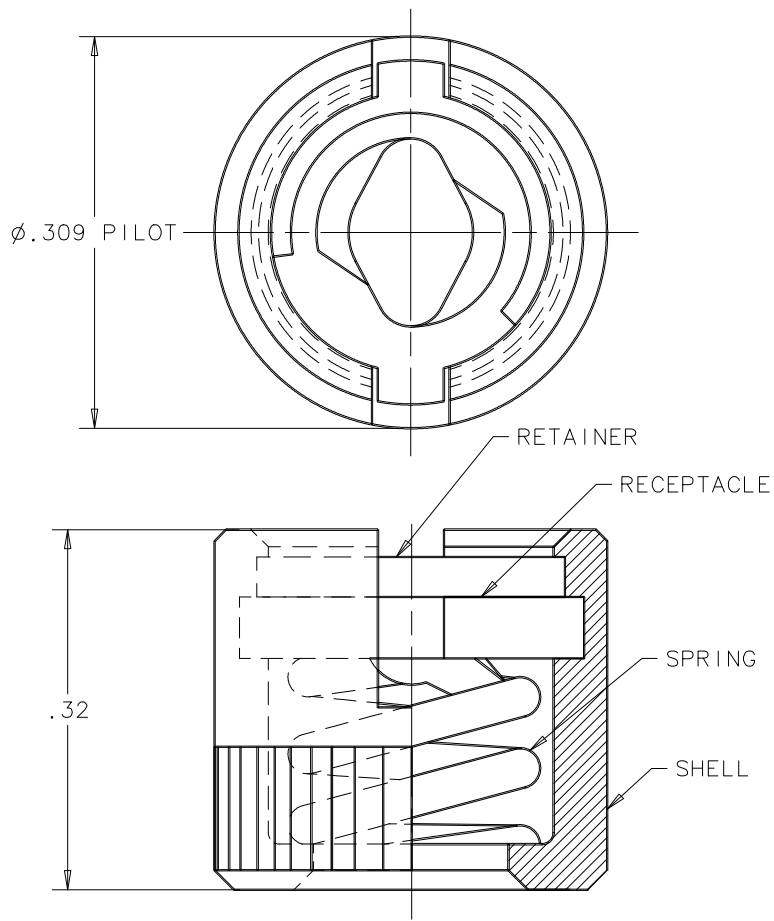


THIRD ANGLE PROJECTION

A
PAPER SIZE

RECEPTACLE ASSEMBLY

NOTES:
 A. ZINC PLATE, CHROMATE PLUS SEALER.
 B. FOR STAINLESS STEEL, PASSIVATED, CHANGE PART NUMBER SUFFIX FROM -55 TO -20.



INSTALLATION INSTRUCTIONS

1. DRILL $\phi.313$ HOLE IN INNER MEMBER.
2. PRESS RECEPTACLE ASSEMBLY INTO A DEPTH OF .020 BELOW SURFACE. SLOT MAY BE POSITIONED AS DESIRED; WHEN LOCKED UP, SLOT IN STUD WILL BE PERPENDICULAR TO SLOT IN RECEPTACLE.
3. TO SELECT THE PROPER GRIP STUD, USE TOTAL OF OUTER PANEL THICKNESS, PLUS A CONSTANT OF .050, PLUS ANY SPACE BETWEEN OUTER PANEL & INNER FRAME CREATED BY GASKETS, FLANGES, ETC.