

REVISION HISTORY			
REV	DATE	BY	DESCRIPTION
A	13JUN2015	DMS/YGC	PRN: P2015-1117

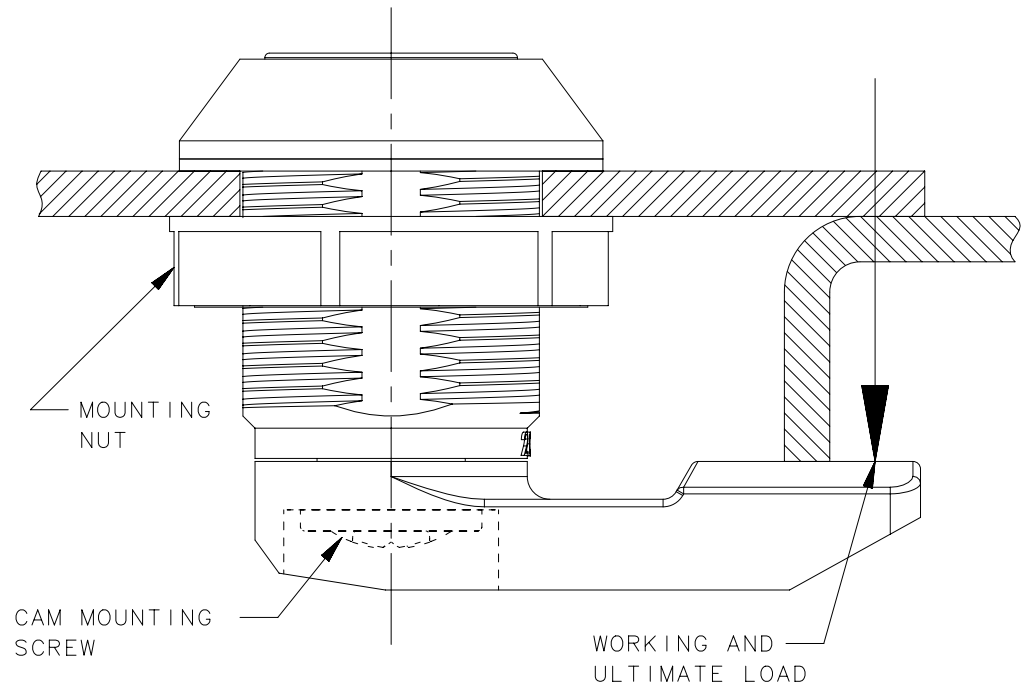
SOUTHCO PERFORMANCE GUIDELINES

THE PERFORMANCE GUIDELINES SHOWN ON THIS PAGE ARE SUPPLIED AS A GENERAL GUIDE ONLY, AS CONDITIONS VARY WITH EACH APPLICATION AND METHOD OF INSTALLATION. STRENGTH DATA GIVEN IS FOR FAILURE OF THE PRODUCT OR FOR SUFFICIENT DEFORMATION TO MAKE PRODUCT INOPERABLE. NO SAFETY FACTOR HAS BEEN APPLIED IT IS RECOMMENDED THAT THE USER REQUEST A PRODUCT SAMPLE FOR TESTING TO DETERMINE THE SUITABILITY OF THE PRODUCT FOR THE PURPOSE INTENDED AND USER'S PARTICULAR APPLICATION.

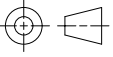

TEST DESCRIPTION	E5-4-WW3-YY1	GENERAL NOTES
MAXIMUM RECOMMENDED STATIC WORKING LOAD	130 N	SEE NOTE 1
AVERAGE ULTIMATE LOAD	300 N	SEE NOTE 2
MAXIMUM RECOMMENDED MOUNTING NUT TIGHTENING TORQUE	4 N.m	SEE NOTE 3
MAXIMUM RECOMMENDED CAM SCREW TIGHTENING TORQUE	2 N.m	SEE NOTE 4

NOTES:

1. STATIC WORKING LOAD IS THE MAXIMUM FORCE THAT THE PRODUCT WILL WITHSTAND WITHOUT AFFECTING THE OPERATION OR APPEARANCE OF THE PRODUCT.
2. AVERAGE ULTIMATE LOAD CAUSES FAILURE OF THE PRODUCT OR SUFFICIENT DEFORMATION TO MAKE THE PRODUCT INOPERABLE.
3. FAILURE OCCURRED WHEN THE THREADS ON NUT STRIPPED.
4. FAILURE OCCURRED WHEN THE THREADS ON DRIVER STRIPPED.



REF: trUNIKEY-21221.

	THIRD ANGLE PROJECTION 	 CONNECT • CREATE • INNOVATE			
	MILLIMETERS [IN]				
SURFACE AREA	TOLERANCES UNLESS OTHERWISE NOTED	DESCRIPTION E5-QUAD LATCH PLASTIC			
VOLUME	ALL DIMENSIONS WITHOUT TOLERANCES ARE FOR REFERENCE ONLY.	SIZE A4	SYSTEM NX	DWG NO. TD-E5-4	
PROPRIETARY ITEM <small>EXCEPT FOR USES EXPRESSLY GRANTED IN WRITING, INFORMATION DISCLOSED HEREON IS CONFIDENTIAL AND ALL RIGHTS, PATENT AND OTHERWISE, ARE RESERVED BY SOUTHCO, INC.</small>	PER ASME Y14.5M-1994	DRAWN BY DMS/YGC	DATE 13JUN2015	SCALE 2:1	SHEET 1 OF 1