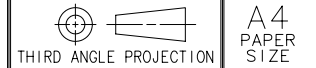
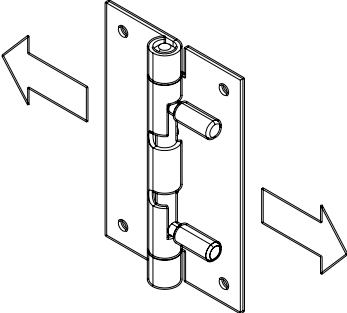
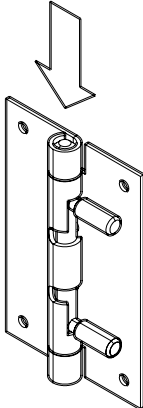


REV	DATE	DRAWN/CHKD	DESCRIPTION
A	07APR2010	MJS	INITIAL RELEASE

**SOUTHCO PERFORMANCE GUIDELINES**



THE PERFORMANCE GUIDELINES SHOWN ON THIS PAGE ARE SUPPLIED AS A GENERAL GUIDE ONLY, AS CONDITIONS VARY WITH EACH APPLICATION AND METHOD OF INSTALLATION. STRENGTH DATA GIVEN IS FOR FAILURE OF THE PRODUCT OR FOR SUFFICIENT DEFORMATION TO MAKE PRODUCT INOPERABLE. NO SAFETY FACTOR HAS BEEN APPLIED. IT IS RECOMMENDED THAT THE USER REQUEST A PRODUCT SAMPLE FOR TESTING TO DETERMINE THE SUITABILITY OF THE PRODUCT FOR THE PURPOSE INTENDED AND USER'S PARTICULAR APPLICATION.

	RADIAL LOAD TESTING	AXIAL LOAD TESTING
		
<b>F6 ASSEMBLY</b>	<b>AVERAGE ULTIMATE STATIC LOAD</b> NEWTONS (lbf)	<b>AVERAGE ULTIMATE STATIC LOAD</b> NEWTONS (lbf)
F6-22-S1-3W1	1110 (250)	2560 (576)

AVERAGE ULTIMATE LOAD - THE LOAD THAT CAUSES FAILURE OR EXCESSIVE DEFORMATION WHICH RENDERS THE PRODUCT TOTALLY INOPERABLE.