

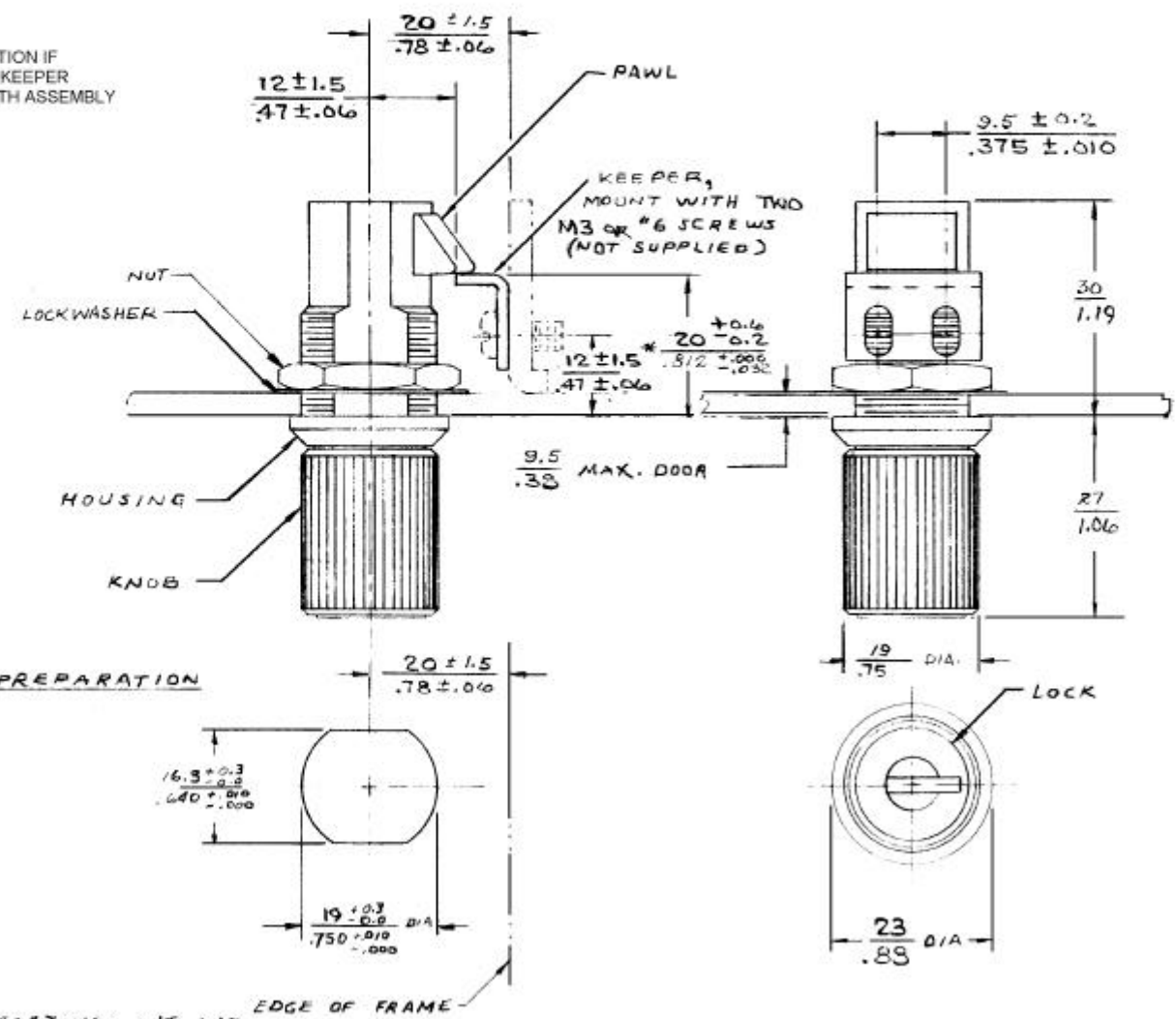


# #93 KEY LATCH ASSEMBLY

DATE	DRAWN	CHKD	SCALE	DRAWING NUMBER
11-23-82	A.C.Z.		N.T.S.	J-93-10-202-10

REV. LET.	DATE	BY-CHKD	REVISIONS	ASSY PART NO
G	11-16-88	SAL	SELECTED PREVIOUS REVIEWS FOR CHANGES PRINT: DRAW: 93-10	93-10-202-10
H	6-10-93	JGK	REN: 93-137	

\* FRAME LOCATION IF ADJUSTABLE KEEPER SUPPLIED WITH ASSEMBLY IS NOT USED



ASSEMBLY PART No. 93-10-202-10 CONSISTS OF 1 LATCH SUB-ASS'Y, 2 KEYS 1 NUT, 1 LOCKWASHER & 1 KEEPER PACKED IN A PLASTIC BAG.

HOUSING- DIE CAST ZINC, BRIGHT CHROME PLATED.

KNOB & PAWL ARE BLACK THERMOPLASTIC

KEEPER & LOCKWASHER ARE STEEL DACROTIZED

PLUG IN KNOB IS ALUMINUM, BLACK ORGANIC COATING.

NUT IS DIE CAST ZINC, CHEM. PROTECTIVE FILM

KEY TURNS 1/2 TURN CLOCKWISE TO LOCK, 1/2 TURN COUNTERCLOCKWISE TO UNLOCK. KEY IS REMOVEABLE IN LOCKED & UNLOCKED POSITIONS

KNOB TURNS 1/4 TURN IN EITHER DIRECTION TO UNLATCH.

MAY BE SLAM CLOSED WHEN LOCKED

MILLIMETER/INCH MILLIMETER INCH

TR METAL COATINGS INT. INC.

PROPRIETARY ITEM—EXCEPT FOR USES EXPRESSLY GRANTED IN WRITING, INFORMATION DISCLOSED HEREON IS CONFIDENTIAL AND ALL RIGHTS, PATENT AND OTHERWISE, ARE RESERVED BY SOUTHCO, INC.

TOLERANCE UNLESS OTHERWISE NOTED  
 METRIC MM - TWO PLACE (XX) ± ONE PLACE (X) ±  
 INCH - DECIMALS ± FRACTIONS ± ANGLES ±

DRAWING NUMBER  
 J-93-10-202-10