

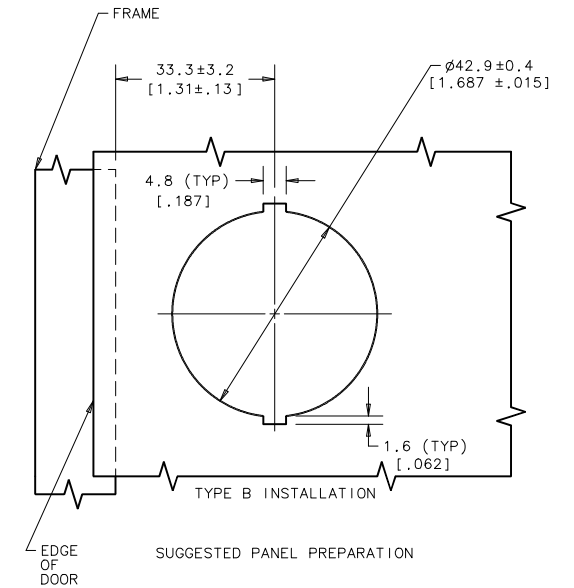
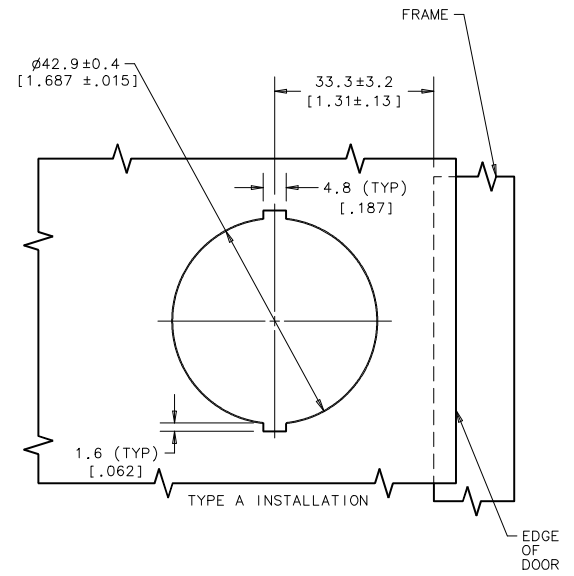
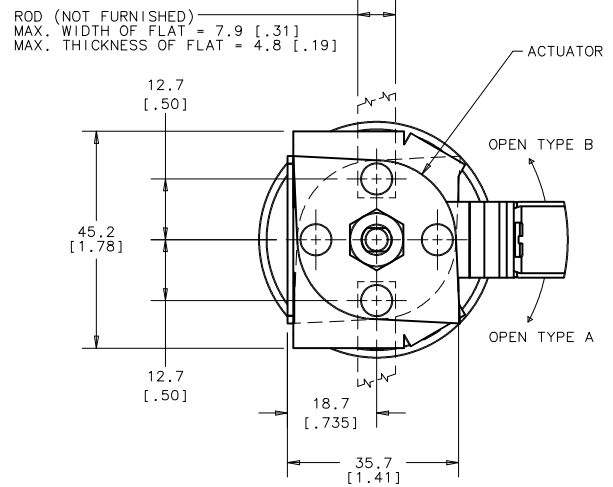
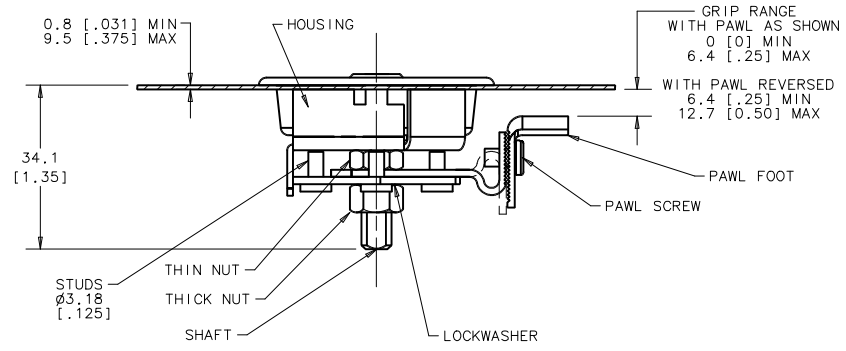
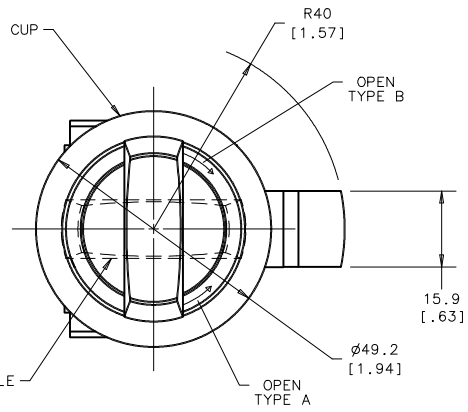
DRAWING NUMBER J-01-10-402	MILLIMETER (INCHES) DIMENSIONS WITHOUT TOLERANCES ARE FOR REFERENCE ONLY.	A3 PAPER SIZE THIRD ANGLE PROJECTION	SCALE 1:1	DATE	DRAWN	CHKD	SCALE
				01JUN89	MDM	CHW	1:1
NUMBER 01 RECESSED-CUP FASTENER, 400 SERIES, THREE POINT ASSEMBLY							
REV.	DATE	DRAWN	REVISION	ASSEMBLY	MATERIAL	FINISH	
				01-10-402-10	SEE NOTE A	SEE NOTE A	
				01-10-402-66	SEE NOTE A	SEE NOTE A	

PROPRIETARY ITEM - EXCEPT FOR USES EXPRESSLY GRANTED IN WRITING, INFORMATION DISCLOSED HEREIN IS UNCLASSIFIED AND OTHER RIGHTS ARE RESERVED BY SOUTHCORP, INC.



NOTES

- A- MATERIAL AND FINISH HOUSING, ACTUATOR, PAWL, AND PAWL FOOT: 1010 STEEL, ZINC PLATE, CHROMATE PLUS SEALER.
- STUDS, NUTS AND PAWL SCREW: STEEL, ZINC PLATE, CHROMATE PLUS SEALER.
- LOCKWASHERS: SPRING STEEL, ZINC PLATE CHROMATE PLUS SEALER.
- PIN: 303 STAINLESS STEEL, PASSIVATED.
- SHAFT: LOW CARBON STEEL, ZINC PLATE, CHROMATE PLUS SEALER.
- HANDLE: ABS, CHROME PLATED (-10) OR BLACK (-65).
- CUP: 1010 STEEL, CHROME PLATE (-10) OR BLACK ORGANIC COATING (-65).



SUGGESTED PANEL PREPARATION