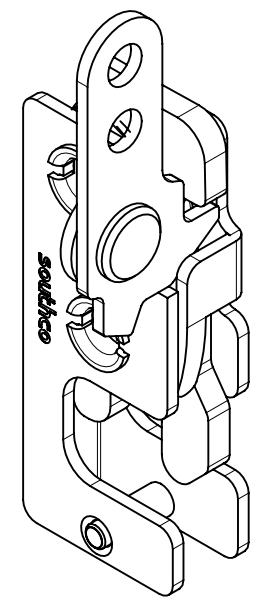
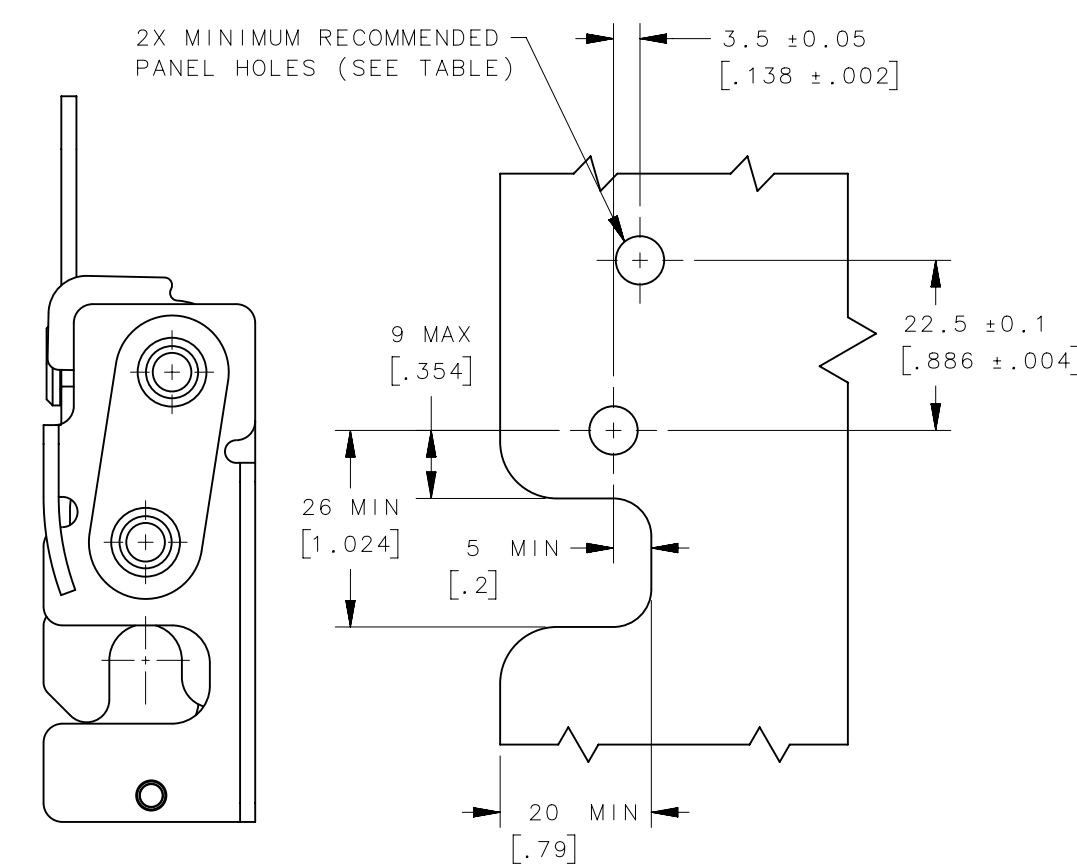
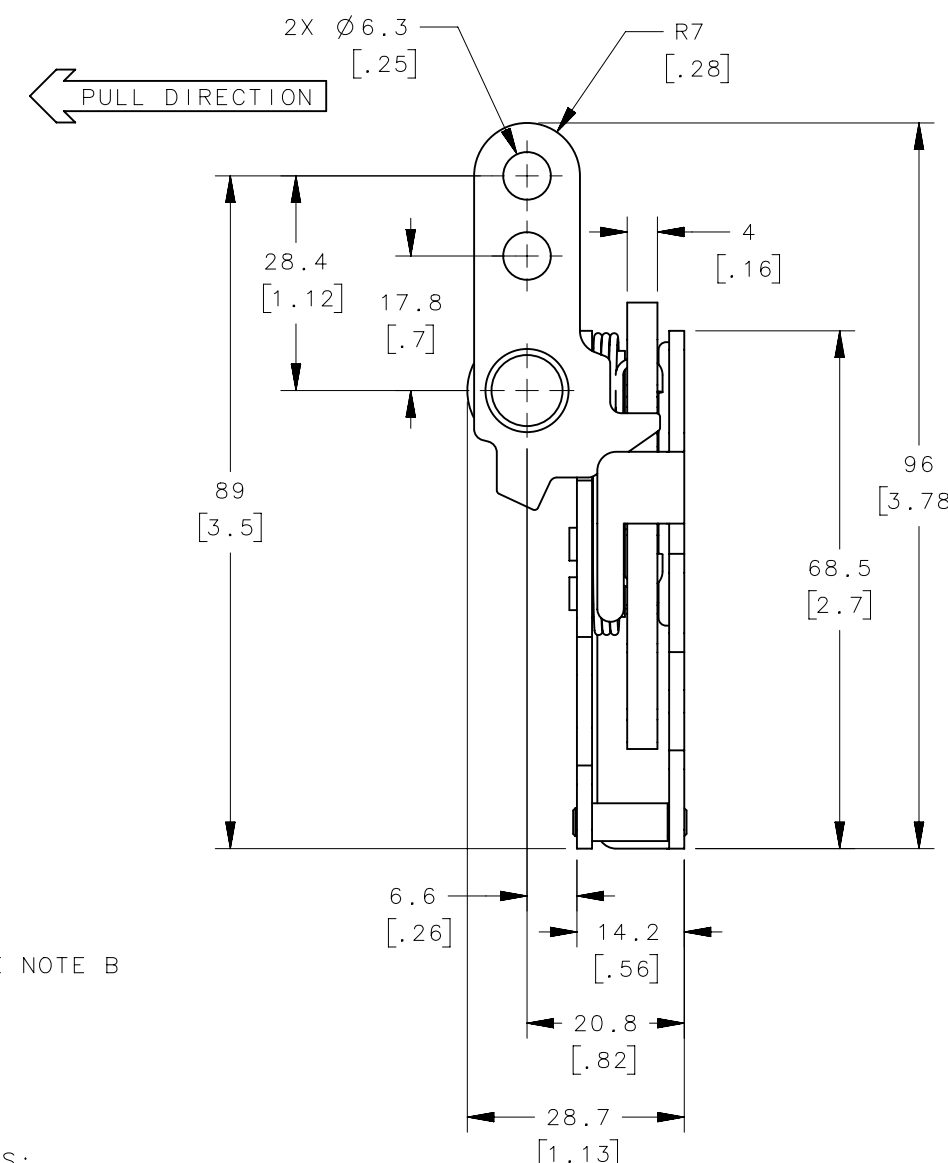
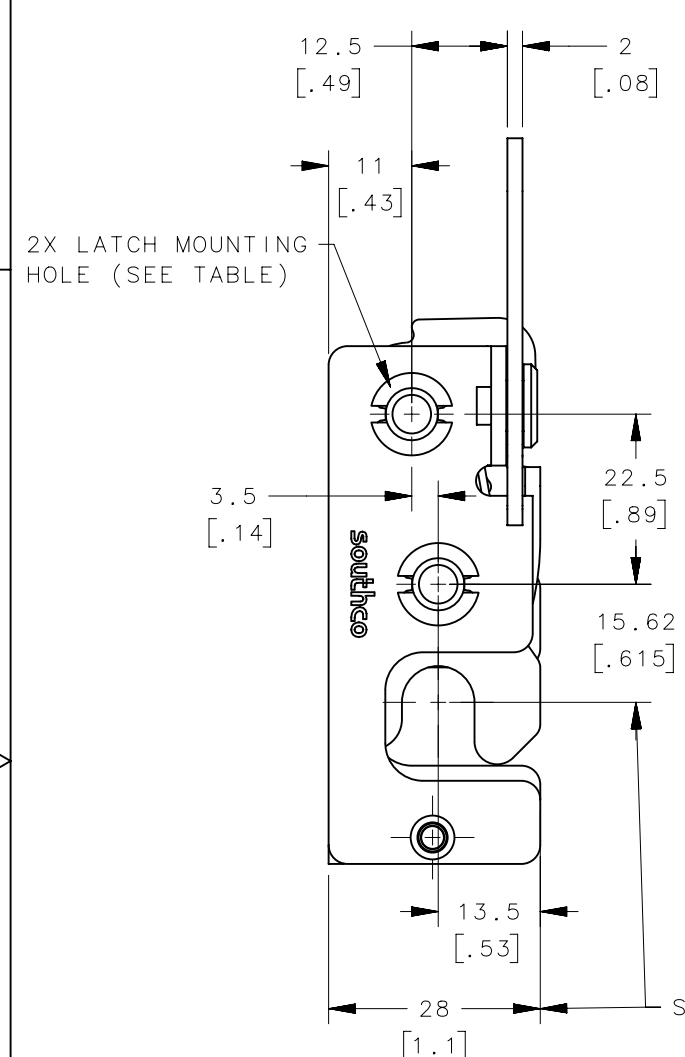


REVISION HISTORY			
REV	DATE	BY	DESCRIPTION
H	23AUG2023	PBJ/VK	PRN: P2023-1569



SCALE 1:1

PANEL PREPARATION

- NOTES:
- A. MATERIAL AND FINISH:
 - HOUSING, LEVER AND INTERNAL COMPONENTS: MATERIAL - STEEL
 - 10 ZINC PLATED, BRIGHT CHROMATE
 - 77 ZINC NICKEL, BRIGHT CHROMATE
 - PAWL AND TRIGGER: MATERIAL - HARDENED STEEL
 - 10 ZINC PLATED, BRIGHT CHROMATE
 - 77 ZINC NICKEL, BRIGHT CHROMATE
 - ZINC PLATE CHROMATE.
 - SPRING: STAINLESS STEEL, PASSIVATED
 - B. THESE DIMENSIONS REQUIRED FOR ± MOUNTING STRIKER BOLT.
 - C. Ø6.3 (.25) LEVER HOLES USE OPTIONAL CABLE RETAINER R4-0-43922 SOLD SEPARATELY.

R4-10-20-201-77	Ø 7.2mm THRU	SEE NOTE A	SEE NOTE A
R4-10-22-201-77	M6 THREAD		
R4-10-21-201-77	1/4-20 THREAD		
R4-10-20-201-10	Ø 7.2mm THRU		
R4-10-21-201-10	1/4-20 THREAD		
R4-10-22-201-10	M6 THREAD		
ASSEMBLY PART NUMBER	LATCH MOUNTING HOLE	MATERIAL	FINISH

THIRD ANGLE PROJECTION				
MILLIMETERS [IN]				
SURFACE AREA	TOLERANCES UNLESS OTHERWISE NOTED	DESCRIPTION		
VOLUME	ALL DIMENSIONS WITHOUT TOLERANCES ARE FOR REFERENCE ONLY.	R4 MINI ROTARY LATCH		
PROPRIETARY ITEM		SIZE	SYSTEM	DWG NO.
EXCEPT FOR USES EXPRESSLY GRANTED IN WRITING, INFORMATION DISCLOSED HEREON IS CONFIDENTIAL AND ALL RIGHTS, PATENT AND OTHERWISE, ARE RESERVED BY SOUTHCO, INC.	PER ASME Y14.5M-1994	B	NX	J-R4-10-20-201
		DRAWN BY	DATE	SCALE
		ACH/JCK	09DEC2010	1:1
				SHEET 1 OF 2

6

5

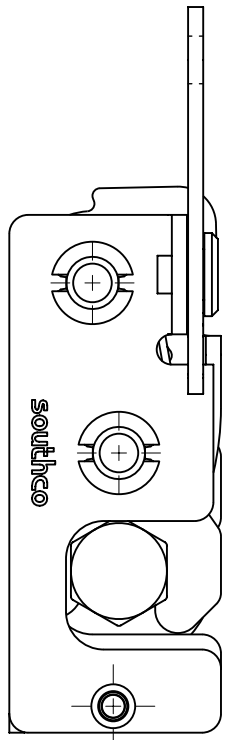
4

3

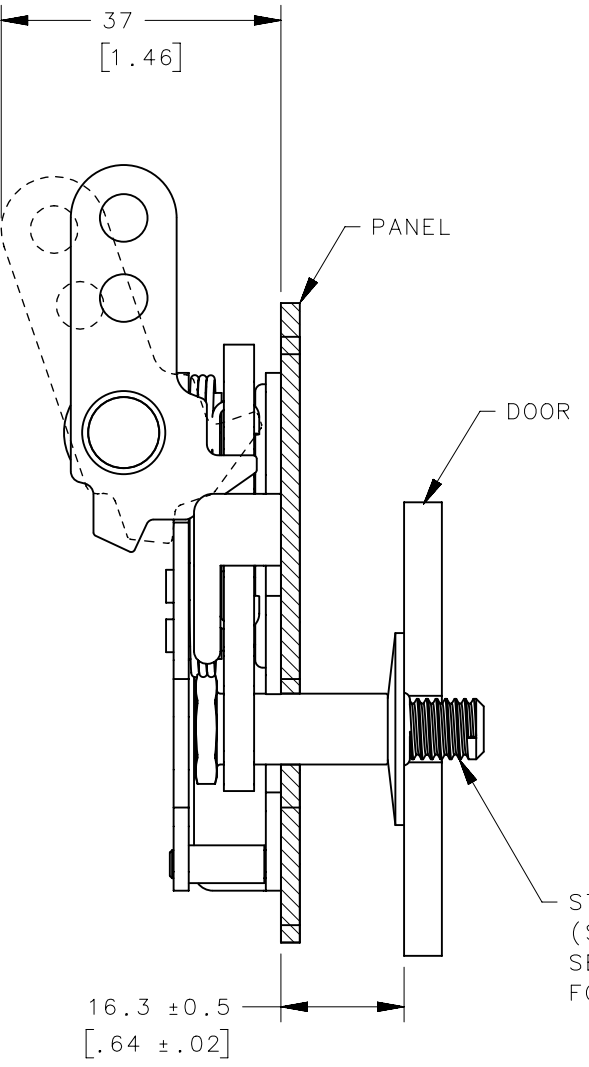
2

1

REVISION HISTORY			
REV	DATE	BY	DESCRIPTION
H	23AUG2023	PBJ/VK	PRN: P2023-1569



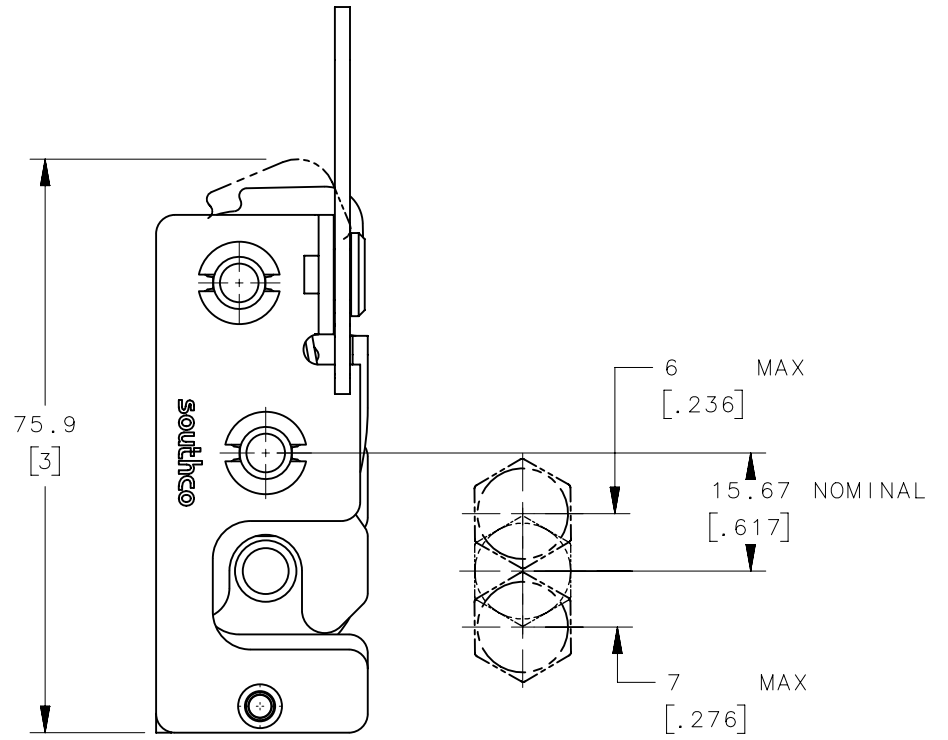
← PULL DIRECTION



PANEL

DOOR

STRIKER BOLT
(SOLD SEPARATELY,
SEE R4-90-121-10
FOR DETAILS)



MISALIGNMENT VIEW
(SEE NOTE B)

NOTES:

- A. THE TOLERANCE BETWEEN THE LATCH AND STRIKER BOLT ASSUMES A NON-RIGID DOOR INSTALLATION THAT WILL ALLOW THE DOOR TO MOVE INTO THE NOMINAL POSITION DURING LATCHING. RIGID DOORS MUST HAVE THE STRIKER INSTALLED PER THE PANEL PREPARATION RECOMMENDATION.
- B. THE MISALIGNMENT VIEW ASSUMES THE LATCH IS CONNECTED TO A PERFECTLY RIGID DOOR AND HINGE; THEREFORE, THERE IS NO DOOR AND/OR HINGE SLACK ASSOCIATED WITH THESE DIMENSIONS. THE MISALIGNMENT VIEW DOES NOT TAKE FLEXING OF THE STRIKER BOLT INTO ACCOUNT.

R4-10-20-201-10	Ø 7.2 THRU	Ø 7.2 [.299]
R4-10-21-201-10	1/2-20 THREAD	Ø 6.8 [.268]
R4-10-22-201-10	M6X1 THREAD	Ø 6.4 [.252]
R4-10-20-201-77	Ø 7.2 THRU	Ø 7.2 [.299]
R4-10-21-201-77	1/2-20 THREAD	Ø 6.8 [.268]
R4-10-22-201-77	M6X1 THREAD	Ø 6.4 [.252]
ASSEMBLY PART NUMBER	MOUNTING STYLE	MINIMUM PANEL HOLE

THIRD ANGLE PROJECTION		 CONNECT • CREATE • INNOVATE	
MILLIMETERS [IN]			
SURFACE AREA		DESCRIPTION	
VOLUME		R4 MINI ROTARY LATCH INLINE - LEFT HAND	
PROPRIETARY ITEM <small>EXCEPT FOR USES EXPRESSLY GRANTED IN WRITING, INFORMATION DISCLOSED HEREON IS CONFIDENTIAL AND ALL RIGHTS, PATENT AND OTHERWISE, ARE RESERVED BY SOUTHCO, INC.</small>		SIZE B	SYSTEM NX
PER ASME Y14.5M-1994		DWG NO. J-R4-10-20-201	DATE 09DEC2010
		SCALE 1:1	SHEET 2 OF 2

6

5

4

3

2

1