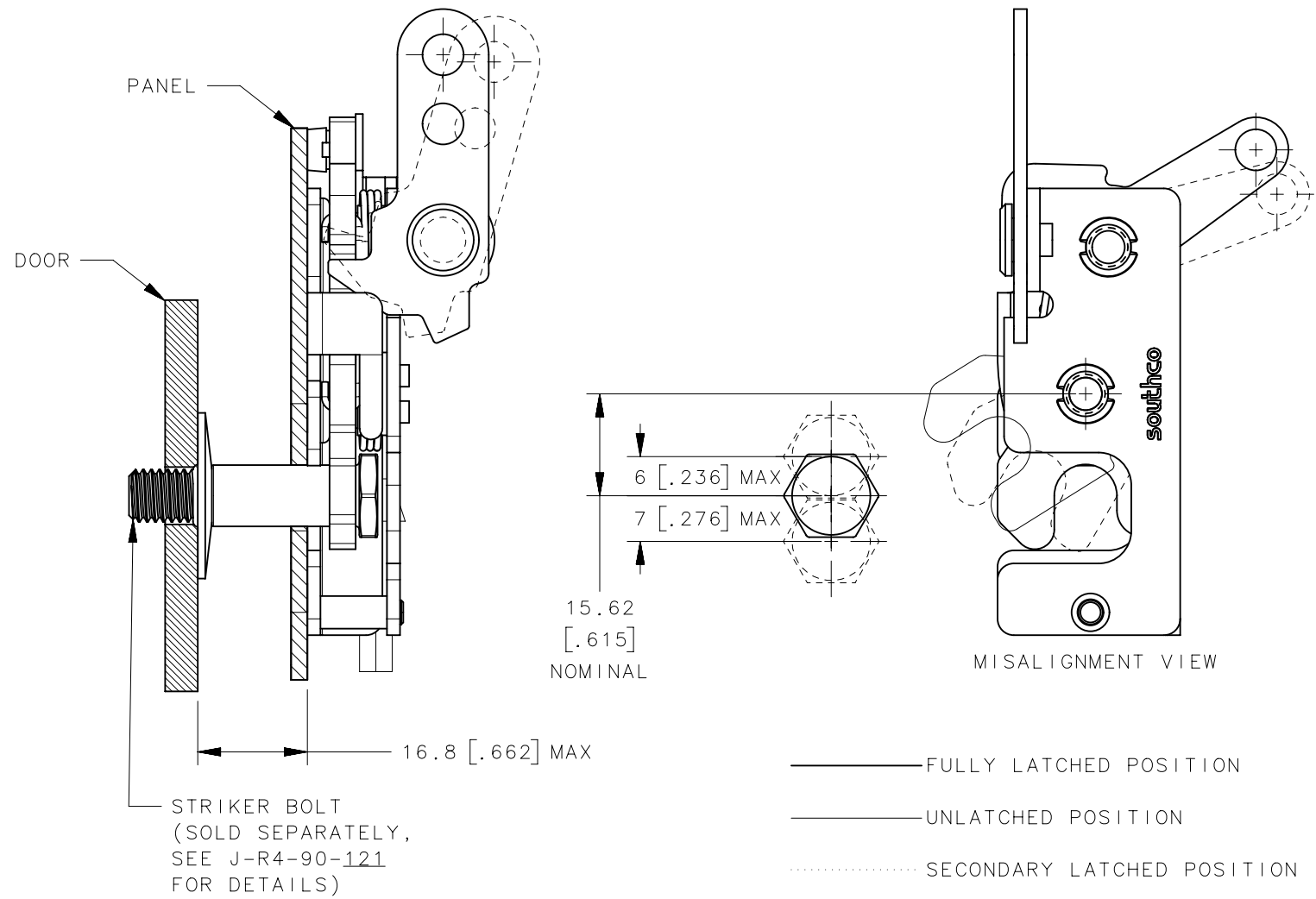
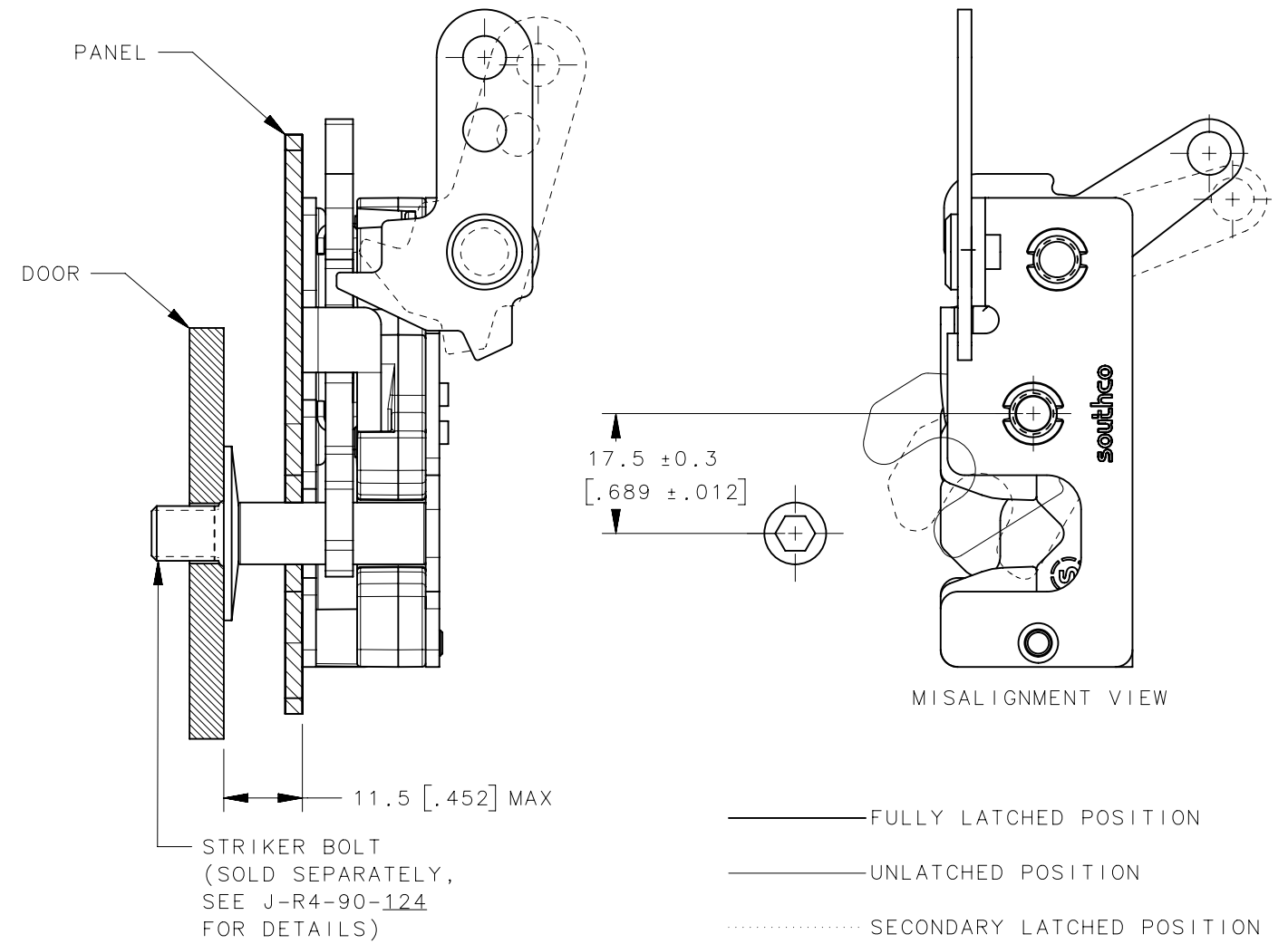


REVISION HISTORY			
REV	DATE	BY	DESCRIPTION
E	26AUG2015	CMG/DGJ	PRN: P2015-1747

STANDARD



WITH INTEGRATED BUMPER



NOTES:

- A. THE TOLERANCE BETWEEN THE LATCH AND STRIKER BOLT ASSUMES A NON-RIGID DOOR INSTALLATION THAT WILL ALLOW THE DOOR TO MOVE INTO THE NOMINAL POSITION DURING LATCHING. RIGID DOORS MUST HAVE THE STRIKER INSTALLED PER THE PANEL PREPARATION RECOMMENDATION.
- B. THE MISALIGNMENT VIEW ASSUMES THE LATCH IS CONNECTED TO A PERFECTLY RIGID DOOR AND HINGE; THEREFORE, THERE IS NO DOOR AND/OR HINGE SLACK ASSOCIATED WITH THESE DIMENSIONS. THE MISALIGNMENT VIEW DOES NOT TAKE FLEXING OF THE STRIKER BOLT INTO ACCOUNT.

R4-10-X0-70X-10	Ø 7.2mm THRU	Ø 7.2 [.299]
R4-10-X1-70X-10	1/4-20 THREAD	Ø 6.8 [.268]
R4-10-X2-70X-10	M6x1 THREAD	Ø 6.4 [.252]
ASSEMBLY PART NUMBER	MOUNTING STYLE	MINIMUM PANEL HOLE

THIRD ANGLE PROJECTION			southco [®] CONNECT · CREATE · INNOVATE	
MILLIMETERS [IN]				
TOLERANCES UNLESS OTHERWISE NOTED	DESCRIPTION R4-10 ROTARY LATCH, BOTTOM PULL WITH SECONDARY TRIGGER, BUMPER OPTIONAL, RH			
ALL DIMENSIONS WITHOUT TOLERANCES ARE FOR REFERENCE ONLY.	SIZE B	SYSTEM NX	DWG NO. J-R4-10-7R	
PROPRIETARY ITEM EXCEPT FOR USES EXPRESSLY GRANTED IN WRITING, INFORMATION DISCLOSED HEREON IS CONFIDENTIAL AND ALL RIGHTS, PATENT AND OTHERWISE, ARE RESERVED BY SOUTHCO, INC.	PER ASME Y14.5M-1994	DRAWN BY CMG/DGJ	DATE 11JUN2015	SCALE 1:1 SHEET 2 OF 3

6

5

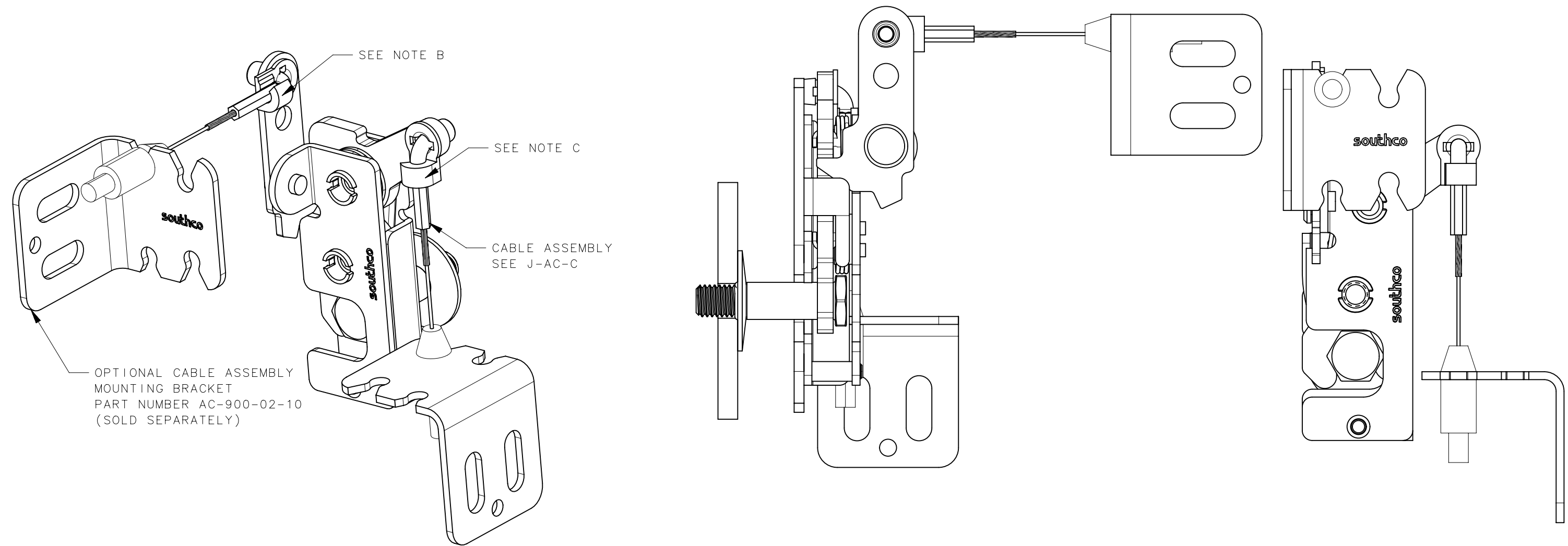
4

3

2

1

REVISION HISTORY			
REV	DATE	BY	DESCRIPTION
E	26AUG2015	CMG/DGJ	PRN: P2015-1747

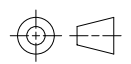


NOTES:

A. FOR OPTIONAL LINK RETAINERS (SOLD SEPARATELY), SEE J-R4-0-43922

B. FOR LEVER RETAINER ONLY, USE R4-0-43922

C. FOR TRIGGER RETAINER ONLY, USE R4-0-43922-2

THIRD ANGLE PROJECTION 		southco [®] CONNECT • CREATE • INNOVATE	
MILLIMETERS [IN]			
TOLERANCES UNLESS OTHERWISE NOTED		DESCRIPTION R4-10 ROTARY LATCH, BOTTOM PULL WITH SECONDARY TRIGGER, BUMPER OPTIONAL, RH	
ALL DIMENSIONS WITHOUT TOLERANCES ARE FOR REFERENCE ONLY.		SIZE B	SYSTEM NX
PROPRIETARY ITEM <small>EXCEPT FOR USES EXPRESSLY GRANTED IN WRITING, INFORMATION DISCLOSED HEREON IS CONFIDENTIAL AND ALL RIGHTS, PATENT AND OTHERWISE, ARE RESERVED BY SOUTHCO, INC.</small>		DWG NO. J-R4-10-7R	DATE 11JUN2015
PER ASME Y14.5M-1994		DRAWN BY CMG/DGJ	SCALE 1:1
		SHEET 3 OF 3	

6

5

4

3

2

1