

# R4-30-1 I -70 B-M

REVISION HISTORY			
REV	DATE	BY	DESCRIPTION
C	30MAR2021	ABK/VK	PRN: P2021-0640

**I** MOUNTING OPTION

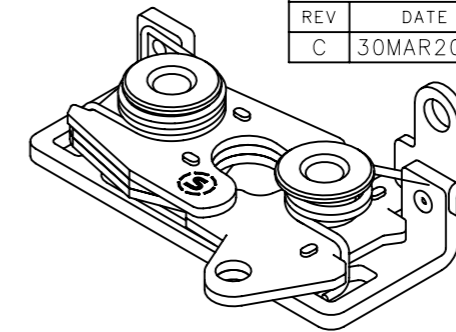
- 0 6.7 mm THRU HOLE
- 1 1/4-20 THREAD
- 2 M6 THREAD

**B** LATCHING

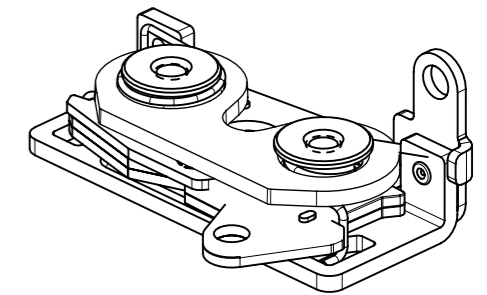
- 1 STANDARD
- 5 INTEGRATED BUMPER

**M** MATERIAL

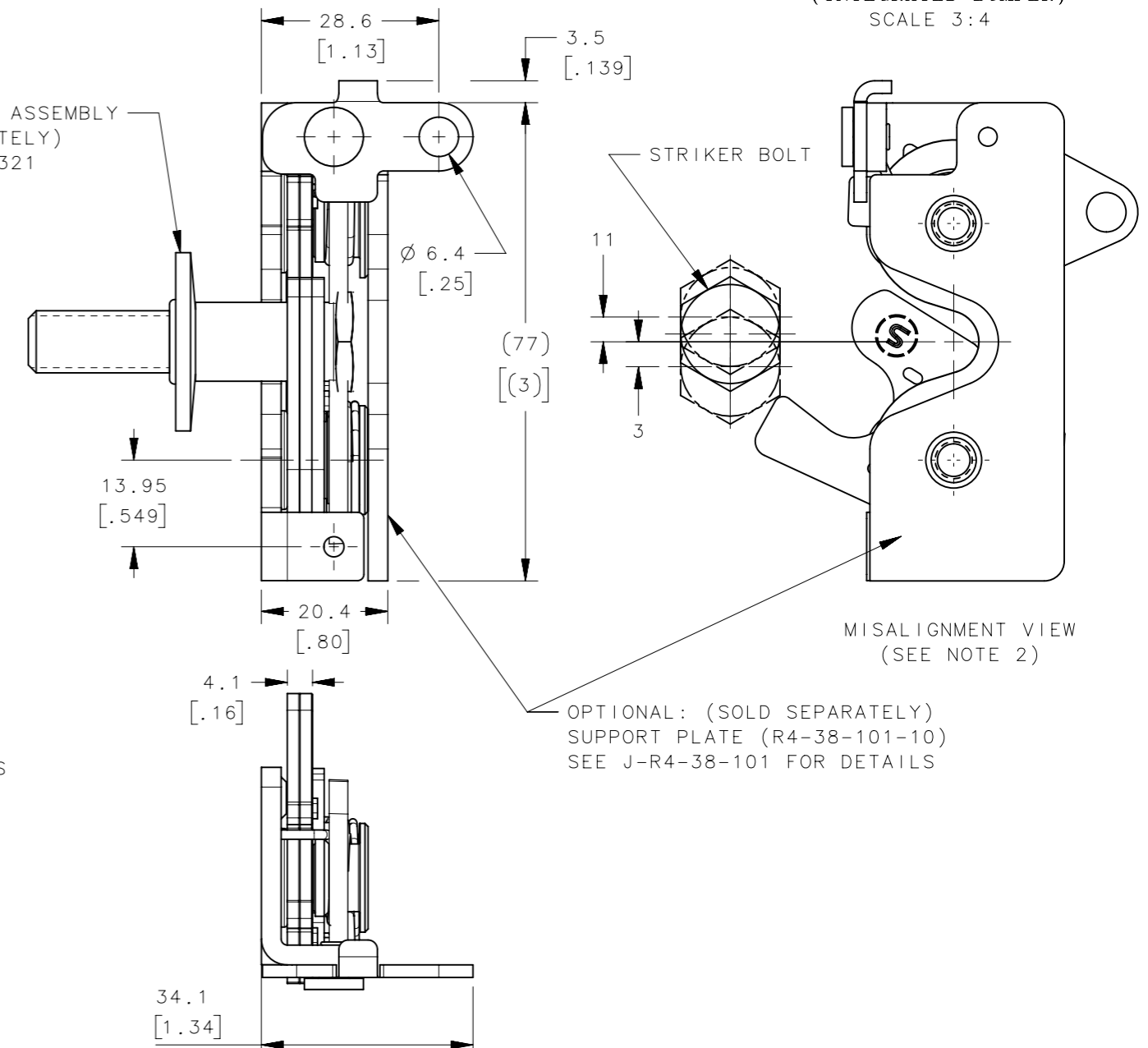
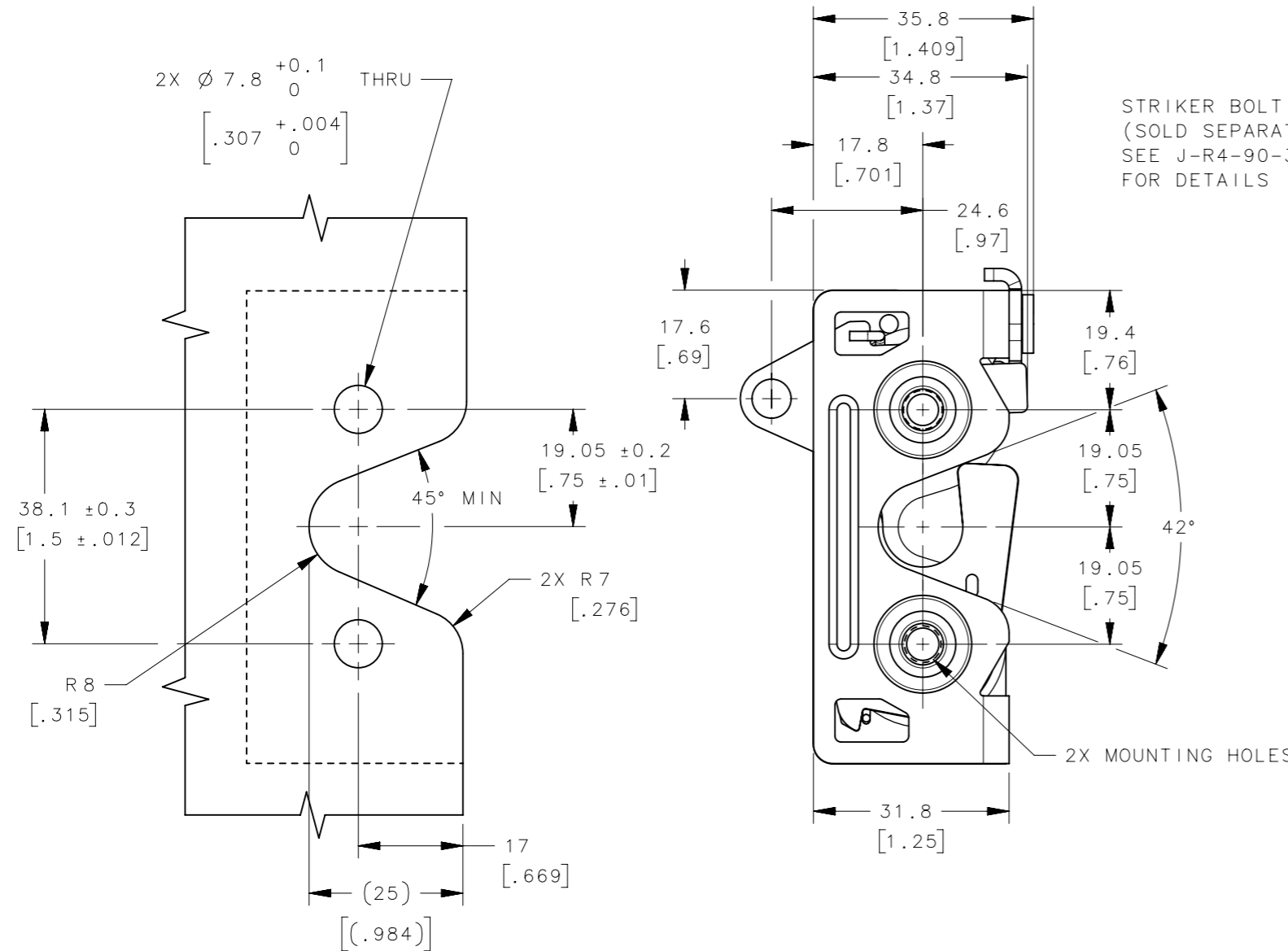
- 10 STEEL, ZINC PLATED
- 15 STEEL, BLACK ZINC NICKEL PLATED
- 77 STEEL, ZINC NICKEL PLATED



R4-30-31-701-M  
(STANDARD)  
SCALE 3:4



R4-30-31-705-M  
(INTEGRATED BUMPER)  
SCALE 3:4



PANEL PREPARATION

NOTES:

1. MATERIAL AND FINISH:
  - A. HOUSING, LEVER AND INTERNAL COMPONENTS: STEEL
  - B. PAWL AND TRIGGER: HARDENED STEEL
  - C. SPRINGS: STAINLESS STEEL, PASSIVATED
2. THE MISALIGNMENT VIEW ASSUMES THE LATCH IS CONNECTED TO A PERFECTLY RIGID DOOR AND HINGE; THEREFORE, THERE IS NO DOOR AND/OR HINGE SLACK ASSOCIATED WITH THESE DIMENSIONS, THE MISALIGNMENT VIEW DOES NOT TAKE FLEXING OF THE STRIKER BOLT INTO ACCOUNT.
3. SAME AS R4-30-3X-701-10 EXCPT SINGLE STAGE.

THIRD ANGLE PROJECTION		<p>CONNECT • CREATE • INNOVATE</p>	
MILLIMETERS [IN]			
TOLERANCES UNLESS OTHERWISE NOTED		DESCRIPTION	
ALL DIMENSIONS WITHOUT TOLERANCES ARE FOR REFERENCE ONLY		R4 LATCH ASSEMBLY - DUAL TRIGGER RH, STEEL, SINGLE STAGE	
PROPRIETARY ITEM EXCEPT FOR USES EXPRESSLY GRANTED IN WRITING, INFORMATION DISCLOSED HEREON IS CONFIDENTIAL AND ALL RIGHTS, PATENT AND OTHERWISE, ARE RESERVED BY SOUTHCO, INC.	PER ASME Y14.5M-1994	SIZE A3	SYSTEM NX
		DWG NO. J-R4-30-10-701-10	SCALE 1:1
		DRAWN BY RKS/VK	DATE 11DEC2019
		SHEET 1 OF 1	