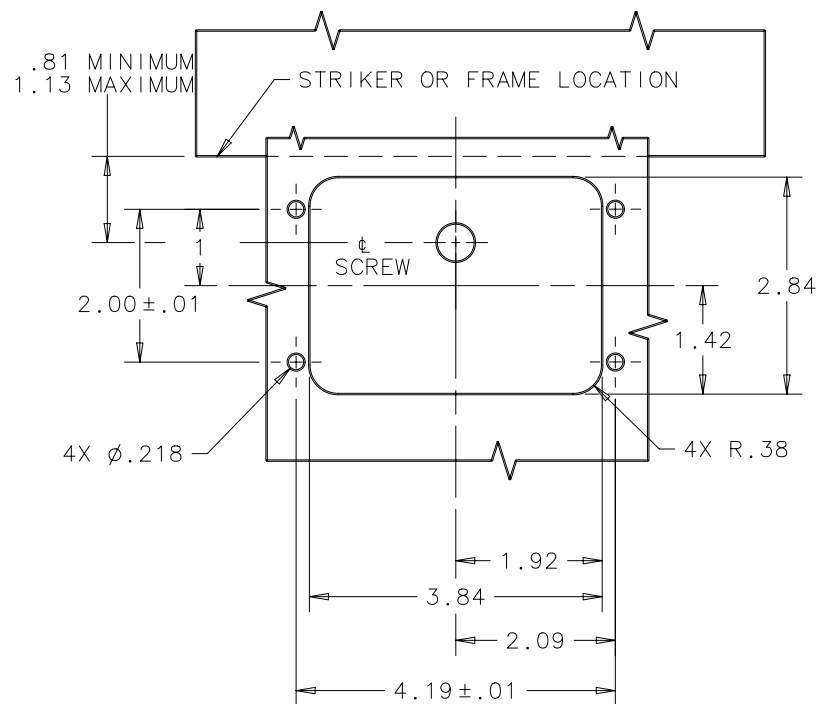
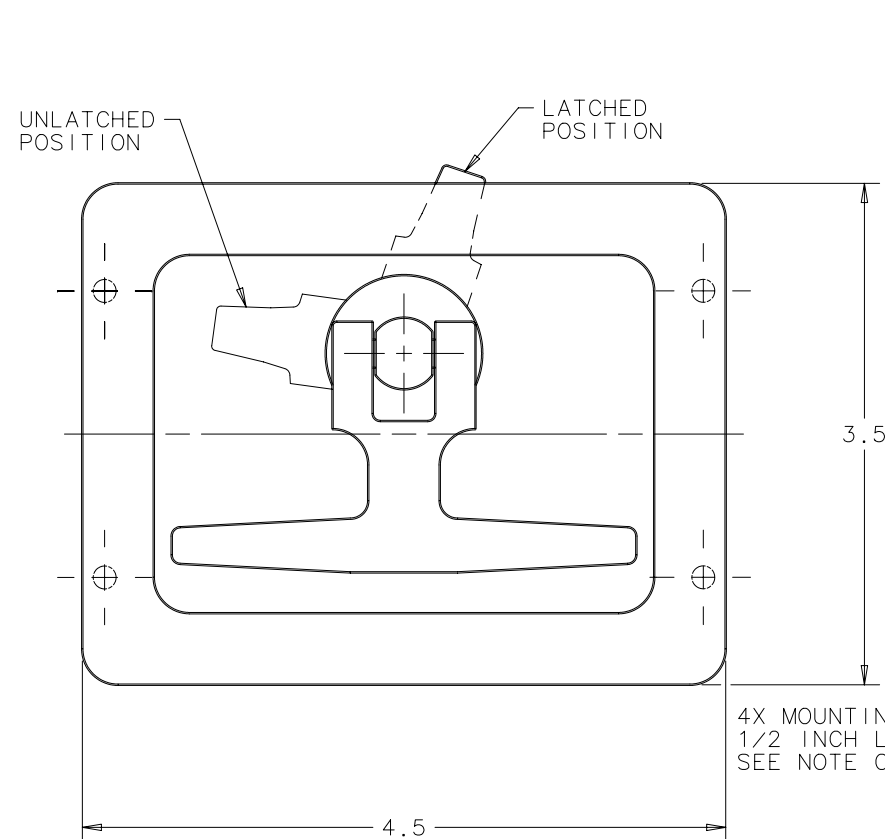


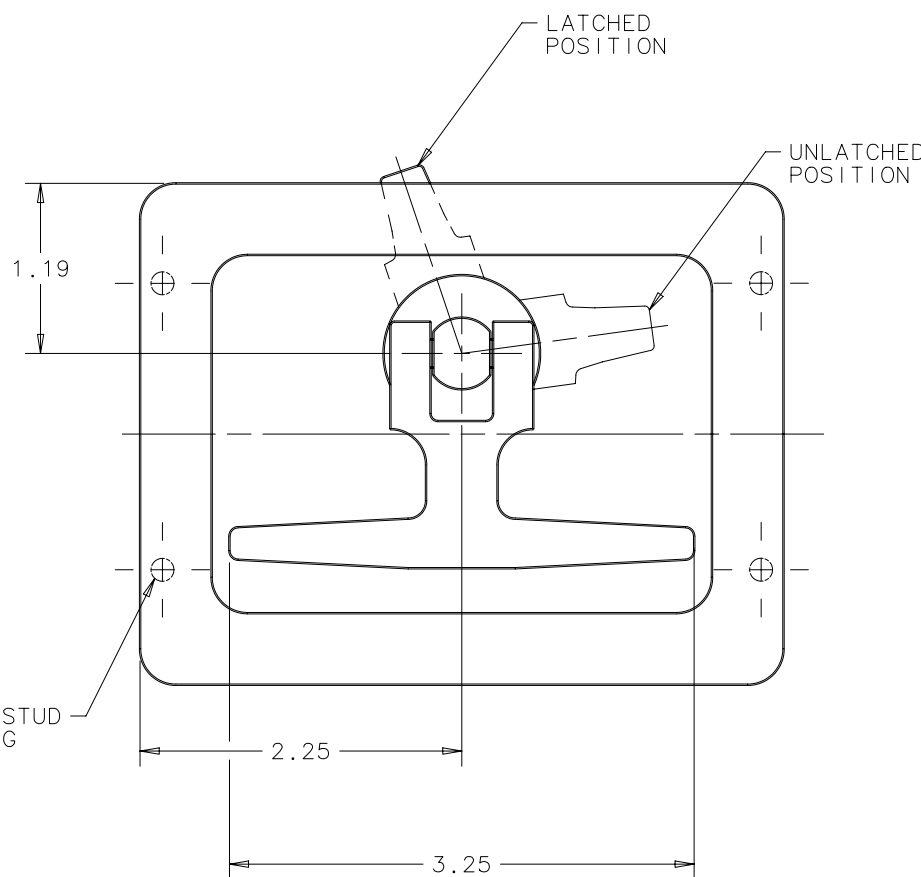
- NOTES:
 A. TIGHTENING TORQUE OF MOUNTING NUTS NOT TO EXCEED 25 in-lbs
 B. MOUNTING HEX NUT AND LOCKWASHER 4 EACH INCLUDED UNASSEMBLED



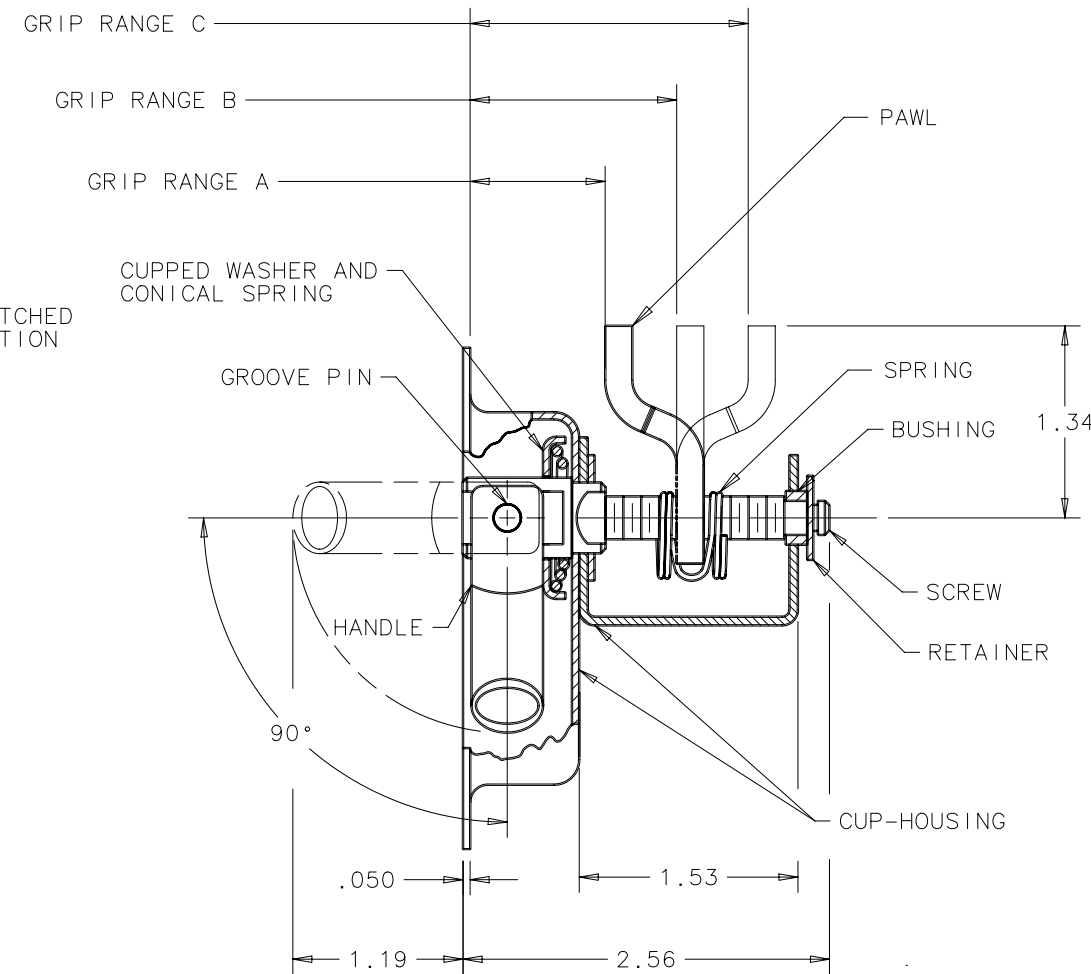
PANEL PREPARATION



TYPE A
(RIGHT HAND)



TYPE B
(LEFT HAND)



THESE ASSEMBLIES ARE NON-REPAIRABLE
 ITEMS AND COMPONENTS ARE NOT AVAILABLE
 AS REPLACEMENT OR REPAIR PARTS.

southco

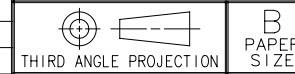
PROPRIETARY ITEM - EXCEPT FOR USES EXPRESSLY GRANTED IN WRITING INFORMATION DISCLOSED HEREON IS CONFIDENTIAL AND ALL RIGHTS PATENT AND OTHERWISE ARE RESERVED BY SOUTHCO, INC.

**No.24 FASTENER ASSEMBLY
 ADJUSTABLE PAWL TYPE (STUD MOUNT)**

DATE	DRAWN	CHKD	SCALE	DRAWING NUMBER
6-1-79	HAR		.75:1	J-24-20-101-10

REV	DATE	DRAWN/CHKD	DESCRIPTION	ITEM	PART NUMBER	MATERIAL	FINISH
J	22MAR96	PCB	PRN: 14-88	ASSEMBLY	SEE TABLE	-	-
K	22NOV96	JGK	PRN: S-1-06A	GROOVE PIN	-	STEEL	ZINC PLATE PLUS BRIGHT CHROMATE
L	04AUG2004	RLR/AJH	PRN: P2004-0492	CONICAL SPRING	-	STAINLESS STEEL	PASSIVATE
M	12APR2005	BRP/AJH	PRN: P2005-0592	PAWL	-	STEEL/HEAT TREAT	ZINC PLATE CHROMATE PLUS SEALER
N	04DEC2007	GDW/JSS	PRN: P2007-1490	SPRING	-	STAINLESS STEEL	PASSIVATE
O	11MAR2008	VWA/VGV	PRN: P2008-0252	RETAINER	-	STEEL	ZINC PLATE CHROMATE PLUS SEALER
P	27MAY2009	MJS/SM	PRN: P2009-0660	BUSHING	-	STEEL	ZINC PLATE CHROMATE PLUS SEALER
				SCREW	-	STEEL	ZINC FLAKE COATING
				HANDLE	-	DIE CAST ZINC	ZINC FLAKE COATING
				CUPWASHER	-	STEEL	ZINC FLAKE COATING
				CUP HOUSING	-	STEEL	ZINC FLAKE COATING
				HEX NUT (4)	-	STEEL	ZINC FLAKE COATING
				LOCKWASHER (4)	-	STEEL	ZINC PLATE PLUS YELLOW CHROMATE DIP

ASSEMBLY	LETTER	GRIP RANGE		TYPE
		MIN	MAX	
24-20-101-10	A	.45	1.35	A
24-20-102-10	B	.95	1.86	A
24-20-104-10	C	1.45	2.32	A
24-20-201-10	A	.45	1.35	B



INCHES

ALL DIMENSIONS WITHOUT TOLERANCES ARE FOR REFERENCE ONLY.