

NOTES:

- A. OPERATION: 195° TURN OF DRIVER OR KEY CAUSES PAWL TO ROTATE THEN PULL UP AS SHOWN.
- B. DETERMINE TOTAL GRIP BY ADDING MAX. OUTER DOOR THICKNESS (INCLUDE ALL ACCESSORIES PLUS COMPRESSED GASKETS AND FRAME THICKNESS).
- C. FIND YOUR TOTAL GRIP IN PAWL TABLE TO DETERMINE THE CORRECT PAWL TYPE.
- D. INSTALLATION:
 1. INSERT LATCH INTO THE HOLE OF THE DOOR IN THE UNLATCHED POSITION. CHECK FOR PROPER ORIENTATION AND OPERATION OF PAWL.
 2. INSTALL LOCKWASHER AND MOUNTING NUT (27mm ACROSS FLATS) ONTO HOUSING. RECOMMENDED TIGHTENING TORQUE FOR MOUNTING NUT IS 20 Nm AND THE MOUNTING SCREW IS 10Nm.
- E. THIS STYLE CANNOT ACCOMMODATE MULTI-POINT LATCHING.
- F. FOR GRIP LENGTHS LESS THAN 15mm, SEE DWG. J-E3-10-1.
- G. FOR SEALED APPLICATIONS USE GASKET E5-17 (ORDERED SEPARATELY.)
- H. SEE SHEET 2 FOR DRIVER AND HEAD STYLES.

southco

PROPRIETARY ITEM - EXCEPT FOR USES EXPRESSLY GRANTED IN WRITING INFORMATION DISCLOSED HEREON IS CONFIDENTIAL AND ALL RIGHTS PATENT AND OTHERWISE ARE RESERVED BY SOUTHCO, INC.

WISE-ACTION™ LATCH - INT'L SERIES
FIXED GRIP

DATE	DRAWN	CHKD	SCALE	DRAWING NUMBER
22SEP98	JSS	JGK	1:1	J-E3-10

TOTAL GRIP	MAX. OUTER DOOR THICKNESS (LATCH SHIPPED ASSEMBLED)	PAWL TYPE	TOTAL GRIP	MAX. OUTER DOOR THICKNESS (LATCH SHIPPED ASSEMBLED)	PAWL TYPE
15	UNASSEMBLED LATCH	00	35	7	10
17	MOST USE UNASSEMBLED LATCH	01	37	7	11
19	1	02	39	7	12
21	2	03	41	7	13
23	4	04	43	7	14
25	5	05	45	7	15
27	6	06	47	7	16
29	7	07	49	7	17
31	7	08	51	7	18
33	7	09	53	7	19

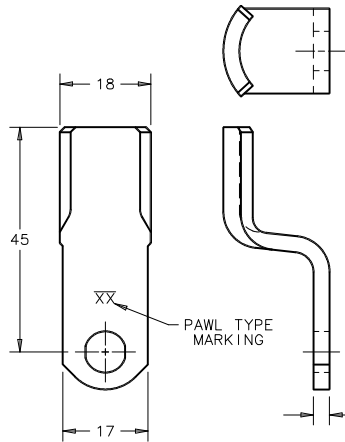
REV	DATE	DRAWN/CHKD	DESCRIPTION
Q	19JAN2015	CMS/MWD	PRN: P2015-0141
P	23FEB2015	CMS/SLT	PRN: P2015-0366
Q	15FEB2018	CMS/MGG	PRN: P2018-0422
R	12FEB2021	CMS/MWD	PRN: P2021-0309
S	06JUL2021	CMS/MWD	PRN: P2021-1340
T	12JUL2021	CMS/MWD	PRN: P2021-1378
U	27AOR2022	CMS/CTG	PRN: P2022-0811
V	29AUG2022	CMS/MGG	PRN: P2022-1519

MILLIMETERS

ALL DIMENSIONS WITHOUT TOLERANCES ARE FOR REFERENCE ONLY.

B PAPER SIZE

COMPONENT	MATERIAL	FINISH
HOUSING	DIE CAST ZINC	SEE FINISH TABLE
CAP	DIE CAST ZINC	SEE FINISH TABLE
RETAINER	302 STAINLESS STEEL	NATURAL
SPRING	302 STAINLESS STEEL	NATURAL
O-RING	BUNA-N	NATURAL
SLEEVE	1075 STEEL	ZINC IMMERSION COATING
CAM	1075 STEEL	ZINC IMMERSION COATING
SHAFT	LOW CARBON STEEL	ZINC PLATE CHROMATE, PLUS SEALER
PIN	1008 STEEL	ZINC PLATE, CHROMATE DIP
PAWL	1010 STEEL	ZINC PLATE CHROMATE, PLUS SEALER
SCREW	LOW CARBON STEEL	ZINC PLATE BRIGHT CHROMATE
LOCKWASHER	SPRING STEEL	ZINC PLATE CHROMATE, PLUS SEALER
MOUNTING NUT	DIE CAST ZINC	ACRYLIC LATEX SEALER
GASKET SEAL	RUBBER	BLACK
TUBULAR KEY	303 STAINLESS STEEL	
STYLE ONLY	BUSHING ALUMINUM	SEE FINISH TABLE



ASSEMBLY PART No.
E3- VV WW - XX Z

MOUNTING STYLE DRIVER PAWL TYPE FINISH

SUBASSEMBLY PART No.
E3- VV WW- 0 Z

MOUNTING STYLE DRIVER FINISH

HARDWARE PACKAGE
E3- VV 0-XX- D

MOUNTING STYLE PAWL TYPE HARDWARE TYPE

MOUNTING STYLE

- 10 - LATCH SHIPPED ASSEMBLED, TYPE A (TURN CLOCKWISE TO LATCH)
- 12 - LATCH SHIPPED UNASSEMBLED, TYPE A (TURN CLOCKWISE TO LATCH)
- 27 - LATCH SHIPPED ASSEMBLED, TYPE B (TURN COUNTERCLOCKWISE TO LATCH)
- 29 - LATCH SHIPPED UNASSEMBLED, TYPE B (TURN COUNTERCLOCKWISE TO LATCH)

FINISH TABLE

- 1 - BRIGHT CHROME PLATE
- 5 - BLACK POWDER COAT
- 7 - SATIN SILVER POLYESTER POWDER COAT

HARDWARE TYPE

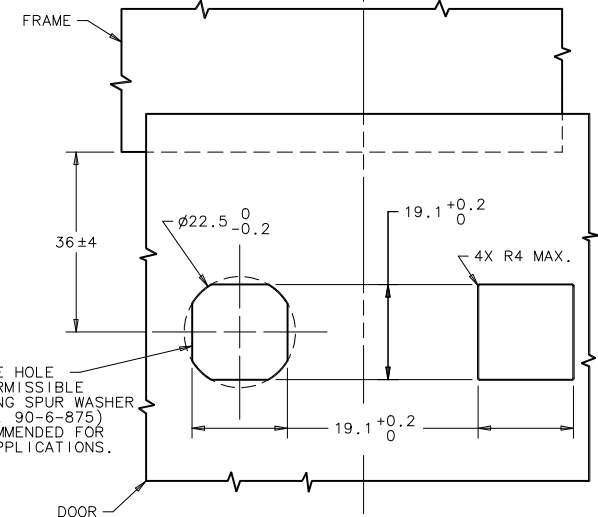
- 7 - WHEN MOUNTING STYLE IS *SHIPPED ASSEMBLED* (VV= 10 OR 27)
- 8 - WHEN MOUNTING STYLE IS *SHIPPED UNASSEMBLED* (VV= 12 OR 29)
- 30- WHEN MOUNTING STYLE IS *SHIPPED UNASSEMBLED* WITH MTG. NUT, LK*WASHER, SCREW ONLY (VV= 12 OR 29)

DOOR PREPARATION

METHOD A

METHOD B

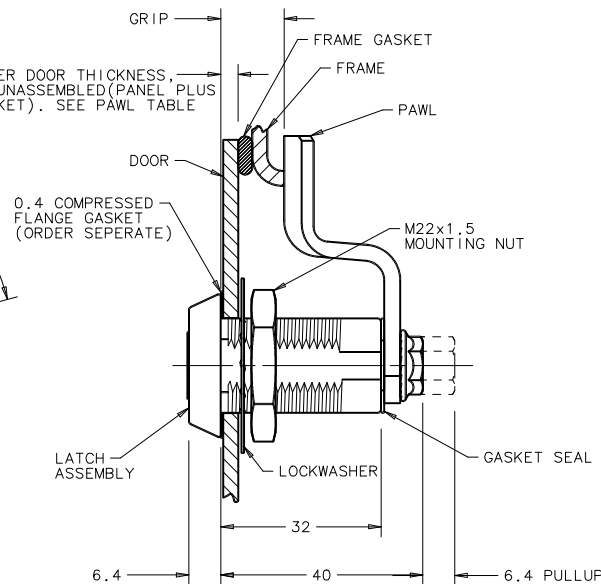
(NOT RECOMMENDED FOR GASKETED APPLICATIONS)



ALTERNATE HOLE SHAPE PERMISSIBLE WHEN USING SPUR WASHER (PART No. 90-6-875) NOT RECOMMENDED FOR SEALED APPLICATIONS.

18 MAX OUTER DOOR THICKNESS, FOR LATCH UNASSEMBLED (PANEL PLUS FLANGE GASKET). SEE PAWL TABLE

0.4 COMPRESSED FLANGE GASKET (ORDER SEPARATE)



southco

PROPRIETARY ITEM - EXCEPT FOR USES EXPRESSLY GRANTED IN WRITING, INFORMATION DISCLOSED HEREON IS CONFIDENTIAL AND ALL RIGHTS, PATENT AND OTHERWISE ARE RESERVED BY SOUTHCO, INC.

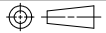
WISE-ACTION™ LATCH - INT'L SERIES
FIXED GRIP

DATE	DRAWN	CHKD	SCALE	DRAWING NUMBER
22SEP98	JSS	JGK	1:1	J-E3-10


REV	DATE	DRAWN/CHKD	DESCRIPTION
Q	19JAN2015	CMS/MWD	PRN: P2015-0141
P	23FEB2015	CMS/LT	PRN: P2015-0366
Q	15FEB2018	CMS/MGG	PRN: P2018-0422
R	12FEB2021	CMS/MWD	PRN: P2021-0309
S	06JUL2021	CMS/MWD	PRN: P2021-1340
T	12JUL2021	CMS/MWD	PRN: P2021-1378
U	26APR2022	CMS/CTG	PRN: P2022-0811
V	29AUG2022	CMS/MGG	PRN: P2022-1519

MILLIMETERS

ALL DIMENSIONS WITHOUT TOLERANCES ARE FOR REFERENCE ONLY.

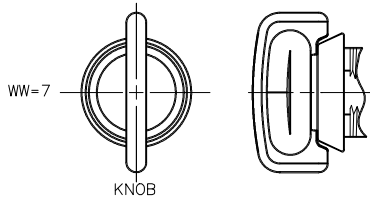
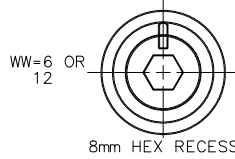
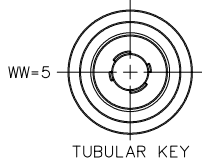
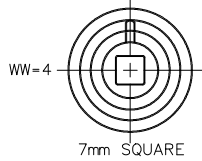
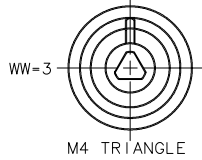
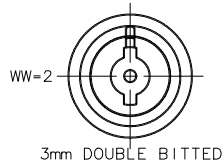


THIRD ANGLE PROJECTION

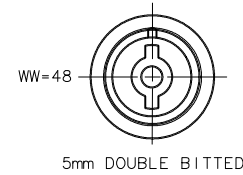
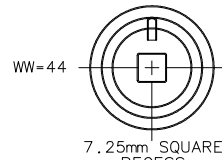
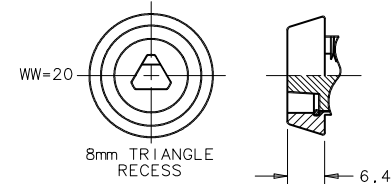
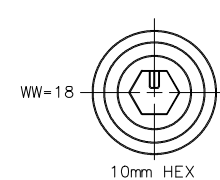
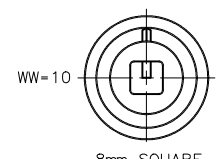
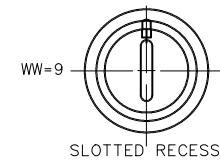
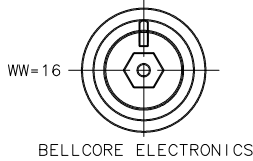
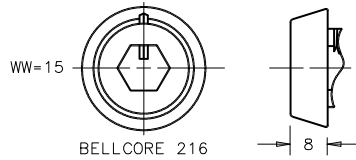
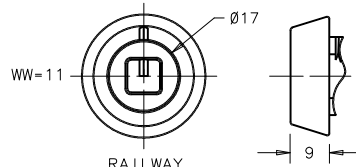


B PAPER SIZE

DRIVER

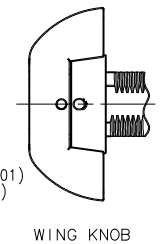
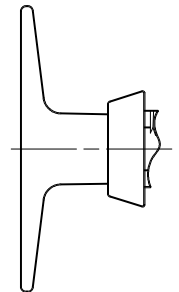


DRIVER



WW=1 - NONLOCKING
WW=8 - LOCKING: CH-751

WW=50 - NON LOCKING
WW=51 - LOCKING (CH751)
WW=57 - LOCKING (14603)
WW=58 - SHUTTERED, REVERSIBLE(RK001)
WW=59 - WITHOUT LOCK PLUG (NOTE F)
(CUSTOMER INSTALLED)



(SEE DRAWINGS J-E3-10-4 AND J-E3-11-2 FOR DETAILS.)