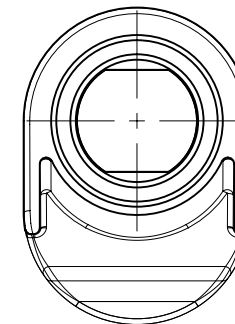
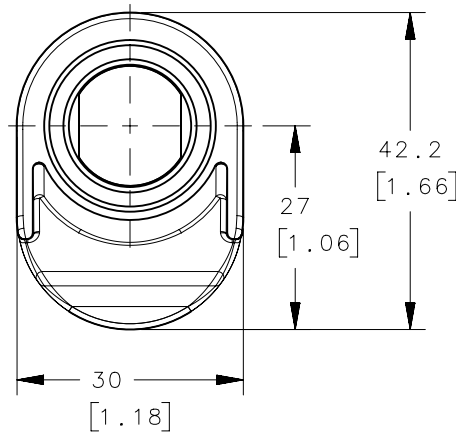
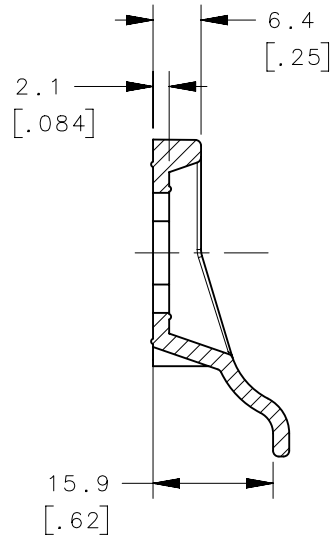
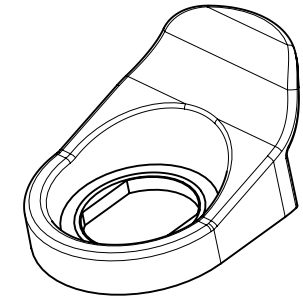


REVISION HISTORY

REV	DATE	BY	DESCRIPTION
C	21OCT2021	RSN/MBT	PRN: P2021-0185

NOTES:

- A. WHEN USING PULL TAB, MINIMUM & MAXIMUM GRIPS OF FASTENERS ARE REDUCED BY 2.1/[.08]
- B. REFER TO 3D MODEL FOR ANY DIMENSIONAL INFORMATION NOT LISTED.



E3-27-61

E3-27-62 SHOWN ABOVE

E3-27-62		PERPENDICULAR		NYLON	BLACK
E3-27-61		IN LINE			
SOUTHCO PART NUMBER		STYLE		MATERIAL	FINISH
CPB NUMBER	STANDARD	THIRD ANGLE PROJECTION	 No. E3 PULL TAB		
		MILLIMETERS [IN]			
SURFACE AREA	3219.58mm ²	TOLERANCES UNLESS OTHERWISE NOTED			
VOLUME	3358.56mm ³	ALL DIMENSIONS WITHOUT TOLERANCES ARE FOR REFERENCE ONLY.			
PROPRIETARY ITEM		PER ASME Y14.5M-1994	SIZE A4	SYSTEM NX	DWG NO. J-E3-27-61
EXCEPT FOR USES EXPRESSLY GRANTED IN WRITING, INFORMATION DISCLOSED HEREON IS CONFIDENTIAL AND ALL RIGHTS, PATENT AND OTHERWISE, ARE RESERVED BY SOUTHCO, INC.			DRAWN BY PEK	DATE 16AUG1990	SCALE 1:1 SHEET 1 OF 1