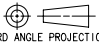

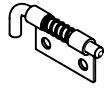
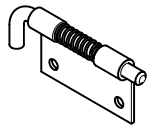
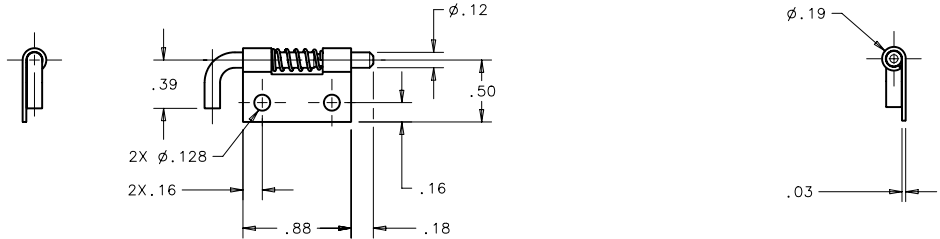


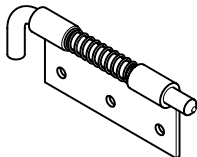
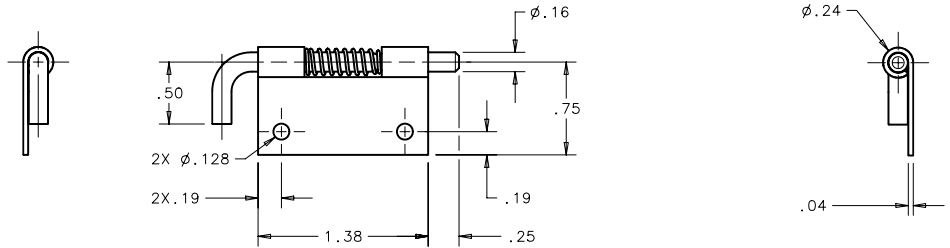
southco				PROPRIETARY ITEM - EXCEPT FOR USES EXPRESSLY GRANTED IN WRITING INFORMATION DISCLOSED HEREON IS CONFIDENTIAL AND ALL RIGHTS PATENT AND OTHERWISE ARE RESERVED BY SOUTHCO, INC.				F6 PULL-PIN RELEASE HINGE			DATE	DRAWN	CHKD	SCALE	DRAWING NUMBER
											17MAR2005	MJS	JF	1:1	J-F6-23
REV	DATE	DRAWN/CHKD	DESCRIPTION	ASSEMBLY PART NUMBER		MATERIAL	FINISH	INCHES							
				LEFT	RIGHT			ALL DIMENSIONS WITHOUT TOLERANCES ARE FOR REFERENCE ONLY.							
				F6-23-N3AW	F6-23-N4AW	STEEL	ZINC PLATE, BRIGHT CHROMATE	 THIRD ANGLE PROJECTION  PAPER SIZE B							
				F6-23-S3AW	F6-23-S4AW	300 SERIES STAINLESS STEEL	PASSIVATED								
				F6-23-N7AW	F6-23-N8AW	STEEL	ZINC PLATE, BRIGHT CHROMATE								
				F6-23-S7AW	F6-23-S8AW	300 SERIES STAINLESS STEEL	PASSIVATED								
				F6-23-N11AW	F6-23-N12AW	STEEL	ZINC PLATE, BRIGHT CHROMATE								
				F6-23-S11AW	F6-23-S12AW	300 SERIES STAINLESS STEEL	PASSIVATED								
				F6-23-N15AW	F6-23-N16AW	STEEL	ZINC PLATE, BRIGHT CHROMATE								
				F6-23-S15AW	F6-23-S16AW	300 SERIES STAINLESS STEEL	PASSIVATED								



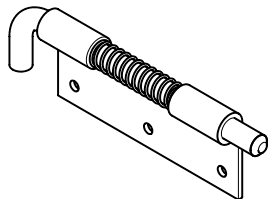
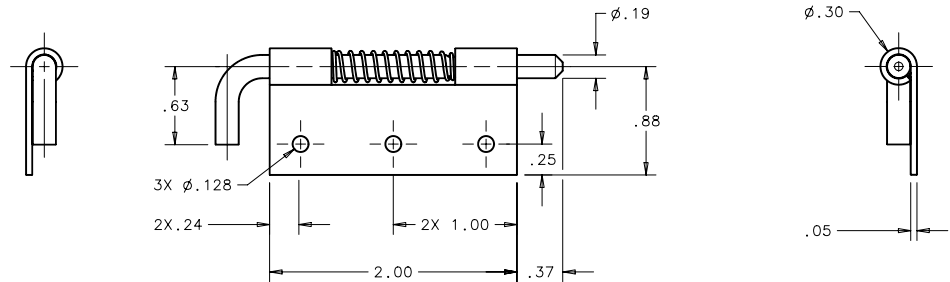
.75:1 SCALE
PART NUMBER F6-23-N4AW SHOWN.
PART NUMBER F6-23-N3AW IS
A MIRROR IMAGE.



.75:1 SCALE
PART NUMBER F6-23-N8AW SHOWN.
PART NUMBER F6-23-N7AW IS
A MIRROR IMAGE.



.75:1 SCALE
PART NUMBER F6-23-N12AW SHOWN.
PART NUMBER F6-23-N11AW IS
A MIRROR IMAGE.



.75:1 SCALE
PART NUMBER F6-23-N16AW SHOWN.
PART NUMBER F6-23-N15AW IS
A MIRROR IMAGE.

