

southco

PROPRIETARY ITEM - EXCEPT FOR USES EXPRESSLY GRANTED IN WRITING INFORMATION DISCLOSED HEREON IS CONFIDENTIAL AND ALL RIGHTS PATENT AND OTHERWISE ARE RESERVED BY SOUTHCO, INC.

LIFT AND TURN COMPRESSION LATCH LOCKING

DATE	DRAWN	CHKD	SCALE	DRAWING NUMBER
05JUL2007	MJS	JA	3:4	J-N2-2-301

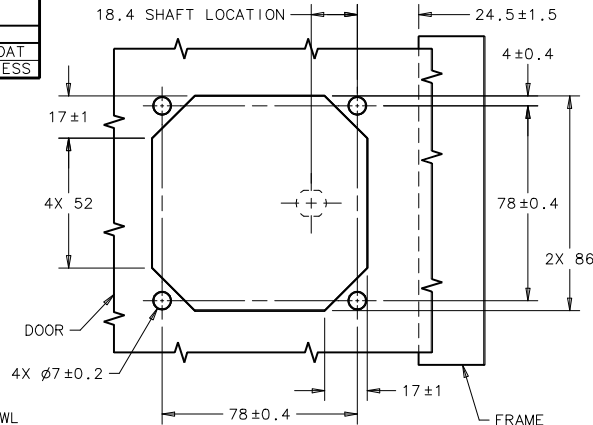
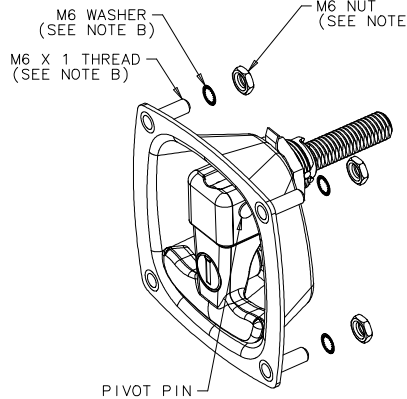
REV	DATE	DRAWN/CHKD	DESCRIPTION	ITEM	PART NUMBER	MATERIAL	FINISH
A	29OCT2008	JSS	PRN:P2008-1172	ASSEMBLY (STEEL)	N2-2-301-01-XX	- - -	SEE FINISH TABLE
B	13APR2009	ACH/MJS	PRN:P2009-0429	HANDLE		ALUMINUM	SEE FINISH TABLE
C	28OCT2010	RMD/LBT	PRN:P2010-0818	CUP/STUD ASSEMBLY		SEE NOTE B	SEE FINISH TABLE
D	12NOV2013	CMS/LW	PRN:P2013-2248	LOCK PLATE		STAINLESS STEEL	SEE FINISH TABLE
E	28MAY2014	CMS/BGL	PRN:P2014-1016	SLEEVE		STAINLESS STEEL	PASSIVATED
F	04MAY2018	CMS/MWD	PRN:P2018-1101	SLEEVE NUT		STAINLESS STEEL	PASSIVATED
G	02JUN2020	CMS/CLB	PRN:P2020-1042	TAB WASHER		STAINLESS STEEL	PASSIVATED
				SHAFT		STAINLESS STEEL	PASSIVATED
				RIVET PIN		STAINLESS STEEL	PASSIVATED
				SPRING		STAINLESS STEEL	PASSIVATED
				BRASS WEAR WASHER		BRASS	NATURAL
				STOP PIN		STAINLESS STEEL	PASSIVATED
				LOCKPLUG/CLIP		SEE NOTE A	SEE NOTE A
				M12 HEX NUT (2)		STEEL	ZINC ALLOY PLATE BRIGHT CHROMATE
				M6 HEX NUT (4)		STEEL	ZINC ALLOY PLATE BRIGHT CHROMATE
				M12 LOCKWASHER (2)		STAINLESS STEEL	PASSIVATED
				M6 LOCKWASHER (4)		SPRING STEEL	ZINC ALLOY PLATE BRIGHT CHROMATE
				LUBRICANT		SEE NOTE D	BLACK
				KEYS, CH751 (2)		BRASS	NICKEL PLATED
				M12 PAWL WASHER (2)		STAINLESS STEEL	PASSIVATED

AVAILABLE GRIP RANGES STANDARD PAWLS (SOLD SEPARATELY)

PART NUMBER	GRIP RANGE	PAWL TYPE
N2-21-101-YY	28 - 43	DEEP OFFSET
N2-21-102-YY	43 - 58	OFFSET
N2-21-103-YY	58 - 73	FLAT
N2-21-102-YY	73 - 88	OFFSET
N2-21-101-YY	88 - 104	DEEP OFFSET

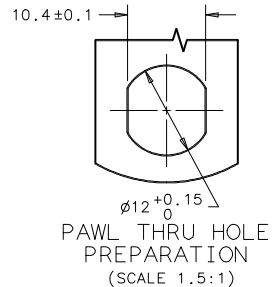
MATERIAL	
-YY	MATERIAL
-12	STEEL
-24	STAINLESS STEEL

FINISH TABLE	
-XX	FINISH
-5	BLACK POWDER COAT
-20	POLISHED STAINLESS

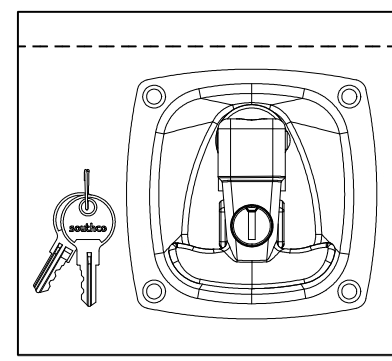
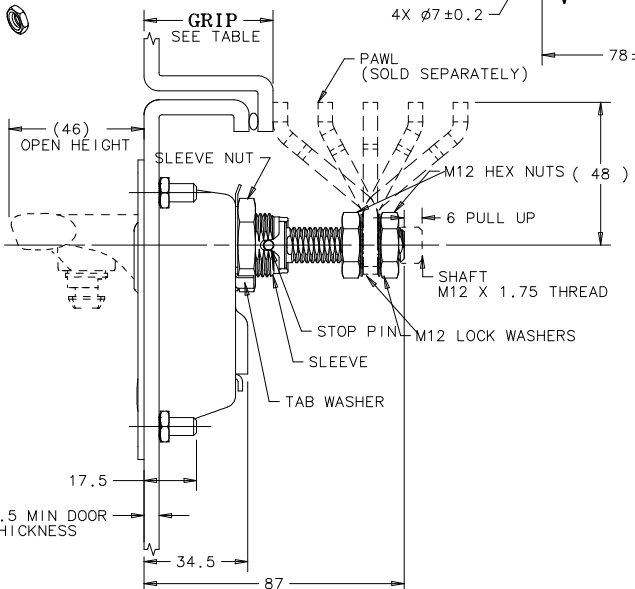
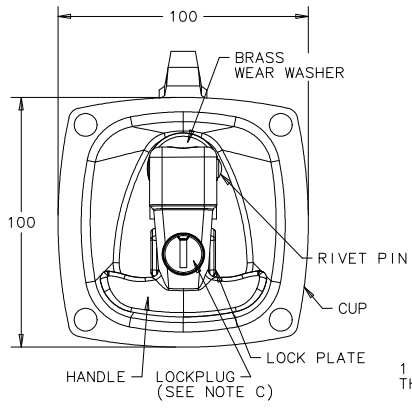


PANEL PREPARATION

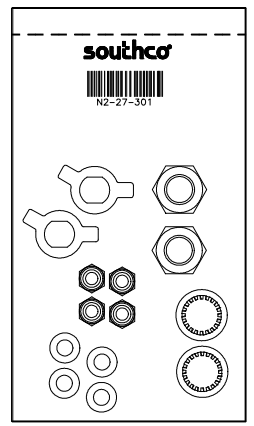
- NOTES:
- A. LOCKPLUG MATERIAL AND FINISH: LOCKPLUG: DIE CAST ZINC, CHROMATE FINISH. SCALP AND DUST SHUTTER: STAINLESS STEEL
- B. CUP/STUD ASSEMBLY MATERIAL: CUP: STEEL. STUD: STAINLESS STEEL
- C. LOCK TO FUNCTION WITH KEY CODE CH751.
- D. LUBRICANT MATERIAL: OIL BASED GREASE WITH MOLYBDENUM DISULFIDE ADDITIVES.
- E. INSTALLATION:
 1. PLACE LATCH IN PANEL AND USE (4) M6 X 1 NUTS AND (4) M6 LOCKWASHERS AND INSTALL TO A MAXIMUM RECOMMENDED TIGHTENING TORQUE OF 7.2 Nm TO THE PAWL.
 2A. IF USING M12 PAWL WASHERS INSTEAD OF M12 LOCKWASHERS; AFTER PAWL IS ADJUSTED, BEND TABS OF M12 PAWL WASHERS OVER M12 LOCK NUTS.
- F. PACKAGING:
 LATCH AND HARDWARE PACK IS PACKAGED IN PLASTIC BAG, PACKED TOGETHER IN SMALL CARDBOARD BOX. 18 ASSEMBLIES PER CARDBOARD CONTAINER. WHEN ORDERING, SPECIFY QTY. IN MULTIPLES OF 18.



PAWL THRU HOLE PREPARATION (SCALE 1.5:1)



PACKAGING



MILLIMETERS
 ALL DIMENSIONS WITHOUT TOLERANCES ARE FOR REFERENCE ONLY.
 THIRD ANGLE PROJECTION
 A3 PAPER SIZE

southco

PROPRIETARY ITEM - EXCEPT FOR USES EXPRESSLY GRANTED IN WRITING INFORMATION DISCLOSED HEREON IS CONFIDENTIAL AND ALL RIGHTS PATENT AND OTHERWISE ARE RESERVED BY SOUTHCO, INC.

LIFT AND TURN COMPRESSION LATCH LOCKING

DATE	DRAWN	CHKD	SCALE	DRAWING NUMBER
05JUL2007	MJS	JA	3:4	J-N2-2-301

REV	DATE	DRAWN/CHKD	DESCRIPTION	ITEM	PART NUMBER	MATERIAL	FINISH
A	29OCT2008	JSS	PRN:P2008-1172	ASSEMBLY (SS)	N2-2-301-01-XX	-	SEE FINISH TABLE
B	13APR2009	ACH/MJS	PRN:P2009-0429	HANDLE		STAINLESS STEEL	SEE FINISH TABLE
C	28OCT2010	RMD/LBT	PRN:P2010-0818	CUP/STUD ASSEMBLY			SEE NOTE A
D	12NOV2013	CMS/LW	PRN:P2013-2248	LOCK PLATE		STAINLESS STEEL	SEE FINISH TABLE
E	28MAY2014	CMS/BGL	PRN:P2014-1016	SLEEVE		STAINLESS STEEL	PASSIVATED
F	04MAY2018	CMS/MWD	PRN:P2018-1101	SLEEVE NUT		STAINLESS STEEL	PASSIVATED
G	02JUN2020	CMS/CLB	PRN:P2020-1042	TAB WASHER		STAINLESS STEEL	PASSIVATED
				SHAFT		STAINLESS STEEL	PASSIVATED
				RIVET PIN		STAINLESS STEEL	PASSIVATED
				SPRING		STAINLESS STEEL	PASSIVATED
				BRASS WEAR WASHER		BRASS	NATURAL
				STOP PIN		STAINLESS STEEL	PASSIVATED
				LOCKPLUG/CLIP		STAINLESS STEEL	PASSIVATED
				M12 HEX NUT (2)		STAINLESS STEEL	PASSIVATED
				M6 HEX NUT (4)		STAINLESS STEEL	PASSIVATED
				M12 LOCKWASHER (2)		STAINLESS STEEL	PASSIVATED
				M6 LOCKWASHER (4)		STAINLESS STEEL	PASSIVATED
				LUBRICANT KEYS, CH751 (2)		SEE NOTE C	BLACK NICKEL PLATED
				M12 PAWL WASHER (2)		STAINLESS STEEL	PASSIVATED

AVAILABLE GRIP RANGES STANDARD PAWLS (SOLD SEPARATELY)

PART NUMBER	GRIP RANGE	PAWL TYPE
N2-21-101-YY	28 - 43	DEEP OFFSET
N2-21-102-YY	43 - 58	OFFSET
N2-21-103-YY	58 - 73	FLAT
N2-21-102-YY	73 - 88	OFFSET
N2-21-101-YY	88 - 104	DEEP OFFSET

MATERIAL	
-YY	MATERIAL
-12	STEEL
-24	STAINLESS STEEL

FINISH TABLE	
-XX	FINISH
-5	BLACK POWDER COAT
-20	POLISHED STAINLESS

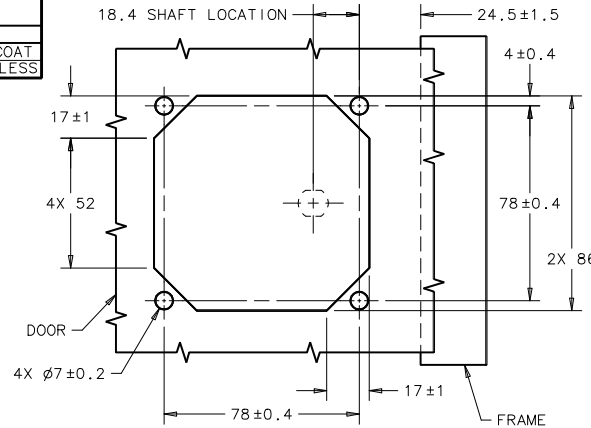
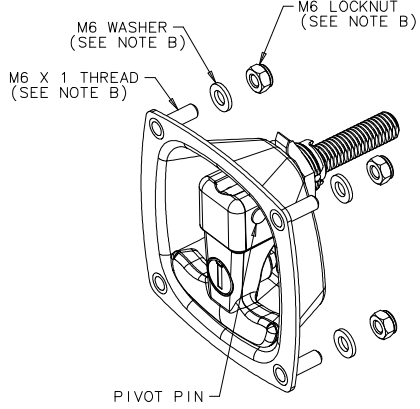
MILLIMETERS

ALL DIMENSIONS WITHOUT TOLERANCES ARE FOR REFERENCE ONLY.

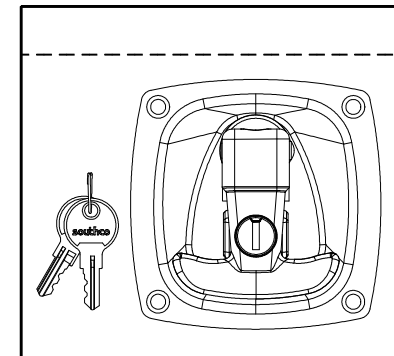
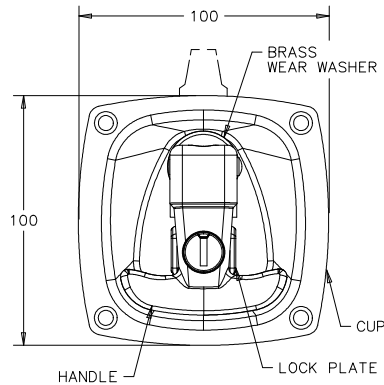
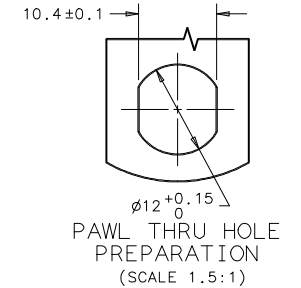
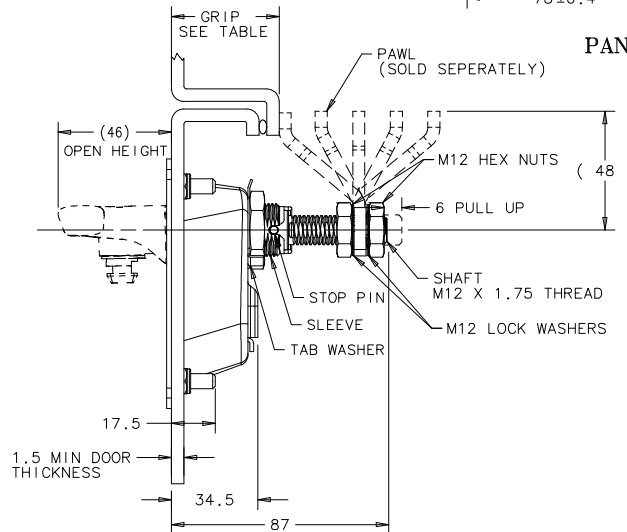
THIRD ANGLE PROJECTION

A3 PAPER SIZE

- NOTES: PAGE 2 OF 2
- LOCKPLUG MATERIAL AND FINISH: LOCKPLUG: DIE CAST ZINC, CHROMATE FINISH
SCALP AND DUST SHUTTER: STAINLESS STEEL
 - CUP/STUD ASSEMBLY MATERIAL: CUP: STAINLESS STEEL
STUD: STAINLESS STEEL
 - LOCK TO FUNCTION WITH KEY CODE CH751.
 - LUBRICANT MATERIAL: OIL BASED GREASE WITH MOLYBDENUM DISULFIDE ADDITIVES.
 - INSTALLATION:
 - PLACE LATCH IN PANEL AND USE (4) M6 X 1 NUTS AND (4) M6 LOCKWASHERS AND INSTALL TO A MAXIMUM RECOMMENDED TIGHTENING TORQUE OF 7.2 Nm.
 - FINAL INSTALLATION WILL REQUIRE PROPER ADJUSTMENT TO THE PAWL (M12 LOCKNUT TIGHTENING TORQUE: 20-25Nm)
 - IF USING M12 PAWL WASHERS INSTEAD OF M12 LOCKWASHERS; AFTER PAWL IS ADJUSTED, BEND TABS OF M12 PAWL WASHERS OVER M12 LOCK NUTS.
 - PACKAGING: LATCH AND HARDWARE PACK IS PACKAGED IN PLASTIC BAG, PACKED TOGETHER IN SMALL CARDBOARD BOX. 18 ASSEMBLIES PER CARDBOARD CONTAINER. WHEN ORDERING, SPECIFY QTY. IN MULTIPLES OF 18.



PANEL PREPARATION



PACKAGING (SEE NOTE F)

