



SOUTHCO No. 64 FLUSH PADDLE LATCH
BRUSHED S/S

DATE: 7/14/86
DRAWN: H.A.G.
CHKD:
SCALE: N.T.S.

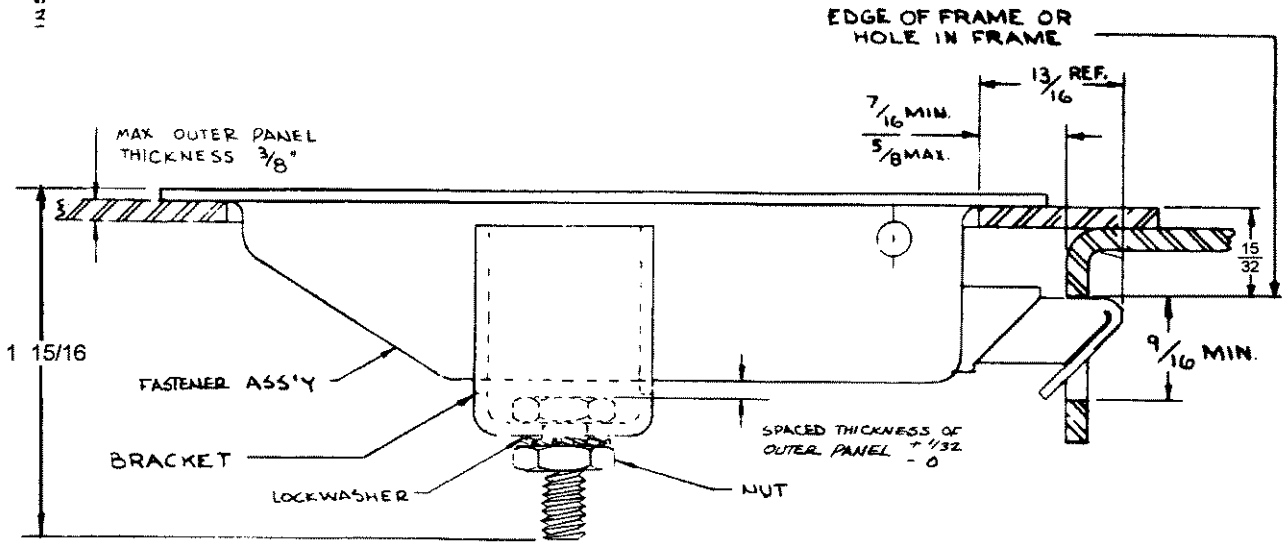
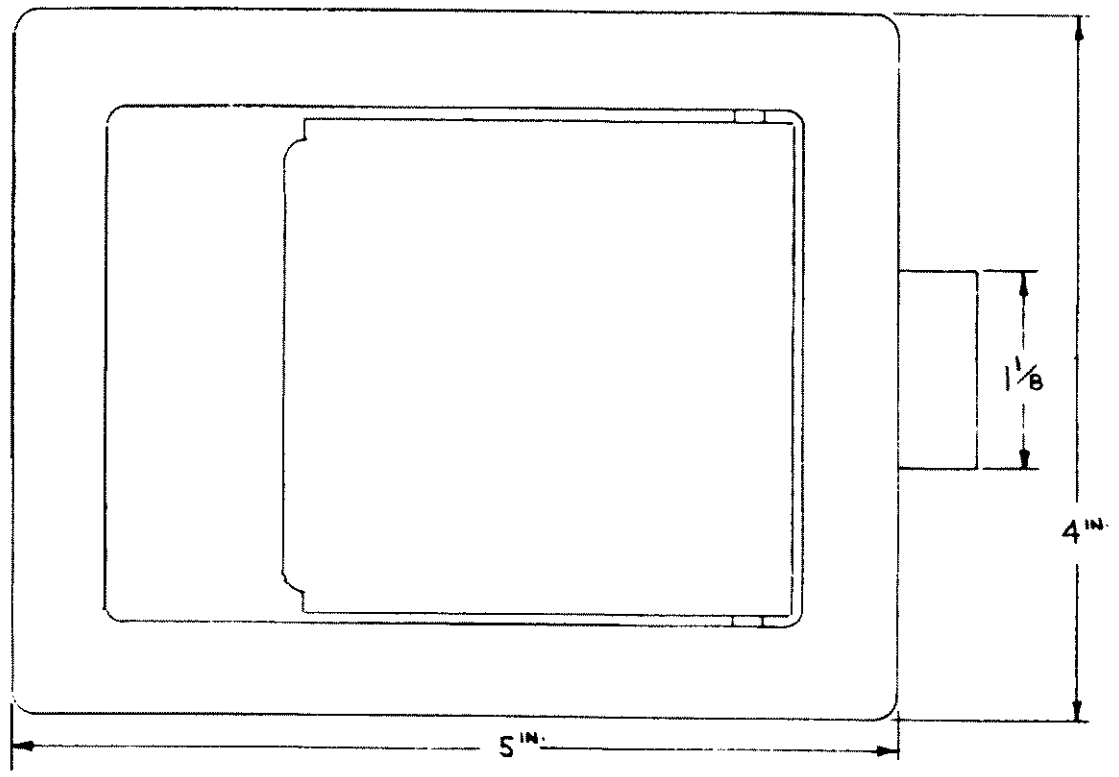
DRAWING NUMBER
J-64-10-301-50

R.S.	DATE	APP
A		
B		
C		
D		

ITEM	COMPONENT	PART N ^o	MATERIAL	FINISH
ASSEMBLY		64-10-301-50		
	CUP SUB ASSY		SEE NOTE 'A'	SEE NOTE 'A'
	PADDLE		304 STAINLESS STEEL	BRUSHED, PASSIVATED
	PIN		430 "	PASSIVATED
	SLIDE		304 "	"
	SPRING		302 "	"
	BRACKET		304 "	"
	NUT		18-8 "	"
	LOCKWASHER		410 "	"

NOTE 'A' ~ CUP - 304 STAINLESS STEEL, BRUSHED, PASSIVATED
GUIDE - 304 " " " " " " " " " " " "
STUD - 18-9LW " " " " " " " " " " " "

INSTALLATION - PREPARE A RECTANGULAR HOLE $3\frac{1}{2} \times 4\frac{1}{2}$ (1/8 MAX CORNER RADIUS)
ADJUST FIRST NUT, AS SHOWN, FOR THICKNESS OF OUTER PANEL.
PLACE LATCH IN HOLE, THEN PLACE BRACKET OVER STUD AS SHOWN
AND SECURE WITH LOCKWASHER AND NUT



DRAWING NUMBER: J-64-10-301-50
REV. A - 5 MAR 83 - J.C. - PRN: S-1-03
PROPRIETARY ITEM - EXCEPT FOR USES EXPRESSLY GRANTED IN WRITING, INFORMATION DISCLOSED HEREON IS CONFIDENTIAL AND ALL RIGHTS, PATENT AND OTHERWISE, ARE RESERVED BY SOUTHCO, INC.