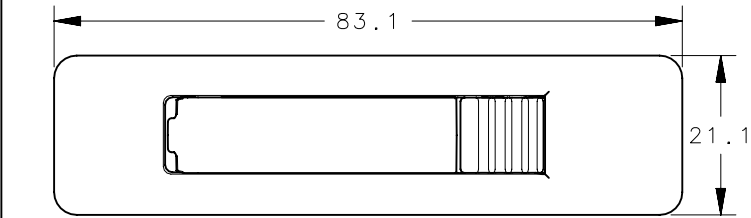


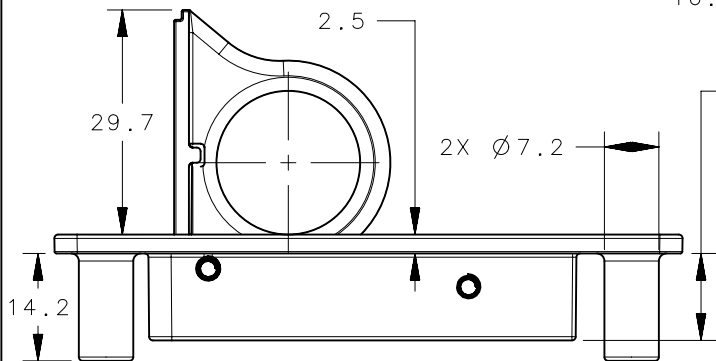
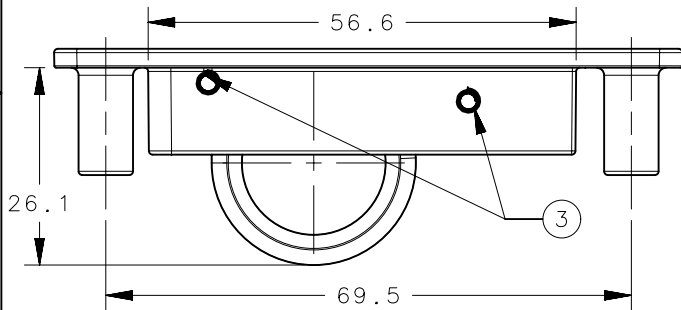
NOTES:

1. ALL COMPONENTS ARE RoHS COMPLIANT.
2. COSMETIC SPECIFICATIONS:
TOP SURFACE OF HOUSING, TOP SURFACE OF LEVER AND ALL SURFACE'S OF PULL RING ARE TO CONFORM TO CLASS B, ALL OTHER SURFACES ARE TO CONFORM TO A CLASS D AS DESCRIBED IN SOUTHCO COSMETIC SPECIFICATION S-121.
3. MAXIMUM TORQUE ON MOUNTING SCREWS: 2.5 N-m.

REVISION HISTORY			
REV	DATE	BY	DESCRIPTION
C	31JUL2017	JDB/CMS	PRN: P2017-1894

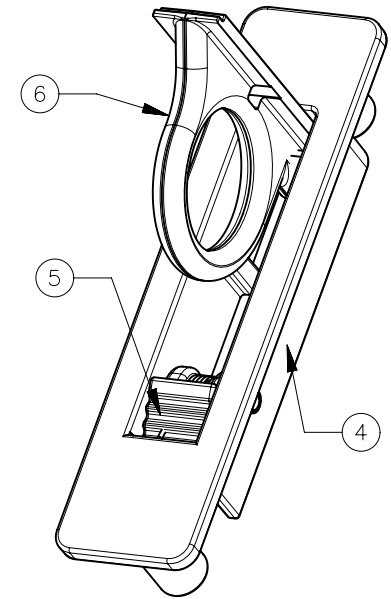
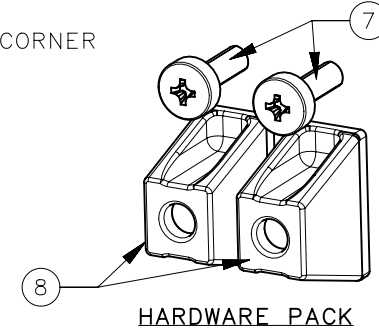
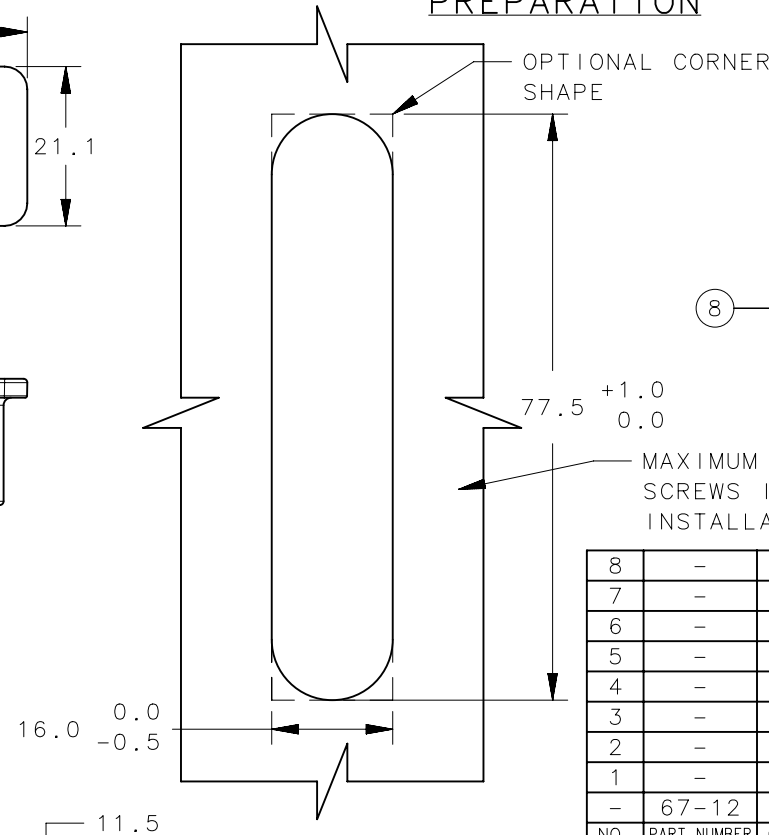


LATCH CLOSED



LATCH OPEN

PANEL PREPARATION



MAXIMUM RECOMMENDED PANEL THICKNESS WITH SUPPLIED SCREWS IS 6.4mm. LONGER SCREWS WILL BE NEEDED FOR INSTALLATION INTO THICKER PANELS.

8	-	2	#67 WIDE PUSHING	POM HOMOPOLYMER	BLACK
7	-	2	M4x0.7x16 SELF TAPPING SCREW	STAINLESS	PASSIVATED
6	-	1	PULL RING	ZAMAC 3	BLACK POWDERCOATING
5	-	1	LEVER	ZAMAC 3	BLACK POWDERCOATING
4	-	1	HOUSING	ZAMAC 3	BLACK POWDERCOATING
3	-	2	COILED PINS	STAINLESS	PASSIVATED
2	-	1	LEVER TORSION SPRING	STAINLESS	PASSIVATED
1	-	1	PULL RING TORSION SPRING	STAINLESS	PASSIVATED
-	67-12	-	PULL RING LATCH ASSY	-	-
NO.	PART NUMBER	QTY	TYPE OF COMPONENT	MATERIAL	FINISH

THIRD ANGLE PROJECTION	
MILLIMETERS [IN]	
TOLERANCES UNLESS OTHERWISE NOTED	
ALL DIMENSIONS WITHOUT TOLERANCES ARE FOR REFERENCE ONLY.	
PROPRIETARY ITEM	
EXCEPT FOR USES EXPRESSLY GRANTED IN WRITING, INFORMATION DISCLOSED HEREON IS CONFIDENTIAL AND ALL RIGHTS, PATENT AND OTHERWISE, ARE RESERVED BY SOUTHCO, INC.	
PER ASME Y14.5M-1994	

southco [®]			
CONNECT • CREATE • INNOVATE			
DESCRIPTION PULL RING LATCH, STANDARD			
SIZE A4	SYSTEM NX	DWG NO. J-67-12	
DRAWN BY RL/LC	DATE 27OCT2014	SCALE 1:1	SHEET 1 OF 1