

**southco**<sup>®</sup>

PROPRIETARY ITEM - EXCEPT FOR USES EXPRESSLY GRANTED IN WRITING INFORMATION DISCLOSED HEREON IS CONFIDENTIAL AND ALL RIGHTS PATENT AND OTHERWISE ARE RESERVED BY SOUTHCO, INC.

NO. 68 BAIL HEAD ASSEMBLY

DATE	DRAWN	CHKD	SCALE	DRAWING NUMBER
12-10-80	ACZ		1:2	J-68-80-302-20

REV	DATE	DRAWN/CHKD	DESCRIPTION	ITEM	PART NUMBER	MATERIAL	FINISH
G	22JAN1993	JGK	PRN: 68-79	ASSEMBLY	68-80-302-20	SEE NOTE "A"	SEE NOTE "A"
H	5MAR1993	VTB	PRN: S-1-03				
I	22APR2005	BRP/RLR	PRN: P2005-0594				
J	27SEP2012	CMS/CDW	PRN: P2012-1299				

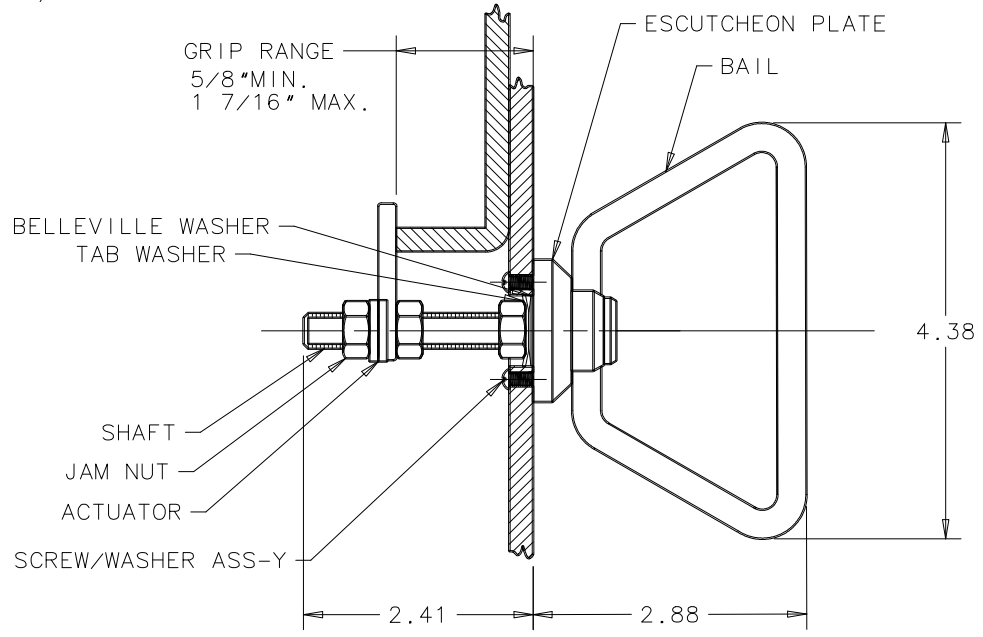
**INCHES**

ALL DIMENSIONS WITHOUT TOLERANCES ARE FOR REFERENCE ONLY.

THIRD ANGLE PROJECTION

A PAPER SIZE

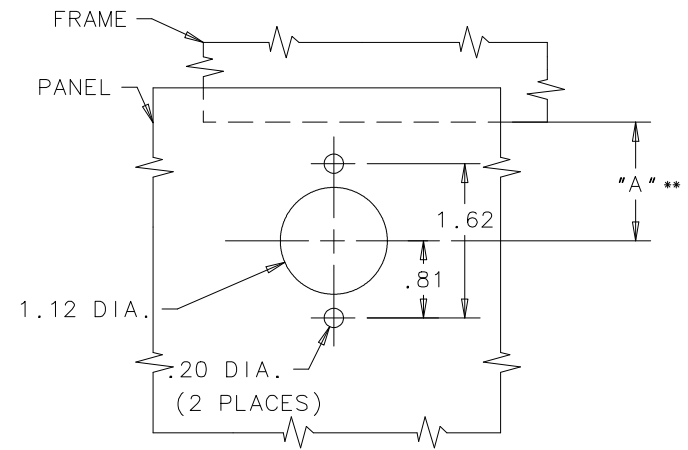
NOTE:  
 A. BAIL & SHAFT: STEEL, CHROME PLATE  
 ESCUTCHEON PLATE & STOP WASHER:  
 DIE CAST ZINC, CHROME PLATE  
 NUT, BELLEVILLE WASHER, BASE PLATE, TAB WASHER,  
 PAWL, JAM NUTS, ACTUATOR, & SCREWS/WASHER ASSEMBLY:  
 STEEL, ZINC FLAKE COATING



**INSTALLATION INSTRUCTIONS**

INSERT SHAFT THROUGH CENTER HOLE IN PANEL AND ALIGN MOUNTING HOLES IN ESCUTCHEON WITH HOLES IN PANEL. SECURE ASSEMBLY USING TWO N#10-32 SCREW/WASHER ASSEMBLIES SUPPLIED. RUN ONE JAM NUT ONTO SHAFT, ORIENT PAWL AND SLIDE ONTO SHAFT, ORIENT ACTUATOR SO THAT SHAPED RECESS FITS OVER PAWL AND FOLLOW WITH SECOND JAM NUT. POSITION NUTS, PAWL, AND ACTUATOR TO YOUR DESIRED GRIP AND TIGHTEN NUTS HARD AGAINST PAWL AND ACTUATOR USING TWO WRENCHES. CHECK FOR PROPER LATCH OPERATION.

\*TYPE "B" ASSEMBLIES TURN COUNTERCLOCKWISE TO LATCH.  
 TYPE "A" ASSEMBLIES TURN CLOCKWISE TO LATCH



**PANEL PREPARATION**

PANEL PREPARATION SHOWN ABOVE (THREE HOLE- CENTERLINES PERPENDICULAR TO FRAME EDGE) IS FOR TYPE "B" \* FASTENER OPERATION. FOR TYPE "A" \* OPERATION OF FASTENER, HOLE CENTERLINES SHOULD BE MADE PARALLEL TO FRAME EDGE.

\*\*"A" EDGE OF FRAME TO 1.125 DIA. HOLE CENTERLINE FOR STRAIGHT PAWL 1.125"MIN.-2.25"MAX.