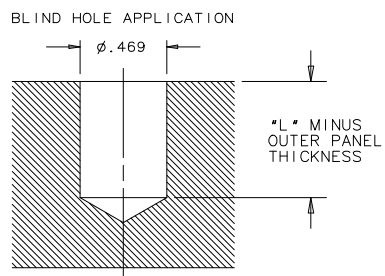
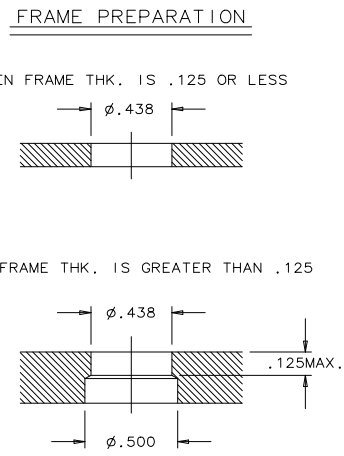
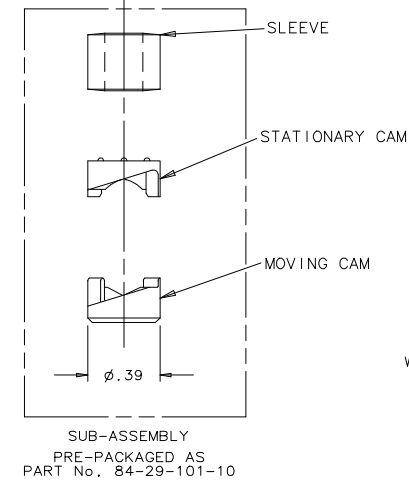
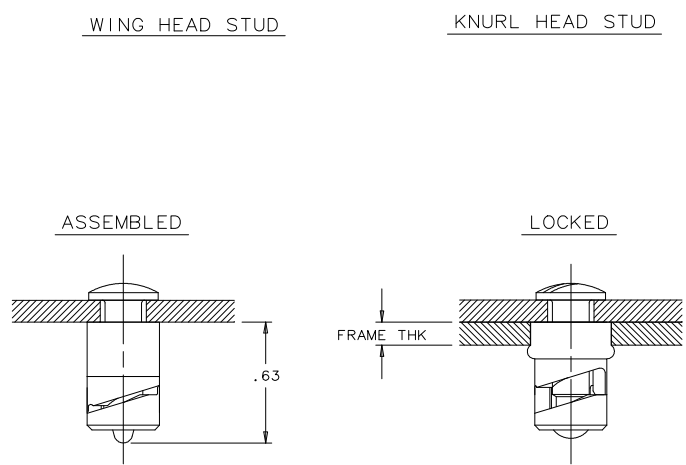
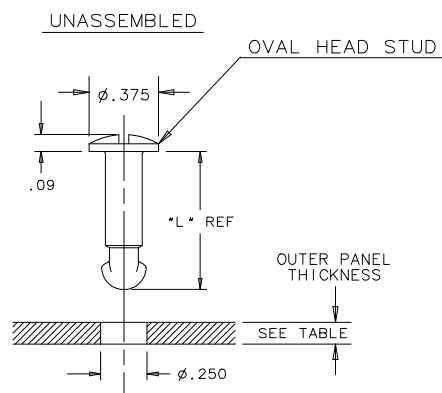
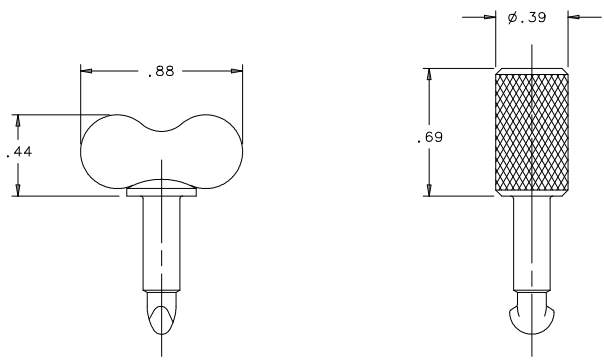


REV.	DATE	BY-CHKD	REVISIONS	OUTER PANEL THICKNESS	"L" REF.	OVAL HEAD ASS'Y PART NUMBER	WING HEAD ASS'Y PART NUMBER	KNURL HEAD ASS'Y PART NUMBER
A	4MAY92	JGK	PRN: 84-32	.030-.049	.66	84-20-040-10	84-20-040-20	84-20-040-30
B	04MAY93	ALC	PRN: S-1-03	.050-.069	.68	84-20-060-10	84-20-060-20	84-20-060-30
C	21JUL93	PKE	PRN: S-99-1-N-1	.070-.089	.70	84-20-080-10	84-20-080-20	84-20-080-30
D	10MAR97	JCK	PRN: 84-40	.090-.109	.72	84-20-100-10	84-20-100-20	84-20-100-30
E	03APR2014	CMS/JCG	PRN: P2014-0664	.110-.129	.74	84-20-120-10	84-20-120-20	84-20-120-30
F	31MAY2016	JPK/CMS	PRN: P2016-0963	.130-.149	.76	84-20-140-10	84-20-140-20	84-20-140-30
				.150-.169	.78	84-20-160-10	84-20-160-20	84-20-160-30
				.170-.189	.80	84-20-180-10	84-20-180-20	84-20-180-30
				.190-.209	.82	84-20-200-10	84-20-200-20	84-20-200-30

NOTES:

- A. AN ASSEMBLY CONSISTS OF A STUD, SLEEVE, STATIONARY CAM AND MOVING CAM.
- B. TO ASSEMBLY-ARRANGE STUD, OUTER PANEL, SLEEVE, STATIONARY CAM AND MOVING CAM AS SHOWN, BRING COMPONENTS TOGETHER TIGHTLY ON CHAMFER OF THE MOVING CAM. TWIST STUD QUARTER TURN CLOCKWISE TO LOCK IT INTO MOVING CAM SEAT.

.150-.169	.78	84-20-160-10	84-20-160-20	84-20-160-30
.170-.189	.80	84-20-180-10	84-20-180-20	84-20-180-30
.190-.209	.82	84-20-200-10	84-20-200-20	84-20-200-30



**MATERIAL AND FINISH**  
 WING AND SLOTTED HEAD STUDS: 1008 STEEL  
 KNURLED HEAD: 12L14 STEEL  
 ALL STUDS ARE ZINC ALLOY PLATE, BRIGHT CHROMATE PLUS SEALER.  
 SLEEVE: RUBBER IR/BR BLEND, BLACK  
 STATIONARY CAM: ACETAL, BLACK  
 MOVING CAM: DIE CAST ZINC, BLACK ORGANIC COATING.