

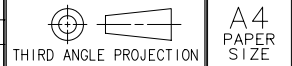
**southco®**

PROPRIETARY ITEM - EXCEPT FOR USES EXPRESSLY GRANTED IN WRITING INFORMATION DISCLOSED HEREON IS CONFIDENTIAL AND ALL RIGHTS PATENT AND OTHERWISE ARE RESERVED BY SOUTHCO, INC.

No. E5 LATCH  
PUSH TO CLOSE STYLE

DATE	DRAWN	CHKD	SCALE	DRAWING NUMBER
06MAR2008	ACH	MJS	1:1	TD-E5-51-J

REV	DATE	DRAWN/CHKD	DESCRIPTION								
A	03MAY2012	TVA/MJS	PRN: P2012-0617								

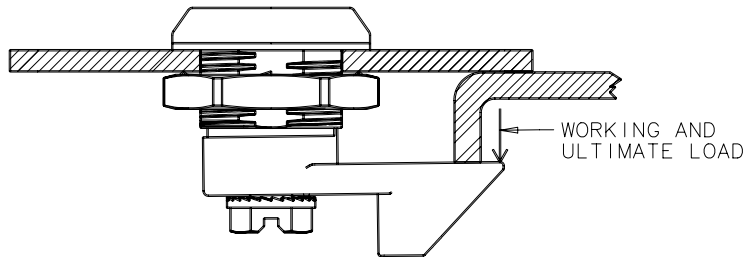


**SOUTHCO PERFORMANCE GUIDELINES**

THE PERFORMANCE GUIDELINES SHOWN ON THIS PAGE ARE SUPPLIED AS A GENERAL GUIDE ONLY, AS CONDITIONS VARY WITH EACH APPLICATION AND METHOD OF INSTALLATION. STRENGTH DATA GIVEN IS FOR FAILURE OF THE PRODUCT OR FOR SUFFICIENT DEFORMATION TO MAKE PRODUCT INOPERABLE. NO SAFETY FACTOR HAS BEEN APPLIED IT IS RECOMMENDED THAT THE USER REQUEST A PRODUCT SAMPLE FOR TESTING TO DETERMINE THE SUITABILITY OF THE PRODUCT FOR THE PURPOSE INTENDED AND USER'S PARTICULAR APPLICATION.

<b>TEST DESCRIPTION</b>	E5-T-WWX-510-RK 52
① MAXIMUM RECOMMENDED STATIC WORKING LOAD	500 N
② AVERAGE ULTIMATE LOAD	800 N
③ CYCLE LIFE	1000 AT 22 N SIMULATED GASKET LOAD

SHOWN:  
E5-6-052-510



REF: TR E5-7031

- ① STATIC WORKING LOAD IS THE MAXIMUM RECOMMENDED LOAD AFTER ONE TIME APPLICATION AND REMOVAL OF WHICH THE PRODUCT CONTINUES TO FUNCTION PROPERLY.
- ② AVERAGE ULTIMATE LOAD CAUSES FAILURE OF THE PRODUCT OR SUFFICIENT DEFORMATION TO MAKE THE PRODUCT INOPERABLE.
- ③ CYCLE CONSISTS OF ONE PUSH TO CLOSE, OPEN AND RETURN OF CAM