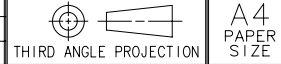


| REV | DATE      | DRAWN/CHKD | DESCRIPTION          |
|-----|-----------|------------|----------------------|
| A   | 13NOV01   | GDM        | EMI FROM 42 TO 30 dB |
| B   | 09APR2002 | GDM        | UPDATE FORMAT        |
| C   | 25APR2005 | RLR/VNI    | PRN: P2005-0487      |



SOUTHCO PERFORMANCE GUIDELINES  
 THE PERFORMANCE GUIDELINES SHOWN ON THIS PAGE ARE SUPPLIED AS A GENERAL GUIDE ONLY, AS CONDITIONS VARY WITH EACH APPLICATION AND METHOD OF INSTALLATION. STRENGTH DATA GIVEN IS FOR FAILURE OF THE PRODUCT OR FOR SUFFICIENT DEFORMATION TO MAKE PRODUCT INOPERABLE. NO SAFETY FACTOR HAS BEEN APPLIED IT IS RECOMMENDED THAT THE USER REQUEST A PRODUCT SAMPLE FOR TESTING TO DETERMINE THE SUITABILITY OF THE PRODUCT FOR THE PURPOSE INTENDED AND USER'S PARTICULAR APPLICATION.

ASSEMBLY PART NUMBER M3-40-100-25  
 M3-40-101-25

### AVERAGE HANDLE FORCE

| TOTAL CLAMP LOAD | 1ST CYCLE | 500 CYCLES | 1000 CYCLES |
|------------------|-----------|------------|-------------|
| 890 N            | 119 N     | 211 N      | 291 N       |
| 890 N*           | 103 N*    | 117 N*     | 121 N*      |

\*FORCES OBTAINED WHEN M3-50'S WERE LUBRICATED ONCE PRIOR TO FIRST CYCLE.

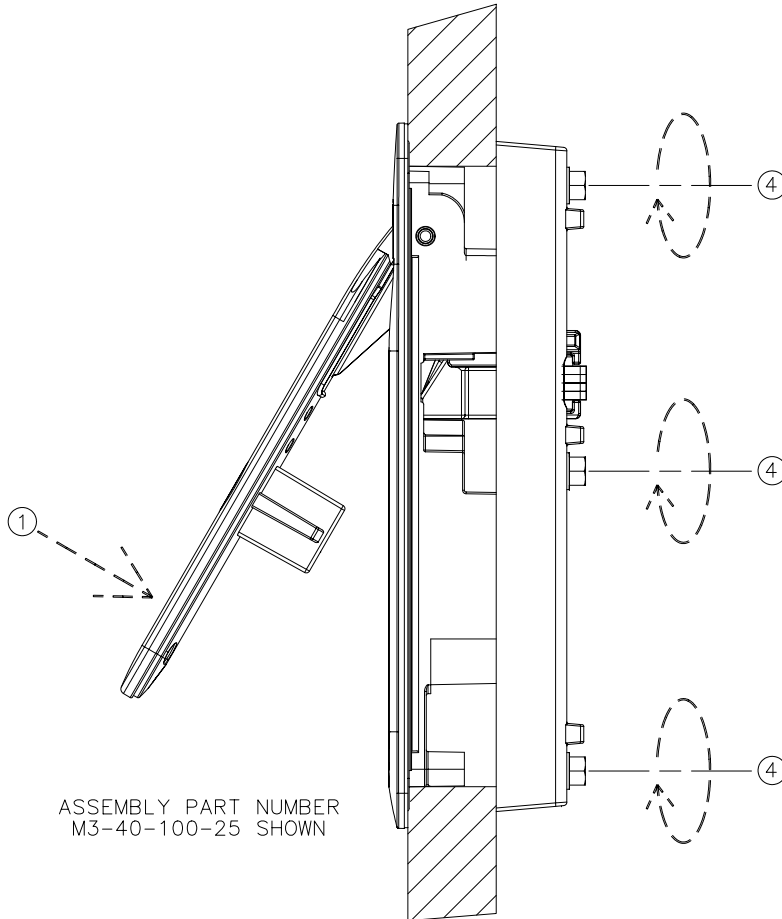
- ① MAXIMUM RECOMMENDED HANDLE FORCE: 340 N
- ② CYCLING AT -5°C AND 50°C HAD NO EFFECT ON HANDLE FORCE.  
 (TEST PERFORMED ON LATCHES WHICH HAD BEEN PREVIOUSLY CYCLED 1000 TIMES AT AMBIENT TEMPERATURE)

- ③ AVERAGE ULTIMATE SIDE LOAD ON HANDLE IN OPEN POSITION: 930 N

- ④ MAXIMUM RECOMMENDED MOUNTING SCREW INSTALLATION TORQUE: 4.5 N·m

- ⑤ TEST APPLICATIONS HAVE MET OR EXCEEDED THE FOLLOWING SPECIFICATIONS: IEC 529 IP-66 / NEMA 4 / IEC 68-2-52 LEVEL 1 / ASTM B117 14 DAYS / CAN BE USED IN EMI APPLICATIONS. LATCH SHOULD BE TESTED IN THE ACTUAL APPLICATION FOR BEST RESULTS.

AVERAGE ULTIMATE LOAD - THE LOAD THAT CAUSES FAILURE OR EXCESSIVE DEFORMATION WHICH RENDERS THE PRODUCT INOPERABLE.



ASSEMBLY PART NUMBER M3-40-100-25 SHOWN