

6

5

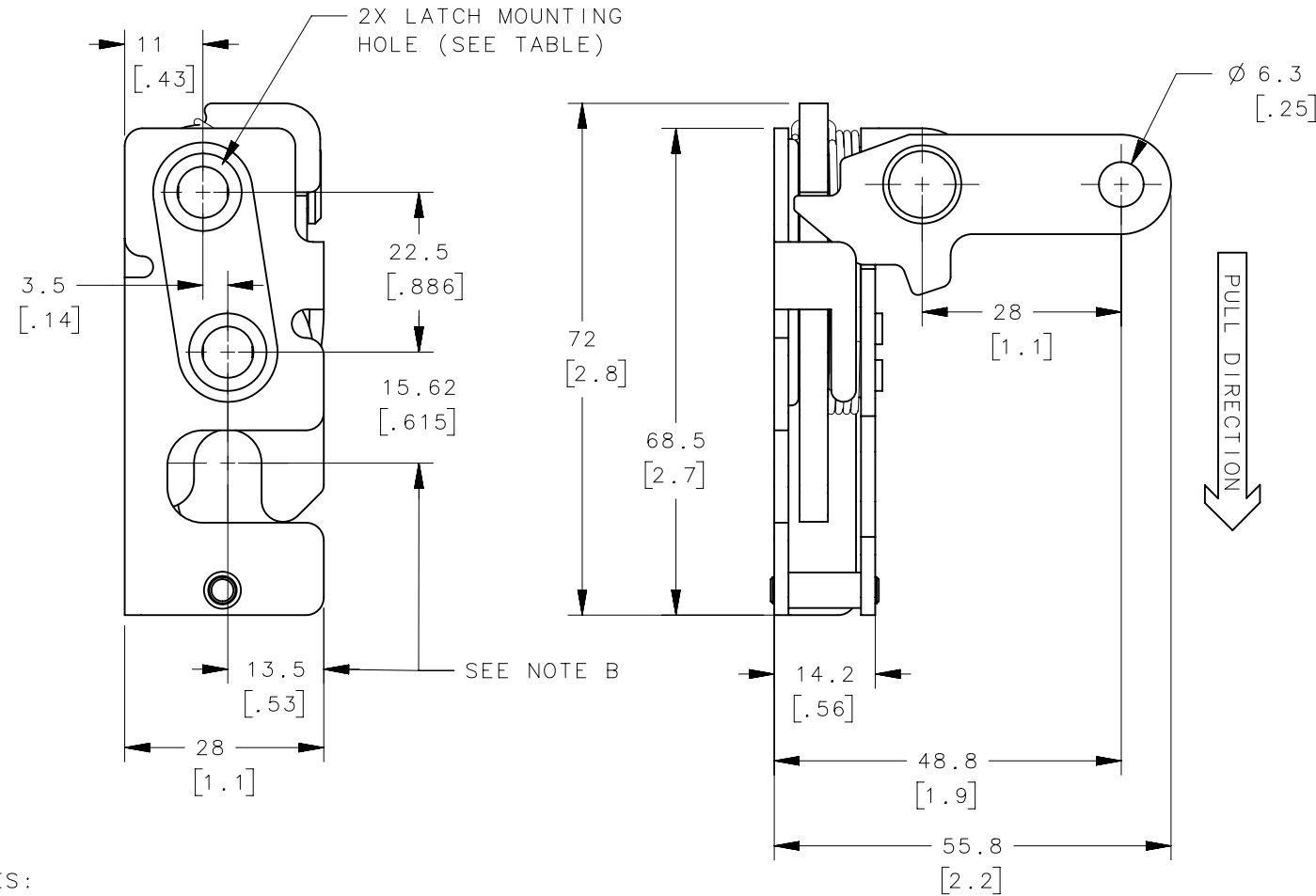
4

3

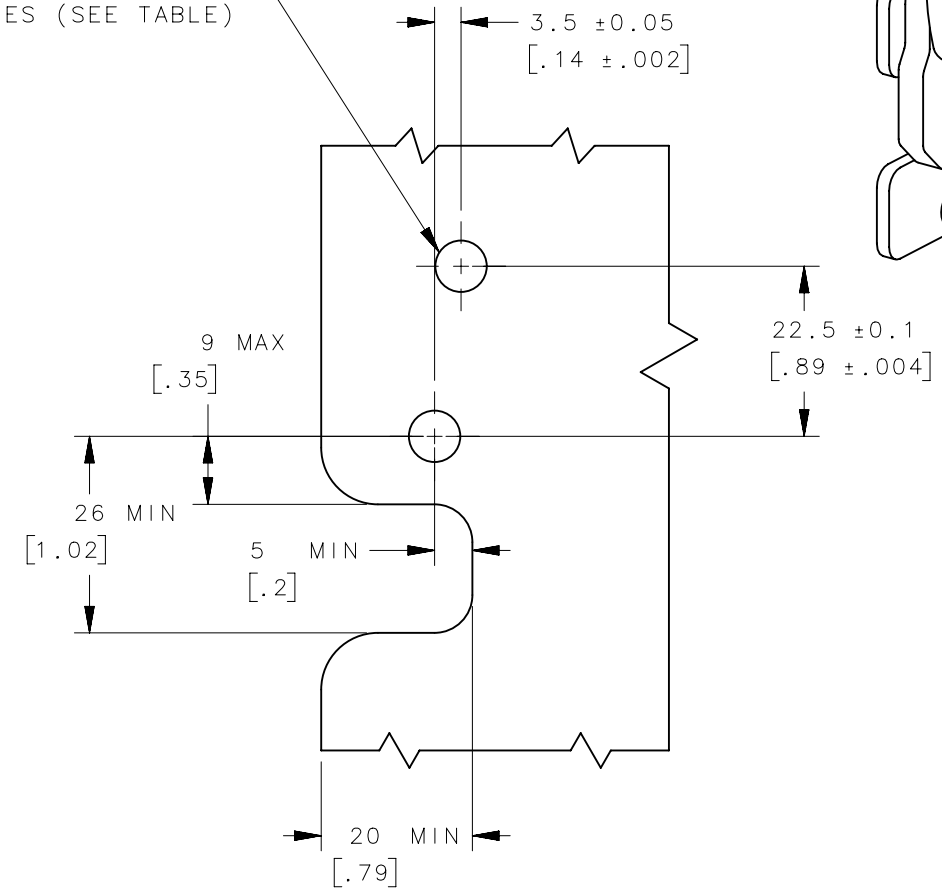
2

1

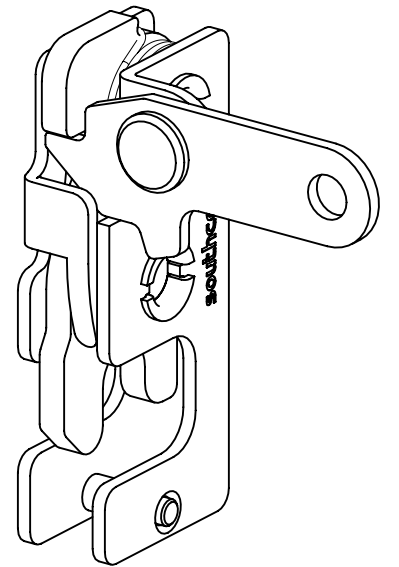
REVISION HISTORY			
REV	DATE	BY	DESCRIPTION
B	21 JAN 2014	ACH/ASM	PRN: P2014-0102



2X MINIMUM RECOMMENDED  
PANEL HOLES (SEE TABLE)



PANEL PREPARATION



NOTES:

A. MATERIAL AND FINISH:

- HOUSING, LEVER AND INTERNAL COMPONENTS:  
MATERIAL - STEEL  
-10 ZINC PLATED, BRIGHT CHROMATE  
-77 ZINC NICKEL, BRIGHT CHROMATE
- PAWL AND TRIGGER:  
MATERIAL - HARDENED STEEL  
-10 ZINC PLATED, BRIGHT CHROMATE  
-77 ZINC NICKEL, BRIGHT CHROMATE  
ZINC PLATE CHROMATE.
- SPRING: STAINLESS STEEL, PASSIVATED

B. THESE DIMENSIONS REQUIRED FOR MOUNTING STRIKER BOLT.

R4-10-30-101-77	Ø 7.2mm THRU	SEE NOTE A	SEE NOTE A	
R4-10-31-101-77	1/4-20 THREAD	SEE NOTE A	SEE NOTE A	
R4-10-32-101-77	M6 THREAD	SEE NOTE A	SEE NOTE A	
R4-10-30-101-10	Ø 7.2mm THRU	SEE NOTE A	SEE NOTE A	
R4-10-31-101-10	1/4-20 THREAD	SEE NOTE A	SEE NOTE A	
R4-10-32-101-10	M6 THREAD	SEE NOTE A	SEE NOTE A	
ASSEMBLY PART NUMBER	LATCH MOUNTING HOLE	MATERIAL	FINISH	GENERAL NOTES
	THIRD ANGLE PROJECTION			
	MILLIMETERS [IN]			
SURFACE AREA	TOLERANCES UNLESS OTHERWISE NOTED	DESCRIPTION R4 MINI TWO STAGE ROTARY LATCH PERPENDICULAR - RIGHT HAND		
VOLUME	ALL DIMENSIONS WITHOUT TOLERANCES ARE FOR REFERENCE ONLY.	SIZE B	SYSTEM NX	DWG NO. J-R4-10-30-101
PROPRIETARY ITEM	PER ASME Y14.5M-1994	DRAWN BY DJK	DATE 26APR2012	SCALE 1:1
EXCEPT FOR USES EXPRESSLY GRANTED IN WRITING, INFORMATION DISCLOSED HEREON IS CONFIDENTIAL AND ALL RIGHTS, PATENT AND OTHERWISE, ARE RESERVED BY SOUTHCO, INC.				SHEET 1 OF 3

6

5

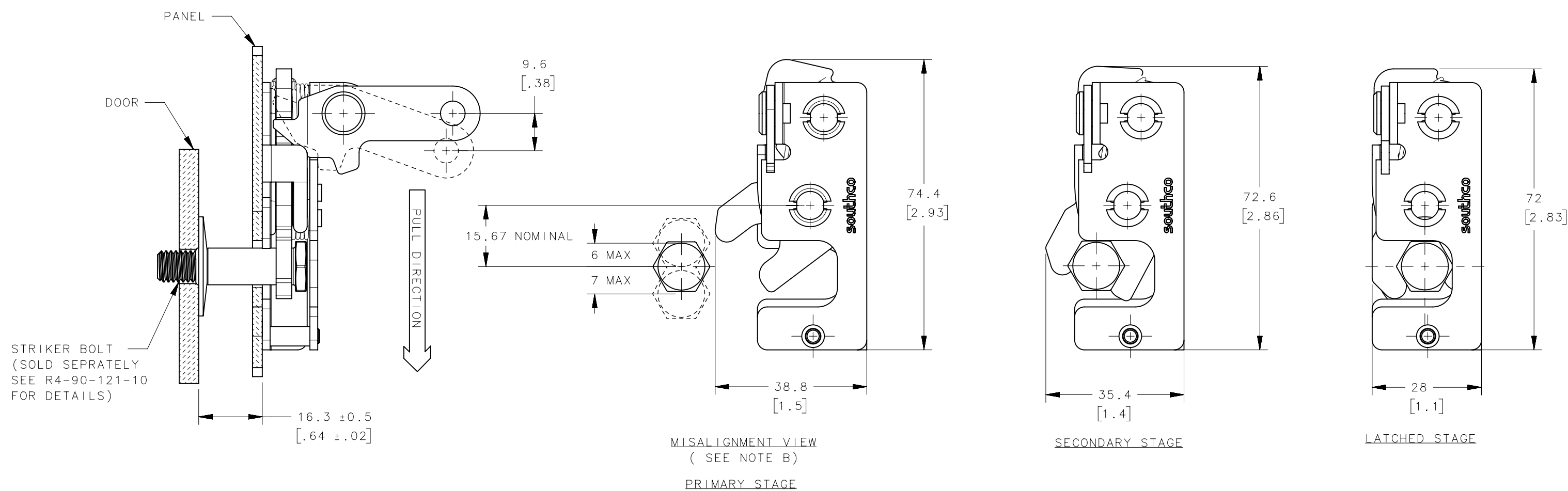
4

3

2

1

REVISION HISTORY			
REV	DATE	BY	DESCRIPTION
B	21 JAN 2014	ACH/ASM	PRN: P2014-0102

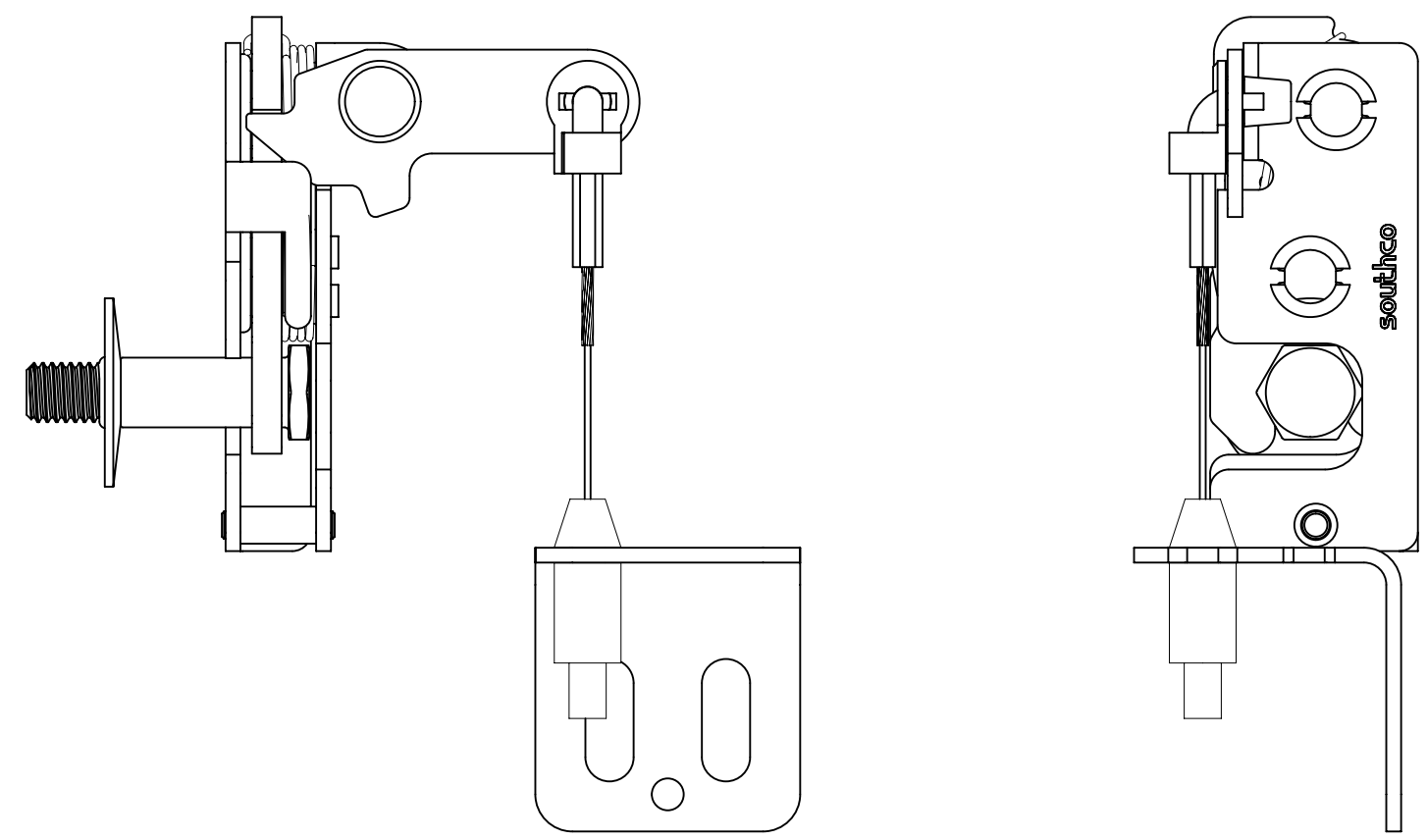
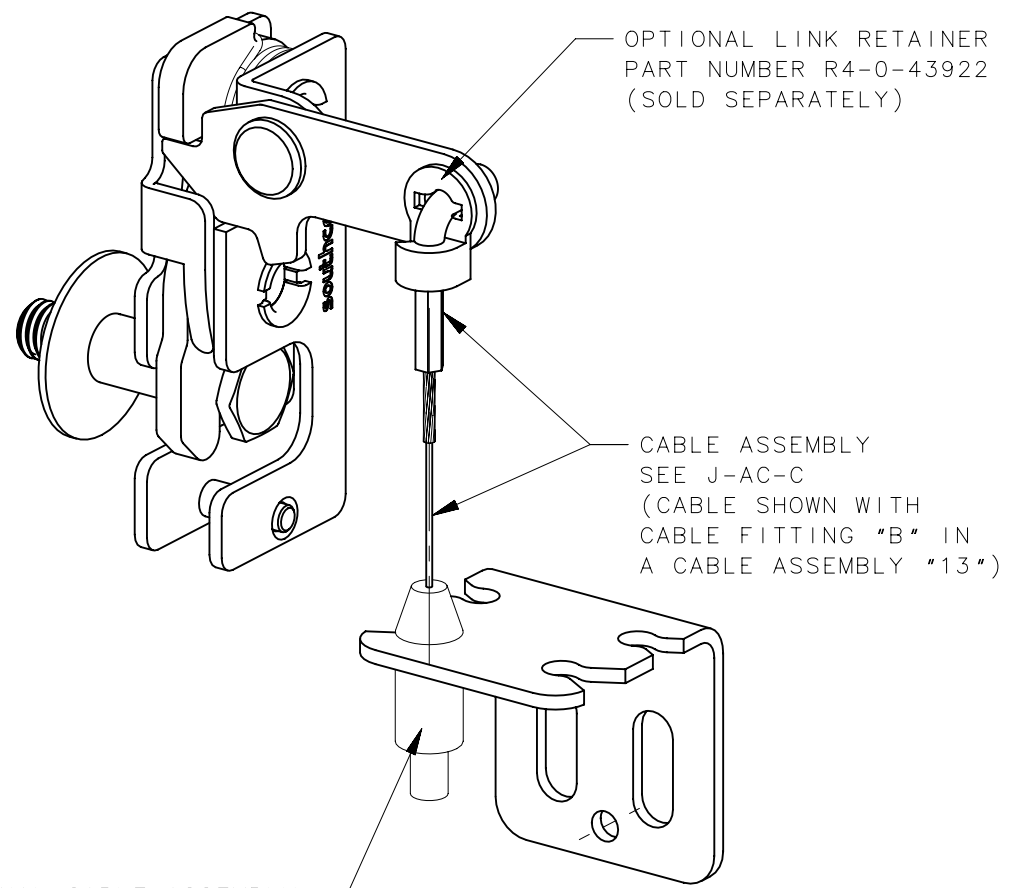


- NOTES:
- A. THE TOLERANCE BETWEEN THE LATCH AND STRIKER BOLT ASSUMES A NON-RIGID DOOR INSTALLATION THAT WILL ALLOW THE DOOR TO MOVE INTO THE NOMINAL POSITION DURING LATCHING. RIGID DOORS MUST HAVE THE STRIKER INSTALLED PER THE PANEL PREPARATION RECOMMENDATION.
  - B. THE MISALIGNMENT VIEW ASSUMES THE LATCH IS CONNECTED TO A PERFECTLY RIGID DOOR AND HINGE; THEREFORE, THERE IS NO DOOR AND/OR HINGE SLACK ASSOCIATED WITH THESE DIMENSIONS. THE MISALIGNMENT VIEW DOES NOT TAKE FLEXING OF THE STRIKER BOLT INTO ACCOUNT.

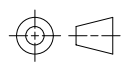

R4-10-30-101-77	Ø 7.2mm THRU	Ø 7.6 [.299]	
R4-10-31-101-77	1/4-20 THREAD	Ø 6.8 [.268]	
R4-10-32-101-77	M6 THREAD	Ø 6.4 [.252]	
R4-10-30-101-10	Ø 7.2mm THRU	Ø 7.6 [.299]	
R4-10-31-101-10	1/4-20 THREAD	Ø 6.8 [.268]	
R4-10-32-101-10	M6 THREAD	Ø 6.4 [.252]	
ASSEMBLY PART NUMBER	LATCH MOUNTING HOLE	MINIMUM RECOMMENDED PANEL HOLE	GENERAL NOTES

THIRD ANGLE PROJECTION		<b>southco</b> <sup>®</sup> CONNECT • CREATE • INNOVATE	
MILLIMETERS [IN]			
SURFACE AREA		DESCRIPTION R4 MINI TWO STAGE ROTARY LATCH PERPENDICULAR - RIGHT HAND	
VOLUME			
PROPRIETARY ITEM <small>EXCEPT FOR USES EXPRESSLY GRANTED IN WRITING, INFORMATION DISCLOSED HEREON IS CONFIDENTIAL AND ALL RIGHTS, PATENT AND OTHERWISE, ARE RESERVED BY SOUTHCO, INC.</small>		SIZE B	SYSTEM NX
PER ASME Y14.5M-1994		DATE 26 APR 2012	SCALE 1:1
		DRAWN BY DJK	SHEET 2 OF 3

REVISION HISTORY			
REV	DATE	BY	DESCRIPTION
B	21 JAN 2014	ACH/ASM	PRN: P2014-0102



R4-10-30-101-77	Ø 7.2mm THRU	Ø 7.6 [ .299 ]	
R4-10-31-101-77	1/4-20 THREAD	Ø 6.8 [ .268 ]	
R4-10-32-101-77	M6 THREAD	Ø 6.4 [ .252 ]	
R4-10-30-101-10	Ø 7.2mm THRU	Ø 7.6 [ .299 ]	
R4-10-31-101-10	1/4-20 THREAD	Ø 6.8 [ .268 ]	
R4-10-32-101-10	M6 THREAD	Ø 6.4 [ .252 ]	
ASSEMBLY PART NUMBER	LATCH MOUNTING HOLE	MINIMUM RECOMMENDED PANEL HOLE	GENERAL NOTES

THIRD ANGLE PROJECTION				 CONNECT • CREATE • INNOVATE		
MILLIMETERS [IN]						
SURFACE AREA	TOLERANCES UNLESS OTHERWISE NOTED ALL DIMENSIONS WITHOUT TOLERANCES ARE FOR REFERENCE ONLY.			DESCRIPTION R4 MINI TWO STAGE ROTARY LATCH PERPENDICULAR - RIGHT HAND		
VOLUME						
PROPRIETARY ITEM	SIZE B	SYSTEM NX	DWG NO. J-R4-10-30-101	DRAWN BY DJK		
EXCEPT FOR USES EXPRESSLY GRANTED IN WRITING, INFORMATION DISCLOSED HEREON IS CONFIDENTIAL AND ALL RIGHTS, PATENT AND OTHERWISE, ARE RESERVED BY SOUTHCO, INC.	PER ASME Y14.5M-1994	DATE 26APR2012	SCALE 1:1			