

6

5

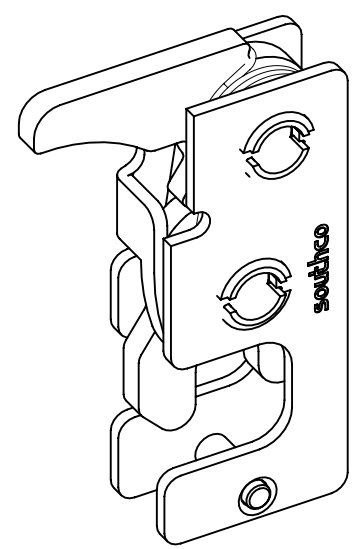
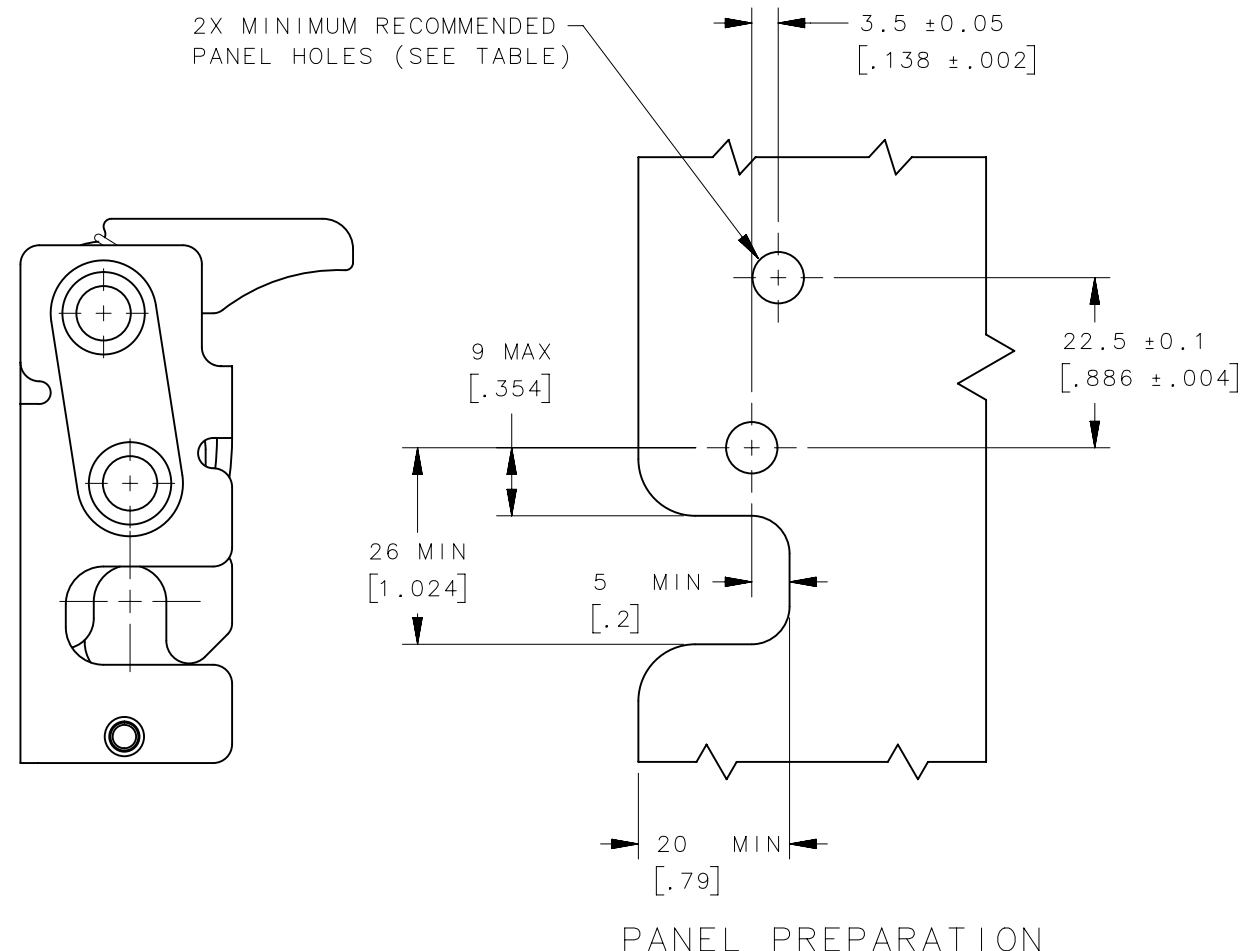
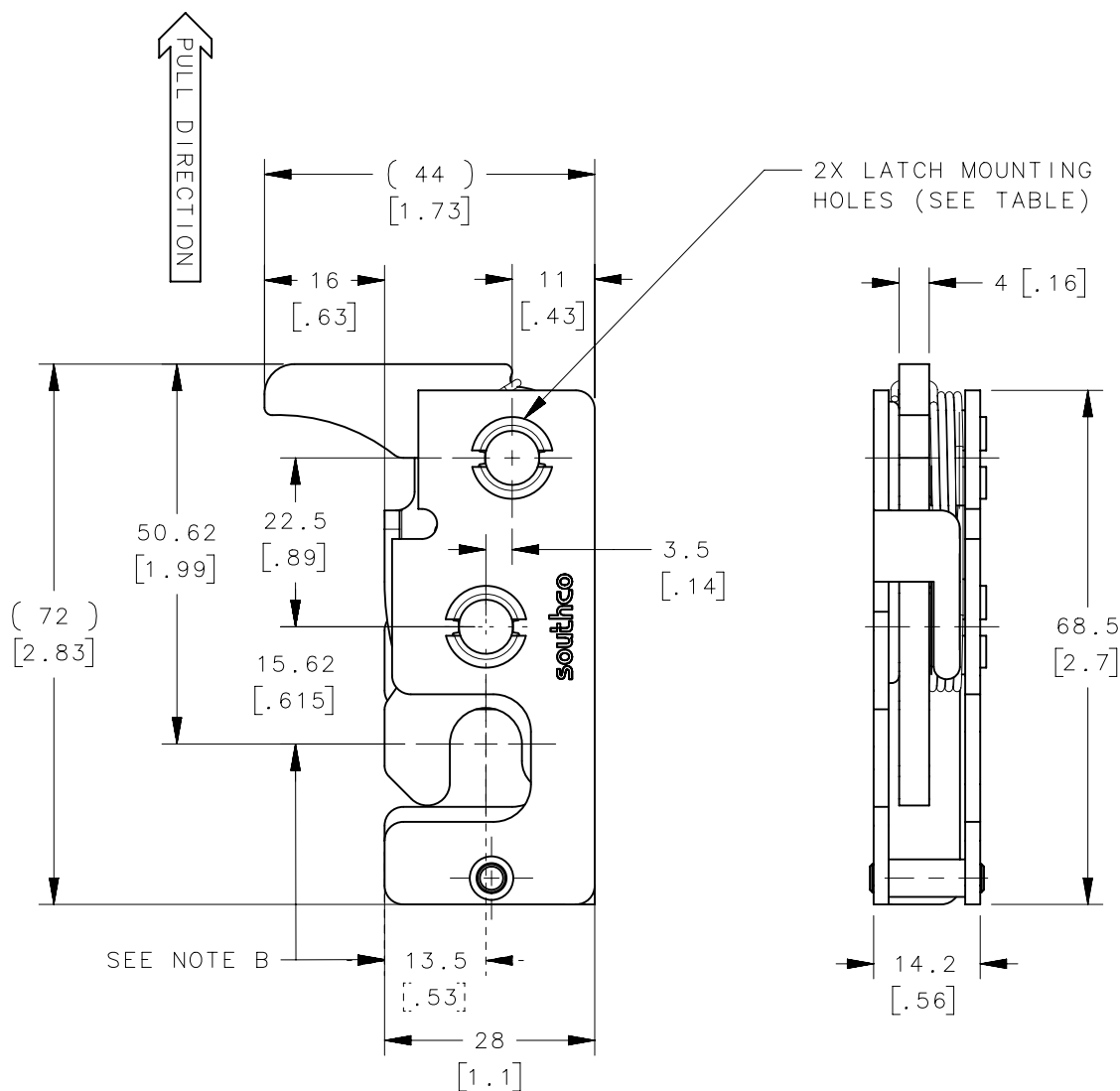
4

3

2

1

REVISION HISTORY			
REV	DATE	BY	DESCRIPTION
A	10NOV2010	ACH/JCK	PRN: P2011-0543



R4-10-10-401-20 SHOWN

- NOTES:
- A. MATERIAL AND FINISH:
 - ALL PARTS STAINLESS STEEL.
 - B. THESE DIMENSIONS REQUIRED FOR MOUNTING STRIKER BOLT.

R4-10-10-401-20	Ø 7.2mm THRU	Ø 7.6 [.299]
R4-10-11-401-20	1/4-20 THREAD	Ø 6.8 [.268]
R4-10-12-401-20	M6 THREAD	Ø 6.4 [.252]
ASSEMBLY PART NUMBER	LATCH MOUNTING HOLE	MINIMUM RECOMMENDED PANEL HOLE
	THIRD ANGLE PROJECTION	southco CONNECT • CREATE • INNOVATE
	MILLIMETERS [IN]	
SURFACE AREA XXXXXmm ²	TOLERANCES UNLESS OTHERWISE NOTED ALL DIMENSIONS WITHOUT TOLERANCES ARE FOR REFERENCE ONLY.	DESCRIPTION R4 STAINLESS STEEL MINI ROTARY LATCH DIRECT ACTUATOR - RIGHT HAND
VOLUME XXXXXmm ³		SIZE SYSTEM B NX
PROPRIETARY ITEM <small>EXCEPT FOR USES EXPRESSLY GRANTED IN WRITING, INFORMATION DISCLOSED HEREON IS CONFIDENTIAL AND ALL RIGHTS, PATENT AND OTHERWISE, ARE RESERVED BY SOUTHCO, INC.</small>		DWG NO. J-R4-10-10-401-20
	PER ASME Y14.5M-1994	DRAWN BY ACH/JCK
		DATE 10NOV2010
		SCALE 1:1
		SHEET 1 OF 2

6

5

4

3

2

1

6

5

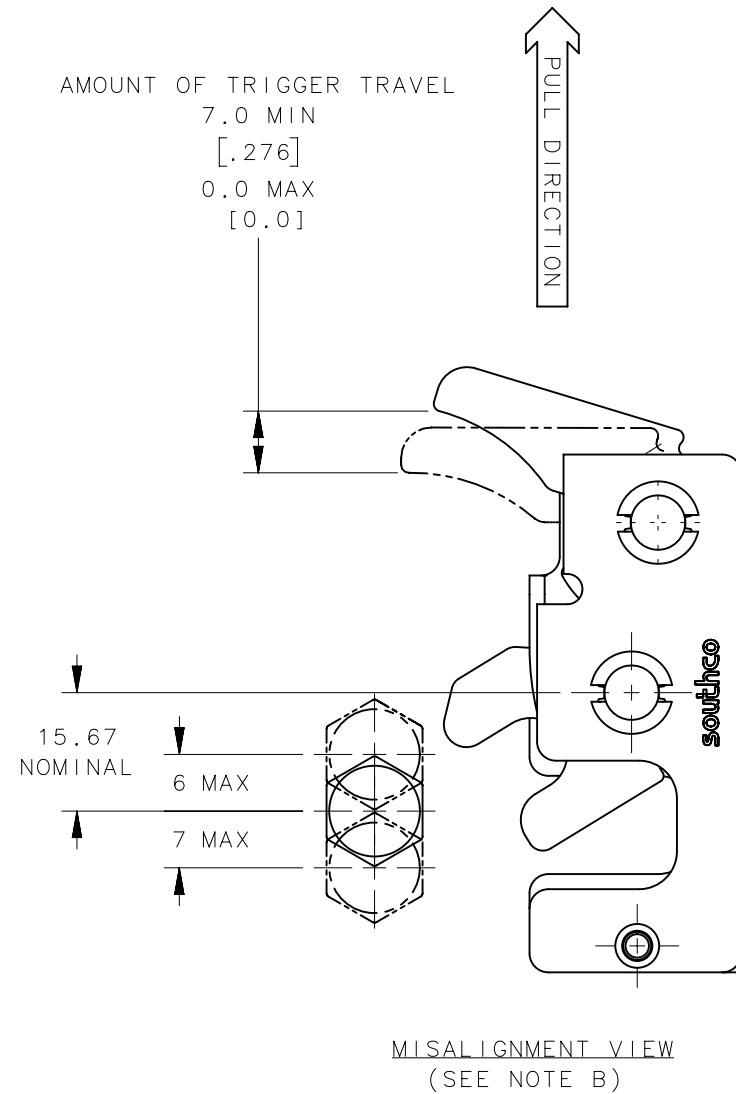
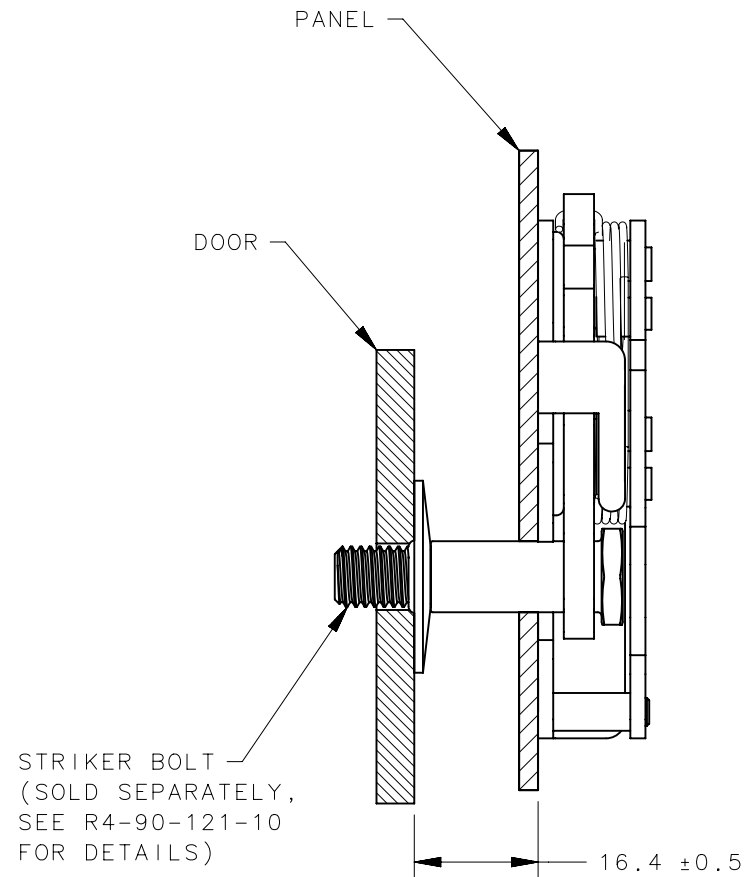
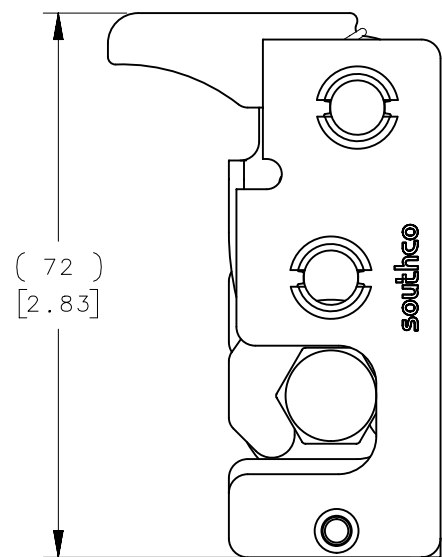
4

3

2

1

REVISION HISTORY			
REV	DATE	BY	DESCRIPTION
C	25JAN2012	ACH/JCK	PRN: P2011-0543



NOTES:

- A. THE TOLERANCE BETWEEN THE LATCH AND STRIKER BOLT ASSUMES A NON-RIGID DOOR INSTALLATION THAT WILL ALLOW THE DOOR TO MOVE INTO THE NOMINAL POSITION DURING LATCHING. RIGID DOORS MUST HAVE THE STRIKER INSTALLED PER THE PANEL PREPARATION RECOMMENDATION.
- B. THE MISALIGNMENT VIEW ASSUMES THE LATCH IS CONNECTED TO A PERFECTLY RIGID DOOR AND HINGE; THEREFORE, THERE IS NO DOOR AND/OR HINGE SLACK ASSOCIATED WITH THESE DIMENSIONS. THE MISALIGNMENT VIEW DOES NOT TAKE FLEXING OF THE STRIKER BOLT INTO ACCOUNT.

R4-10-10-401-20	Ø 7.2mm THRU	Ø 7.6 [.299]
R4-10-11-401-20	1/4-20 THREAD	Ø 6.8 [.268]
R4-10-12-401-20	M6 THREAD	Ø 6.4 [.252]
ASSEMBLY PART NUMBER	LATCH MOUNTING HOLE	MINIMUM RECOMMENDED PANEL HOLE
	THIRD ANGLE PROJECTION	southco CONNECT • CREATE • INNOVATE
	MILLIMETERS [IN]	
SURFACE AREA XXXXXmm ²	TOLERANCES UNLESS OTHERWISE NOTED ALL DIMENSIONS WITHOUT TOLERANCES ARE FOR REFERENCE ONLY.	DESCRIPTION R4 STAINLESS STEEL MINI ROTARY LATCH DIRECT ACTUATOR - RIGHT HAND
VOLUME XXXXXmm ³		SIZE SYSTEM B NX
PROPRIETARY ITEM EXCEPT FOR USES EXPRESSLY GRANTED IN WRITING, INFORMATION DISCLOSED HEREON IS CONFIDENTIAL AND ALL RIGHTS, PATENT AND OTHERWISE, ARE RESERVED BY SOUTHCO, INC.		DWG NO. J-R4-10-10-401-20
	PER ASME Y14.5M-1994	DRAWN BY ACH/JCK
		DATE 10NOV2010
		SCALE 1:1
		SHEET 2 OF 2

6

5

4

3

2

1