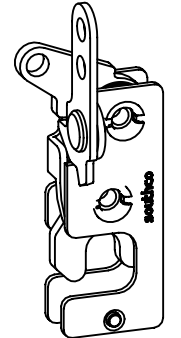
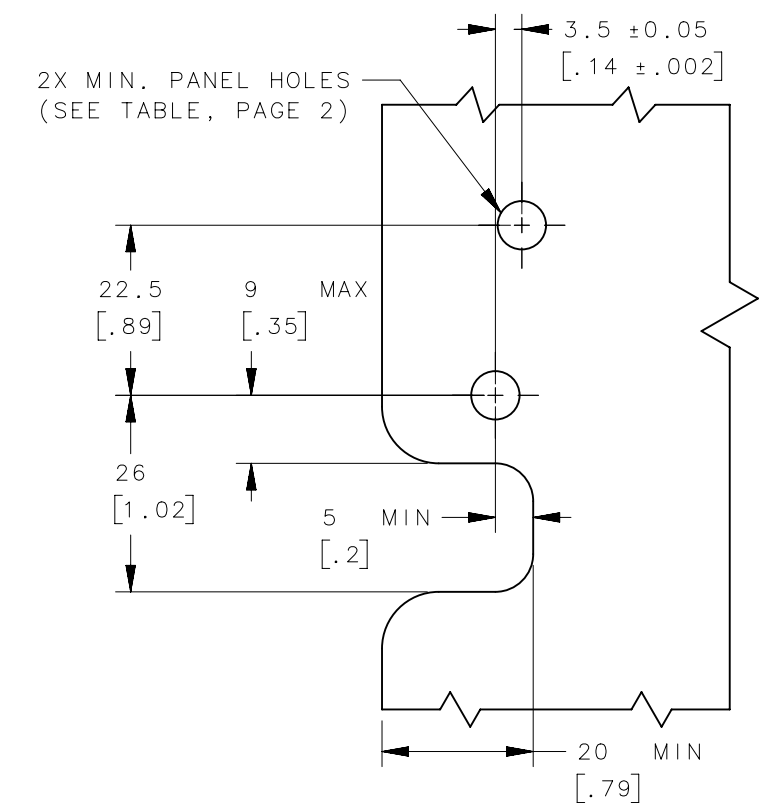
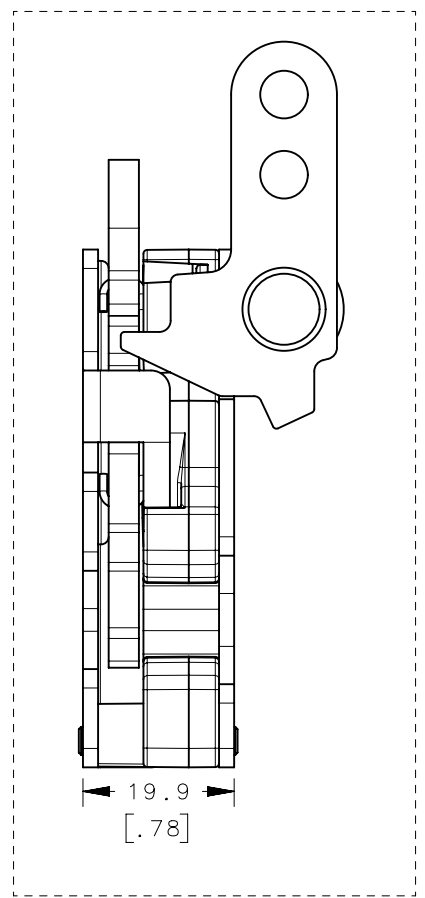
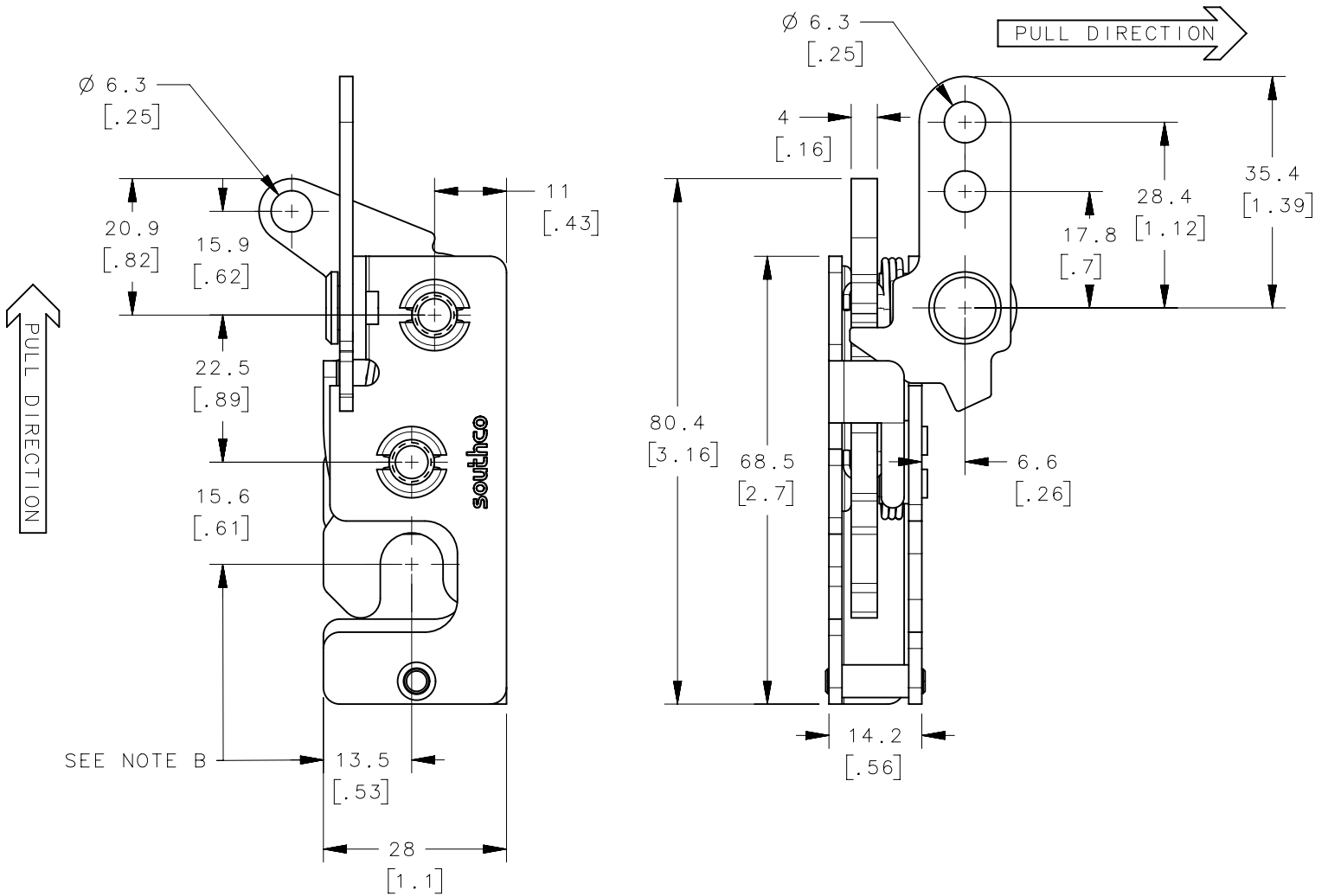


REVISION HISTORY			
REV	DATE	BY	DESCRIPTION
B	03NOV2015	DGJ/ACH	PRN: P2015-2204

STANDARD

WITH INTEGRATED BUMPER

PANEL PREPARATION



SEE NOTE B

ASSEMBLY PART No.

R4-10-□□-80□-10

<u>STAGE & ACTUATION</u>	<u>MOUNTING STYLE</u>	<u>BUMPER OPTION</u>
1 - SINGLE STAGE, RIGHT HAND	0 - Ø 7.2 [.283] THRU	1 - STANDARD (WITHOUT BUMPER)
3 - DUAL STAGE, RIGHT HAND	1 - 1/4-20 THREAD	5 - INTEGRATED BUMPER
	2 - M6x1 THREAD	

NOTES:

- A. MATERIAL AND FINISH:
- HOUSING, LEVER, RIVET AND INTERNAL COMPONENTS: STEEL, ZINC PLATED, BRIGHT CHROMATE
 - PAWL AND TRIGGER: HARDENED STEEL, ZINC PLATED, BRIGHT CHROMATE
 - SPRING: STAINLESS STEEL, PASSIVATED
- B. THESE DIMENSIONS REQUIRED FOR MOUNTING STRIKER BOLT.

	THIRD ANGLE PROJECTION				
	MILLIMETERS [IN]				
SURFACE AREA	mm ²	DESCRIPTION R4-10 ROTARY LATCH, TOP PULL WITH SECONDARY TRIGGER, BUMPER OPTIONAL, RH			
VOLUME	mm ³				
PROPRIETARY ITEM	EXCEPT FOR USES EXPRESSLY GRANTED IN WRITING, INFORMATION DISCLOSED HEREON IS CONFIDENTIAL AND ALL RIGHTS, PATENT AND OTHERWISE, ARE RESERVED BY SOUTHCO, INC.	TOLERANCES UNLESS OTHERWISE NOTED ALL DIMENSIONS WITHOUT TOLERANCES ARE FOR REFERENCE ONLY.	SIZE B	SYSTEM NX	DWG NO. J-R4-10-8R
	PER ASME Y14.5M-1994	DRAWN BY CMG/DGJ	DATE 11JUN2015	SCALE 1:1	SHEET 1 OF 3

6

5

4

3

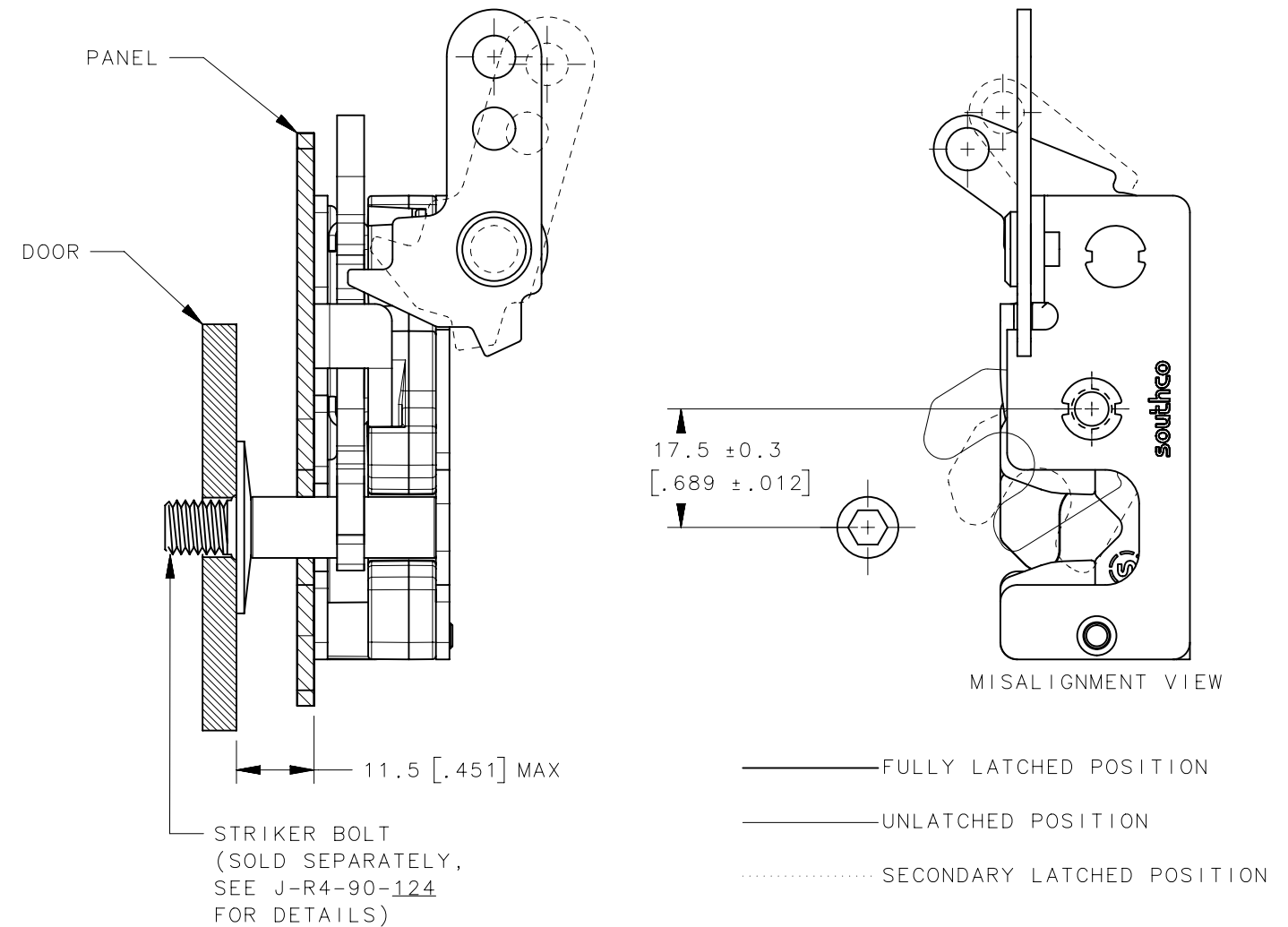
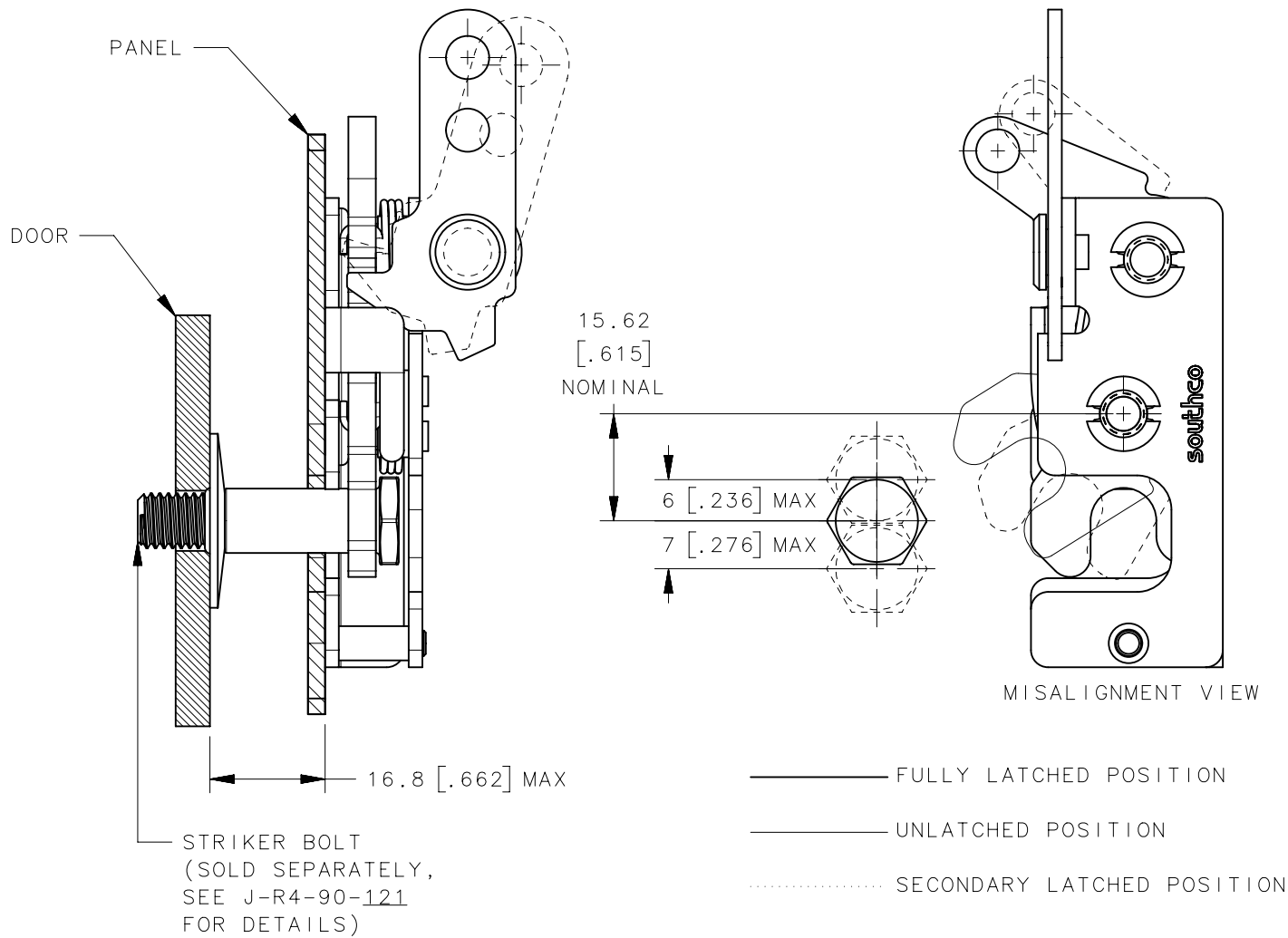
2

1

REVISION HISTORY			
REV	DATE	BY	DESCRIPTION
B	03NOV2015	DGJ/ACH	PRN: P2015-2204

STANDARD

WITH INTEGRATED BRACKET



- NOTES:
- A. THE TOLERANCE BETWEEN THE LATCH AND STRIKER BOLT ASSUMES A NON-RIGID DOOR INSTALLATION THAT WILL ALLOW THE DOOR TO MOVE INTO THE NOMINAL POSITION DURING LATCHING. RIGID DOORS MUST HAVE THE STRIKER INSTALLED PER THE PANEL PREPARATION RECOMMENDATION.
 - B. THE MISALIGNMENT VIEW ASSUMES THE LATCH IS CONNECTED TO A PERFECTLY RIGID DOOR AND HINGE; THEREFORE, THERE IS NO DOOR AND/OR HINGE SLACK ASSOCIATED WITH THESE DIMENSIONS. THE MISALIGNMENT VIEW DOES NOT TAKE FLEXING OF THE STRIKER BOLT INTO ACCOUNT.

R4-10-X0-80X-10	Ø 7.2mm THRU	Ø 7.2 [.299]
R4-10-X1-80X-10	1/4-20 THREAD	Ø 6.8 [.268]
R4-10-X2-80X-10	M6x1 THREAD	Ø 6.4 [.252]
ASSEMBLY PART NUMBER	MOUNTING STYLE	MINIMUM PANEL HOLE

THIRD ANGLE PROJECTION			
MILLIMETERS [IN]			
TOLERANCES UNLESS OTHERWISE NOTED		DESCRIPTION	
ALL DIMENSIONS WITHOUT TOLERANCES ARE FOR REFERENCE ONLY.		R4-10 ROTARY LATCH, TOP PULL WITH SECONDARY TRIGGER, BUMPER OPTIONAL, RH	
PROPRIETARY ITEM		SIZE	DWG NO.
EXCEPT FOR USES EXPRESSLY GRANTED IN WRITING, INFORMATION DISCLOSED HEREON IS CONFIDENTIAL AND ALL RIGHTS, PATENT AND OTHERWISE, ARE RESERVED BY SOUTHCO, INC.		B	NX J-R4-10-8R
PER ASME Y14.5M-1994		DRAWN BY	DATE
		CMG/DGJ	11JUN2015
		SCALE	SHEET
		1:1	2 OF 3

6

5

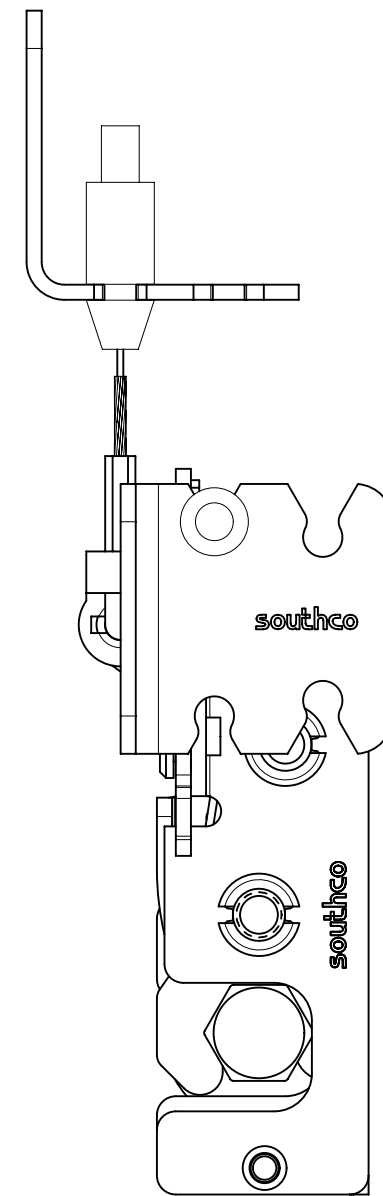
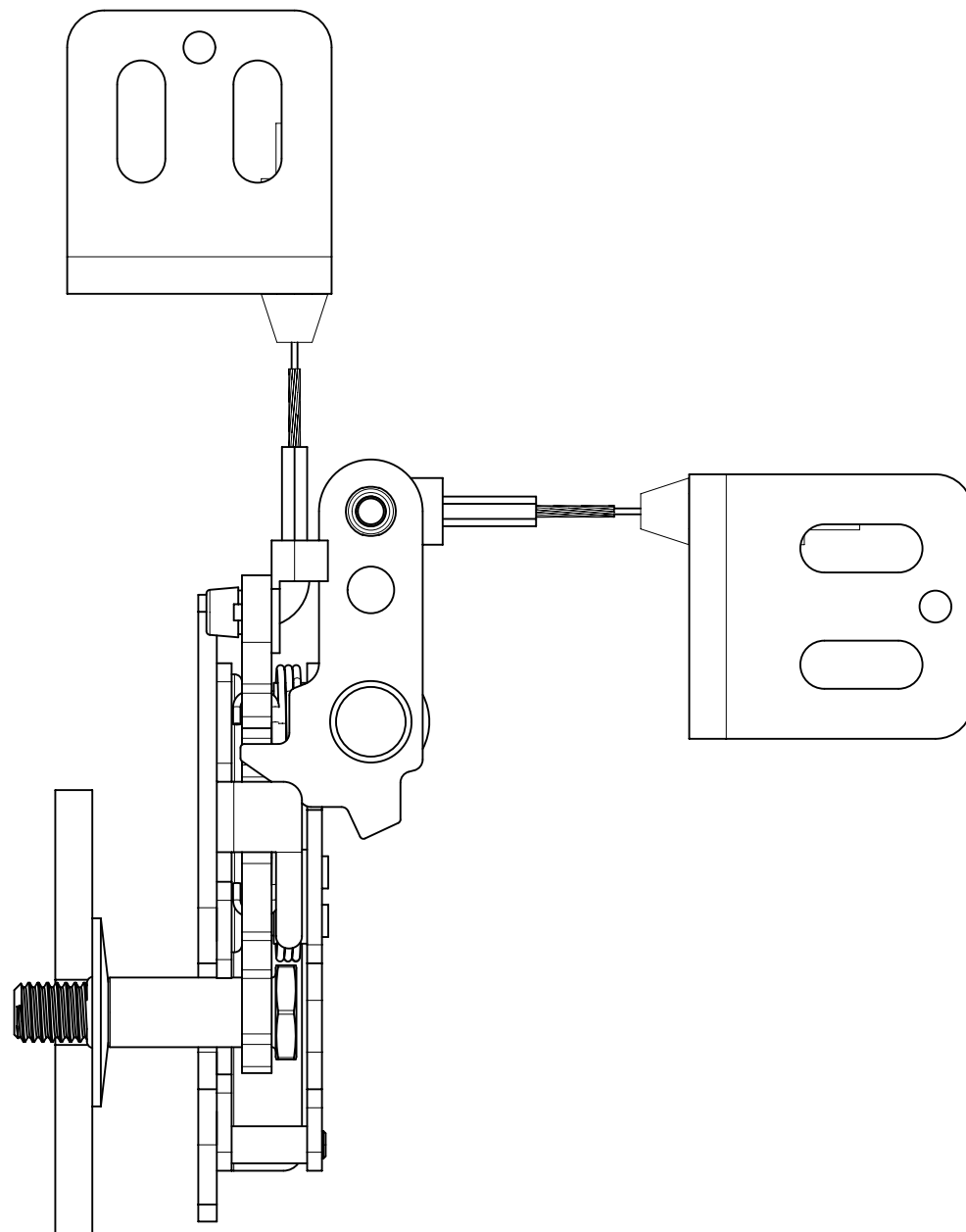
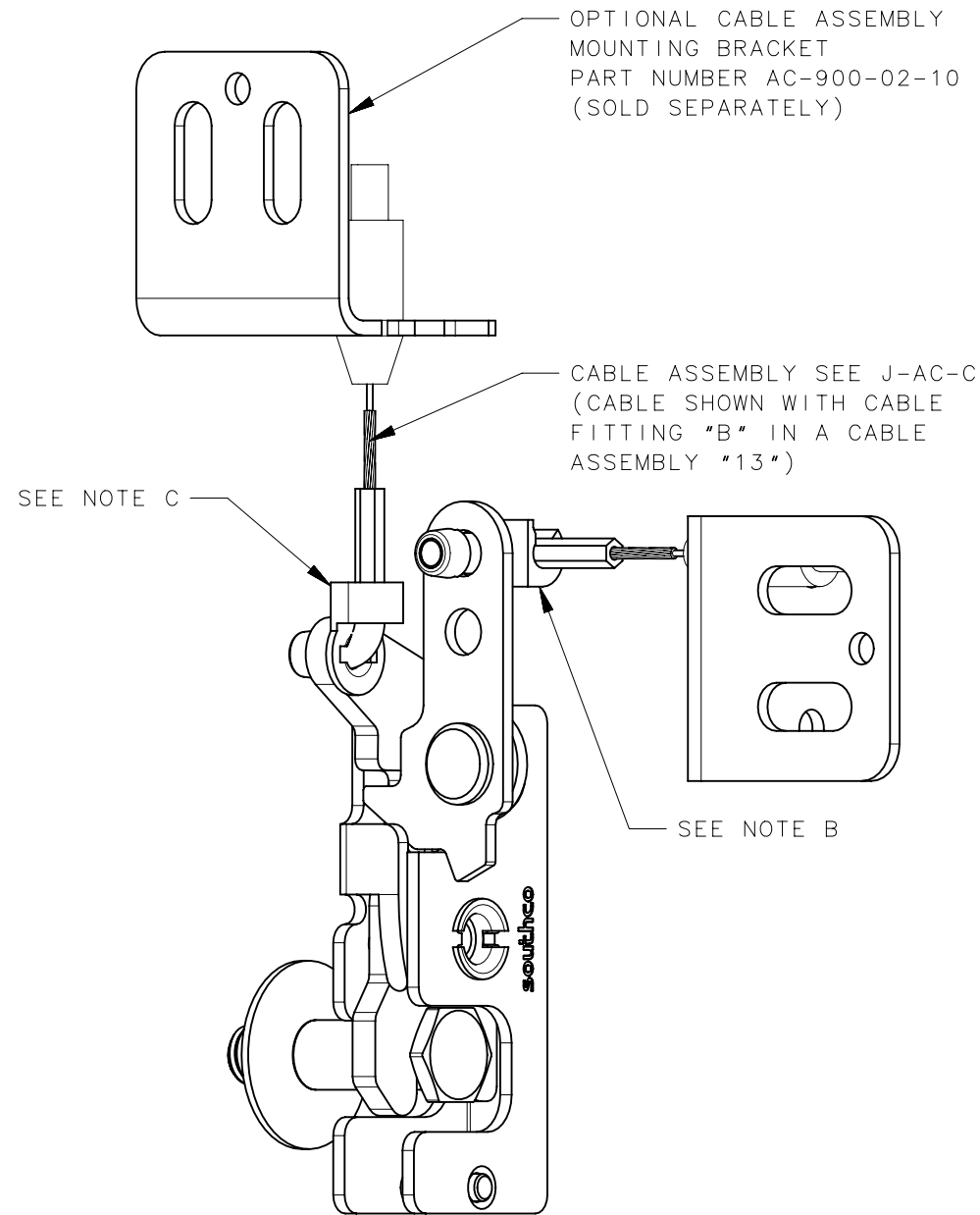
4

3

2

1

REVISION HISTORY			
REV	DATE	BY	DESCRIPTION
B	03NOV2015	DGJ/ACH	PRN: P2015-2204



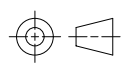
SEE NOTE C

CABLE ASSEMBLY SEE J-AC-C
(CABLE SHOWN WITH CABLE
FITTING "B" IN A CABLE
ASSEMBLY "13")

SEE NOTE B

NOTES:

- A. FOR OPTIONAL LINK RETAINERS (SOLD SEPARATELY), SEE J-R4-0-43922
- B. FOR LEVER RETAINER ONLY, USE R4-0-43922
- C. FOR TRIGGER RETAINER ONLY, USE R4-0-43922-2

		THIRD ANGLE PROJECTION 		southco [®] CONNECT • CREATE • INNOVATE	
		MILLIMETERS [IN]			
SURFACE AREA		mm ²		DESCRIPTION R4-10 ROTARY LATCH, TOP PULL WITH SECONDARY TRIGGER, BUMPER OPTIONAL, RH	
VOLUME		mm ³			
PROPRIETARY ITEM		TOLERANCES UNLESS OTHERWISE NOTED		SIZE SYSTEM DWG NO.	
EXCEPT FOR USES EXPRESSLY GRANTED IN WRITING, INFORMATION DISCLOSED HEREON IS CONFIDENTIAL AND ALL RIGHTS, PATENT AND OTHERWISE, ARE RESERVED BY SOUTHCO, INC.		ALL DIMENSIONS WITHOUT TOLERANCES ARE FOR REFERENCE ONLY.		B NX J-R4-10-8R	
PER ASME Y14.5M-1994		DRAWN BY CMG/DGJ		DATE 11JUN2015 SCALE 1:1 SHEET 3 OF 3	

6

5

4

3

2

1