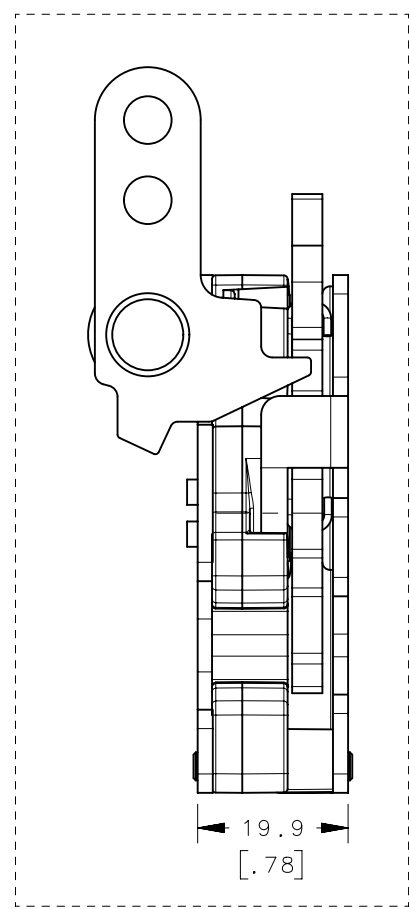
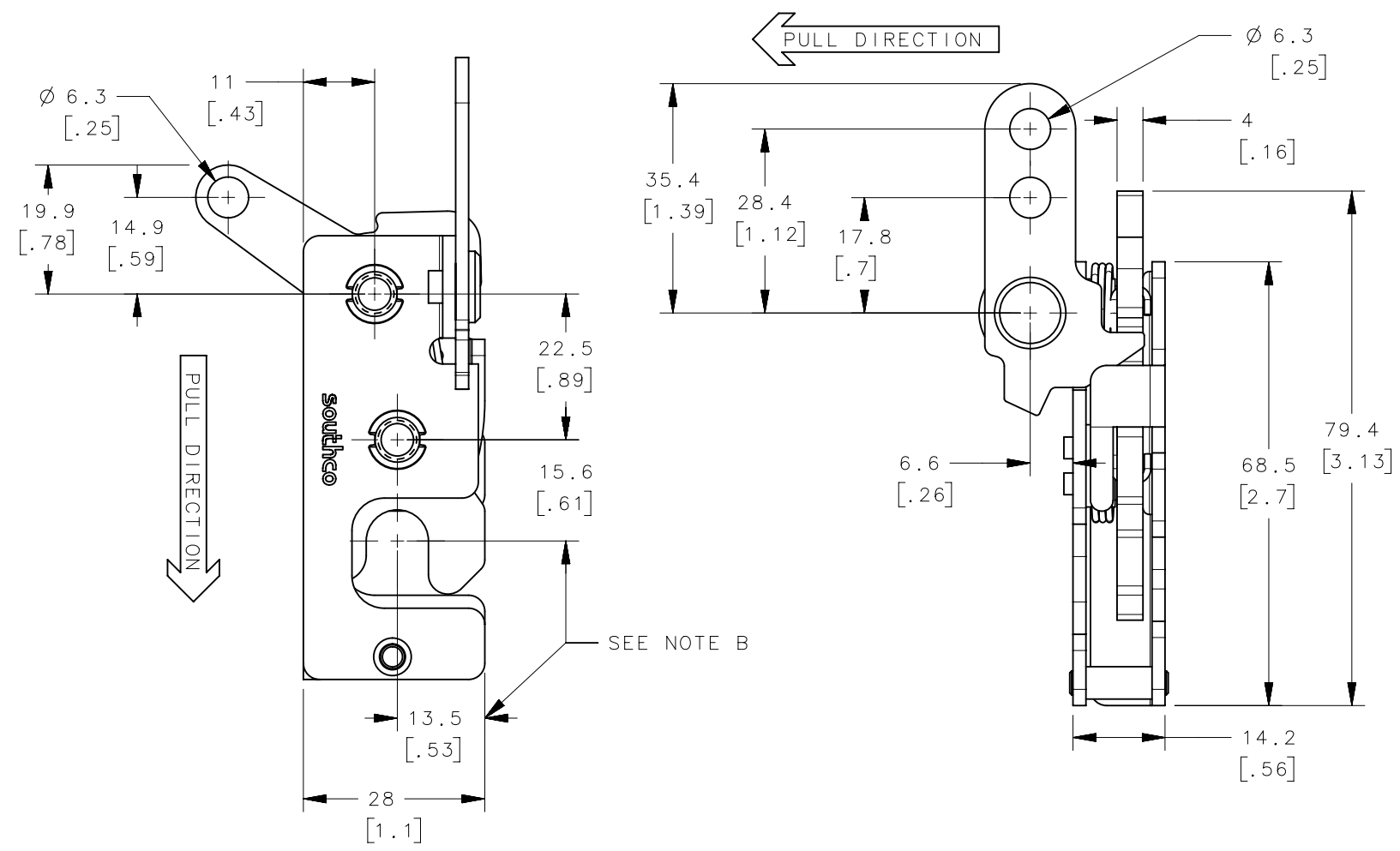


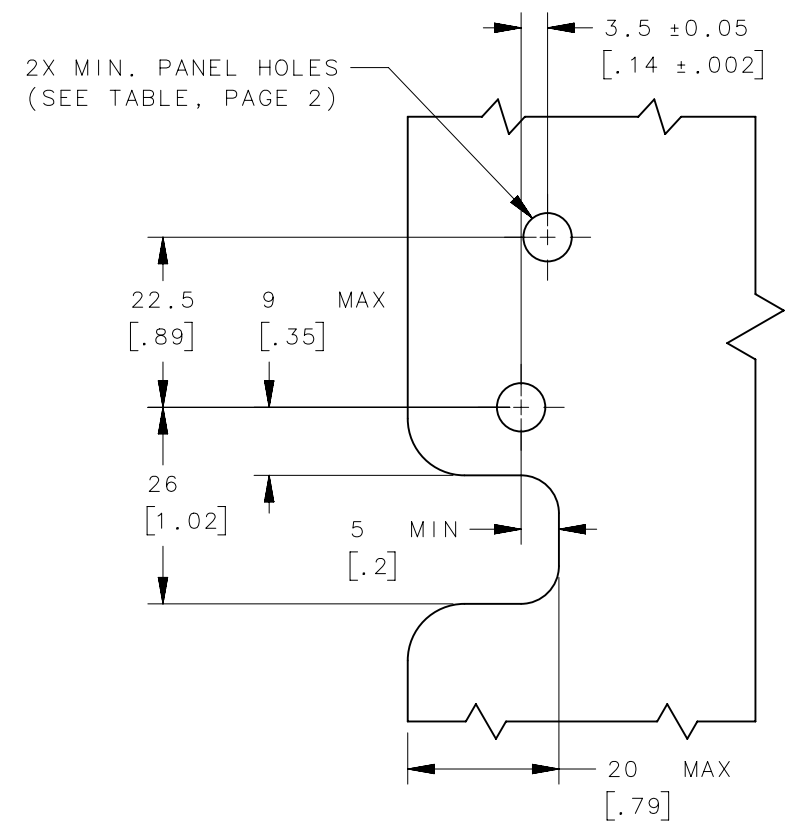
REVISION HISTORY			
REV	DATE	BY	DESCRIPTION
D	26AUG2015	CMG/DGJ	PRN: P2015-1747

STANDARD

WITH INTEGRATED BUMPER



PANEL PREPARATION



NOTES:

- A. MATERIAL AND FINISH:
 - HOUSING, LEVER, RIVET AND INTERNAL COMPONENTS: STEEL, ZINC PLATED, BRIGHT CHROMATE
 - PAWL AND TRIGGER: HARDENED STEEL, ZINC PLATED, BRIGHT CHROMATE
 - SPRING: STAINLESS STEEL, PASSIVATED
- B. THESE DIMENSIONS REQUIRED FOR MOUNTING STRIKER BOLT.

ASSEMBLY PART No.

R4-10-□□-70□-10

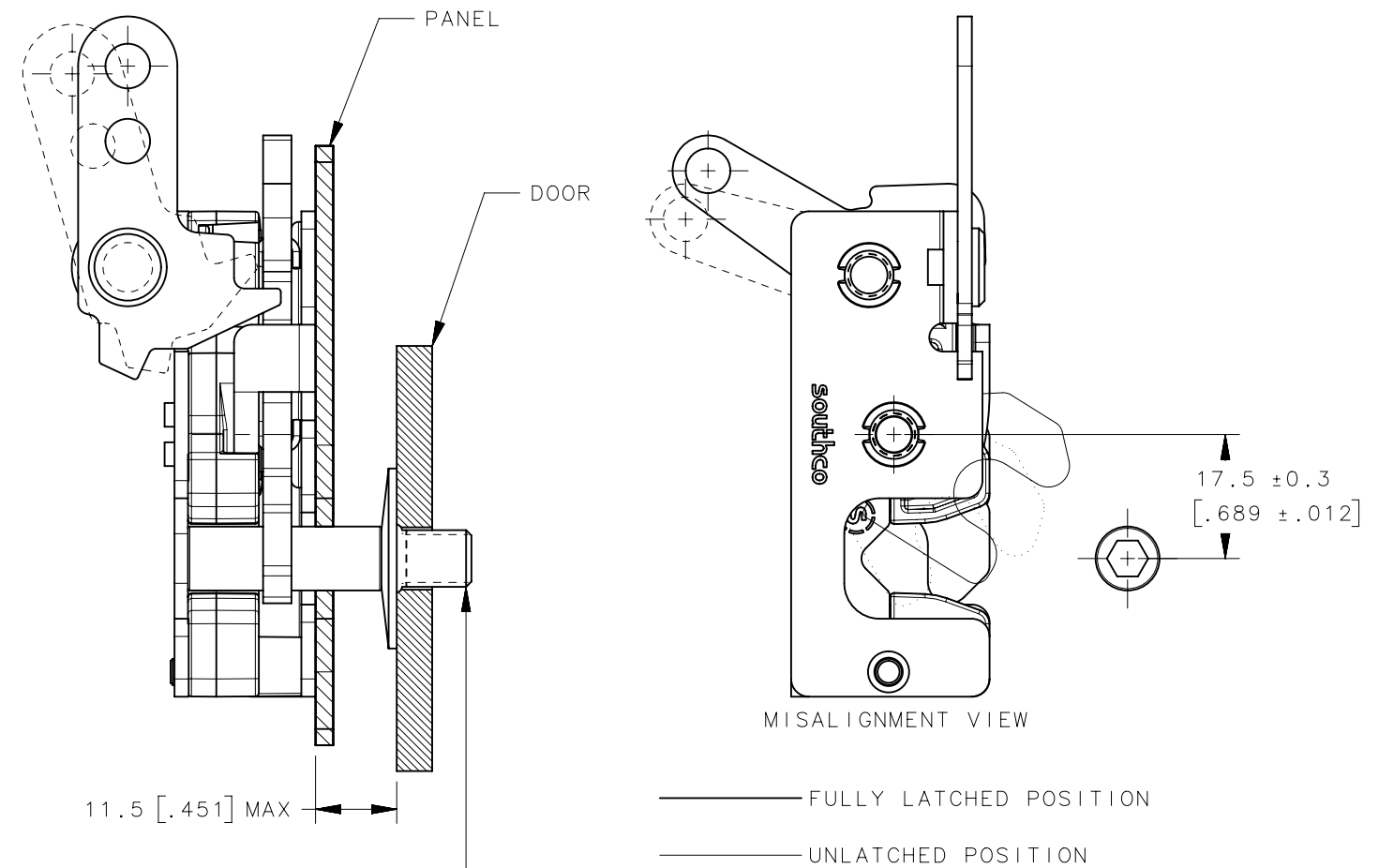
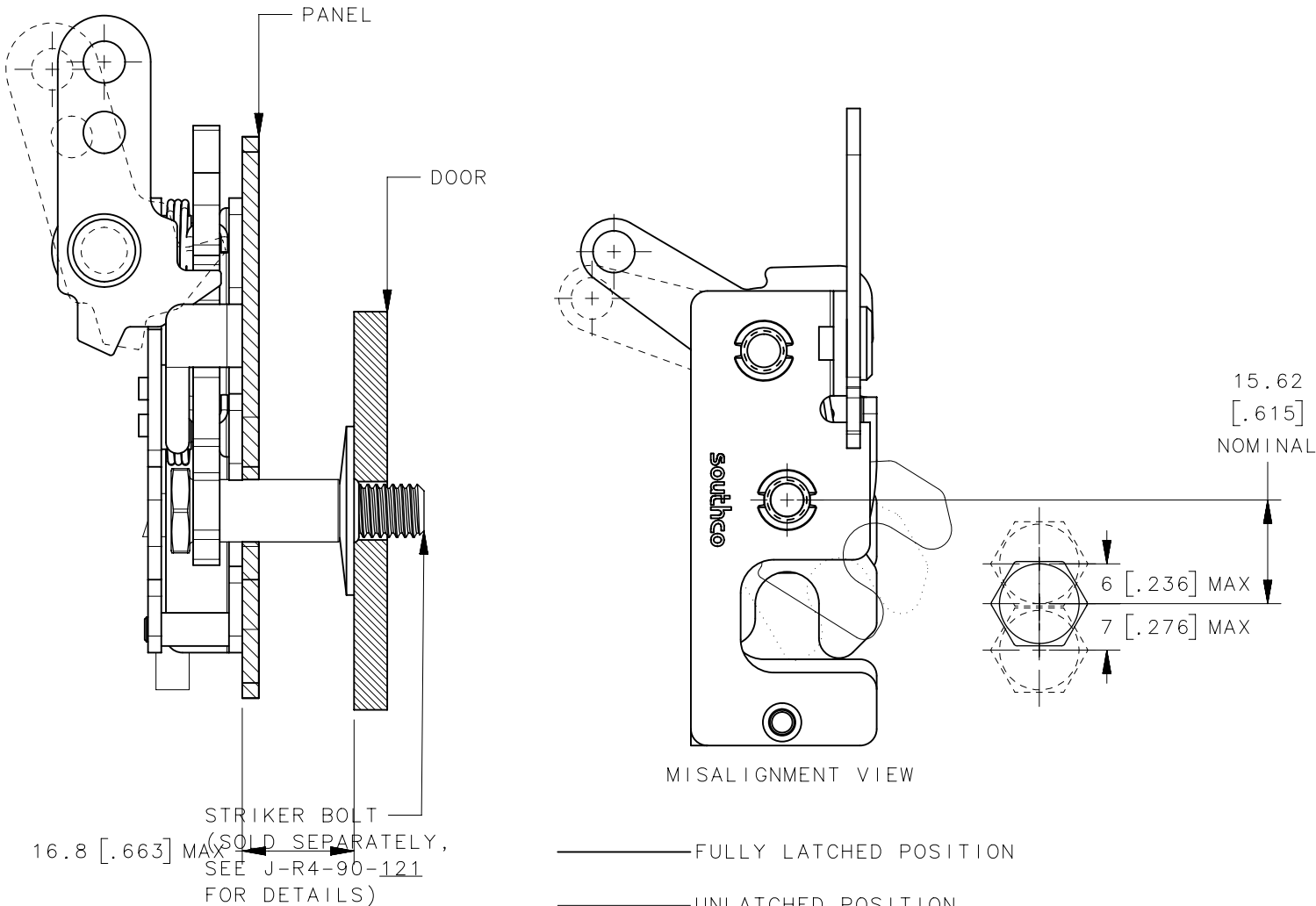
<u>STAGE & ACTUATION</u>	<u>MOUNTING STYLE</u>	<u>BUMPER OPTION</u>
2 - SINGLE STAGE, LEFT HAND	0 - Ø7.2 [.283] THRU	1 - STANDARD (WITHOUT BUMPER)
4 - DUAL STAGE, LEFT HAND	1 - 1/4-20 THREAD	5 - INTEGRATED BUMPER
	2 - M6x1 THREAD	

THIRD ANGLE PROJECTION	MILLIMETERS [IN]		 CONNECT · CREATE · INNOVATE		
					TOLERANCES UNLESS OTHERWISE NOTED ALL DIMENSIONS WITHOUT TOLERANCES ARE FOR REFERENCE ONLY.
PROPRIETARY ITEM EXCEPT FOR USES EXPRESSLY GRANTED IN WRITING, INFORMATION DISCLOSED HEREON IS CONFIDENTIAL AND ALL RIGHTS, PATENT AND OTHERWISE, ARE RESERVED BY SOUTHCO, INC.	PER ASME Y14.5M-1994	DESCRIPTION R4-10 ROTARY LATCH, BOTTOM PULL WITH SECONDARY TRIGGER, BUMPER OPTIONAL, LH	SIZE B	SYSTEM NX	DWG NO. J-R4-10-7L
		DRAWN BY CMG/DGJ	DATE 11JUN2015	SCALE 1:1	SHEET 1 OF 3

REVISION HISTORY			
REV	DATE	BY	DESCRIPTION
D	26AUG2015	CMG/DGJ	PRN: P2015-1747

STANDARD

WITH INTEGRATED BUMPER



NOTES:

- A. THE TOLERANCE BETWEEN THE LATCH AND STRIKER BOLT ASSUMES A NON-RIGID DOOR INSTALLATION THAT WILL ALLOW THE DOOR TO MOVE INTO THE NOMINAL POSITION DURING LATCHING. RIGID DOORS MUST HAVE THE STRIKER INSTALLED PER THE PANEL PREPARATION RECOMMENDATION.
- B. THE MISALIGNMENT VIEW ASSUMES THE LATCH IS CONNECTED TO A PERFECTLY RIGID DOOR AND HINGE; THEREFORE, THERE IS NO DOOR AND/OR HINGE SLACK ASSOCIATED WITH THESE DIMENSIONS. THE MISALIGNMENT VIEW DOES NOT TAKE FLEXING OF THE STRIKER BOLT INTO ACCOUNT.

R4-10-X0-70X-10	Ø 7.2mm THRU	Ø 7.2 [.299]
R4-10-X1-70X-10	1/4-20 THREAD	Ø 6.8 [.268]
R4-10-X2-70X-10	M6x1 THREAD	Ø 6.4 [.252]
ASSEMBLY PART NUMBER	MOUNTING STYLE	MINIMUM PANEL HOLE

THIRD ANGLE PROJECTION			southco [®] CONNECT • CREATE • INNOVATE	
MILLIMETERS [IN]				
TOLERANCES UNLESS OTHERWISE NOTED	DESCRIPTION R4-10 ROTARY LATCH, BOTTOM PULL WITH SECONDARY TRIGGER, BUMPER OPTIONAL, LH			
ALL DIMENSIONS WITHOUT TOLERANCES ARE FOR REFERENCE ONLY.	SIZE B	SYSTEM NX	DWG NO. J-R4-10-7L	
PROPRIETARY ITEM EXCEPT FOR USES EXPRESSLY GRANTED IN WRITING, INFORMATION DISCLOSED HEREON IS CONFIDENTIAL AND ALL RIGHTS, PATENT AND OTHERWISE, ARE RESERVED BY SOUTHCO, INC.	PER ASME Y14.5M-1994	DRAWN BY CMG/DGJ	DATE 11JUN2015	SCALE 1:1 SHEET 2 OF 3

6

5

4

3

2

1

REVISION HISTORY			
REV	DATE	BY	DESCRIPTION
D	26AUG2015	CMG/DGJ	PRN: P2015-1747

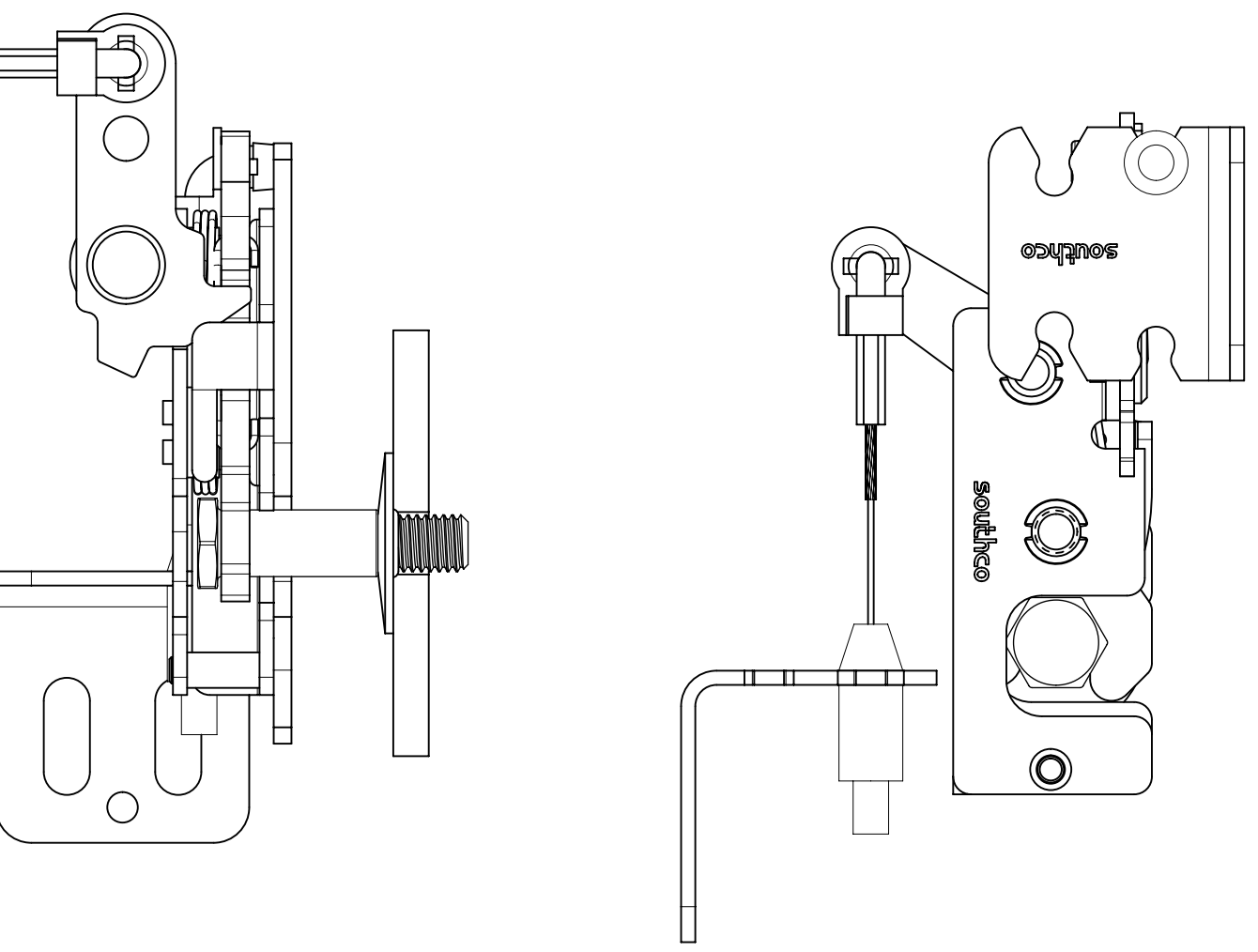
CABLE ASSEMBLY
SEE J-AC-C

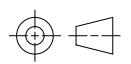

SEE NOTE B

SEE NOTE C

OPTIONAL CABLE ASSEMBLY
MOUNTING BRACKET
PART NUMBER AC-900-02-10
(SOLD SEPARATELY)

NOTES:
 A. FOR OPTIONAL LINK RETAINERS (SOLD SEPARATELY), SEE J-R4-0-43922
 B. FOR LEVER RETAINER ONLY, USE R4-0-43922
 C. FOR TRIGGER RETAINER ONLY, USE R4-0-43922-2



THIRD ANGLE PROJECTION 		 CONNECT • CREATE • INNOVATE		
MILLIMETERS [IN]				
TOLERANCES UNLESS OTHERWISE NOTED		DESCRIPTION R4-10 ROTARY LATCH, BOTTOM PULL WITH SECONDARY TRIGGER, BUMPER OPTIONAL, LH		
ALL DIMENSIONS WITHOUT TOLERANCES ARE FOR REFERENCE ONLY.		SIZE B	SYSTEM NX	DWG NO. J-R4-10-7L
PER ASME Y14.5M-1994		DRAWN BY CMG/DGJ	DATE 11JUN2015	SCALE 1:1
<small>PROPRIETARY ITEM EXCEPT FOR USES EXPRESSLY GRANTED IN WRITING, INFORMATION DISCLOSED HEREON IS CONFIDENTIAL AND ALL RIGHTS, PATENT AND OTHERWISE, ARE RESERVED BY SOUTHCO, INC.</small>		SHEET 3 OF 3		

6

5

4

3

2

1