

DATE	DRAWN	CHKD	SCALE
18JUN92	JGK		3/4

ASSEMBLY PART NUMBERS AND DESCRIPTION

PANEL THICKNESS	MED. LEVER GRIP RANGE*	BLACK ASSEMBLY WITH PLATED STEEL HARDWARE
1-11	14-29	C5-11-25
11-21		C5-12-25
21-31		C5-13-25

* SHORT LEVER GRIP RANGE AVAILABLE FROM 1 TO 14 MILLIMETERS. REFERENCE DRAWING NUMBER J-C5-1

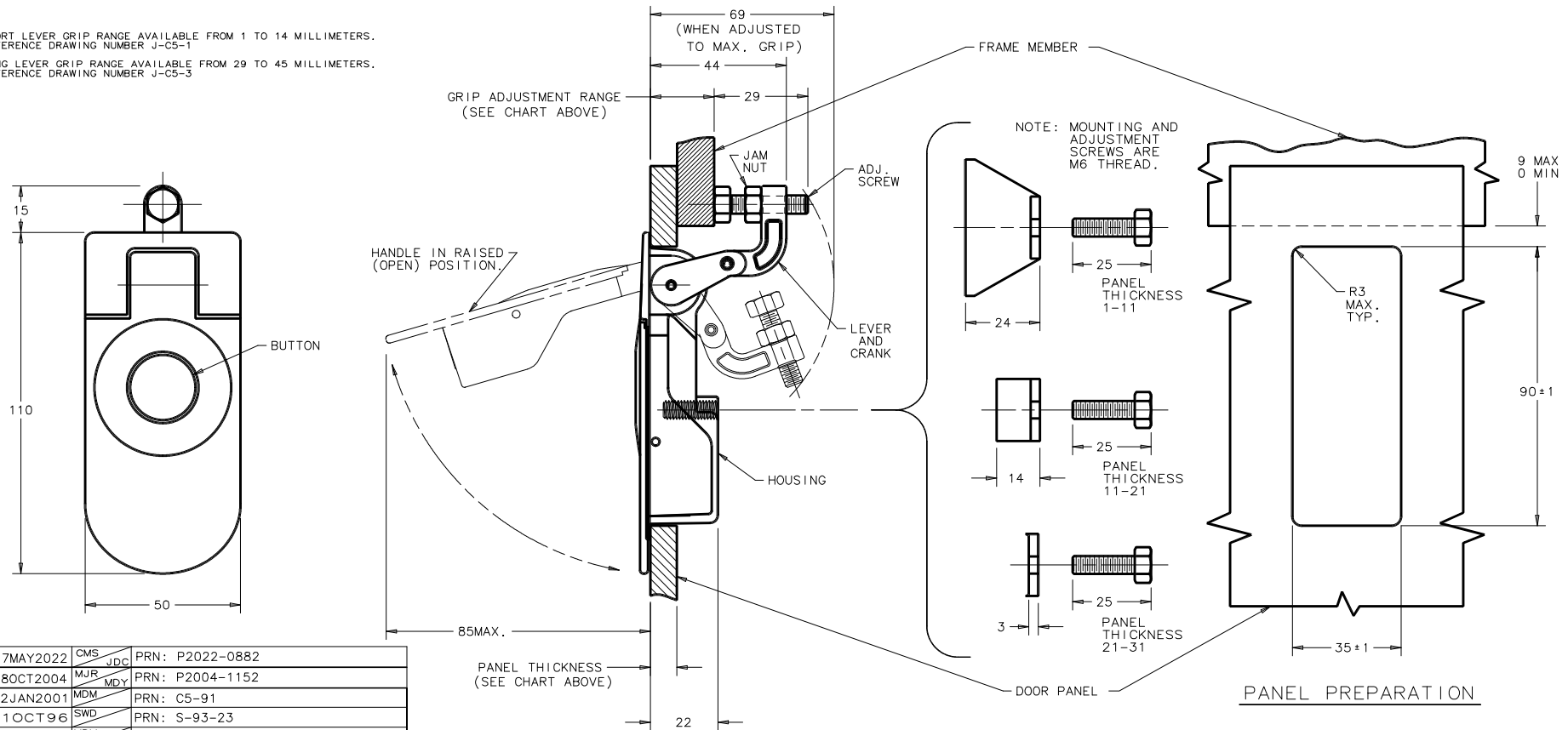
LONG LEVER GRIP RANGE AVAILABLE FROM 29 TO 45 MILLIMETERS. REFERENCE DRAWING NUMBER J-C5-3

MATERIAL AND FINISH

LATCH ASSEMBLY CONSISTS OF:
 HOUSING, HANDLE AND BUTTON:
 DIE CAST ZINC, BLACK POWDER COAT WITH STEEL HARDWARE
 LEVER AND CRANK: DIE CAST ZINC, COATED WITH CLEAR CHEMICAL PROTECTIVE FILM.
 BLACK TORSION SPRING: 303 STAINLESS STEEL, PASSIVATED.
 ROLL PINS: 420 STAINLESS STEEL, PASSIVATED.
 O-RINGS: BUNA-N RUBBER, NATURAL.

HARDWARE CONSISTS OF:

MOUNTING BRACKET
 MOUNTING SCREW
 ADJUSTING SCREW
 JAM NUT
 1010 STEEL, ZINC PLATED WITH SEALED CHROMATE.



PANEL PREPARATION

THIRD ANGLE PROJECTION,
 ALL DIMENSIONS ARE MILLIMETERS.

REV	DATE	DRAWN	REVISIONS
E	17MAY2022	CMS JDC	PRN: P2022-0882
D	08OCT2004	MJR MDT	PRN: P2004-1152
C	02JAN2001	MDM	PRN: C5-91
B	11OCT96	SWD	PRN: S-93-23
A	19JUL95	MDM	PRN: C5-21