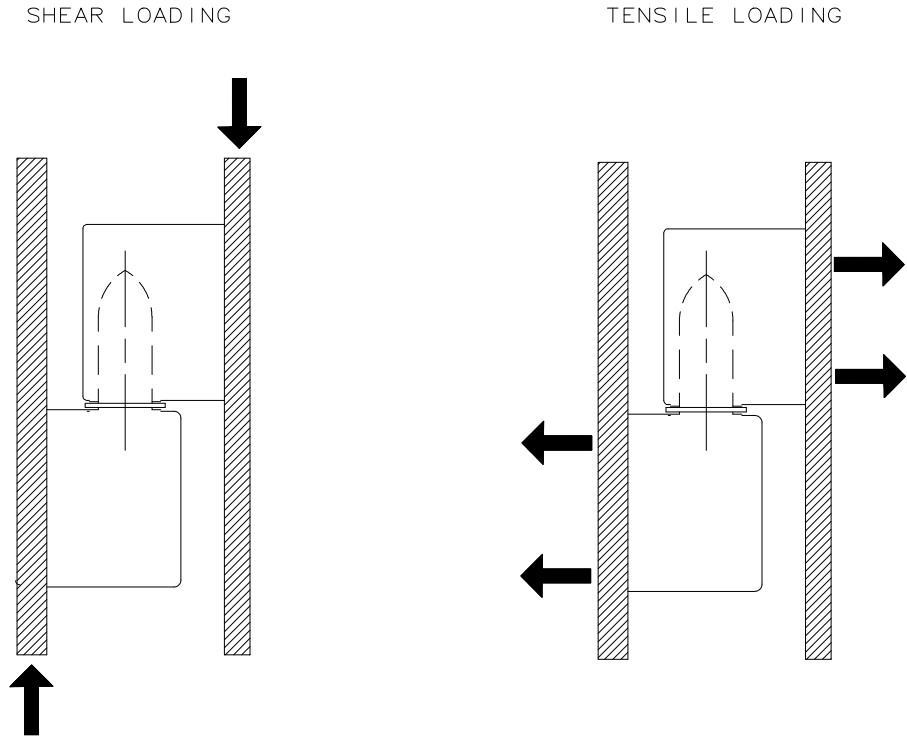


|                 |           |           |            |     |   |                 |              |      |              |                             |                        |                 |
|-----------------|-----------|-----------|------------|-----|---|-----------------|--------------|------|--------------|-----------------------------|------------------------|-----------------|
| <b>southco®</b> | REV       | DATE      | DRAWN/CHKD | GDM | DESCRIPTION<br>UPDATE FORMAT<br>PRN: P2014-1595 | DATE<br>7-14-82 | DRAWN<br>RJB | CHKD | SCALE<br>NTS | DRAWING NUMBER<br>TD-96-1-J | THIRD ANGLE PROJECTION | PAPER SIZE<br>A |
|                 | C         | 09APR2002 |            |     |   |                 |              |      |              |                             |                        |                 |
| D               | 08AUG2014 | CMS/BGL   |            |     |   |                 |              |      |              |                             |                        |                 |

No. 96 NYLON LIFT-OFF HINGES

SOUTHCO PERFORMANCE GUIDELINES  
 THE PERFORMANCE GUIDELINES SHOWN ON THIS PAGE ARE SUPPLIED AS A GENERAL GUIDE ONLY, AS CONDITIONS VARY WITH EACH APPLICATION AND METHOD OF INSTALLATION. STRENGTH DATA GIVEN IS FOR FAILURE OF THE PRODUCT OR FOR SUFFICIENT DEFORMATION TO MAKE PRODUCT INOPERABLE. NO SAFETY FACTOR HAS BEEN APPLIED IT IS RECOMMENDED THAT THE USER REQUEST A PRODUCT SAMPLE FOR TESTING TO DETERMINE THE SUITABILITY OF THE PRODUCT FOR THE PURPOSE INTENDED AND USER'S PARTICULAR APPLICATION.

MOUNTING SCREW TIGHTENING TORQUE NOT TO EXCEED 2.8 NEWTON METERS (25 INCH-POUNDS) FOR 5.1 mm (.20 INCH) THREAD ENGAGEMENT. MAXIMUM TIGHTENING TORQUE WILL BE LESS FOR LOWER THREAD ENGAGEMENT.



| PART NUMBER | WORKING TENSILE LOAD | ULTIMATE TENSILE LOAD | WORKING SHEAR LOAD | ULTIMATE SHEAR LOAD |
|-------------|----------------------|-----------------------|--------------------|---------------------|
| 300 SERIES  | 890 N (200 LBS)      | 1330 N (300 LBS)      | 1560 N (350 LBS)   | 2450 N (550 LBS)    |
| 400 SERIES  | 2000 N (450 LBS)     | 2670 N (600 LBS)      | 2000 N (450 LBS)   | 5040 N (1130 LBS)   |

- ① WORKING LOAD is the maximum force that the product will withstand without affecting the operation or appearance of the product.
- ② Average ULTIMATE LOAD causes failure of the product or sufficient deformation to make the product inoperable.