

NOTES:

- A. OPERATION: 195° TURN OF KEY CAUSES SHAFT TO ROTATE 75° THEN PULL UP 6.4.
 B. NUTS AND LOCKWASHERS SHIPPED UNASSEMBLED IN BAG WITH LATCH ASSEMBLY
 C. INSTALLATION:
 1. INSERT LATCH INTO HOLE IN DOOR. CHECK FOR PROPER ORIENTATION AND OPERATION WITH PAWL.
 2. PLACE THE MOUNTING LOCKWASHER AND NUT (27 ACROSS FLATS) ONTO THE HOUSING. THE MAXIMUM RECOMMENDED TIGHTENING TORQUE IS 28 Nm.
 3. PLACE THE JAM NUTS (17 ACROSS FLATS), LOCKWASHERS AND PAWL ONTO THE SHAFT. WITH LATCH IN THE CLOSED POSITION, ADJUST JAM NUTS TO POSITION THE PAWL AT THE CORRECT GRIP. THE MAXIMUM RECOMMENDED TIGHTENING TORQUE IS 20 Nm.
 4. CAUTION: ADJUST PAWL SO THAT NO MORE THAN 7.9 Nm TORQUE ON DRIVER IS REQUIRED TO CLOSE LATCH.
 D. OPERATED BY EUROPEAN STANDARD RAILWAY KEY.
 E. FOR GASKETED APPLICATIONS USE SOUTHCO GASKET PART NUMBER E5-17, ORDER SEPARATELY.

southco

PROPRIETARY ITEM - EXCEPT FOR USES EXPRESSLY GRANTED IN WRITING INFORMATION DISCLOSED HEREON IS CONFIDENTIAL AND ALL RIGHTS PATENT AND OTHERWISE ARE RESERVED BY SOUTHCO, INC.

**WISE-ACTION LATCH-INTERNATIONAL
 SERIES 8mm RAILWAY DRIVER**

| DATE | DRAWN | CHKD | SCALE | DRAWING NUMBER |
|---------|-------|------|-------|----------------|
| 31JUL95 | DAZ | | 1:1 | J-E3-111 |

| REV | DATE | DRAWN/CHKD | DESCRIPTION | ITEM | PART NUMBER | GRIP RANGE | PAWL OFF-SET |
|-----|-----------|------------|-----------------|----------------|-------------|------------|--------------|
| A | 11OCT96 | SWD | PRN: S-93-23 | LATCH ASSEMBLY | E3-111-1X | 11.4-27.2 | NONE |
| B | 11MAY98 | JGK | PRN: E3-689 | LATCH ASSEMBLY | E3-111-2X | 25.4-41.1 | 13.7 |
| C | 22JUN99 | SCK/JSS | PRN: E3-806 | LATCH ASSEMBLY | E3-111-3X | 38.9-54.6 | 27.4 |
| D | 28APR2003 | RLR/AJH | PRN: P2003-0112 | | | | |
| E | 01MAY2007 | BWR/RLR | PRN: P2007-0587 | | | | |
| F | 03DEC2013 | CMS/MGG | PRN: P2013-2338 | | | | |
| G | 29JUN2015 | CMS/MGG | PRN: P2015-1259 | | | | |
| H | 14JAN2021 | CMS/CTG | PRN: P2021-0104 | | | | |

MILLIMETERS

ALL DIMENSIONS WITHOUT TOLERANCES ARE FOR REFERENCE ONLY.

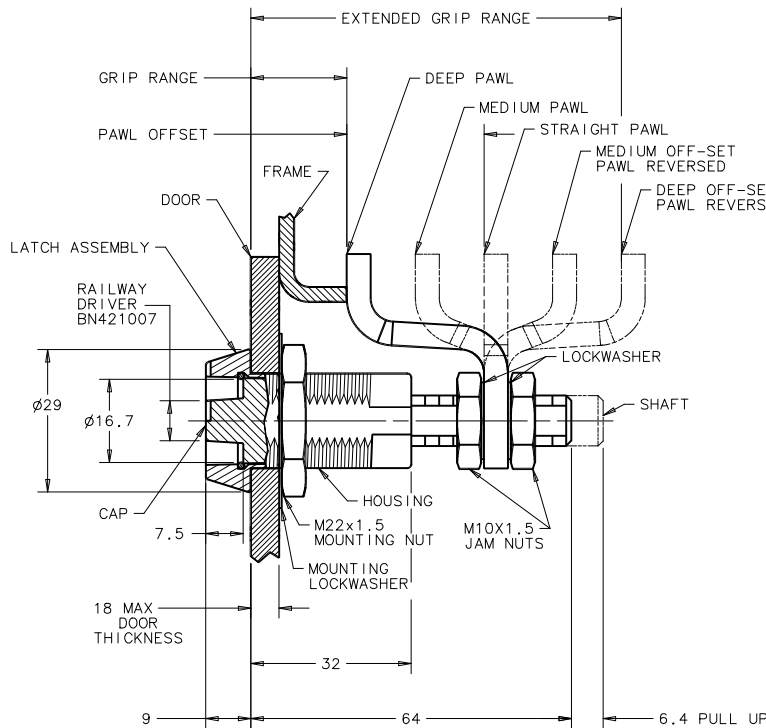
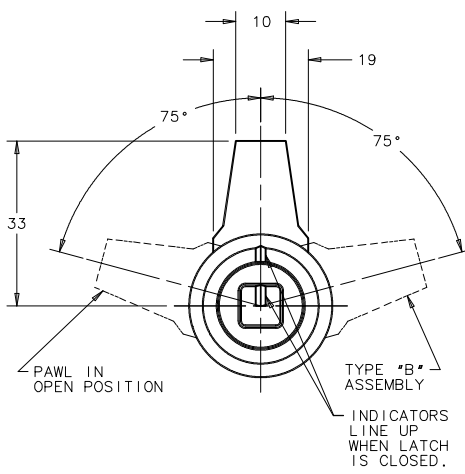


THE ABOVE PART NUMBERS ARE TYPE *A* (TURN CLOCKWISE TO LATCH) FOR TYPE *B* ASSEMBLES (TURN COUNTERCLOCKWISE TO LATCH), CHANGE THE THIRD DIGIT OF THE PART NUMBER FROM 1 TO 22. EXAMPLE: E3-2211-15

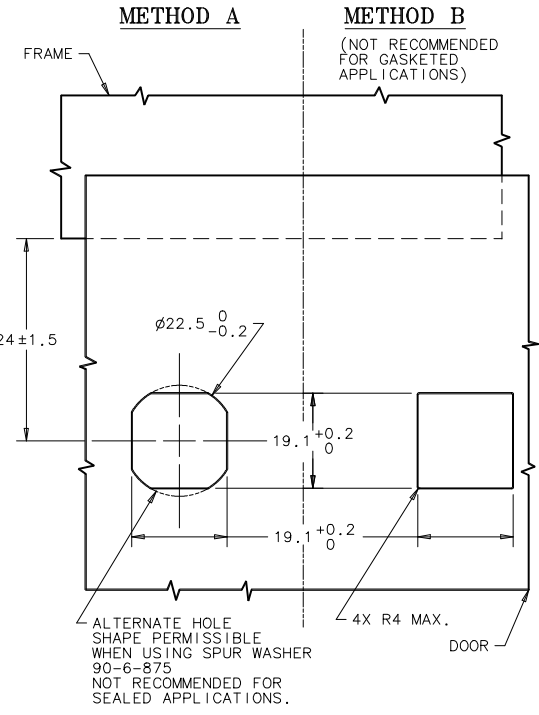
X FINISH TABLE

- 1 - BRIGHT CHROME PLATE
- 4 - CARDINAL WHITE POWDER COAT
- 5 - BLACK POWDER COAT
- 6 - LIGHT GREY POWDER COAT
- 7 - SATIN SILVER POLYESTER POWDER COAT
- 8 - SILVER METALLIC URETHANE POWDER COAT

| COMPONENT | MATERIAL | FINISH |
|---------------------|---------------------|---|
| HOUSING | DIE CAST ZINC | SEE FINISH TABLE |
| CAP | DIE CAST ZINC | SEE FINISH TABLE |
| RETAINER | 302 STAINLESS STEEL | BLACK OXIDE OR NATURAL |
| SPRING | 302 STAINLESS STEEL | NATURAL |
| O-RING | BUNA-N | NATURAL |
| SLEEVE | 1075 STEEL | ZINC IMMERSION COATING † |
| CAM | 1075 STEEL | ZINC IMMERSION COATING † |
| SHAFT | LOW CARBON STEEL | ZINC ALLOY PLATE BRIGHT CHROMATE, PLUS SEALER |
| PIN | 1008 STEEL | ZINC PLATE PLUS CHROMATE DIP, YELLOW |
| PAWL | 1010 STEEL | ZINC ALLOY PLATE BRIGHT CHROMATE, PLUS SEALER |
| JAM NUTS (2) | LOW CARBON STEEL | ZINC ALLOY PLATE BRIGHT CHROMATE, PLUS SEALER |
| LOCKWASHERS (2) | SPRING STEEL | ZINC ALLOY PLATE BRIGHT CHROMATE, PLUS SEALER |
| MOUNTING NUT | DIE CAST ZINC | ZINC PLATE BRIGHT CHROMATE |
| MOUNTING LOCKWASHER | SPRING STEEL | ZINC ALLOY PLATE BRIGHT CHROMATE, PLUS SEALER |



DOOR PREPARATION



† TM - METAL COATINGS INTERNATIONAL, INC.