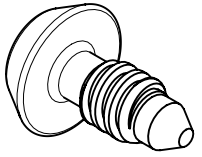
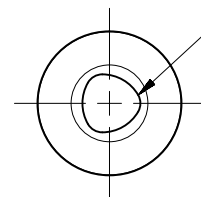


PART NUMBER	A	B	C	D
09-T-102	0.100	0.197	0.422	0.547
09-T-103	0.150	0.147		
09-T-202	0.100	0.322	0.547	0.672
09-T-203	0.150	0.272		
09-T-204	0.200	0.222		
09-T-205	0.250	0.172		
09-T-302	0.100	0.447	0.672	0.797
09-T-303	0.150	0.397		
09-T-304	0.200	0.347		
09-T-305	0.250	0.297		
09-T-307	0.350	0.197		
09-T-402	0.100	0.572	0.797	0.922
09-T-403	0.150	0.522		
09-T-404	0.200	0.472		
09-T-405	0.250	0.422		
09-T-407	0.350	0.322		
09-T-409	0.450	0.222		

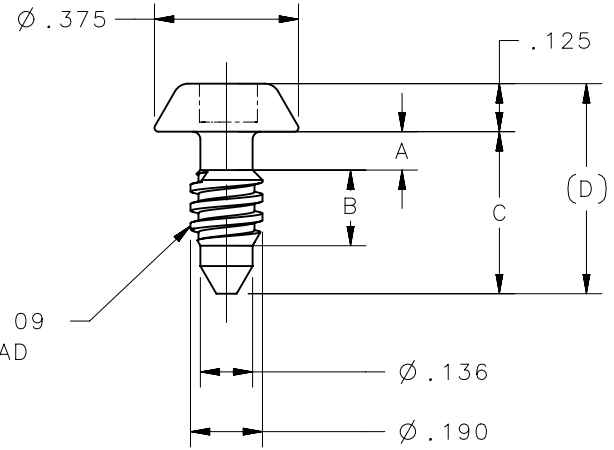
REVISION HISTORY			
REV	DATE	BY	DESCRIPTION
E	15FEB2018	HPD/DMS	PRN: P2018-0417



SCALE 2:1



NO. 4 SIZE TOOLHEAD RECESS:  
OPERATE WITH A SOUTHCO KEY  
NO. 29-90-214-10 OR DRIVER  
NO.29-90-114-10.



SOUTHCO NO. 09  
SQUARE THREAD

09-T-XXX	SCREW	LOW CARBON STEEL	CASE HARDENED	ZINC PLATE, CHROMATE PLUS SEALER
PART NUMBER	TYPE OF COMPONENT	MATERIAL	HEAT TREATMENT	FINISH

THIRD ANGLE PROJECTION		 CONNECT • CREATE • INNOVATE		
INCHES [MM]				
TOLERANCES UNLESS OTHERWISE NOTED		DESCRIPTION NO. 09 TOOLHEAD SCREW		
SURFACE AREA		ALL DIMENSIONS WITHOUT TOLERANCES ARE FOR REFERENCE ONLY.		
VOLUME		SIZE A	SYSTEM NX	DWG NO. J-09-T-1
PROPRIETARY ITEM <small>EXCEPT FOR USES EXPRESSLY GRANTED IN WRITING, INFORMATION DISCLOSED HEREON IS CONFIDENTIAL AND ALL RIGHTS, PATENT AND OTHERWISE, ARE RESERVED BY SOUTHCO, INC.</small>		PER ASME Y14.5M-1994	DRAWN BY JHV	DATE 25APR1988
		SCALE 2:1	SHEET 1 OF 1	