

6

5

4

3

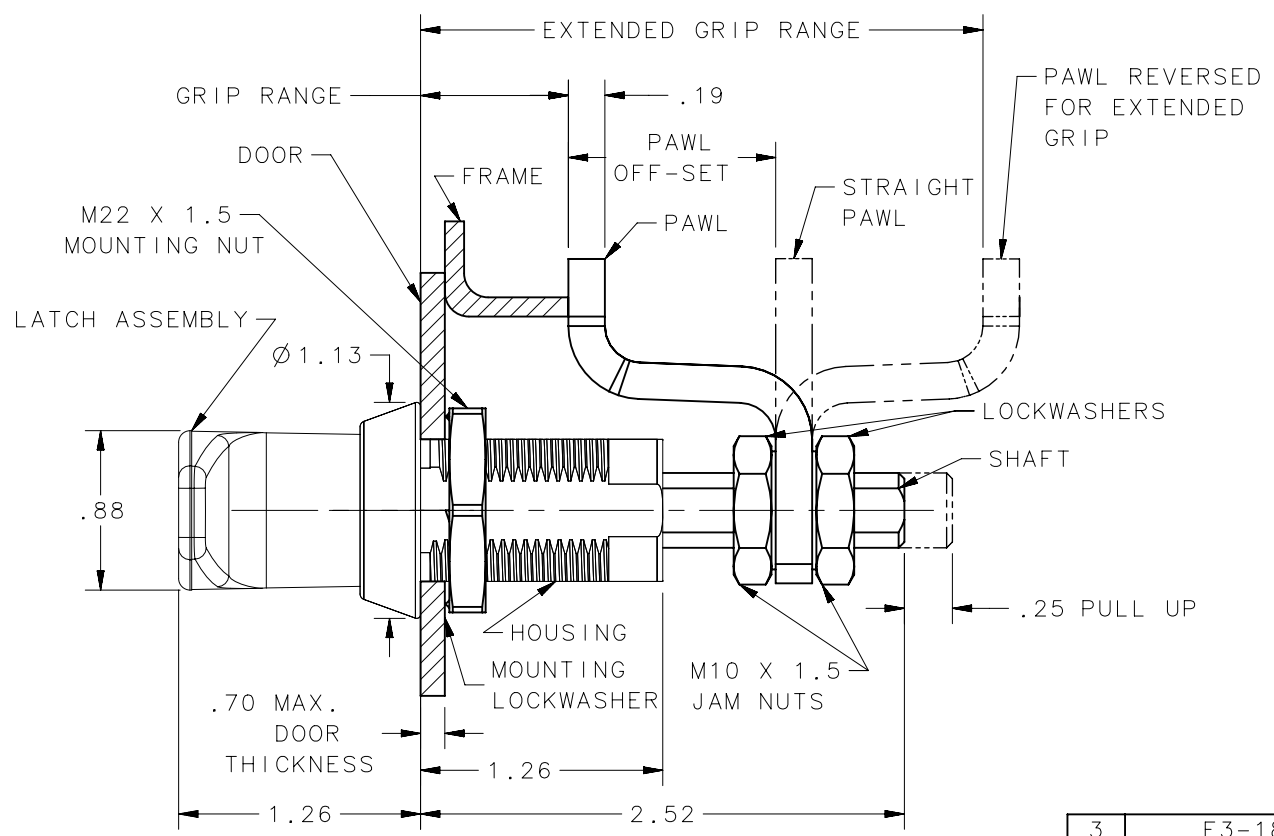
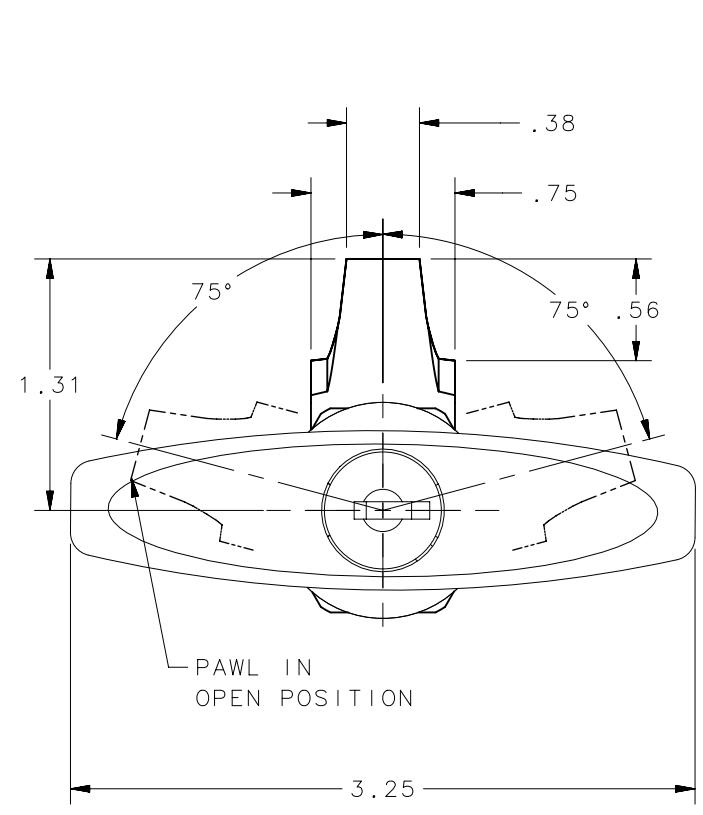
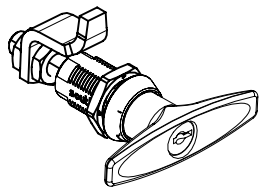
2

1

REVISION HISTORY			
REV	DATE	BY	DESCRIPTION
K	11OCT2021	SSG/CBI	PRN: P2021-1969

NOTES:

- A. OPERATION: 195° TURN OF HANDLE CAUSES PAWL TO ROTATE 75° THEN PULL UP 0.25.
- B. PAWL, NUTS AND LOCKWASHERS SHIPPED UNASSEMBLED IN BAG WITH LATCH ASSEMBLY.
- C. INSTALLATION:
  1. INSERT LATCH INTO HOLE IN DOOR. CHECK FOR PROPER ORIENTATION AND OPERATION OF PAWL.
  2. INSTALL USING LOCKWASHER AND MOUNTING NUT (27mm ACROSS FLATS). MAX. TIGHTENING TORQUE 250 in-lb.
  3. INSTALL JAM NUT, LOCKWASHER, PAWL, LOCKWASHER, AND JAM NUT ON SHAFT. ADJUST JAM NUTS TO POSITION PAWL AT CORRECT GRIP (WITH LATCH CLOSED). TIGHTEN JAM NUTS (180 in-lb MAX. TORQUE) USING TWO 17mm WRENCHES.
- D. CAUTION: ADJUST PAWL SO THAT NO MORE THAN 70 in-lb TORQUE ON KEY IS REQUIRED TO CLOSE LATCH.
- E. † TM - METAL COATINGS INTERNATIONAL, INC.
- F. THE BELOW PART NUMBERS ARE TYPE "A" (TURN CLOCKWISE TO LATCH). FOR TYPE "B" ASSEMBLIES (TURN COUNTER-CLOCKWISE TO LATCH), CHANGE THE THIRD DIGIT OF THE PART NUMBER FROM 1 TO 22. EXAMPLE: E3-223-15



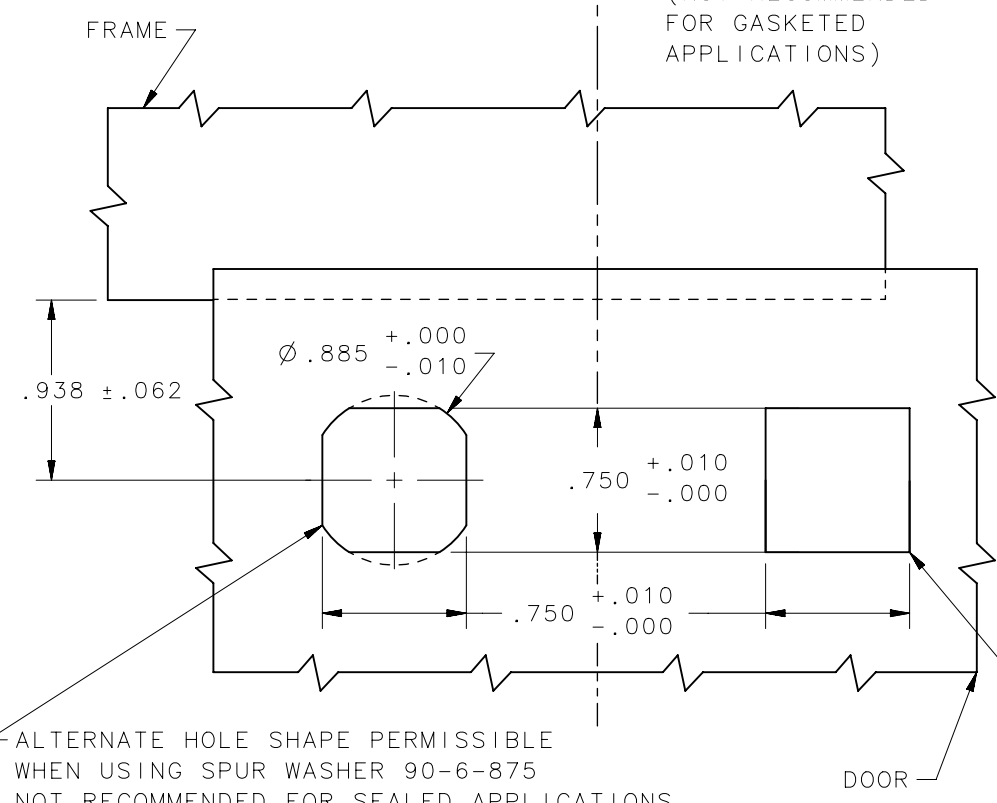
NO.	PART NUMBER	GRIP RANGE	EXTENDED GRIP RANGE	PAWL OFFSET
3	E3-18-3Y	1.53-2.15	NONE	NONE
2	E3-18-2Y	1.00-1.62	2.07-2.69	0.54
1	E3-18-1Y	0.45-1.07	2.61-3.00	1.08

DOOR PREPARATION

METHOD A

METHOD B

(NOT RECOMMENDED FOR GASKETED APPLICATIONS)



SEE TABLE FOR GRIP RANGE AND PAWL OFFSET

E3-18-XY

\*Y\* = FINISH TABLE

- 1 = BRIGHT CHROME PLATE
- 4 = CARDINAL WHITE POWDER COAT
- 5 = BLACK POWDER COAT
- 7 = SATIN SILVER POLYESTER POWDER COAT

NO.	PART NUMBER	QTY	TYPE OF COMPONENT	MATERIAL	FINISH
18	-	2	KEYS	BRASS	NATURAL
17	-	1	LOCK SLIDE	DIE CAST ZINC	CHEMICAL PROTECTIVE FILM
16	-	1	LOCK EXTENDER	DIE CAST ZINC	CHEMICAL PROTECTIVE FILM
15	-	1	MOUNTING LOCKWASHER	SPRING STEEL	ZINC PLATE, CHROMATE PLUS SEALER
14	-	1	MOUNTING NUT	DIE CAST ZINC	ZINC PLATE BRIGHT CHROMATE
13	-	2	LOCKWASHERS	SPRING STEEL	ZINC PLATE, CHROMATE PLUS SEALER
12	-	2	JAM NUTS	LOW CARBON STEEL	ZINC PLATE, CHROMATE PLUS SEALER
11	-	1	PAWL	1010 STEEL	ZINC PLATE, CHROMATE PLUS SEALER
10	-	1	PIN	1008 STEEL	ZINC PLATE PLUS CHROMATE DIP, YELLOW
9	-	1	SHAFT	LOW CARBON STEEL	ZINC PLATE, CHROMATE PLUS SEALER
8	-	1	CAM	1075 STEEL	ZINC IMMERSION COATING †
7	-	1	SLEEVE	1075 STEEL	ZINC IMMERSION COATING †
6	-	1	O-RING	BUNA-N	NATURAL
5	-	1	SPRING	302 STAINLESS STEEL	NATURAL
4	-	1	RETAINER	302 STAINLESS STEEL	NATURAL
3	-	1	LOCK PLUG	DIE CAST ZINC AND BRASS	SEE FINISH TABLE
2	-	1	HANDLE	DIE CAST ZINC	SEE FINISH TABLE
1	-	1	HOUSING	DIE CAST ZINC	SEE FINISH TABLE
-	E3-18-XY	-	LATCH ASSEMBLY	-	-

THIRD ANGLE PROJECTION

INCHES [MM]

TOLERANCES UNLESS OTHERWISE NOTED

ALL DIMENSIONS WITHOUT TOLERANCES ARE FOR REFERENCE ONLY.

PROPRIETARY ITEM EXCEPT FOR USES EXPRESSLY GRANTED IN WRITING, INFORMATION DISCLOSED HEREON IS CONFIDENTIAL AND ALL RIGHTS, PATENT AND OTHERWISE, ARE RESERVED BY SOUTHCO, INC.

PER ASME Y14.5M-1994

**southco**  
CONNECT • CREATE • INNOVATE

DESCRIPTION: VISE-ACTION LATCH-INTERNATIONAL SERIES LOCKING T-HANDLE

SIZE: B SYSTEM: NX DWG NO.: J-E3-18

DRAWN BY: RES DATE: 19JUL1990 SCALE: 1:1 SHEET: 1 OF 1

6

5

4

3

2

1