

REV	DATE	DRAWN/CHKD	DESCRIPTION
A	03MAR2003	AJH/FHS	RELEASED FOR PRODUCTION
B	03JUN2003	DLH/AJH	PRN: P2003-0436
C	11AUG2003	DLH/AJH	PRN: P2003-0679
D	24OCT2003	AJH/MJS	PRN: P2003-0941

**MATERIAL AND FINISH:**  
 KNOB: PC/ABS UL94 V0 RATED, FLAME RETARDANT; TRIARYLPHOSPHATE (DOES NOT CONTAIN BROMINATED, CHLORINATED, OR HALOGENATED ADDITIVES).  
 SCREW: HEAT TREATED LOW CARBON STEEL ZINC PLATE, CHROMATE PLUS SEALER  
 STANDOFF: ALUMINUM, NATURAL  
 SPRING: 300 SERIES STAINLESS STEEL, PASSIVATED  
 WASHER: 300 SERIES STAINLESS STEEL, PASSIVATED

**NOTES:**  
 A. GATE NOT ORIENTED WITH RECESS OR FRAME BREAK.  
 B. FLASH HEIGHT GREATER THAN 0.3 NOT ACCEPTABLE.  
 C. SURFACE IMPERFECTIONS: INSPECT PARTS FROM 0.6 METERS FOR 3 SECONDS. FOUR SURFACE IMPERFECTIONS MAX PER PART. SURFACE IMPERFECTIONS NO LARGER THAN 2.3mm IN DIAMETER, HEIGHT, OR WIDTH.  
 D. KNOB AND SCREW ARE SPRING LOADED OUTWARD, AS SHOWN BELOW.  
 E. SEE DRAWING J-4C-2-M4 FOR KNURLED HANDBOOK OFFERINGS.

SCREW RECESS	PART NUMBER	SCREW PROJECTION		PANEL THICKNESS		B	L
		P-1	P-2	A MIN	A MAX		
No. 2 PHILLIPS	4C-PH-M4-2T1-DEEE	2.3	7.3	-	0.8	2.3	3.2
	4C-PH-M4-3T1-DEEE	3.8	8.8	-	0.8	2.3	3.2
	4C-PH-M4-4T1-DEEE	5.4	10.4	-	0.8	2.3	3.2
	4C-PH-M4-2T2-DEEE	2.3	7.3	-	1.6	2.4	3.9
	4C-PH-M4-3T2-DEEE	3.8	8.8	0.8	1.6	3.1	4.0
	4C-PH-M4-4T2-DEEE	5.4	10.4	0.8	1.6	3.1	4.0
	4C-PH-M4-3T3-DEEE	3.8	8.8	1.6	2.4	3.9	4.8
	4C-PH-M4-4T3-DEEE	5.4	10.4	1.6	2.4	3.9	4.8
	4C-PH-M4-3T4-DEEE	3.8	8.8	2.4	3.2	4.7	5.6
	4C-PH-M4-4T4-DEEE	5.4	10.4	2.4	3.2	4.7	5.6
	4C-PH-M4-4T5-DEEE	5.4	10.4	3.2	4.0	5.5	6.4
	4C-PH-M4-4T6-DEEE	5.4	10.4	4.0	4.8	6.3	7.2
T25 TORX®	4C-TX-M4-2T1-DEEE	2.3	7.3	-	0.8	2.3	3.2
	4C-TX-M4-3T1-DEEE	3.8	8.8	-	0.8	2.3	3.2
	4C-TX-M4-4T1-DEEE	5.4	10.4	-	0.8	2.3	3.2
	4C-TX-M4-2T2-DEEE	2.3	7.3	-	1.6	2.4	3.9
	4C-TX-M4-3T2-DEEE	3.8	8.8	0.8	1.6	3.1	4.0
	4C-TX-M4-4T2-DEEE	5.4	10.4	0.8	1.6	3.1	4.0
	4C-TX-M4-3T3-DEEE	3.8	8.8	1.6	2.4	3.9	4.8
	4C-TX-M4-4T3-DEEE	5.4	10.4	1.6	2.4	3.9	4.8
	4C-TX-M4-3T4-DEEE	3.8	8.8	2.4	3.2	4.7	5.6
	4C-TX-M4-4T4-DEEE	5.4	10.4	2.4	3.2	4.7	5.6
	4C-TX-M4-4T5-DEEE	5.4	10.4	3.2	4.0	5.5	6.4
	4C-TX-M4-4T6-DEEE	5.4	10.4	4.0	4.8	6.3	7.2
No. 2 PHILLIPS/SLOT	4C-PS-M4-2T1-DEEE	2.3	7.3	-	0.8	2.3	3.2
	4C-PS-M4-3T1-DEEE	3.8	8.8	-	0.8	2.3	3.2
	4C-PS-M4-4T1-DEEE	5.4	10.4	-	0.8	2.3	3.2
	4C-PS-M4-2T2-DEEE	2.3	7.3	0.8	1.6	3.1	4.0
	4C-PS-M4-3T2-NEEE	3.8	8.8	0.8	1.6	3.1	4.0
	4C-PS-M4-4T2-NEEE	5.4	10.4	0.8	1.6	3.1	4.0
	4C-PS-M4-3T3-NEEE	3.8	8.8	1.6	2.4	3.9	4.8
	4C-PS-M4-4T3-NEEE	5.4	10.4	1.6	2.4	3.9	4.8
	4C-PS-M4-3T4-DEEE	3.8	8.8	2.4	3.2	4.7	5.6
	4C-PS-M4-4T4-DEEE	5.4	10.4	2.4	3.2	4.7	5.6
	4C-PS-M4-4T5-DEEE	5.4	10.4	3.2	4.0	5.5	6.4
	4C-PS-M4-4T6-DEEE	5.4	10.4	4.0	4.8	6.3	7.2
T25 TORX®/SLOT	4C-TS-M4-2T1-DEEE	2.3	7.3	-	0.8	2.3	3.2
	4C-TS-M4-3T1-DEEE	3.8	8.8	-	0.8	2.3	3.2
	4C-TS-M4-4T1-DEEE	5.4	10.4	-	0.8	2.3	3.2
	4C-TS-M4-2T2-DEEE	2.3	7.3	0.8	1.6	3.1	4.0
	4C-TS-M4-3T2-NEEE	3.8	8.8	0.8	1.6	3.1	4.0
	4C-TS-M4-4T2-NEEE	5.4	10.4	0.8	1.6	3.1	4.0
	4C-TS-M4-3T3-NEEE	3.8	8.8	1.6	2.4	3.9	4.8
	4C-TS-M4-4T3-NEEE	5.4	10.4	1.6	2.4	3.9	4.8
	4C-TS-M4-3T4-DEEE	3.8	8.8	2.4	3.2	4.7	5.6
	4C-TS-M4-4T4-DEEE	5.4	10.4	2.4	3.2	4.7	5.6
	4C-TS-M4-4T5-DEEE	5.4	10.4	3.2	4.0	5.5	6.4
	4C-TS-M4-4T6-DEEE	5.4	10.4	4.0	4.8	6.3	7.2

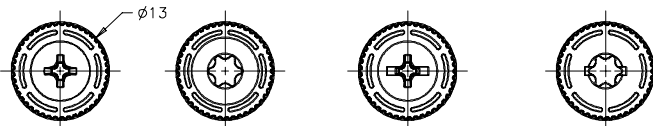
MILLIMETERS  
 ALL DIMENSIONS WITHOUT TOLERANCES ARE FOR REFERENCE ONLY.



SEE NOTE E

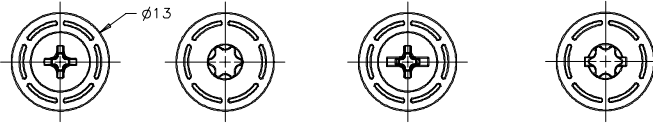
SEE NOTE E

### KNURLED KNOBS (SCALE 1.5:1)



No. 2 PHILLIPS RECESS T25 TORX® RECESS No. 2 PHILLIPS/SLOT RECESS T25 TORX®/SLOT RECESS

### NON-KNURLED KNOBS (SCALE 1.5:1)



No. 2 PHILLIPS RECESS T25 TORX® RECESS No. 2 PHILLIPS/SLOT RECESS T25 TORX®/SLOT RECESS

\*EEE\* KNOB COLOR

000 - BLACK

FOR ADDITIONAL COLORS SEE J-47-0-3

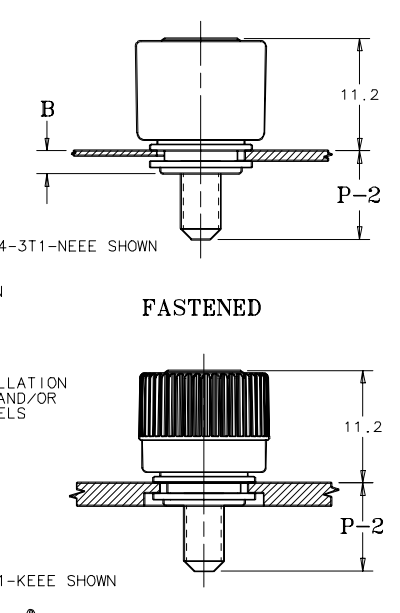
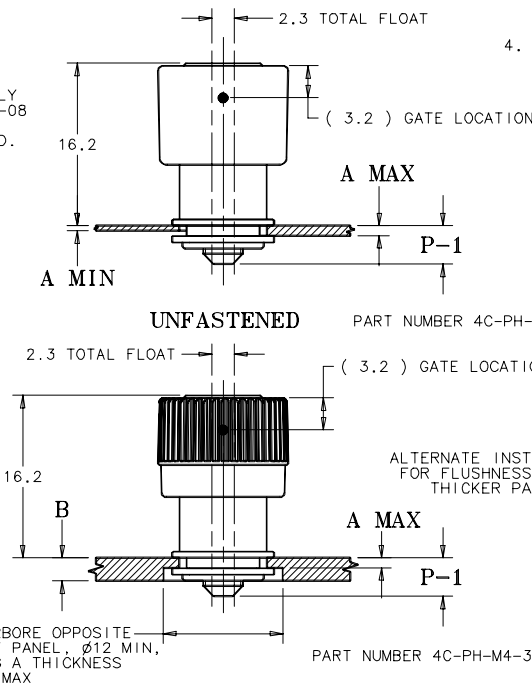
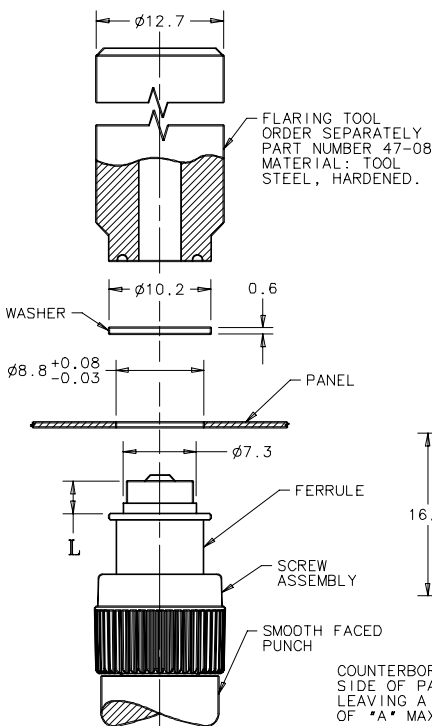
\*D\* KNOB TEXTURE

K - KNURLED

N - NON-KNURLED

### TO INSTALL FASTENER:

1. DRILL OR PUNCH HOLE AS SHOWN BELOW.
2. PLACE FERRULE INTO INSTALLATION HOLE.
3. CENTER TOOL ON THE SCREW THREAD, THEN ROLL FERRULE OVER WASHER TO CAPTIVATE THE ASSEMBLY.
4. PUNCH CANNOT TOUCH PLASTIC DURING INSTALLATION.



COUNTERBORE OPPOSITE SIDE OF PANEL, ø12 MIN, LEAVING A THICKNESS OF \*A\* MAX

PART NUMBER 4C-PH-M4-3T1-KEEE SHOWN