


REV	DATE	DRAWN/CHKD	DESCRIPTION
1	05AUG2002	AJH/MDM	PRN: P2002-0545
A	23OCT2002	AJH/VNI	PRN: P2002-0826
B	04FEB2003	AJH/VNI	PRN: P2003-0090
C	15FEB2003	AJH/DLH	PRN: P2003-0111
D	04MAR2005	PWM/AJH	PRN: P2004-1134

SCREW RECESS	PART NUMBER	SCREW PROJECTION		PANEL THICKNESS	
		P-1	P-2	MIN	MAX
No. 2 PHILLIPS/SLOT	4C-PS-M5-1PO-KEEE	0.4	5.6	0.9	-
	4C-PS-M5-2PO-KEEE	2.0	7.2		
T25 TORX®/SLOT	4C-TS-M5-1PO-KEEE	0.4	5.6		
	4C-TS-M5-2PO-KEEE	2.0	7.2		

MILLIMETERS

ALL DIMENSIONS WITHOUT TOLERANCES ARE FOR REFERENCE ONLY.



THIRD ANGLE PROJECTION

A3 PAPER SIZE

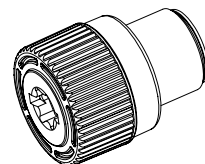
MATERIAL AND FINISH:

KNOB: PC/ABS UL94 VO RATED, FLAME RETARDANT; TRIARYLPHOSPHATE (DOES NOT CONTAIN BROMINATED, CHLORINATED, OR HALOGENATED ADDITIVES).

SCREW: HEAT TREATED LOW CARBON STEEL
ZINC PLATE, CHROMATE PLUS SEALER

STANDOFF: LOW CARBON STEEL; ZINC PLATE,
CHROMATE PLUS SEALER

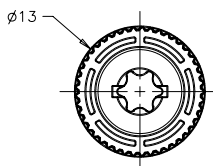
SPRING: 300 SERIES STAINLESS STEEL, PASSIVATED



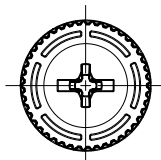
***EEE* KNOB COLOR**

000 - BLACK

FOR ADDITIONAL COLORS SEE J-47-0-3



T25 TORX®/SLOT RECESS



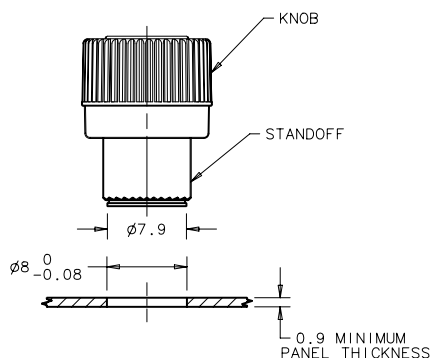
No. 2 PHILLIPS/SLOT RECESS

NOTES:

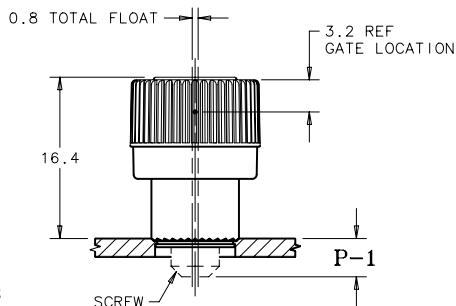
- GATE NOT ORIENTED WITH RECESS OR FRAME BREAK.
- FLASH HEIGHT GREATER THAN 0.3 NOT ACCEPTABLE.
- SURFACE IMPERFECTIONS: INSPECT PARTS FROM 0.6 METERS FOR 3 SECONDS. FOUR SURFACE IMPERFECTIONS MAX PER PART. SURFACE IMPERFECTIONS NO LARGER THAN 2.3mm IN DIAMETER, HEIGHT, OR WIDTH.
- KNOB AND SCREW ARE SPRING LOADED OUTWARD, AS SHOWN BELOW.

TO INSTALL FASTENER:

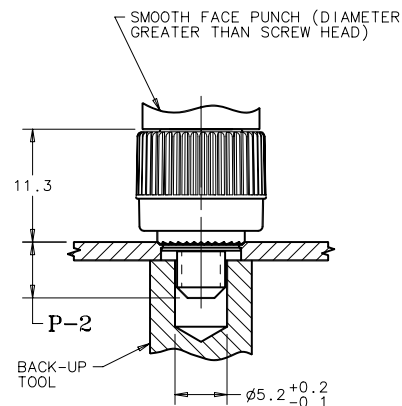
- DRILL OR PUNCH HOLE AS SHOWN BELOW.
- PLACE STANDOFF INTO INSTALLATION HOLE.
- PROVIDE SOLID BACK-UP BEHIND HOLE WITH CLEARANCE HOLE FOR SCREW AS SHOWN BELOW.
- PRESS PART INTO PANEL UNTIL RECOMMENDED LOAD IS APPLIED.
- PUNCH CANNOT TOUCH PLASTIC DURING INSTALLATION.



PANEL PREPARATION



UNFASTENED



FASTENED