

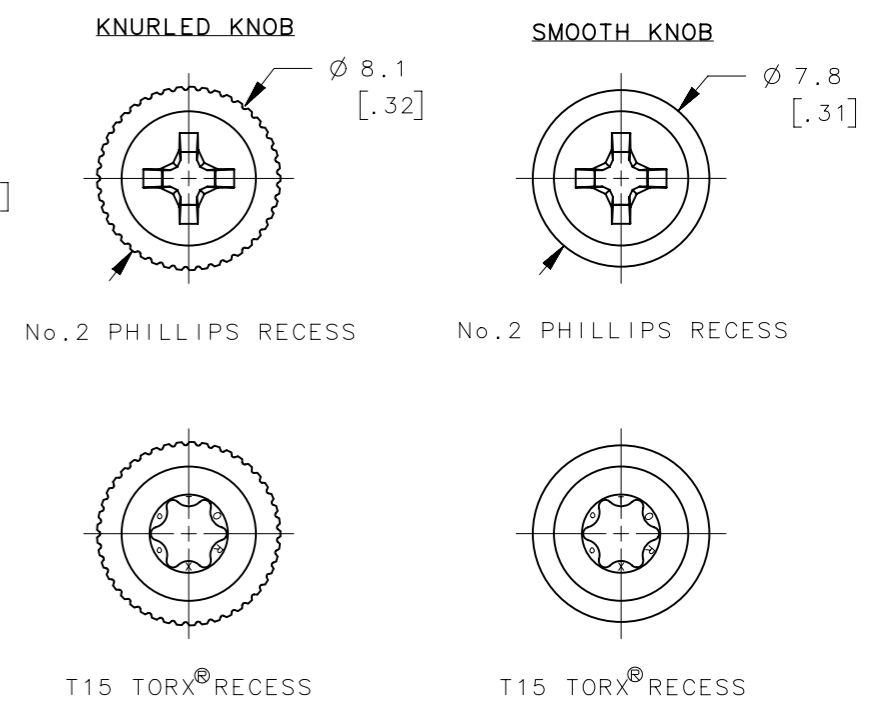
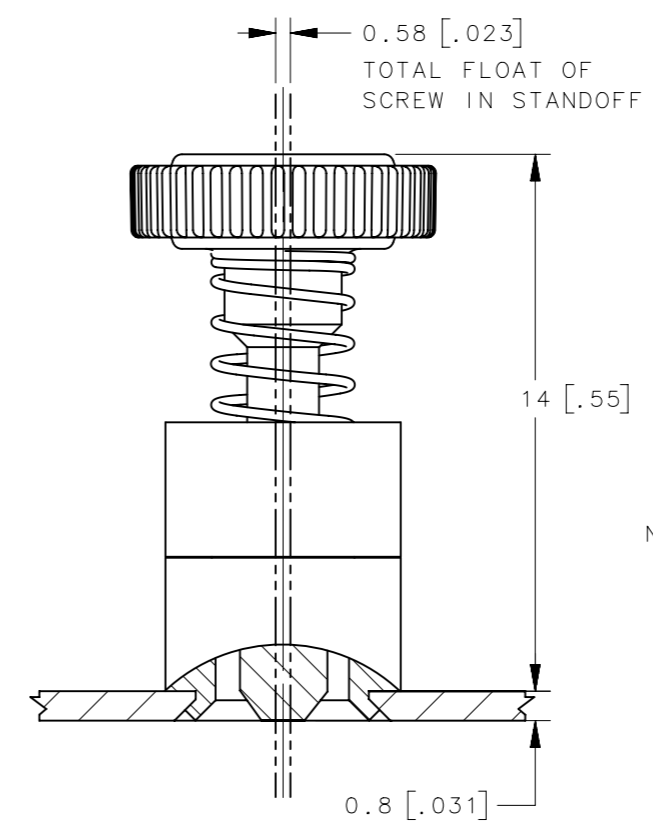
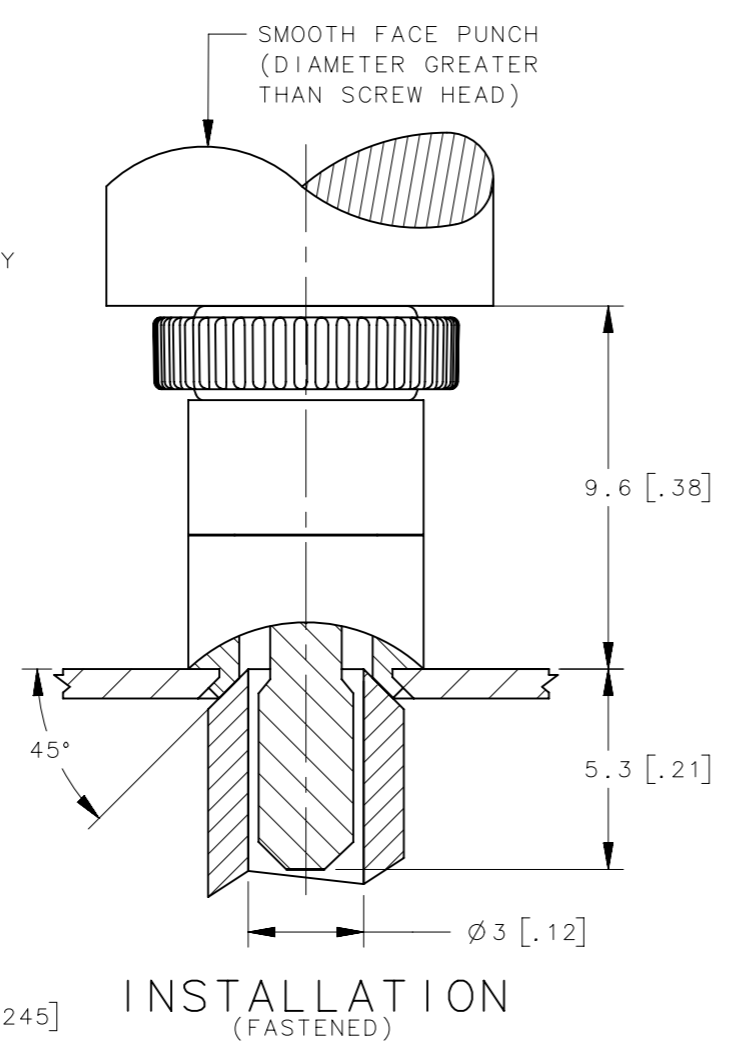
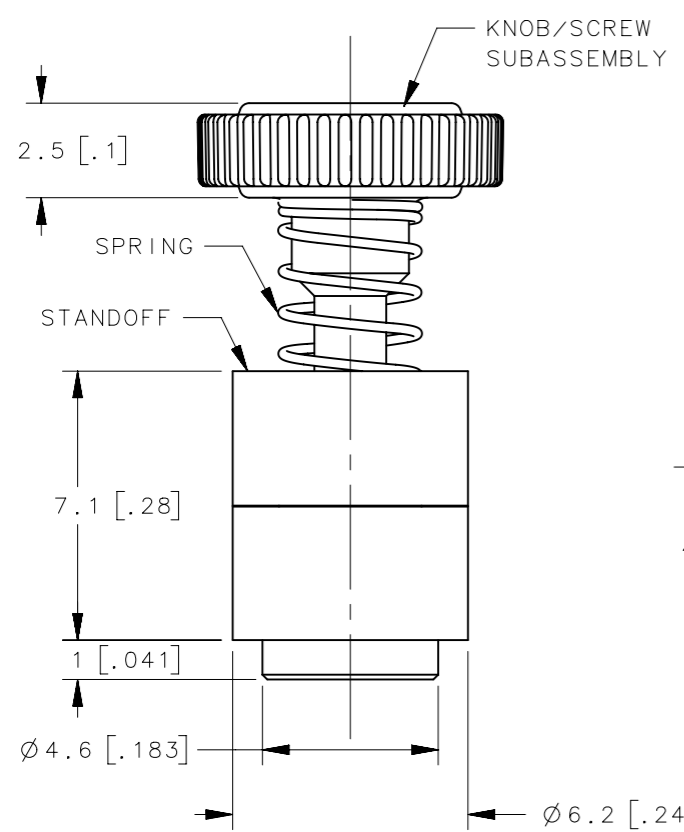
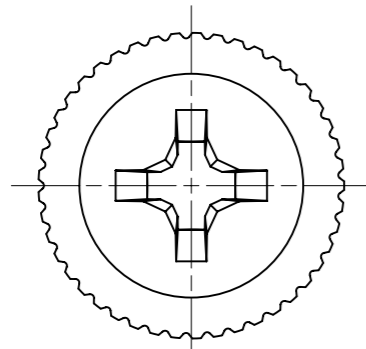
REVISION HISTORY			
REV	DATE	BY	DESCRIPTION
C	20JUN2012	BGL/TVA	PRN: P2012-0860

PART NUMBER 52-31-11-4-EEE SHOWN

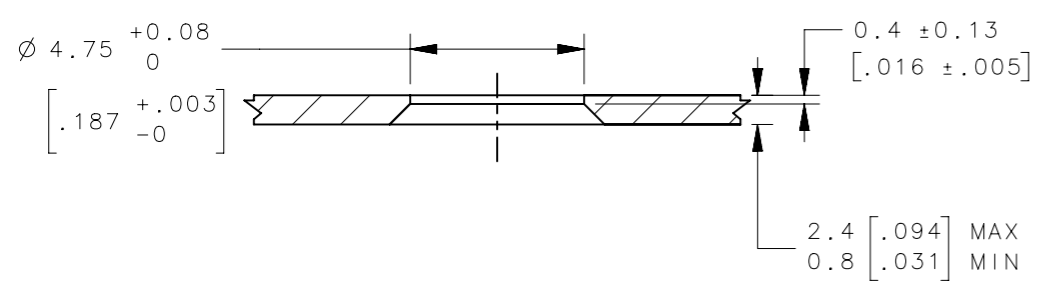


SCALE 1:1

TORX® IS A REGISTERED TRADEMARK OF ACUMENT™ INTELLECTUAL PROPERTIES, LLC.



SCALE 3:1



PANEL PREPARATION

\*EEE\* KNOB COLOR  
SEE J-47-0-3 FOR DETAIL

52-36-11-4-EEE	SMOOTH	T15 TORX®
52-35-11-4-EEE	KNURLED	T15 TORX®
52-33-11-4-EEE	SMOOTH	No. 2 PHILLIPS
52-31-11-4-EEE	KNURLED	No. 2 PHILLIPS
PART NUMBER	KNOB STYLE	SCREW RECESS

- NOTES:
- MATERIAL AND FINISH: RoHS COMPLIANT  
KNOB: PC/ABS UL94 V0 RATED, FLAME RETARDANT; TRIARYLPHOSPHATE (DOES NOT CONTAIN BROMINATED, CHLORINATED, OR HALOGENATED ADDITIVES). "EEE" IN PART NUMBER DENOTES KNOB COLOR.  
SCREW: STEEL, HARDENED, ZINC PLATE PLUS SEALER  
SPRING: 300 SERIES STAINLESS STEEL, PASSIVATED  
STANDOFF: 6000 SERIES ALUMINUM, NATURAL
  - INSTALLATION INSTRUCTIONS:
    - PREPARE THE HOLE IN THE PANEL, COUNTERSINK UNDERSIDE OF THE PANEL AS SHOWN.
    - USE SOUTHCO INSTALLATION TOOL, PART NUMBER IS 47-104, TO FLARE THIS ASSEMBLY.
    - SMOOTH FACE PUNCH SURFACE AND INSTALLATION TOOL MUST REMAIN PARALLEL DURING FLARING OF STANDOFF. ONLY USE LIGHT PRESSURE TO FLARE STANDOFF. RECOMMENDED LOAD OF 3,000N.
  - RECOMMENDED MAXIMUM TORQUE OF 60 N-cm.
  - COSMETIC SPECIFICATION: ALL SURFACES (UNLESS OTHERWISE SPECIFIED) ARE TO BE PER SOUTHCO SPECIFICATION S-121-02 AND S-121-04, CLASS B (REFER TO SECTION 1.0 FOR CROSS REFERENCE TABLE).

THIRD ANGLE PROJECTION			
MILLIMETERS [IN]			
TOLERANCES UNLESS OTHERWISE NOTED	DESCRIPTION OVERMOLD 52 ASSEMBLY, M3 THREAD FLARE-IN STYLE		
ALL DIMENSIONS WITHOUT TOLERANCES ARE FOR REFERENCE ONLY.	SIZE A3	SYSTEM NX	DWG NO. J-52-1-M3
PER ASME Y14.5M-1994	DRAWN BY JQ/TVA	DATE 04MAR2011	SCALE 5:1
PROPRIETARY ITEM EXCEPT FOR USES EXPRESSLY GRANTED IN WRITING, INFORMATION DISCLOSED HEREON IS CONFIDENTIAL AND ALL RIGHTS, PATENT AND OTHERWISE, ARE RESERVED BY SOUTHCO, INC.	SHEET 1 OF 1		