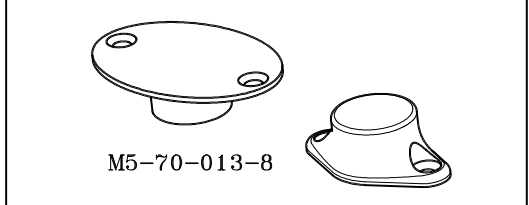
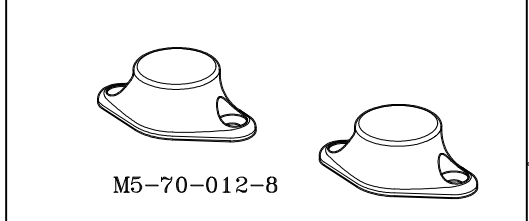
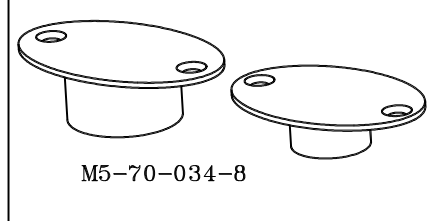
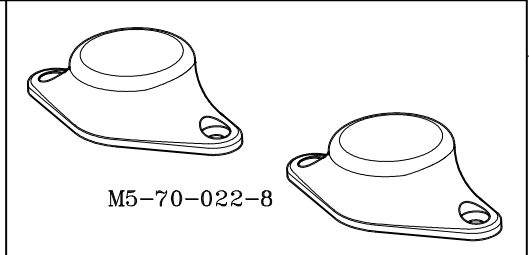
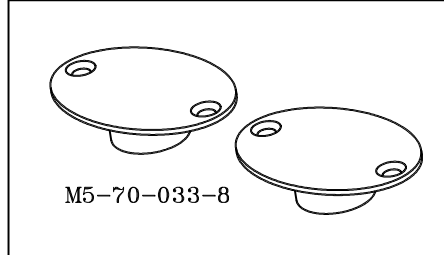
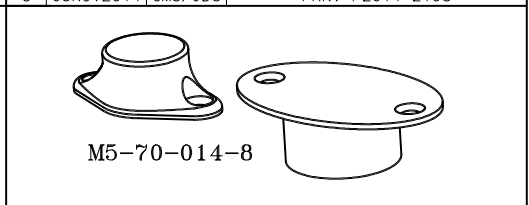
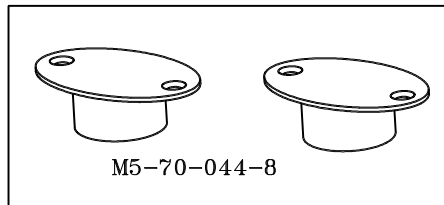
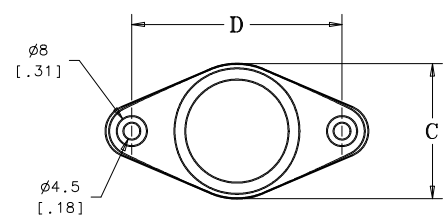


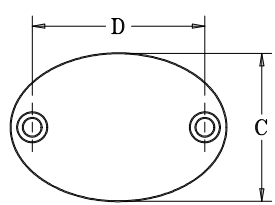
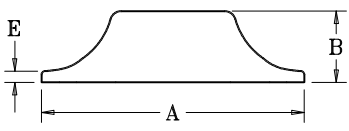
REVISION HISTORY			
REV	DATE	BY	DESCRIPTION
C	03NOV2014	CMS/JDS	PRN: P2014-2198



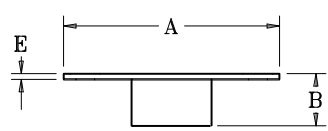
ASSEMBLY	M5-70-014-8	PROUD 20X10/FLUSH 30X15	47/57.62	1.85/2.44	15/19	.59/.75	27/40	1.06/1.57	37/47	1.46/1.85	3/1.5	.12/.06	3.8 kgs
ASSEMBLY	M5-70-013-8	PROUD 20X10/FLUSH 20X10	47/57.51	1.85/2.26	15/14	.59/.55	27/40	1.06/1.57	37/46	1.46/1.81	3/1.5	.12/.06	3.5 kgs
ASSEMBLY	M5-70-012-8	PROUD 20X10/PROUD 20X10	47	1.85	15	.59	27	1.06	34	1.34	3	.12	3.2 kgs
ASSEMBLY	M5-70-022-8	PROUD 30X15/PROUD 30X15	70	2.75	19	.75	36	1.42	56	2.2	3	.12	10.7 kgs
ASSEMBLY	M5-70-099-8	FLUSH 30X7/FLUSH 30X7	57.5	2.26	10.5	.41	39.5	1.56	46	1.81	1.5	.06	-
ASSEMBLY	M5-70-033-8	FLUSH 20X10/FLUSH 20X10	57.5	2.26	14	.55	40	1.57	46	1.81	1.5	.06	3.8 kgs
ASSEMBLY	M5-70-044-8	FLUSH 30X15/FLUSH 30X15	57.5	2.44	19	.75	40	1.57	46	1.85	1.5	.06	10.7 kgs
ASSEMBLY	M5-70-034-8	FLUSH 20X10/FLUSH 30X15	57.5/62	2.26/2.44	14/19	.55/.75	40	1.57	46/47	1.81/1.85	1.5	.06	4.4 kgs
ITEM	PART NUMBER	MAGNET SIZE	mm in		mm in		mm in		mm in		mm in		HOLDING POWER



PROUD



FLUSH



NOTES:

- A. MATERIAL AND FINISH:
- HOLDER PROUD - CF-8M STAINLESS STEEL (NOMINAL CAST EQUIVALENT OF 316 STAINLESS STEEL)
- HOLDER FLUSH - STAMPED ,316 STAINLESS STEEL MAGNET

PROPRIETARY ITEM
EXCEPT FOR USES EXPRESSLY GRANTED
IN WRITING, INFORMATION DISCLOSED
HEREIN IS CONFIDENTIAL AND ALL
RIGHTS, PATENT AND OTHERWISE,
ARE RESERVED BY SOUTHCO, INC.

THIRD ANGLE PROJECTION

MILLIMETERS [IN]

ALL DIMENSIONS WITHOUT TOLERANCES ARE FOR REFERENCE ONLY.

PER ASME Y14.5M-1994

southco
CONNECT · CREATE · INNOVATE

TITLE: MAGNETIC DOOR HOLDER STAINLESS STEEL

SIZE: A3 SYSTEM: IDEAS DWG NO.: J-M5-70-012

DRAWN BY: VMV/VGV DATE: 05OCT2007 SCALE: 1:1 SHEET: 1 OF 1