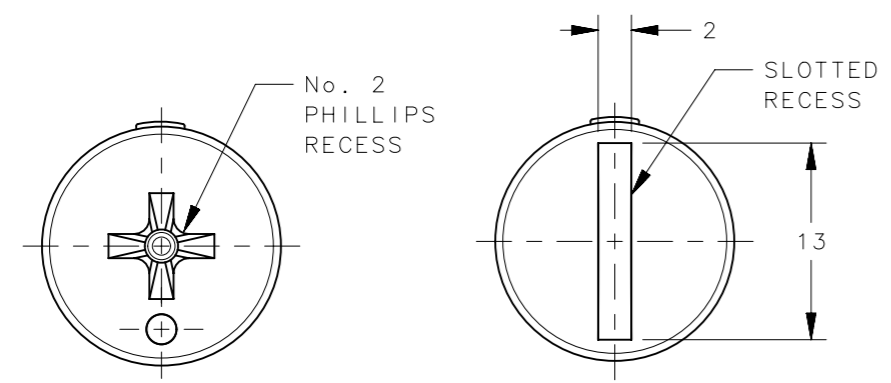
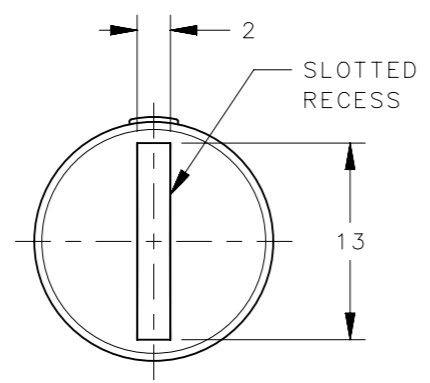


REVISION HISTORY			
REV	DATE	BY	DESCRIPTION
B	10MAY2017	LCR/CMS	PRN: P2017-1097

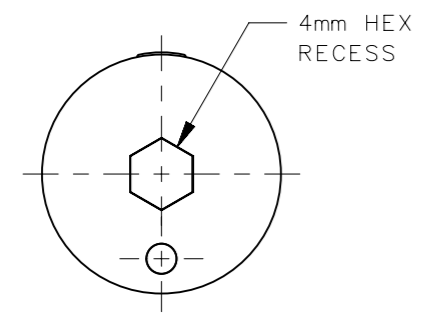
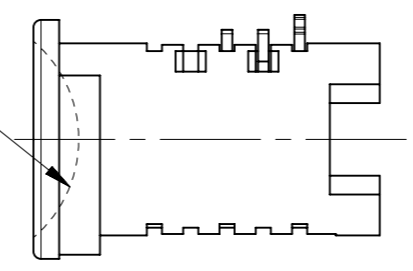


PK-0-34027-XX

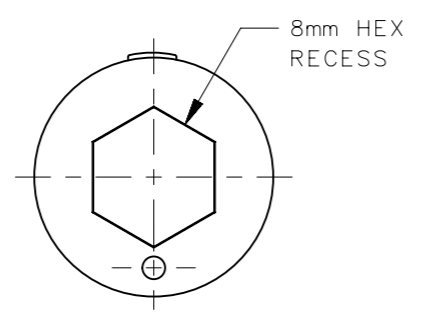


PK-0-43489-XX

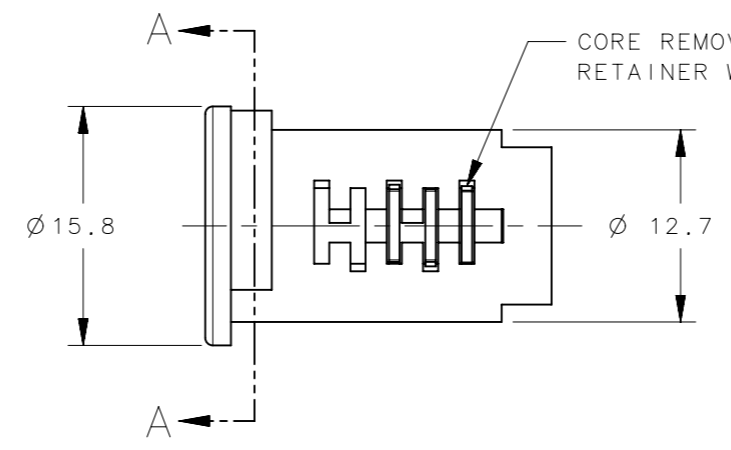
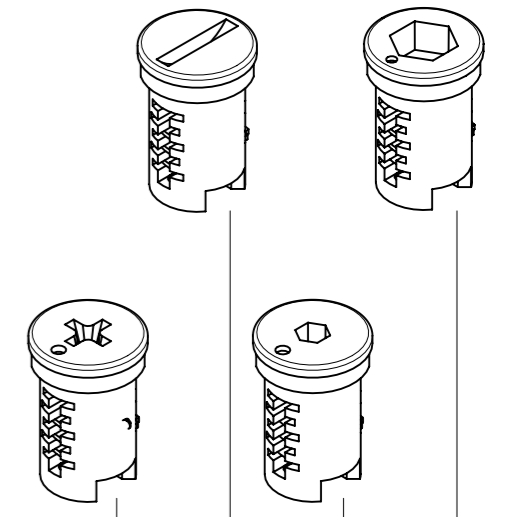
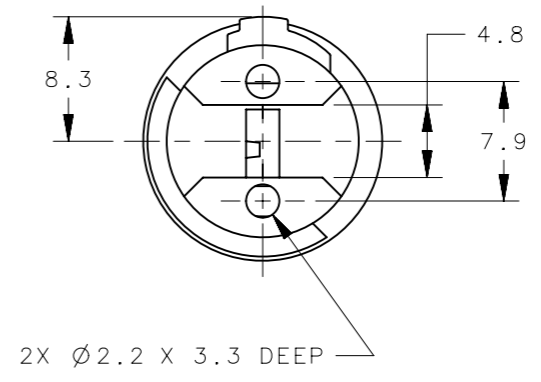
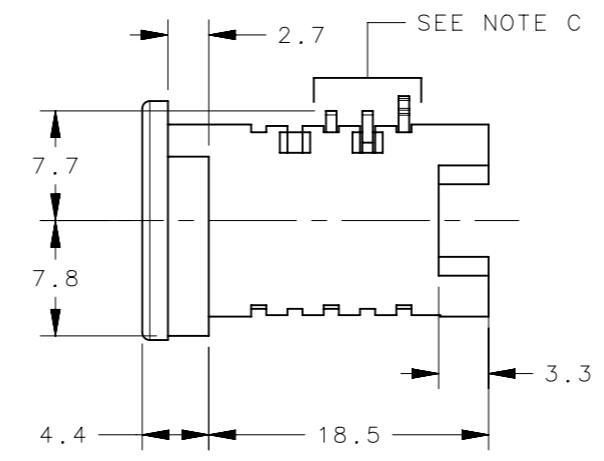
R X 3 DEEP SLOTTED RECESS



PK-0-34323-XX



PK-0-40374-XX



	PHILLIPS RECESS	SLOT RECESS	4mm HEX RECESS	8mm HEX RECESS
PK-0-34027-01	X			
PK-0-34027-50		X		
PK-0-43489-01			X	
PK-0-43489-50			X	
PK-0-34323-01				X
PK-0-34323-50				X
PK-0-40374-01				X
PK-0-40374-50				X

LOCKPLUG BODY	ZAMAK 3	FINISH							
		CHROME PLATED				BLACK POWDER COATED			
WAFERS	BRASS					X	X		
SPRING	STAINLESS STEEL					X	X		
SPRING	STAINLESS STEEL					X	X		
TYPE OF COMPONENT	MATERIAL	FINISH							

NOTES:
A. POWDER COAT IS ONLY ON HEAD OF PLUG ABOVE SECTION A-A.
B. RoHS COMPLIANT.
C. BEFORE INSTALLATION, ADD GREASE TO WAFERS FOR PROPER OPERATION. GREASE SHOULD BE COMPATIBLE WITH LOCK COMPONENT MATERIAL AND LATCH MATERIAL. GREASE VISCOSITY SHOULD BE LIGHT ENOUGH TO ALLOW WAFERS TO RETURN TO EXTENDED POSITION AFTER BEING DEPRESSED INTO LOCK BODY.

THIRD ANGLE PROJECTION				
MILLIMETERS [IN]				
SURFACE AREA	TOLERANCES UNLESS OTHERWISE NOTED	DESCRIPTION		
VOLUME	ALL DIMENSIONS WITHOUT TOLERANCES ARE FOR REFERENCE ONLY.	LOCK PLUG TOOL OPERABLE		
PROPRIETARY ITEM	PER ASME Y14.5M-1994	SIZE A3	SYSTEM NX	DWG NO. J-PK-9-TOOL-OP
EXCEPT FOR USES EXPRESSLY GRANTED IN WRITING, INFORMATION DISCLOSED HEREON IS CONFIDENTIAL AND ALL RIGHTS, PATENT AND OTHERWISE, ARE RESERVED BY SOUTHCO, INC.	DRAWN BY MJS/LCR	DATE 21MAY2013	SCALE 2:1	SHEET 1 OF 1