

southco

PROPERTY NOTICE: SOUTHCO EXPRESSLY GRANTS NO WARRANTY OR LIABILITY FOR THE INFORMATION CONTAINED HEREIN IS CONFIDENTIAL AND ALL RIGHTS, PATENT AND OTHERWISE ARE RESERVED BY SOUTHCO, INC.

REV. DATE DRAWN BY

J 17SEP2012 MJS/MSR PRN: P2012-1251

J 16JUN2020 OMS/CLB PRN: P2020-1132

REVISION

TOOL SECURED LATCH ASSEMBLY

No. 62 43-SERIES

DRAWING NUMBER J-62-47

SCALE 1:1

DRAWN BMC

CHKD

DATE 08JUN04

ALL DIMENSIONS ARE IN MILLIMETERS. ALL DIMENSIONS WITHOUT TOLERANCES ARE REFERENCE.

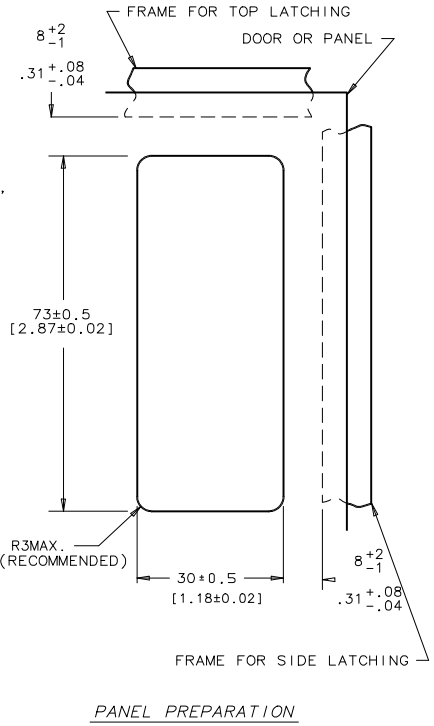
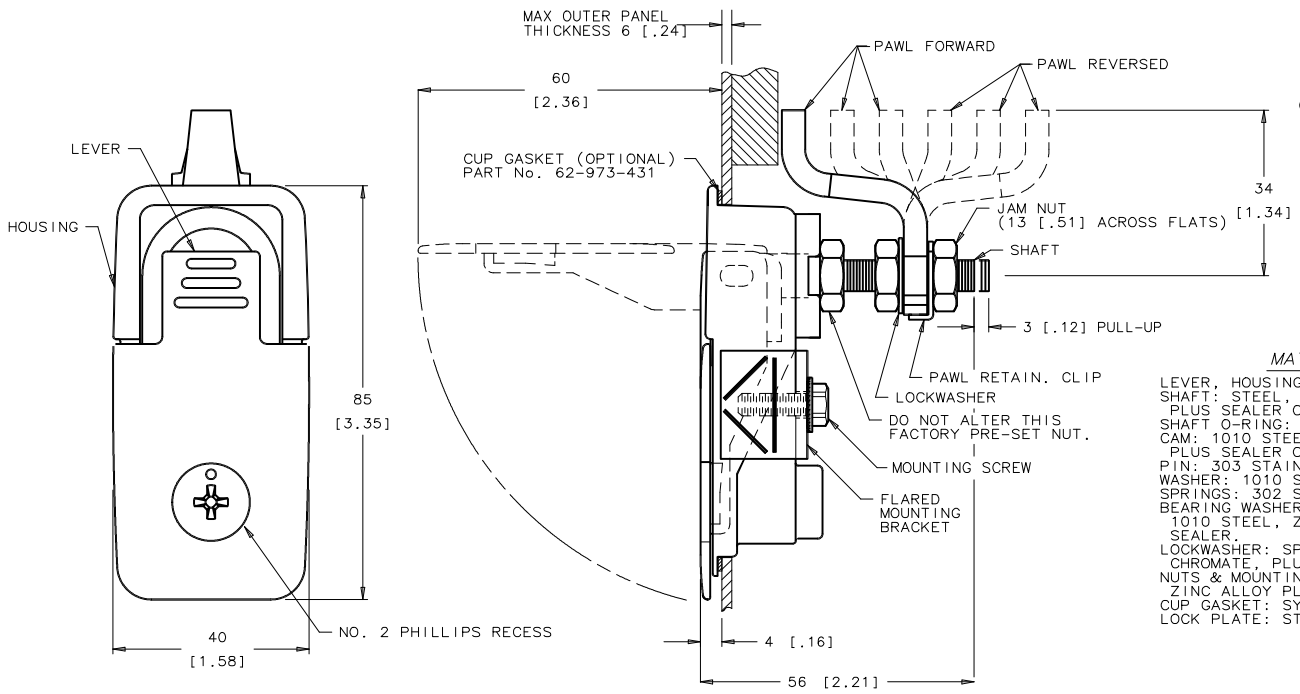
A3 PAPER SIZE

THIRD ANGLE PROJECTION

| GRIP RANGE | | INDIVIDUALLY PACKAGED ASSEMBLY PART NUMBER | | | |
|-------------------|-------------------|--|-----------------|---------------------|---------------------|
| MIN-MAX | MIN-MAX | TEXTURED CHROME | POLISHED CHROME | WHITE POWDER COATED | BLACK POWDER COATED |
| 6-16 [.24-.62] | 56-66 [2.20-2.60] | 62-43-101-2 | 62-43-111-2 | 62-43-141-2 | 62-43-151-2 |
| 16-26 [.62-1.02] | 46-56 [1.81-2.20] | 62-43-201-2 | 62-43-211-2 | 62-43-241-2 | 62-43-251-2 |
| 26-36 [1.02-1.42] | 36-46 [1.02-1.81] | 62-43-301-2 | 62-43-311-2 | 62-43-341-2 | 62-43-351-2 |

| GRIP RANGE | | BULK LAYER PACKED ASSEMBLY PART NUMBER | | | |
|-------------------|-------------------|--|-----------------|---------------------|---------------------|
| MIN-MAX | MIN-MAX | TEXTURED CHROME | POLISHED CHROME | WHITE POWDER COATED | BLACK POWDER COATED |
| 6-16 [.24-.62] | 56-66 [2.20-2.60] | 62-43-101-3 | 62-43-111-3 | 62-43-141-3 | 62-43-151-3 |
| 16-26 [.62-1.02] | 46-56 [1.81-2.20] | 62-43-201-3 | 62-43-211-3 | 62-43-241-3 | 62-43-251-3 |
| 26-36 [1.02-1.42] | 36-46 [1.02-1.81] | 62-43-301-3 | 62-43-311-3 | 62-43-341-3 | 62-43-351-3 |

- NOTES**
1. THREAD SIZE OF SHAFT IS M8 AND THE MOUNTING SCREW IS M5.
 2. THICKER PANELS REQUIRE A LONGER MOUNTING SCREW (NOT SUPPLIED).
 3. ASSEMBLE AS SHOWN AND ROTATE PAWL TO THE DESIRED LATCHING POSITION.
 4. PAWL SHOULD BE ADJUSTED TO GRIP MEASUREMENT WITH THE DOOR OPEN AND THE LEVER IN THE LATCHED POSITION. USE TWO WRENCHES TO TIGHTEN JAM NUTS.
 5. FOR MOST EFFECTIVE ENVIRONMENTAL SEALING, USE A CUP GASKET AND SEAL THE MOUNTING SCREW THREADS.



MATERIAL AND FINISH

LEVER, HOUSING AND LOCK PLUG: DIE CAST ZINC, SEE TABLE.
 SHAFT: STEEL, ZINC ALLOY PLATE BRIGHT CHROMATE, PLUS SEALER OR WITH BLACK ORGANIC COATING.
 SHAFT O-RING: SYNTHETIC RUBBER, NATURAL.
 CAM: 1010 STEEL, ZINC ALLOY PLATE BRIGHT CHROMATE, PLUS SEALER OR WITH BLACK ORGANIC COATING.
 PIN: 303 STAINLESS STEEL, PASSIVATED.
 WASHER: 1010 STEEL, ZINC PLATED BRIGHT OR BLACK OXIDE.
 SPRINGS: 302 STAINLESS STEEL, PASSIVATED.
 BEARING WASHER, PAWL, PAWL RETAINING CLIP & BRACKET: 1010 STEEL, ZINC ALLOY PLATE BRIGHT CHROMATE, PLUS SEALER.
 LOCKWASHER: SPRING STEEL, ZINC ALLOY PLATE BRIGHT CHROMATE, PLUS SEALER.
 NUTS & MOUNTING SCREW: LOW CARBON STEEL, ZINC ALLOY PLATE BRIGHT CHROMATE, PLUS SEALER.
 CUP GASKET: SYNTHETIC RUBBER, NATURAL.
 LOCK PLATE: STAINLESS STEEL, PASSIVATED OR BLACK OXIDE.