

DRAWING NUMBER
TD-07-1-J

SCALE
1.5 : 1

CHKD
ACZ

DRAWN
ALC

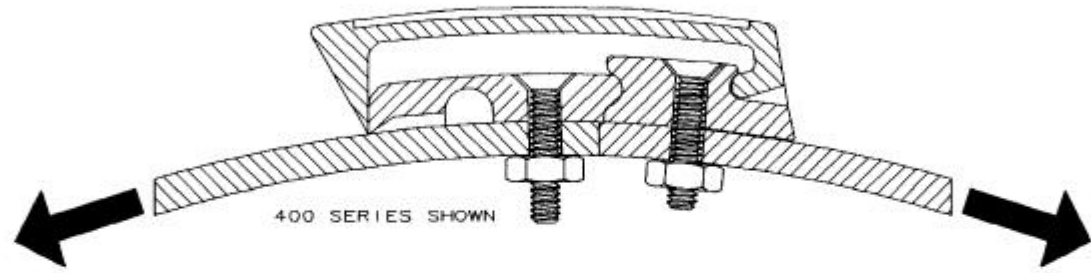
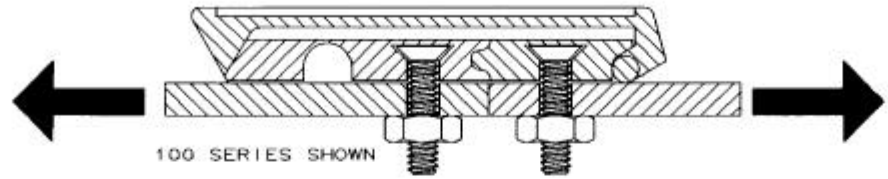
DATE
29OCT93

No. 07 LIVING HINGE DRAW LATCH

southco

GENERAL PERFORMANCE GUIDELINES

The information shown on this page was determined under one set of test conditions. Since conditions vary with each application, it is supplied as a general guide only. No safety factor has been applied. We recommend testing the product under actual application conditions to determine its suitability for the intended use.



PART SERIES	MAXIMUM RECOMMENDED WORKING LOAD	AVERAGE ULTIMATE LOAD	CYCLE LIFE	NOTES
100 SERIES	110 N (25 LBS)	220 N (50 LBS)	250,000	STANDARD LATCH
200 SERIES	445 N (100 LBS)	670 N (150 LBS)	350,000	
300 SERIES	670 N (150 LBS)	1340 N (300 LBS)	150,000	
400 SERIES	180 N (40 LBS)	330 N (75 LBS)	125,000	CURVED LATCH
500 SERIES	310 N (70 LBS)	550 N (125 LBS)	125,000	WITH SECONDARY CATCH

NOTE: FAILURE OCCURED BY THE UNLATCHING OF THE PRODUCT. AFTER FAILURE, THE LATCH WAS REUSEABLE.

- ① WORKING LOAD is the maximum force that the product will withstand without affecting the operation or appearance of the product.
- ② Average ULTIMATE LOAD causes failure of the product or sufficient deformation to make the product inoperable.

REF: REV.A 16APR2002 MJS UPDATED LOGO

DRAWING NUMBER
TD-07-1-J

PROPRIETARY ITEM - EXCEPT FOR USES EXPRESSLY GRANTED IN WRITING INFORMATION DISCLOSED HEREON IS CONFIDENTIAL AND ALL RIGHTS PATENT AND OTHERWISE ARE RESERVED BY SOUTHCO, INC.

FORMAT-VR 10/89