

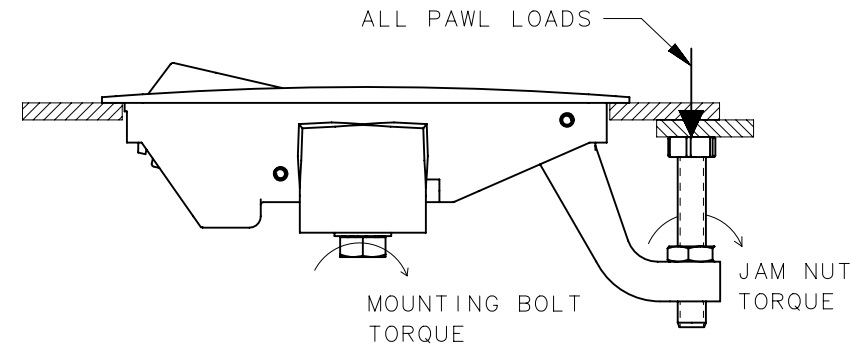
REVISION HISTORY			
REV	DATE	BY	DESCRIPTION
D	25JUL2014	DMS/YGC	PRN: P2014-1482

SOUTHCO PERFORMANCE GUIDELINES

THE PERFORMANCE GUIDELINES SHOWN ON THIS PAGE ARE SUPPLIED AS A GENERAL GUIDE ONLY, AS CONDITIONS VARY WITH EACH APPLICATION AND METHOD OF INSTALLATION. STRENGTH DATA GIVEN IS FOR FAILURE OF THE PRODUCT OR FOR SUFFICIENT DEFORMATION TO MAKE PRODUCT INOPERABLE. NO SAFETY FACTOR HAS BEEN APPLIED IT IS RECOMMENDED THAT THE USER REQUEST A PRODUCT SAMPLE FOR TESTING TO DETERMINE THE SUITABILITY OF THE PRODUCT FOR THE PURPOSE INTENDED AND USER'S PARTICULAR APPLICATION.

PART NUMBER	RECOMMENDED PAWL LOAD (FOR ACTUATION)	MAXIMUM RECOMMENDED PAWL LOAD (IN CLOSED POSITION)	ULTIMATE PAWL LOAD	MAXIMUM MOUNTING BOLT TORQUE	MAXIMUM JAM NUT TORQUE	SALT SPRAY
C2-3X-XX	① 200 N (45 lbf)	② 1100 N (250 lbf)	③ 2000 N (450 lbf)	④ 4.5 N.m (40 lbf.in)	⑤ 7.3 N.m (65 lbf.in)	◎ 312 HOURS, BLACK CORROSION FOUND ON ADJUSTMENT SCREWS AND BRACKETS. ◎ 500 HOURS, FINISH STILL INTACT WITH NO LOSS OF FUNCTION
C2-99-217-1XX						

- ① **RECOMMENDED PAWL LOAD (FOR ACTUATION)** IS THE MAXIMUM FORCE APPLIED TO THE PAWL WHICH ALLOWS REASONABLE ACTUATION FORCES FOR THE USER.
- ② **MAXIMUM RECOMMENDED PAWL LOAD (IN CLOSED POSITION)** IS THE MAXIMUM FORCE THAT THE PRODUCT WILL WITHSTAND WITHOUT AFFECTING THE OPERATION OR APPEARANCE OF THE PRODUCT.
- ③ **AVERAGE ULTIMATE PAWL LOAD** CAUSES FAILURE OF THE PRODUCT OR SUFFICIENT DEFORMATION TO MAKE THE PRODUCT INOPERABLE.
- ④ **MAXIMUM MOUNTING BOLT TORQUE** IS THE TORQUE THAT STRIPPED THE HEAD OF THE MOUNTING SCREW.
- ⑤ **MAXIMUM JAM NUT TORQUE** IS THE TORQUE THAT FAILED THE INTERNAL THREADS IN THE PAWL.



REF: trC2-7,8,17,19

	THIRD ANGLE PROJECTION					<h1>southco®</h1> <p>CONNECT • CREATE • INNOVATE</p>			
	MILLIMETERS [IN]								
SURFACE AREA	TOLERANCES UNLESS OTHERWISE NOTED	DESCRIPTION				C2 ADJUSTABLE LEVER LATCH			
VOLUME	ALL DIMENSIONS WITHOUT TOLERANCES ARE FOR REFERENCE ONLY.	SIZE	SYSTEM	DWG NO.					
PROPRIETARY ITEM		A4	NX	TD-C2-2-J					
EXCEPT FOR USES EXPRESSLY GRANTED IN WRITING, INFORMATION DISCLOSED HEREON IS CONFIDENTIAL AND ALL RIGHTS, PATENT AND OTHERWISE, ARE RESERVED BY SOUTHCO, INC.	PER ASME Y14.5M-1994	DRAWN BY	ALC/ACZ	DATE	31JAN1994	SCALE	1:2	SHEET	1 OF 1