

# southco®

PROPRIETARY ITEM - EXCEPT FOR USES EXPRESSLY GRANTED IN WRITING INFORMATION DISCLOSED HEREON IS CONFIDENTIAL AND ALL RIGHTS PATENT AND OTHERWISE ARE RESERVED BY SOUTHCO, INC.

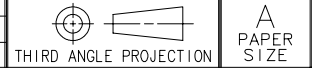
## MAGNETIC CATCH ASSEMBLY

DATE	DRAWN	CHKD	SCALE	DRAWING NUMBER
10-16-75	RHB		2.5:1	J-02-30-321-10

REV	DATE	DRAWN/CHKD	DESCRIPTION	ITEM	PART NUMBER	MATERIAL	FINISH
A	4-6-77	ESK	REV. CONTACT PLANE	ASSEMBLY	02-30-321-10	-	-
B	1-18-82	ESK	PRN:S-1-01	HOUSING		ALUMINUM	NATURAL
C	7-29-86	JSS	PRN:02-52	POLE PIECE (2)		STEEL	ZINC PLATE
D	8-7-90	JAD	PRN:02-63	MAGNET		BARIUM FERRITE	NATURAL
E	5MAR93	JRR	PRN:S-1-03	RIVET		5056 ALUMINUM	NATURAL
F	03SEP2003	RLR/MJS	PRN:P2003-0719	TAPE		URETHANE FOAM	GRAY

**INCHES**

ALL DIMENSIONS WITHOUT TOLERANCES ARE FOR REFERENCE ONLY.



**NOTES:**

- A. INSTALLATION:  
REMOVE PROTECTIVE PAPER AND APPLY ASSEMBLY TO A CLEAN, DRY SURFACE.
- B. MAGNETIC CATCHES IN GENERAL AND ADHESIVE MOUNTING ASSEMBLIES IN PARTICULAR ARE DESIGNED TO FUNCTION UNDER INTERMITTENT BREAK AWAY LOADS. DO NOT SUBJECT ADHESIVE MOUNTING ASSEMBLIES TO A CONTINUOUS LOAD.
- C. DOOR AND FRAME SHOULD HAVE A BUILT-IN STOP TO PREVENT EXCESSIVE LOADING OF THE ADHESIVE DUE TO SLAMMING OF THE DOOR.

