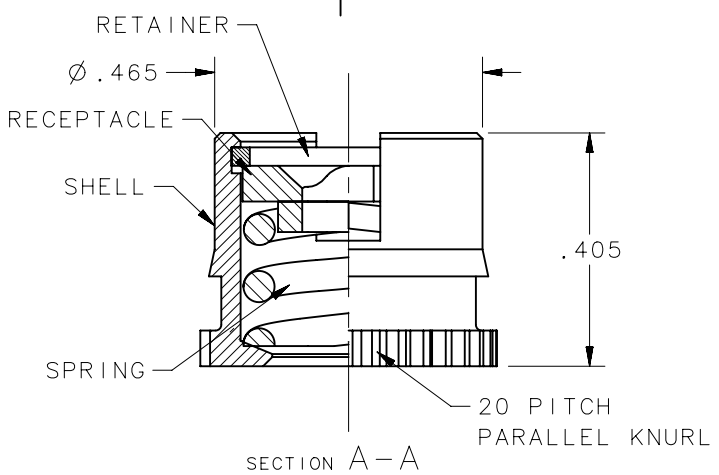
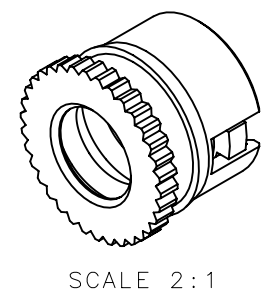
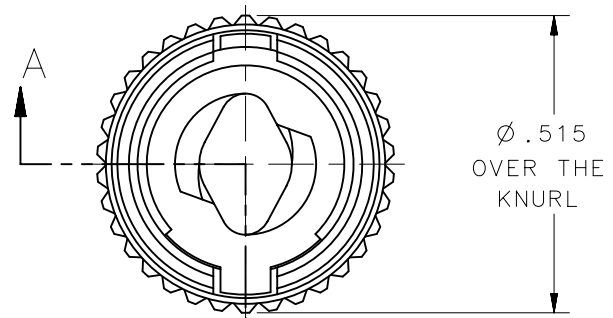
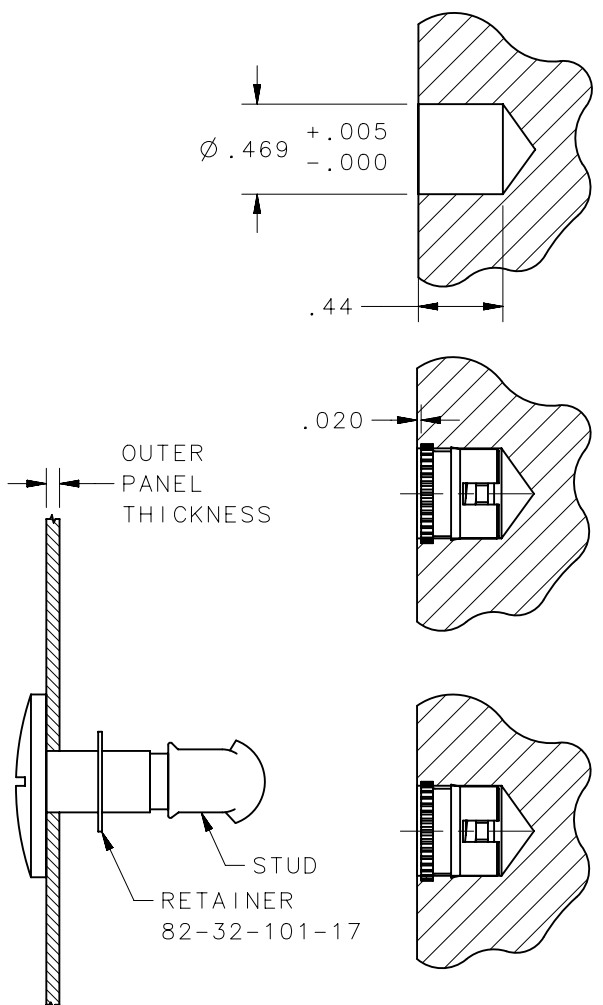


REVISION HISTORY			
REV	DATE	BY	DESCRIPTION
K	13JUL2017	YBS/YGC	PRN: P2017-1696

RECEPTACLE ASSEMBLY



NOTE :

- INSTALLATION INSTRUCTION
 - PREPARE A HOLE IN INNER MEMBER. (OR MOLD A "LUGGED HOLE" PER SOUTHCO DWG. No. N-23726. RECEPTACLE CAN THEN BE INSTALLED SUCH THAT THE STUD SLOT OR WING IS ORIENTED WITH THE RECEPTACLE AS DESIRED)
 - ULTRASONICALLY PRESS THE RECEPTACLE ASSEMBLY IN TO THE DEPTH AS NOTED BELOW THE SURFACE. SLOT MAY BE POSITIONED AS DESIRED; WHEN LOCKED UP, SLOT IN STUD WILL LINE UP WITH SLOT IN RECEPTACLE.

NO.	PART NUMBER	QTY	TYPE OF COMPONENT	MATERIAL	FINISH
4	-	1	SHELL	STEEL	ZINC PLATE, CHROMATE PLUS SEALER
3	-	1	SPRING	STAINLESS STEEL	ZINC FLAKE COATING
2	-	1	RECEPTACLE	CASE HARDENED STEEL	ZINC PLATE, CHROMATE PLUS SEALER
1	-	1	RETAINER	STAINLESS STEEL	PASSIVATED
-	82-35-310-55	-	ASSEMBLY	-	-

THIRD ANGLE PROJECTION		 CONNECT • CREATE • INNOVATE	
INCHES [MM]			
TOLERANCES UNLESS OTHERWISE NOTED		DESCRIPTION	
ALL DIMENSIONS WITHOUT TOLERANCES ARE FOR REFERENCE ONLY		No. 82 RECEPTACLE ASSEMBLY FOR ULTRASONIC INSTALLATION	
PROPRIETARY ITEM <small>EXCEPT FOR USES EXPRESSLY GRANTED IN WRITING, INFORMATION DISCLOSED HEREON IS CONFIDENTIAL AND ALL RIGHTS, PATENT AND OTHERWISE, ARE RESERVED BY SOUTHCO, INC.</small>	PER ASME Y14.5M-1994	SIZE A	SYSTEM NX
		DWG NO. J-82-35-310-55	
		DRAWN BY ACZ	DATE 15FEB1984
		SCALE 1:1	SHEET 1 OF 1