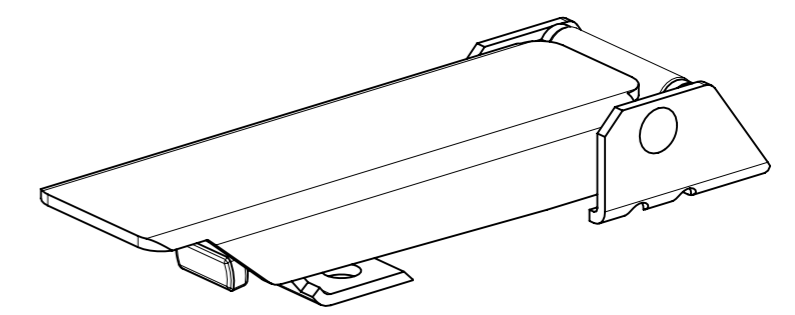
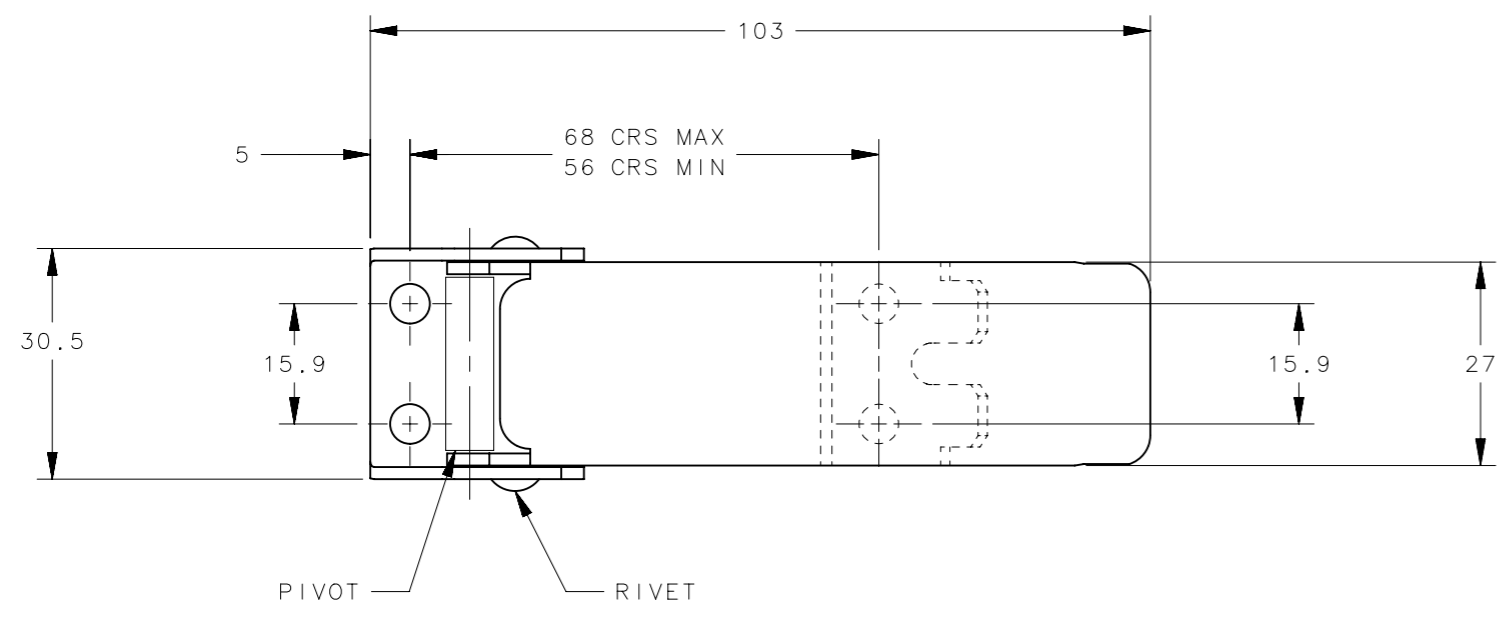
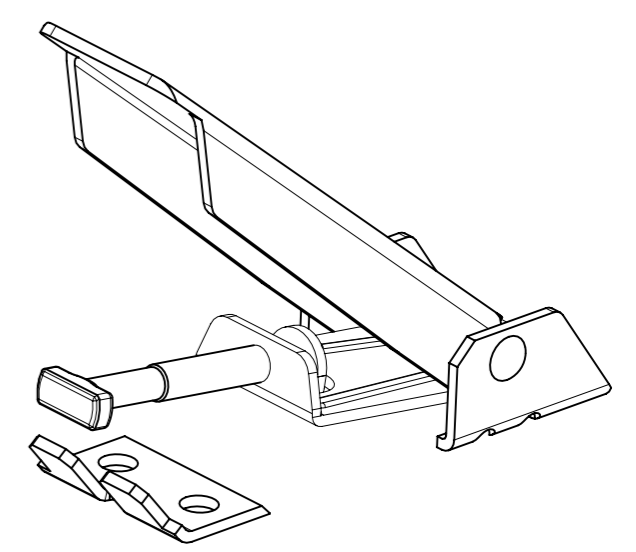
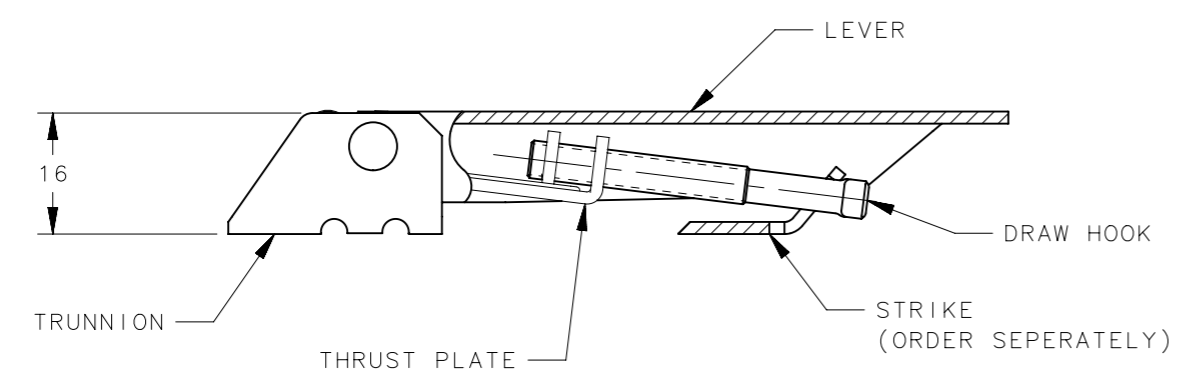


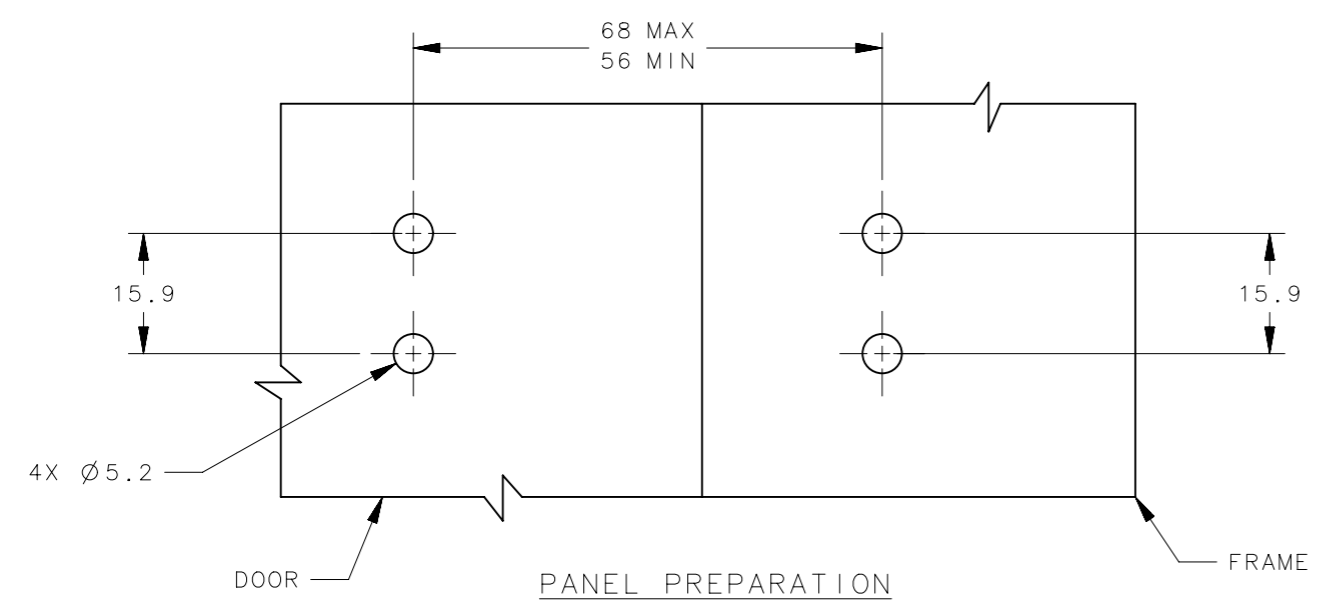
REVISION HISTORY			
REV	DATE	BY	DESCRIPTION
A	22APR2014	JAJ/YGC	PRN: P2014-0793



LATCH IN CLOSED POSITION



LATCH IN OPEN POSITION



NO.	PART NUMBER	QTY	TYPE OF COMPONENT	MATERIAL	GENERAL NOTES
7		1	STRIKER	SEE NOTE 2	SEE NOTE 2
6		1	RIVET	STAINLESS STEEL	-
5		1	PIVOT PIN		-
4		1	DRAW HOOK		
3		1	TRUNNION	SEE NOTE 2	SEE NOTE 2 FOR FINISH
2		1	THRUST PLATE		
1		1	LEVER		
-	91-751-XX	1	LATCH ASSEMBLY	-	

- NOTES:
- FIXING HOLES \varnothing 5.2
 - "XX": PART NUMBER SUFIX FOR MATERIAL & FINISH.
 "00" : STEEL & CLEAN UNPLATED
 "07" : STEEL & S-114-13
 "52" : STAINLESS STEEL & CLEAN

THIRD ANGLE PROJECTION					
TOLERANCES UNLESS OTHERWISE NOTED		DESCRIPTION			
ALL DIMENSIONS WITHOUT TOLERANCES ARE FOR REFERENCE ONLY.		DRAW LATCH TOGGLE LATCH ASSEMBLY			
PROPRIETARY ITEM	PER ASME Y14.5M-1994	SIZE A3	SYSTEM NX	DWG NO. J-91-751-XX	
EXCEPT FOR USES EXPRESSLY GRANTED IN WRITING, INFORMATION DISCLOSED HEREON IS CONFIDENTIAL AND ALL RIGHTS, PATENT AND OTHERWISE, ARE RESERVED BY SOUTHCO, INC.		DRAWN BY JAJ/YGC	DATE 21APR2014	SCALE 1:1	SHEET 1 OF 1